



3M™ Incognito™ Clear Precision Tray

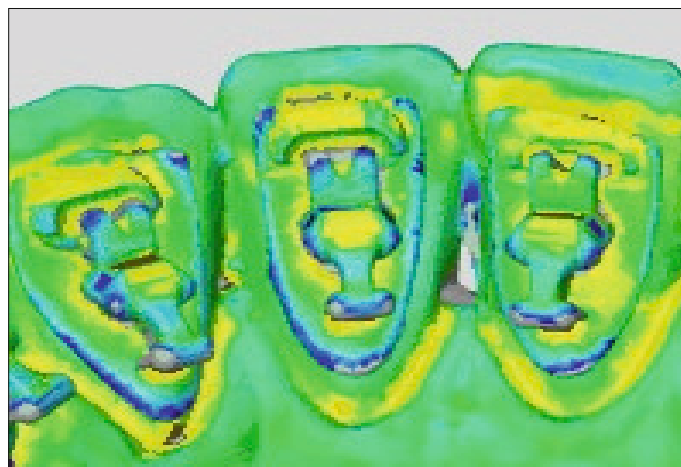
Precision taken to the next level

Successful outcomes begin with a precise 'Start'

The precision of the 3M™ Incognito™ Appliance System relies on the brackets being placed in the correct spot on the tooth. The Incognito System team has developed a proprietary way to build the indirect bonding tray using the same digital data created for designing the brackets. The result is accurate placement of the brackets.

Less deviation from correct bracket position

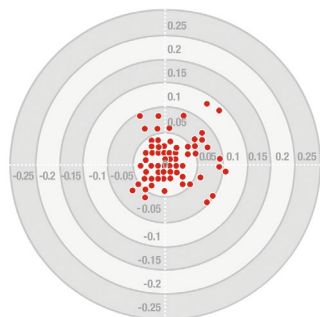
Graphs illustrate the deviations of bracket positioning using the stated method as compared to the design data. The Incognito Clear Precision Tray method is significantly more accurate.



Scan and analysis tools were used to determine deviations of brackets from their target positions.



Conventional Tray Method



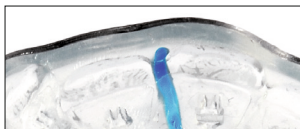
3M Incognito
Clear Precision Tray Method



3M™ Incognito™ Clear Precision Tray

The Incognito Brackets are inserted into the Incognito Clear Precision Tray that is manufactured directly from digital data.

Note: With the new technology, the custom designed bracket surfaces are not covered by any additional resin base, so a filled resin material is recommended for bonding (See RelyX™ Unicem 2 Cement information below).



The Incognito Clear Precision Tray combines a hard outer shell with a soft inlay manufactured directly from digital data.



Rebonding "Jig"
Tray can be cut and used for accurately replacing brackets.



Brackets are inserted into tray.

3M™ RelyX™ Unicem 2 Automix Self-Adhesive Resin Cement

- ▶ Can be used for both bonding and re-bonding of Incognito brackets "Jig"
- ▶ Testers experienced a reduced bond failure rate leading to fewer unplanned visits in your office and a seamless treatment
- ▶ Provides easy handling in a proven automix syringe and is moisture tolerant
- ▶ No need to use metal primer



3M Oral Care
2510 Conway Avenue
St. Paul, MN 55144-1000 USA

Phone: 1-800-423-4588
Web: 3M.com/ortho

TOP-Service für Lingualtechnik GmbH
A 3M Company
Schledehauser Straße 81
49152 Bad Essen
Germany
Tel.: +49 (0)5472 – 94 91 - 0
Fax: +49 (0)5472 – 94 91 - 19

What Doctors Are Saying

- Perfect, sits very well, big step forward.
- It is more precise than previously used silicone tray. It gives the best visibility during the bonding procedure, 100% complete seating in the dentition, easy to remove after bonding procedure.
- It has an excellent fit, it was very easy to use and very easy to handle for the assistants.



Truly Precise and Truly Reliable = True Control

RelyX Unicem 2 Automix Self-Adhesive Resin Cement is a self-adhesive, dual-cure bonding material recommended for achieving the best results with the Incognito Appliance System and the Incognito Clear Precision Tray.



3M, Incognito and RelyX are trademarks of 3M or 3M Deutschland GmbH. Used under license in Canada. For more information please visit www.incognito.net

© 3M 2017.
All rights reserved.
70-2013-0926-0