

3M ESPE Posterior Restorative Procedure Solution



Takes less time
so you have more time

Simplify your day and reduce chair time with faster, easier posterior restorations.

We all know that the more complicated a procedure is, the greater chance there is for something to go wrong and disrupt your day. You'll be happy to know that 3M ESPE has simplified the posterior restoration procedure.

This simple procedure is based on four of 3M ESPE's innovative restorative technologies. Used together, they can help you improve productivity with speed and simplicity.

Essential to the procedure is Filtek™ Bulk Fill Posterior Restorative. This most recent innovation allows for placements up to 5 mm, so there's no need for layering or additional dispensing devices to slow you down. Filtek Bulk Fill Posterior Restorative was designed to improve productivity by allowing fast and easy posterior restorations.

Efficient and consistent procedure for Class II restorations

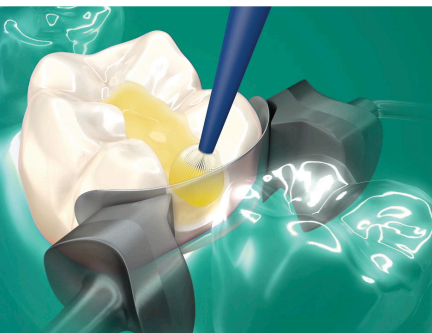
- ☒ **Simple, one-step placement up to 5 mm** with Filtek™ Bulk Fill Posterior Restorative
- ☒ **Virtually no post op sensitivity** with Scotchbond™ Universal Adhesive
- ☒ **High depth of cure** with Elipar™ S10 LED Curing Light
- ☒ **Quickly polish restorations to a high-gloss finish** with Sof-lex™ Spiral Finishing and Polishing Wheels

Fast
and easy

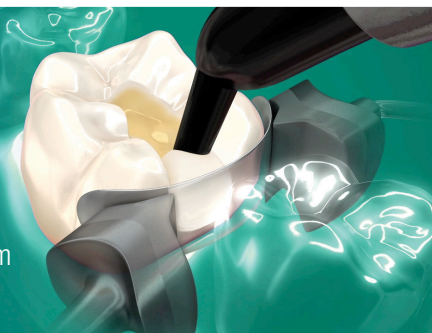
Designed to improve productivity from start to finish.



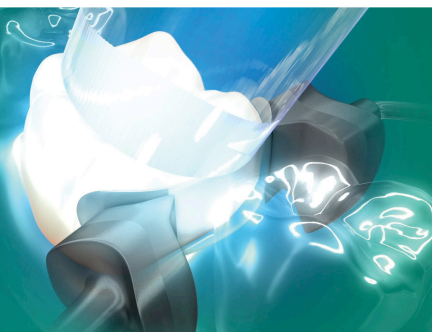
1-step, 1-coat adhesive



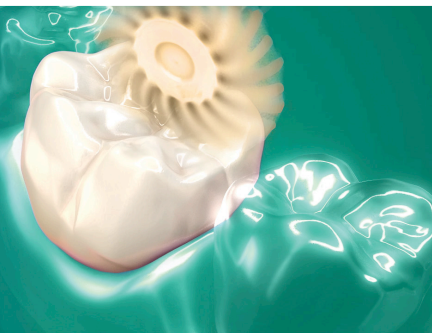
1-step, bulk placement up to 5 mm



1 easy-to-use curing light



1 shape to finish and polish



Scotchbond™ Universal Adhesive

Versatile, high bond strength and virtually no post-operative sensitivity.

Filtek™ Bulk Fill

Posterior Restorative

Simplicity of bulk placement up to 5 mm deep, low wear for durability and stress relief.



Elipar™ S10 LED Curing Light

Faster, deeper cure and a unique ergonomic design.

Sof-Lex™

Spiral Finishing and Polishing Wheels

Easily adapts to irregular, convex and concave tooth surfaces, for fast and easy finishing and polishing.



Ordering Information



Filtek™ Bulk Fill
Posterior Restorative

Filtek™ Bulk Fill Posterior Restorative

Item #	Product Information
4864TK	Filtek™ Bulk Fill Posterior Restorative Capsule Procedure Kit Kit includes: 40 – 0.2g capsules: 20 each of A2 and A3; 5.0ml vial Scotchbond™ Universal Adhesive; Instructions for Use; 10 – Sof-Lex™ Spiral Finishing Wheels; 10 – Sof-Lex™ Spiral Polishing Wheels; 1 – RA Mandrel; Technique Guide; Instructions for Use
4863TK	Filtek™ Bulk Fill Posterior Restorative Syringe Procedure Kit Kit includes: 2 – 4g syringes: 1 each of A2 and A3; 5.0ml vial Scotchbond™ Universal Adhesive; Instructions for Use; 10 – Sof-Lex™ Spiral Finishing Wheels; 10 – Sof-Lex™ Spiral Polishing Wheels; 1 – RA Mandrel; Technique Guide; Instructions for Use

Refill	Item #	Item #
SHADE	SYRINGE	CAPSULE
A1	4863A1	4864A1
A2	4863A2	4864A2
A3	4863A3	4864A3
B1	4863B1	4864B1
C2	4863C2	4864C2

SYRINGE SHADE REFILLS include 1 – 4g syringe; Technique Guide; Instructions for Use.

CAPSULE SHADE REFILLS include 20 – 0.2g capsules; Technique Guide; Instructions for Use.



Scotchbond™ Universal Adhesive

Item #	Product Information
41254	Scotchbond™ Universal Adhesive Intro Kit Kit includes: 1 – 5ml adhesive vial; 50 disposable mixing wells; 50 disposable microbrushes; 1 – 3ml etchant syringe
41258	Scotchbond™ Universal Adhesive Refill: 1 – 5ml adhesive vial
41255	Scotchbond™ Universal Adhesive Intro Kit – Unit Dose 40: Includes 40 unit dose; 1 – 3ml etchant syringe
41256	Scotchbond™ Universal Adhesive Intro Kit – Unit Dose 100: Includes 100 unit dose; 1 – 3ml etchant syringe
41257	Scotchbond™ Universal Adhesive Intro Kit – Unit Dose 200: Includes 200 unit dose; 1 – 3ml etchant syringe
41263	Scotchbond™ Universal Etchant Etching Gel: 2 – 3ml etchant syringes; 50 dispensing tips
41264	Scotchbond™ Universal DCA Dual Cure Activator: 1 – 5ml vial



Elipar™ S10 LED Curing Light

Item #	Product Information
76952	Elipar™ S10 LED Curing Light Kit Includes: 1 Elipar™ S10 LED Curing Light (Cordless) Handpiece; Charging Base (120V); Li-ion Battery; 10mm Light Guide; Eye Shield
76958	Elipar™ S10 Light Guide, 10mm
76967	Elipar™ S10 Light Guide, 8mm
76959	Elipar™ S10 Light Guide, 3mm
76957	Elipar™ S10 Eye Shield
76956	Elipar™ S10 Rechargeable Battery



Sof-Lex™ Spiral Finishing and Polishing Wheels

Item #	Product Information
5082I	Sof-Lex™ Spiral Wheels—Intro Kit Kit includes: 10 Sof-Lex Spiral Finishing Wheels (beige); 10 Sof-Lex Spiral Polishing Wheels (white); 1 RA Mandrel
5080	Sof-Lex™ Spiral Finishing Wheels—Refill: Includes 30 Sof-Lex Spiral Finishing Wheels (beige)
5081	Sof-Lex™ Spiral Polishing Wheels—Refill: Includes 30 Sof-Lex Spiral Polishing Wheels (white)
5082SK	Sof-Lex™ Spiral Wheels, Discs & Strips—System Kit Kit includes: 10 Sof-Lex Spiral Finishing Wheels (beige); 10 Sof-Lex Spiral Polishing Wheels (white); Sof-Lex™ Extra-Thin Polishing Discs 12.7mm: 30 each of 2382C (Coarse), 2382M (Medium), 2382F (Fine), 2382SF (Superfine); Sof-Lex™ Extra-Thin Polishing Discs 9.5mm: 30 each of 2381C (Coarse), 2381M (Medium), 2381F (Fine), 2381SF (Superfine); Sof-Lex™ Finishing Strips: 15 of 1954C/M (Coarse/Medium); 1 RA Mandrel

Customer Care Center: 1-800-634-2249 www.3MESPE.com/Filtek

★★★★★ Review these products at www.3MESPE.com/review

3M ESPE

Dental Products

2510 Conway Avenue
St. Paul, MN 55144-1000 USA
1-800-634-2249

3M Canada

Post Office Box 5757
London, Ontario N6A 4T1
Canada
1-888-363-3685

Please recycle. Printed in U.S.A.
70-2013-0642-3

3M, ESPE, Elipar, Filtek, Scotchbond and Sof-Lex are trademarks of 3M or 3M Deutschland GmbH. Used under license in Canada. © 3M 2014. All rights reserved.