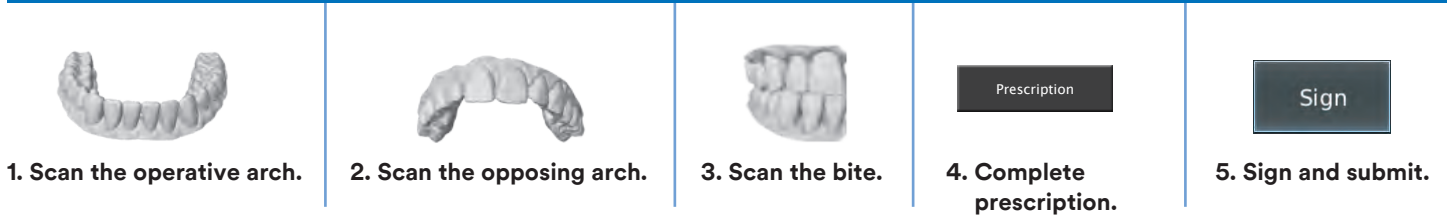


# 3M™ True Definition Scanner

## Quick Start Guide for Straumann® CARES® Workflow

### Steps to Complete a Case



### Scan Path

#### Lightly Dust the Teeth and Scanbody with the 3M High Resolution Scan Spray

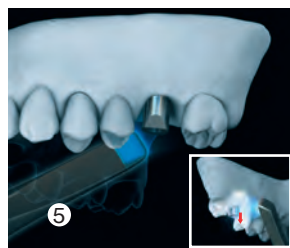
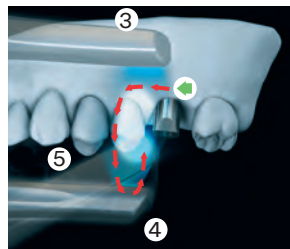
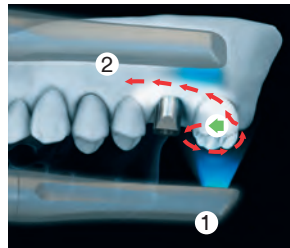
Begin the scan on the occlusal of the adjacent teeth ①. Rotate to the buccal ② and scan the gingiva, capturing part of the Straumann® CARES® Mono Scanbody.

#### Scan the Base of the Mono Scanbody

Continue capture of the gingiva ③ and as much as possible of the interproximal contacts on the adjacent teeth before rotating over the occlusal ④ to the lingual ⑤.

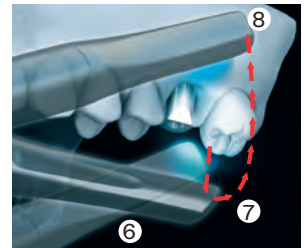
#### Rotate to Lingual

Capture the lingual base of the Scanbody ⑤. Begin to capture the Scanbody from the lingual.



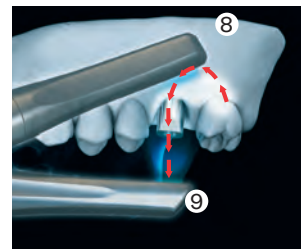
#### Lingual Mono Scanbody

Once the lingual of the Scanbody has been captured, ⑥ rotate over the occlusal of the Scanbody and adjacent tooth, ⑦ toward the buccal ⑧.



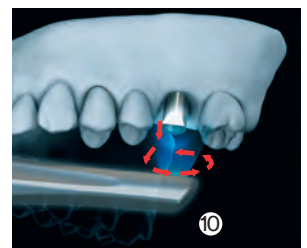
#### Buccal Mono Scanbody

Scan along the buccal gingiva, ⑧ overlapping with the existing scan data. Ascend the buccal of the Scanbody, ⑨ capturing the data.



#### Occlusal Surface

A complete scan of the occlusal surface on the Scanbody is required for implant location ⑩.



## Scan Criteria

### Quality needs for Straumann®

- Only the one-piece Straumann® CARES® Mono Scanbody is released for this workflow.
- Place the angled surface of the Scanbody toward the buccal. Check proper fit of the Scanbody in the dental implant and hand-tighten the self-retaining screw (maximum 15 Ncm).
- The Scanbody should not contact the adjacent teeth when screwed in place.
- The occlusal scan of the Scanbody should have no data holes.
- At least half of the Scanbody should be above the gingiva. At least 80% of the surface must be captured.
- Interproximal areas need to be captured.
- A quadrant scan is sufficient for simple implant cases (cases limited to a quadrant).
- If the Scanbody interferes with a correct centric bite, remove the Scanbody, then scan the bite. Capture of the tissue in the implant area is critical for a successful bite scan.



## Lab Prescription Form

Touch the prescription screen to access the appropriate selection box.

To fill out an electronic prescriptions:

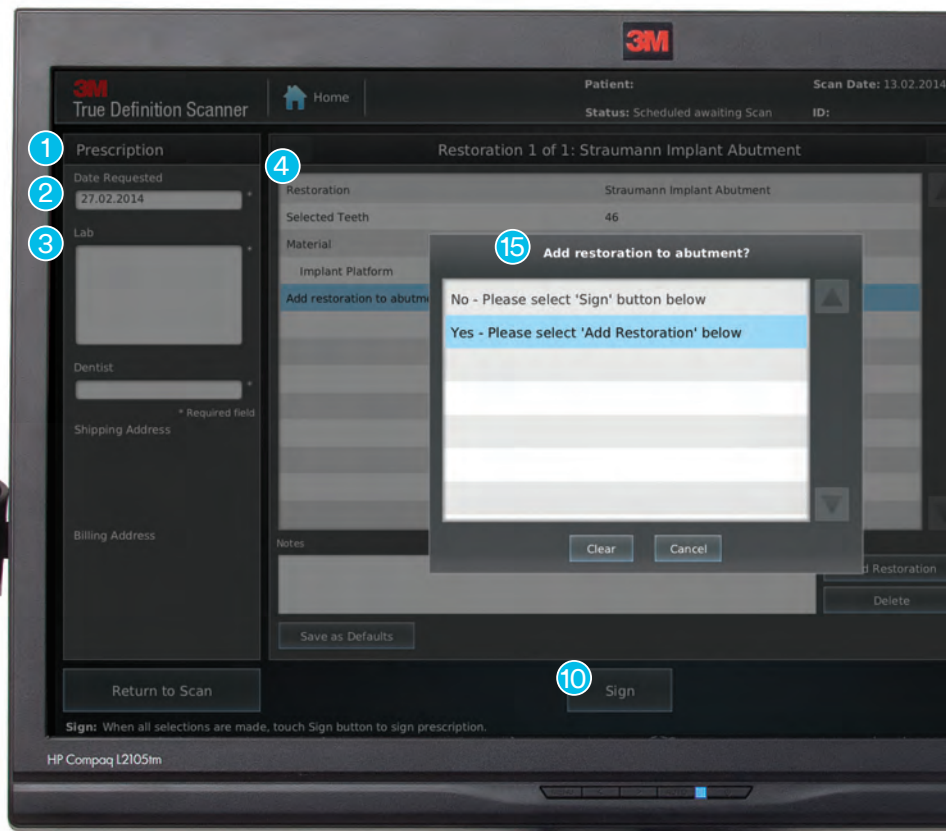
1. Select the **“Prescription” (Rx)** tab.
2. Select the **“Date Requested”** field.
3. Select Lab: **“CARES® Lab”**.
4. Select **“Restoration”**

### Tooth-borne restorations:

5. Choose **“Restoration”** (Crown or Bridge).
6. Select **“Tooth Position”**.
7. Select **“Material”**.
8. Choose **“Other Brand”** to view Straumann materials.
9. Complete prescription including Shade Guide and Color.
10. Sign when complete.

### Implant-borne restorations:

11. Choose **“Straumann® Implant Abutment”**.
12. Select **“Tooth Position”**.
13. Select **“Material”** (Straumann® CARES® Titanium or Straumann® CARES® ZrO<sub>2</sub>).
14. Select **“Implant Platform”** (WN, RN, RC or NC).
15. Add restoration to abutment?
  - If **No**: then sign
  - If **Yes**: then select **“Add Restoration”**
16. Follow steps 5-10 above.



## 3M and Straumann Customer Support



### 3M™ True Definition Scanner

Hardware  
Software

Wireless Connection  
Scan Data/Case Upload  
Scan Protocol

3M True Definition Scanner,  
3M Connection Center and  
3M Software Questions  
**1-800-634-2249, Option 3**



### Straumann® Cares®

CARES® Visual  
Including Virtual Model Builder  
CARES® Products from  
Straumann Production

Straumann Customer Support  
**1-800-448-8168**  
info.usa@straumann.com  
www.straumann.us

**Customer Care Center: 1-800-634-2249**  
**www.3M.com/TrueDef** for more information



3M Oral Care  
2510 Conway Avenue  
St. Paul, MN 55144-1000 USA  
  
Phone 1-800-634-2249  
Web [www.3M.com/TrueDef](http://www.3M.com/TrueDef)

3M Canada  
Post Office Box 5757  
London, Ontario N6A 4T1  
Canada  
1-888-363-3685



**Straumann USA LLC**  
60 Minuteman Road  
Andover, MA 01810  
USA

3M is a trademark of 3M or 3M Deutschland GmbH.  
Used under license in Canada. Please recycle. Printed in U.S.A.

Straumann® and/or other trademarks and logos from Straumann® that are mentioned herein are the trademarks or registered trademarks of Straumann Holding AG and/or its affiliates. All rights reserved. CARES® is a registered trademark of Straumann Holding AG.

© 3M 2015. All rights reserved. 70-2013-0619-1 (Rev. 8/2015)