



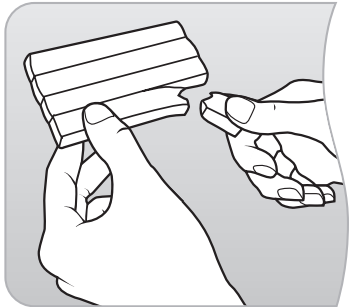
Scotchbrand.com/Mounting

# Removable Mounting Putty

- Apply pressure and it sticks
- Mount artwork, photos, papers and other lightweight items
- Works on most porous and non-porous surfaces\* including cinder block



Use instead  
of push pins



### Preparing:

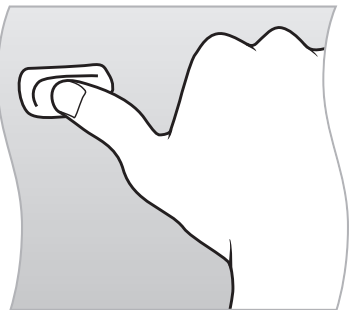
The surfaces must be dry and clean. As needed, knead one or several pieces of putty, approximately 1/2" x 3/4", until soft.

### Applying:

Adhere the putty to the item to be mounted.

### Mounting:

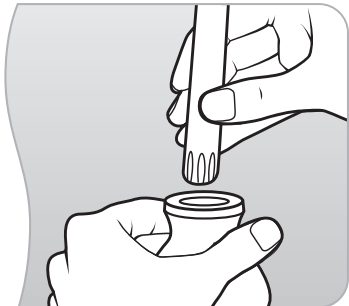
Press the item firmly onto the mounting surface, such as a wall or a container.



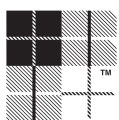
**Removal:** Remove the putty carefully by peeling it from the surfaces. Remove putty residue by dabbing the surface with a piece of putty.

**Storage:** Keep putty in blister or an airtight bag. Conforms to ASTM D-4236. Additional Product Safety and Health Information Source: Material Safety Data Sheet (18-4680-7)

\*Not recommended for use on wallpaper, delicate surfaces or walls painted with flat paint. May stain certain surfaces.



For questions, ideas and special offers go to  
[Scotchbrand.com/Mounting](http://Scotchbrand.com/Mounting)



## Scotch® Brand Tapes

Great ideas that stick