

**3M** Science.  
Applied to Life.™

**3M™ RelyX™ Luting Plus**  
Resin Modified Glass Ionomer Cement

---

**Everyday  
easy.**





# Fast and easy to use—start to finish.



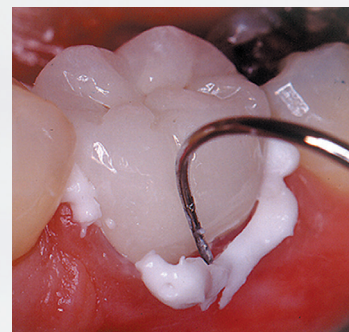
3M™ RelyX™ Luting Plus Cement,  
Clicker™ Dispenser

3M™ RelyX™ Luting Plus Cement,  
Automix Syringe

Convenient, versatile and easy to use RelyX Luting Plus cement eliminates hand-mixing while offering better bond strength than conventional glass ionomer luting cements. This formula offers:

- 5-second tack light cure feature for “clean-up on demand”
- Easy to use automix delivery
- Sustained fluoride release for caries-prone patients
- A good choice for pediatric restorations
- Higher bond strength than conventional glass ionomer
- Virtually no post-op sensitivity

## Easy clean-up



RelyX Luting Plus cement offers a 5-second tack light cure option for faster clean-up.

# Excellent for permanent cementation of PFM and pediatric crowns

RelyX Luting Plus cement delivers proven bond strength for a wide range of indications, including:

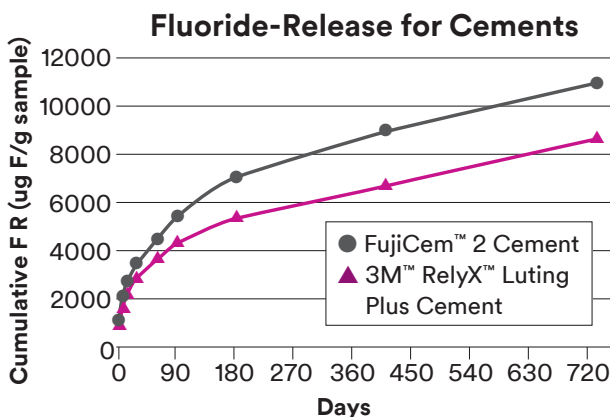
- Porcelain-fused-to-metal (PFM) crowns and bridges
- Metal crowns, inlays and onlays
- All-alumina or all zirconia restorations (such as 3M™ Lava™ Esthetic Fluorescent Full Contour Zirconia, 3M™ Chairsides Zirconia, or Procera® AllCeram)
- Orthodontic bands and appliances
- Final cementation of PFMs, metal crowns and all-alumina or all-zirconia strengthened core ceramic restorations to implant abutments



In a 6-year clinical recall by Dental Advisor, **RelyX Luting Plus Cement** received a 5 star rating with 98% recall rate in all three categories: retention, esthetic and resistance to marginal disconsolation.



## Comparable sustained fluoride

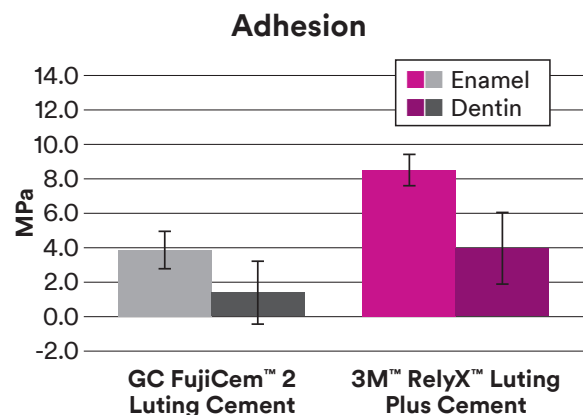


Source: Fluoride Release and Dentin Caries Inhibition Adjacent to Resin-Modified Glass-Ionomer Luting Cements, Tantbirojn et al., Chin Dent J, Vol 24, No 3, 127, 2005



## Adhesion

Ease of use, tack light cure for easy clean up and excess removal.



Source: Effect of Thermal Cycling on Adhesion of Resin-Modified Glass-Ionomer Cements, Wang et al., J Dent Res, Vol 90A, 3196, 2011

# Ordering information

ITEM NO.	PRODUCT INFORMATION
3535TK	<b>3M™ RelyX™ Luting Plus Automix Cement Trial Kit</b> 1 – 8.5g automix syringe; 12 mixing tips; Technique Guide; Instructions for Use
3525TK	<b>3M™ RelyX™ Luting Plus Cement Clicker™ Dispenser Trial Kit</b> 1 – 11g Clicker™ Dispenser; Technique Guide; Instructions for Use
3535	<b>3M™ RelyX™ Luting Plus Automix Cement Value Pack</b> 3 – 8.5g automix syringes; 36 mixing tips; Technique Guide; Instructions for Use
3525	<b>3M™ RelyX™ Luting Plus Cement Clicker™ Dispenser Refill</b> 2 – 11g Clicker™ Dispensers; Instructions for Use
3540	<b>3M™ RelyX™ Luting Plus Automix Mixing Tips</b> 12 mixing tips



**3M Oral Care**  
2510 Conway Avenue  
St. Paul, MN 55144-1000  
USA  
1-800-634-2249

**3M Canada**  
Post Office Box 5757  
London, Ontario N6A 4T1  
Canada  
1-888-363-3685

**3M.com/DentalCements**

3M, Clicker, Lava and RelyX are trademarks of 3M Company or 3M Deutschland GmbH. Used under license in Canada. All other trademarks are owned by their respective owners. Please recycle.  
© 3M 2019. All rights reserved. (Rev. 10/2019) 70-2013-0573-0