

## System No. C-AJ-5347

August 01, 2013

### ANSI/UL1479 (ASTM E814)

F Ratings – 2 Hr

T Rating – 3/4 Hr

L Rating at Ambient - Less than 1 CFM/sq ft

L Rating at 400 F - Less than 1 CFM/sq ft

### CAN/ULC S115

F Ratings – 2 Hr

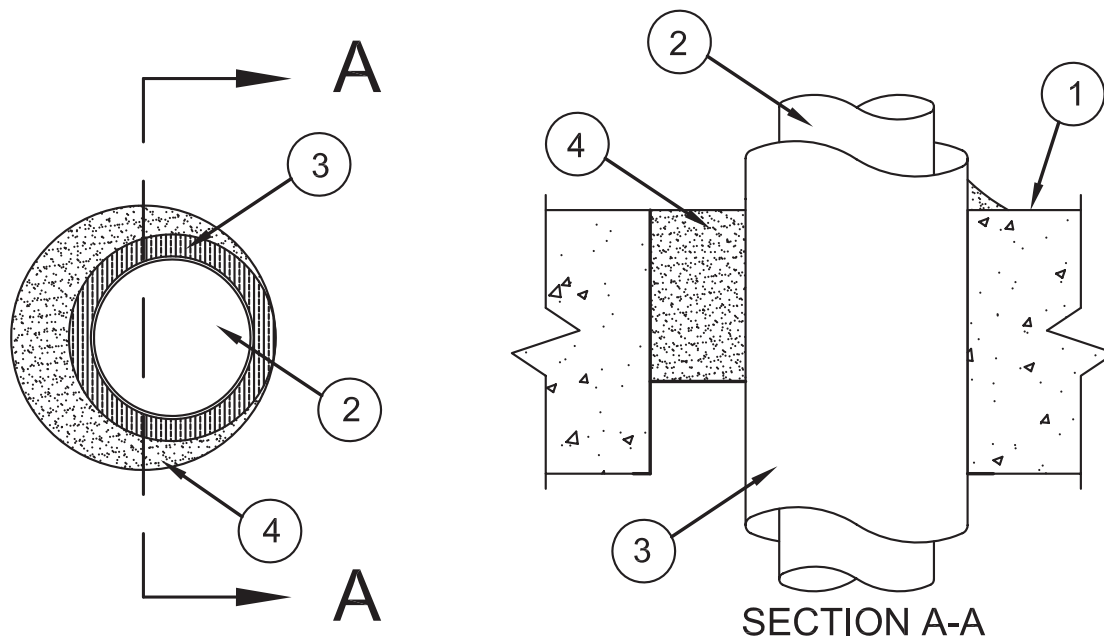
FT Rating – 3/4 Hr

FH Ratings – 2 Hr

FTH Rating – 3/4 Hr

L Rating at Ambient - Less than 1 CFM/sq ft

L Rating at 400 F - Less than 1 CFM/sq ft



- Floor or Wall Assembly** – Min 2-1/2 in. (64 mm) thick lightweight or normal weight (100-150 pcf or 1600-2400 kg/m<sup>3</sup>) concrete. Max diam of opening is 12-1/2 in. (318 mm).
- Through-Penetrant** – One metallic pipe, conduit or tubing installed either concentrically or eccentrically within the firestop system. Pipe, conduit or tubing to be rigidly supported on both sides of floor. The following types and sizes of metallic pipes, conduits or tubing may be used:
  - Steel Pipe** – Nom 8 in. (203 mm) diam (or smaller) Schedule 10 (or heavier) steel pipe.
  - Iron Pipe** – Nom 8 in. (203 mm) diam (or smaller) service weight (or heavier) cast iron soil pipe, nom 12 in. diam (or smaller) or Class 50 (or heavier) ductile iron pressure pipe.
  - Conduit** – Nom 6 in. (152 mm) diam (or smaller) steel conduit or nom 4 in. (102 mm) diam (or smaller) steel electrical metallic tubing.
  - Copper Tubing** – Nom 4 in. (102 mm) diam (or smaller) Type L (or heavier) copper tubing.
  - Copper Pipe** – Nom 4 in. (102 mm) diam (or smaller) Regular (or heavier) copper pipe.
- Pipe and Equipment Covering Materials\*** – Nom 1 in. (25 mm) thick hollow cylindrical heavy density (nom 3.5 pcf or 56 kg/m<sup>3</sup>) glass fiber units jacketed on the outside with an all service jacket. Longitudinal joints sealed with metal fasteners or factory-applied self-sealing lap tape. Transverse joints secured with metal fasteners or butt tape supplied with the product. Annular space between the insulated through penetrant and periphery of opening shall be min 0 in. (point contact) to max 1-7/8 in. (48 mm).

See **Pipe and Equipment Covering Materials** (BRGU) category in the Building Materials Directory for names of manufacturers. Any pipe covering material meeting the above specifications and bearing the UL Classification Marking with a Flame Spread Index of 25 or less and a Smoke Developed Index of 50 or less may be used.
- Fill, Void or Cavity Material\*** – **Foam** – Min 2-1/2 in. (64 mm) thickness of fill material applied within the annulus, flush with top surface of floor or both surfaces of wall.

**3M COMPANY** – Fire Barrier Rated Foam, FIP 1-Step

\*Bearing the UL Classification Mark

Reprinted from the Online Certifications Directory with permission from UL  
© 2013 UL LLC

