

System No. C-AJ-4098

August 01, 2013

ANSI/UL1479 (ASTM E814)

F Ratings – 2 Hr

T Rating – 1/4 Hr

L Rating at Ambient - Less than 1 CFM/sq ft

L Rating at 400 F - Less than 1 CFM/sq ft

CAN/ULC S115

F Ratings – 2 Hr

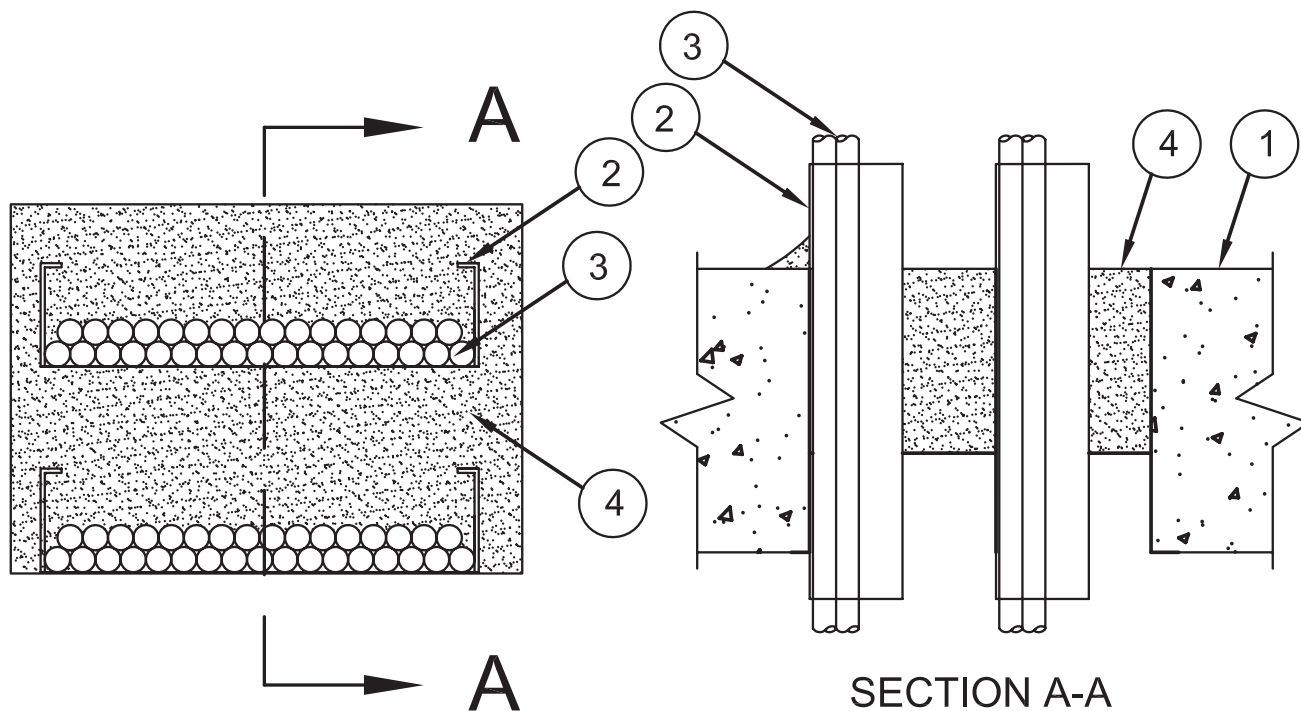
FT Rating – 1/4 Hr

FH Ratings – 2 Hr

FTH Rating – 1/4 Hr

L Rating at Ambient - Less than 1 CFM/sq ft

L Rating at 400 F - Less than 1 CFM/sq ft



- Floor or Wall Assembly** – Min 2-1/2 in. (64 mm) thick lightweight or normal weight (100-150 pcf or 1600-2400 kg/m³) concrete. The area of the opening shall be max 512 in.2 (3303 cm²) with a max dimension of 32 in. (813 mm).
- Cable Tray*** – Max two 24 in. (610 mm) wide by max 6 in. (151 mm) deep open-ladder cable tray with channel-shaped side rails formed of 0.065 in. (1.651 mm) to 0.10 in. (2.54 mm) thick aluminum or min 0.060 in. (1.65 mm) thick galv steel. The annular space between the cable trays shall be min 2 in. (51 mm). The annular space between the cable tray and the periphery of the opening shall be min 0 in. (point contact) to max 2 in. (51 mm). Cable tray to be rigidly supported on both sides of floor or wall assembly.
- Cables** – Aggregate cross-sectional area of cables in cable tray to be max 45 percent of the cross-sectional area of the cable tray based on a max 5 in. (127 mm) cable loading depth within the cable tray. Any combination of the following types and sizes of copper conductor or fiber optic cables may be used:
 - Max 7/C No. 12 AWG with polyvinyl chloride (PVC) insulation and PVC jacket.
 - Max 300 pair - No. 24 AWG cable with PVC insulation and jacket.
 - 1/C, max 500 kcmil with cross-linked polyethylene (XLPE) insulation and jacket.
- Fill, Void or Cavity Material* – Foam** – Min 2-1/2 in. (64 mm) thickness of fill material applied within the annulus, flush with top surface of floor or both surfaces of wall. Foam to be injected into the interstices between all cables. An additional 1/2 in. (13 mm) bead of foam shall be applied at the point contact locations.

3M COMPANY – Fire Barrier Rated Foam, FIP 1-Step

*Bearing the UL Classification Mark

Reprinted from the Online Certifications Directory with permission from UL

© 2012 UL LLC

