

**System No. C-AJ-0140**

August 01, 2013

**ANSI/UL1479 (ASTM E814)**

F Ratings – 2 Hr

T Rating – 3/4 Hr

L Rating at Ambient - Less than 1 CFM/sq ft

L Rating at 400 F - Less than 1 CFM/sq ft

**CAN/ULC S115**

F Ratings – 2 Hr

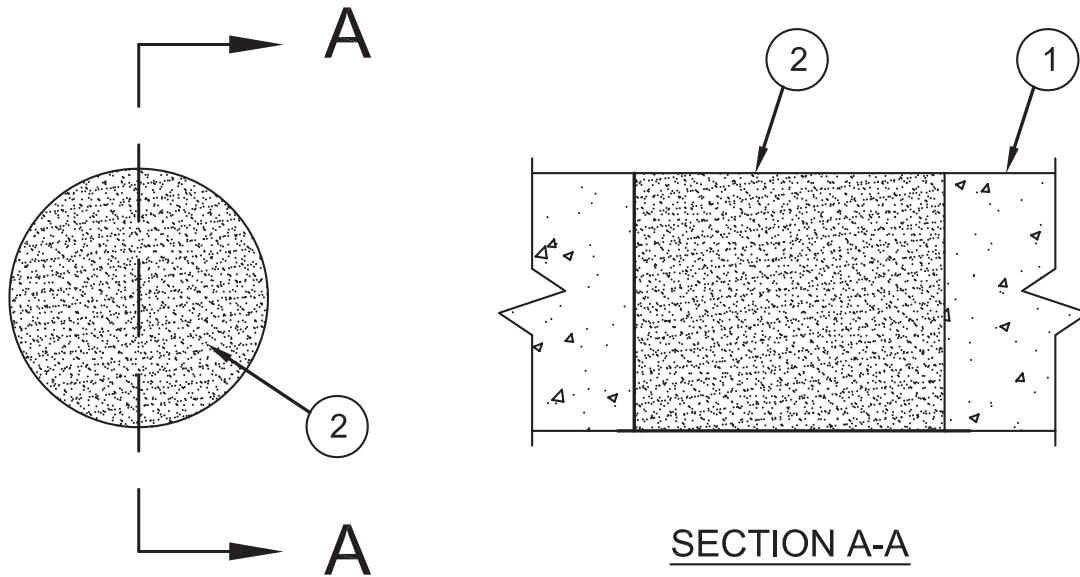
FT Rating – 3/4 Hr

FH Ratings – 2 Hr

FTH Rating – 3/4 Hr

L Rating at Ambient - Less than 1 CFM/sq ft

L Rating at 400 F - Less than 1 CFM/sq ft



1. **Floor or Wall Assembly** – Min 2-1/2 in. (64 mm) thick lightweight or normal weight (100-150 pcf or 1600-2400 kg/m<sup>3</sup>) concrete. Max diam of opening is 8 in. (203 mm).
2. **Fill, Void or Cavity Material\* – Foam** – Min 2-1/2 in. (64 mm) thickness of fill material applied within the annulus, flush with top surface of floor or both surfaces of wall.

**3M COMPANY** – Fire Barrier Rated Foam, FIP 1-Step

\*Bearing the UL Classification Mark

Reprinted from the Online Certifications Directory with permission from UL  
© 2013 UL LLC

