

# LifeASSURE™ EMC Series Filter Cartridges

LifeASSURE™ EMC filter cartridges are high efficiency naturally hydrophilic Nylon 6,6 filter elements designed to meet the exacting requirements of DI water, critical parts cleaning, and chemical applications. Utilizing FlexN Multi-Zone Membrane and Advanced Pleat Technology (APT), LifeASSURE EMC filter cartridges provide superior flow characteristics with minimal pressure drop. Increasing flow while maintaining filter efficiency results in particle specifications being achieved in less time. This decrease in processing time results in lower total filtration costs — reduced energy consumption, pump wear, and labor.

The naturally hydrophilic Nylon 6,6 membrane in an all virgin construction, provides low extractables, increased filter life, and superior contaminant reduction as compared to other membrane cartridges. LifeASSURE EMC filter cartridges are ideally suited for DI water, critical parts cleaning, photoresists, and other UHP chemical applications where superior downstream cleanliness and high efficiency contaminant reduction at 0.1 µm, 0.2 µm, 0.45 µm, 0.65 µm and 0.80 µm is required.



## Features & Benefits

---

### Multi-Zone Naturally Hydrophilic Nylon 6,6 Membrane

- No IPA pre-wetting and system flushing required — eliminates a potential source of contamination and chemical interaction, while reducing downtime and hazardous waste disposal
- Reduces potential for microbubble formation by not dewetting in outgassing fluid unlike hydrophobic membranes such as Polypropylene, Polyethylene, and PTFE
- Enhanced contaminant reduction capacity results in longer lifetime than competitive filter cartridges
- Economic alternative to PTFE filter cartridges

---

### Advanced Pleat Technology

- Superior flow characteristics in a compact design reduces the number of required filter elements
- Increased flow rates provide faster bath clean-up and reduced energy consumption
- Provides a low differential pressure to minimize micro-bubble formation
- Increased throughput and filter lifetime which lowers cost-of-ownership

---

### Low Cartridge Extractables

- Excellent downstream cleanliness out of the package unlike other filter materials which can extract ionic, organic, and metallic contaminants

### FlexN Multi-Zone Membrane Technology

LifeASSURE EMC filter cartridges incorporate 3M Purification’s FlexN Multi-Zone membrane technology to maximize contaminant holding capacity while maintaining particle reduction efficiency. FlexN membrane creates a multi-zone membrane that consists of a higher porosity (more open) zone on the up stream section and a lower porosity (tighter) section on the down stream side. The higher porosity zone on the up stream side provides effective pre-filtration of large particles resulting in higher contaminant reduction capacity and increased filter life time. The lower porosity zone on the down stream section provides a sharp retention cut-off at the rated pore size. As shown in SEM micrograph (Figure 1) the multi-zone structure enhances the surface area, lowers pressure drop, and increases contaminant holding capacity and filter lifetime thereby eliminating the need for more costly filters constructed with a double layer of membrane.

Normally a small amount of gel particles can be found in DI water and chemicals. Their reduction from these fluids is highly dependent on differential pressure across the filtration system. Since these gels are deformable, they can extrude through a filter at high differential pressures. At low differential pressures, the forces that would deform gels are correspondingly lower and the gels are retained by the membrane media. 3M Purification has been able to maximize filtration surface area, which assures a low differential pressure, making it ideal for gel reduction. The increase infiltration surface area is achieved by using the Advanced Pleat Technology.

The service life of a pleated filter cartridge is often dictated by the accessible surface area. Conventional pleated filters may offer a large gross surface area, but when the media is packed into the cartridge, only part of the surface area is used resulting in both flow restrictions and limited contaminant holding capacity. The “blind” or unused area commonly occurs

Figure 1. SEM Showing the Multi-Zone Structure

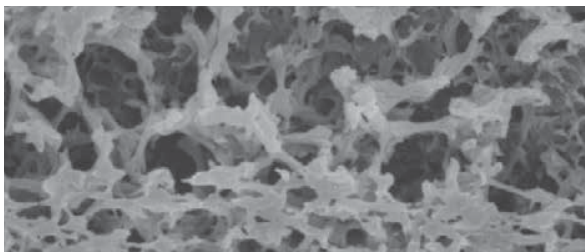


Figure 2. Conventional Pleating

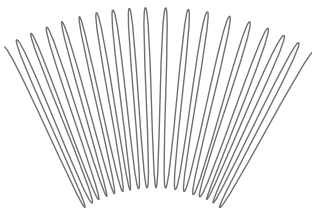
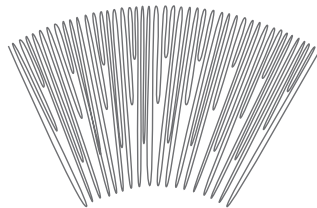


Figure 3. Advanced Pleat Technology

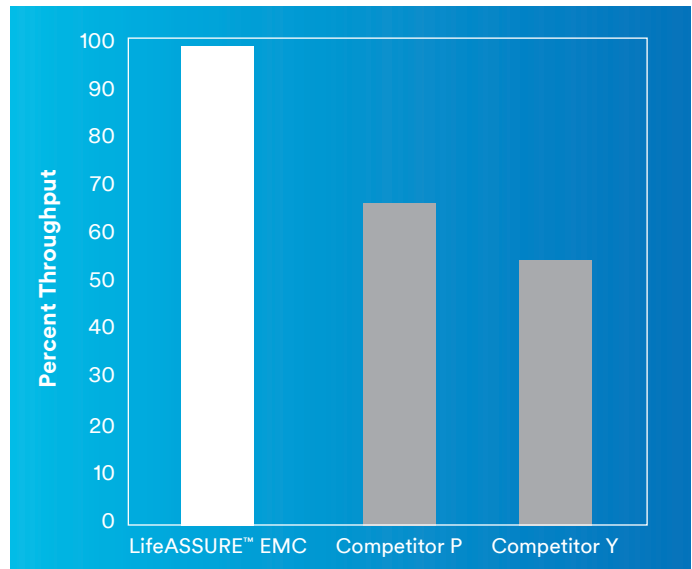


near the inside diameter (Figure 2) where the pleats are most tightly compressed. The LifeASSURE™ EMC filter cartridge is manufactured using a staggered and stepped configuration (Figure 3) which reduces the open space between the outside pleats. This novel technology maximizes capacity by increasing the open area which allows for greater particle loading at the inside diameter, while the shorter stepped pleats take advantage of existing open space closer to the outside diameter of the cartridge. The result is a fully used surface area that provides superior filter life.

### Enhanced Filter Lifetime

The data in Chart 1 illustrates the through put advantage of the LifeASSURE EMC filter — indicative of both enhanced service life and greater contaminant holding capacity. When compared to competitive products, the available grades of LifeASSURE EMC allow the users to select equivalent effluent quality with vastly superior life, or, improve the effluent quality with reduced, yet competitively superior, service life. Either way the result is the same — LifeASSURE EMC filters allow significantly more through put than competitive filters and provide as much as twice the service life.

Chart 1. Comparative Throughput



### Benefits of Higher Per-Cartridge Flow Rates

The novel construction of the LifeASSURE EMC results in a higher per cartridge flow rate at the same pressure drop as compared to competitive filters.

Table 1: Comparative Flow Rates (10" 0.2mm Filter Cartridge)

Filter	LifeASSURE™ EMC	Competitor Y	Competitor P
Pressure Drop (25°C Water @ 1 gpm)	0.29 psid (0.020 bar)	0.32 psid (0.022 bar)	0.40 psid (0.028 bar)

**This can reduce filtration costs two ways:**

**Less Frequent Filter Change-outs** — For existing applications at a given flow rate, filter cartridges with more surface area per cartridge have a lower flux (flow per unit surface area) than filters cartridges with less surface area. Since filter life time is inversely proportional to flux (lower flux = longer filter life) in most applications. LifeASSURE EMC filter cartridges provide longer life and require fewer filter cartridge change-outs.

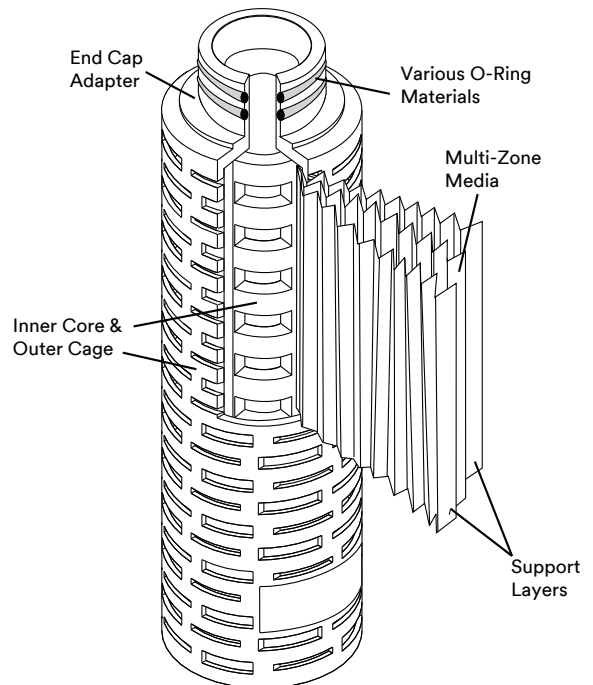
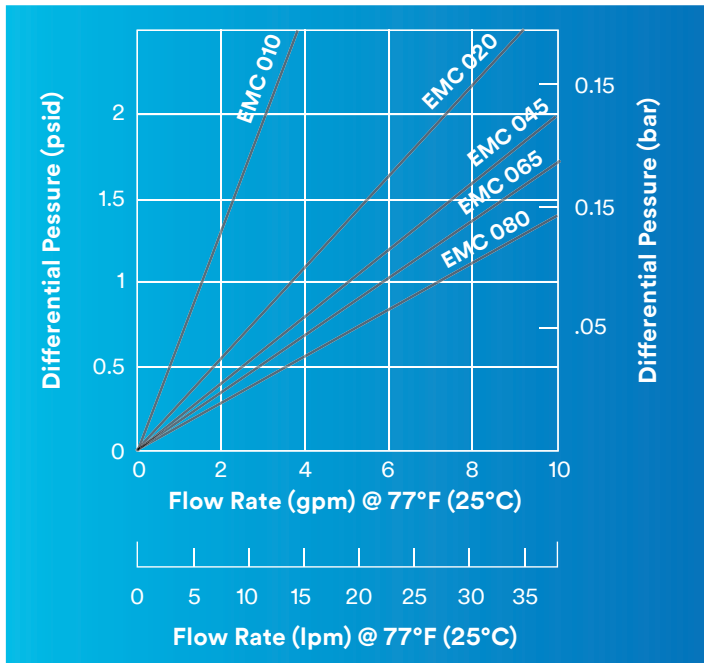
**Reduced Filter Housing Costs** — A filter cartridge that can deliver a higher flow rate at the same pressure drop when compared to competitive products will reduce filtration costs because fewer filters are required for the system. This in turn, allows for the use of smaller and less costly filter housings which reduces initial capital investment, filter change-out time, and

total cost-of-owner ship for the life of the process. Chart 2 provides the typical flow rate vs. pressure drop data for the five grades of LifeASSURE™ EMC (0.1µm, 0.2µm, 0.45µm, 0.65µm, 0.80µm) available.

**LifeASSURE™ EMC Cartridge Construction**

LifeASSURE EMC filter cartridges are constructed of high efficiency, naturally hydrophilic, single layer Nylon 6,6 membrane. The cage, core, end caps, and membrane supports are made of polypropylene. No adhesives, binders, or surfactants are used in the manufacturing process. Cartridges are manufactured and bagged in a clean environment under an ISO certified quality system using advanced thermosplastic welding techniques to ensure filter integrity out of the package.

**Chart 2. 10" Cartridge Typical Water Flow Rates**



Cartridge Component	
Membrane	FlexN Multi-Zone Naturally Hydrophilic Nylon 6,6
Cage, Core, End-Caps, and Media Support Layers	Virgin Polypropylene
Cartridge Dimensions	
Filtration Surface Area	11.0 ft. <sup>2</sup> (1m <sup>2</sup> )
Nominal Outside Diameter	2-3/4 in. (7cm) nominal
Nominal Length	5 in. (12.7cm), 10 in. (25.4cm), 20 in. (50.8cm), 30 in. (76.2cm) and 40 in. (101.6cm)
Operating Parameters	
Maximum Operation Temperature	176°F (80°C) for 30 minutes
Maximum Differential Pressure	Forward: 80 psid @ 77°F (5.5 bar @ 25°C) 35 psid @ 176°F (2.4 bar @ 80°C)
Reduction Ratings	0.1, 0.2, 0.45, 0.65, 0.80 Microns
Filter Cartridge Rinse	18 Megohm-cm DI water
Filter Cartridge Integrity	100% Tested

# LifeASSURE™ EMC Series Filter Cartridge Ordering Guide

Cartridge	Reduction Rating	Configuration	Length	End-modification	Gasket/O-ring Material
EMC	<b>010</b> – 0.1 µm <b>020</b> – 0.2 µm <b>045</b> – 0.45 µm <b>065</b> – 0.65 µm <b>080</b> – 0.80 µm	F	<b>01</b> – 10" <b>02</b> – 20" <b>03</b> – 30" <b>04</b> – 40"	<b>B</b> – 226 O-ring & Spear (Code 7) <b>C</b> – 222 O-ring & Spear (Code 8) <b>D</b> – Double Open End (10" length) <b>E</b> – Double Open End (9-3/4" length) <b>F</b> – 222 O-ring & Flat Cap (Code 3)	<b>A</b> – Silicone <b>B</b> – Fluorocarbon <b>C</b> – EPR <b>K</b> – Encapsulated Fluorocarbon*

\*Available with B, C and F End Modifications only.

**PLEASE NOTE: The Ordering Guide above is for reference only. Not all combinations are available. Please consult with your 3M Representative to determine the appropriate part number for your application.**

**Intended Use and Product Selection:** 3M™ LifeASSURE™ EMC Series Filter cartridges are intended for use in industrial and high purity chemical filtration applications of aqueous fluids in accordance with the applicable product instructions and specifications. 3M LifeASSURE EMC Series Filter cartridges are also intended for use with non-aqueous fluids where materials of construction are compatible. Since there are many factors that can affect a product's use, the customer and user remain responsible for determining whether the 3M product is suitable and appropriate for the user's specific application, including user conducting an appropriate risk assessment and evaluating the 3M product in user's application.

**Restrictions on Use:** 3M advises against the use of these 3M products in any application other than the stated intended use(s), since other applications have not been evaluated by 3M and may result in an unsafe or unintended condition. Do not use in any manner whereby the 3M product, or any extractable or leachable from the 3M product, may become part of or remains in a medical device, drug, cosmetic supplement, infant formula; or in applications involving life-sustaining medical applications or prolonged contact with internal bodily fluids or tissues.

3M™ LifeASSURE™ EMC Series Filter cartridges products are not for use in food contact applications.

**Technical Information:** The technical information, guidance, and other statements contained in this document or otherwise provided by 3M are based upon records, tests, or experience that 3M believes to be reliable, but the accuracy, completeness, and representative nature of such information is not guaranteed. Such information is intended for people with knowledge and technical skills sufficient to assess and apply their own informed judgment to the information. No license under any 3M or third party intellectual property rights is granted or implied with this information.

**Product Selection and Use:** Many factors beyond 3M's control and uniquely within user's knowledge and control can affect the use and performance of a 3M product in a particular application. As a result, customer is solely responsible for evaluating the product and determining whether it is appropriate and suitable for customer's application, including conducting a workplace hazard assessment and reviewing all applicable regulations and standards (e.g., OSHA, ANSI, etc.). Failure to properly evaluate, select, and use a 3M product and appropriate safety products, or to meet all applicable safety regulations, may result in injury, sickness, death, and/or harm to property.

**Warranty, Limited Remedy, and Disclaimer:** Unless a different warranty is specifically stated on the applicable 3M product packaging or product literature (in which case such warranty governs), 3M warrants that each 3M product meets the applicable 3M product specification at the time 3M ships the product. 3M MAKES NO OTHER WARRANTIES OR CONDITIONS, EXPRESS OR IMPLIED, INCLUDING, BUT NOT LIMITED TO, ANY IMPLIED WARRANTY OR CONDITION OF MERCHANTABILITY, FITNESS FOR A PARTICULAR PURPOSE, OR ARISING OUT OF A COURSE OF DEALING, CUSTOM, OR USAGE OF TRADE. If a 3M product does not conform to this warranty, then the sole and exclusive remedy is, at 3M's option, replacement of the 3M product or refund of the purchase price.

**Limitation of Liability:** Except for the limited remedy stated above, and except to the extent prohibited by law, 3M will not be liable for any loss or damage arising from or related to the 3M product, whether direct, indirect, special, incidental, or consequential (including, but not limited to, lost profits or business opportunity), regardless of the legal or equitable theory asserted, including, but not limited to, warranty, contract, negligence, or strict liability.



Your local distributor:

3M Purification Inc.  
 3M Separation and Purification Sciences Division  
 400 Research Parkway  
 Meriden, CT 06450 USA

Phone 1-800-243-6894  
 1-203-237-5541  
 Web 3MPurification.com

3M and LifeASSURE are trademarks of 3M Company.  
 ©2023 3M Company. All rights reserved. Please recycle. Printed in U.S.A.  
 70-0201-8888-7 REV 0423