

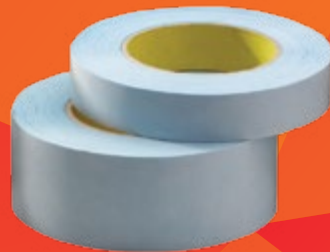
**3M** Science.  
Applied to Life.™

# Reliable to the core.

Advanced tape technology for consistent performance in your mill.

As the papermaking process has changed, so has the need for more advanced adhesive technologies. 3M™ Repulpable Tapes provide a complete line of core starting tapes that are easy to use and stick reliably every time. Featuring an aggressive, high tack adhesive, they allow you to start new rolls quickly and keep your mill running smoothly.

3M™ Repulpable Tapes  
for Core Starting



- High tack adhesive ensures fast, easy and reliable core starting
- Reliable performance in all climates, from cold and dry to hot and humid
- Wide selection of tapes covers all your paper grades

# Start with confidence.

## 3M™ Repulpable Tapes

Choosing the right 3M™ Repulpable Tape for your core starting applications is easy. Match your paper grade and winder in the chart at the right to find the appropriate tape.



	Paper/ Application	Type of Winder	Recommended Tape Product
Paper Weight/Grade	Fluff Pulp/Kraft/ Liner Board/ Unbleached/ Rough Surface	All Winder Types	R3257
	>130 gsm Bleached Coated and Uncoated	Twin Drum/Belt Winder	R3287
		Single Drum	R3187, R3287
	<130 gsm Bleached Coated and Uncoated	Twin Drum/Belt Winder	R3227
		Single Drum	R3127, R3227
Tissue	All Winder Types	R3227	
Special Needs	Automatic Core Taping Equipment	All Winder Types	R3257
	Manual Pretaping Cores	All Winder Types	R3227
	Paper Removes Cleanly from Cores	All Winder Types	R3287SL

## Your full line of 3M™ Repulpable Core Starting Tapes

Product	Color	Tape Thickness mils (mm)	Tape Construction Backing/Adhesive	Compatible Hand-Held Dispensers	FDA Compliant*
<b>Temporary Single-Coated Tapes</b>					
R3127	Blue, White, Kraft	4.5 (0.11)	Paper/Repulpable	H122 (2" widths)	Yes
R3187	Blue, White, Kraft	7.5 (0.19)	Paper/Repulpable	HB903 (2" widths)	Yes
<b>Temporary Double-Coated Tapes</b>					
R3227	Blue, White	3.0 (0.08)	Tissue/Repulpable	RTA500	Yes
R3257	White	5.0 (0.13)	Tissue/Repulpable	RTA500	Yes
R3287	White	5.5 (0.14)	Tissue/Repulpable	S170/S171	Yes
R3287SL	White	5.5 (0.14)	Tissue/Repulpable	S170/S171	Yes

**For more information on 3M's complete line of products for paper manufacturing, contact your 3M sales representative or the 3M Customer Response Center at 800-362-3550.**

*The technical information and data provided should be considered representative or typical only and should not be used for specification purposes.*

Standard roll lengths are 55 meters; longer lengths are available.

Repulpability judged according to TAPPI UM-213, Procedure A.

\*FDA Compliance: All components of the adhesive and backing meet the requirements of indirect food additive regulations as described under CFR 21.176.170 (Components of paper and paperboards in contact with aqueous and fatty food) and 21 CFR 176.180 (Components of paper and paperboards in contact with dry foods).



**Industrial Adhesives and Tapes Division**  
3M Center, Building 225-3S-06  
St. Paul, MN 55144-1000

Phone 1-800-362-3550  
Web 3M.com/IATD

**Warranty and Limited Remedy:** 3M warrants that each 3M product meets the applicable 3M product specification at the time 3M ships the product. 3M MAKES NO OTHER EXPRESS OR IMPLIED WARRANTIES OR CONDITIONS, INCLUDING ANY IMPLIED WARRANTY OR CONDITION OF MERCHANTABILITY OR FITNESS FOR A PARTICULAR PURPOSE. If the 3M product does not conform to this warranty, the sole and exclusive remedy is, at 3M's option, replacement of the 3M product or refund of the purchase price. **Limitation of Liability:** Except where prohibited by law, 3M will not be liable for any loss or damage arising from the 3M product, whether direct, indirect, special, incidental or consequential, regardless of the legal theory asserted.

3M is a trademark of 3M Company.  
Please recycle. Printed in USA.  
© 3M 2016. All rights reserved.  
70-0716-1651-3