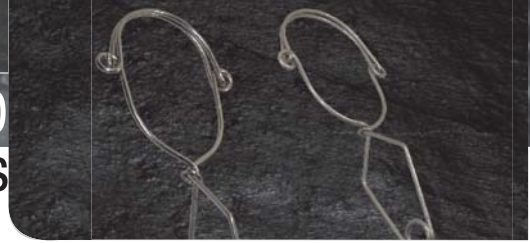


Manuclave Anchor Clamp

User Instructions



General Safety Information

These *User Instructions* are not to be removed except by the user of this equipment. *User Instructions* must always be available to the user.

WARNING

Compliant fall protection and emergency rescue systems help prevent serious injury during fall arrest. Users must read and understand the *User Instructions* provided with the product and be properly trained by their employer prior to use per OSHA 29 CFR 1910.66 and 1926.503 or applicable local standards. **Misuse or failure to follow warnings and instructions may result in serious personal injury or death.** For proper use, see supervisor, *User Instructions*, or call Technical Service at 1-800-560-1094.

Purpose

The 3M Manuclave Anchor Clamps are designed to be used as part of a personal fall arrest system, to help limit the fall arrest forces in the event of a fall.

Use Instructions

1. Failure to follow all instructions and limitations on the use of Manuclave Anchor Clamps may result in serious personal injury or death.
2. Before using a personal fall arrest system, employees shall be trained in accordance with the requirements of OSHA's 29 CFR 1910.66 in the safe use of the system and its components.
3. Personal fall arrest systems, including Manuclave Anchor Clamps, shall be inspected prior to each use for wear, damage, and other deterioration. Defective components must be immediately removed from service, in accordance with the requirements of OSHA's 29 CFR 1910.66 and 1926.502.
4. The complete fall protection system must be planned (including all components, calculating fall clearance, and swing fall) before using.
5. Users must have a rescue plan, and the means at hand to implement it, that provides the prompt rescue of employees in the event of a fall or assures that employees are able to rescue themselves.
6. Store Manuclave Anchor Clamps in a cool, dry, clean environment, out of direct sunlight, when not in use.
7. After a fall occurs, the Manuclave Anchor Clamp must be removed from service and destroyed immediately.

Use Limitations

1. Manuclave Anchor Clamps are designed for single users only.
2. Per OSHA's 29 CFR 1910.66 and 1926.502 Manuclave

Anchor Clamps must only be used on structures capable of supporting at least at least 5,000 pounds (22.2 kN) per employee attached, or shall be designed, installed, and used as part of a complete personal fall arrest system which maintains a safety factor of at least two, under the supervision of a qualified person.

3. Manuclave Anchor Clamps are designed to be used in temperatures ranging from -40°F to +130°F (-40°C to +54°C).
4. Do not expose Manuclave Anchor Clamps to chemicals or harsh solutions which may have a harmful effect. Contact 3M Technical Service with any questions.
5. Caution must be taken when using Manuclave Anchor Clamps near moving machinery, electrical hazards, sharp edges, or abrasive surfaces, as contact may cause equipment failure, personal injury, or death.
6. Minors, pregnant women and anyone with a history of either back or neck problems should not use this equipment.
7. Do not use or install equipment without proper training from a "competent person" as defined by OSHA's 29 CFR 1926.32(f).
8. Only 3M, or persons or entities authorized in writing by 3M, shall make repairs or alterations to the equipment.

Compatibility Limitations

All 3M Manuclave Anchor Clamps must only be coupled to compatible connectors. OSHA's 29 CFR 1926.502 prohibits snaphooks from being engaged to certain objects unless two requirements are met: it must be a locking type snaphook, and it must be "designed for" making such a connection. "Designed for" means that the manufacturer of the snaphook specifically designed the snaphook to be used to connect to the equipment listed. The following connections must be avoided, as they are conditions that can result in rollout when a nonlocking snaphook is used:

- Direct connection of a snaphook to horizontal lifeline.
- Two (or more) snaphooks connected to one D-ring.
- Two snaphooks connected to each other.
- A snaphook connected back on its integral lanyard.
- A snaphook connected to a webbing loop or webbing lanyard.
- Improper dimensions of the D-ring, rebar, or other connection point in relation to the snaphook dimensions that would allow the snaphook keeper to be depressed by a turning motion of the snaphook.

Performance

All Manuclave Anchor Clamps meet a 5,000 lb. tensile load.

| Part Number | Material | Length | Width | Anchorage Opening | Connection Opening | Weight | Standard / Regulation |
|-------------|-----------------|-----------------|----------------|-------------------|--------------------|----------------|--------------------------------|
| 251 | Stainless Steel | 16 in. (40.6cm) | 6.8 in. (17cm) | 4.4 in. (11cm) | 1.4 in. (3.6cm) | 12 lbs. (340g) | OSHA 1910.66, OSHA 1926.502 |
| 252 | Stainless Steel | 16 in. (40.6cm) | 8 in. (20.3cm) | 5.5 in. (14cm) | 1.4 in. (3.6cm) | 13 oz. (369g) | OSHA 1910.66, OSHA 1926.502 |



Manuclave Anchor Clamp User Instructions



Installation

The Manuclave Anchor Clamp must be installed on structures capable of meeting the anchorage strength requirements of OSHA 29 CFR 1910.66 and 1926.502.

Squeeze handle together to open the top section of the Manuclave Anchor Clamp and slip over structure. Rotate handle to allow the circular part of clamp to position itself around the structure. Release the handle to allow the hooks to engage on each side.

Do not use the Manuclave Anchor Clamp on angled structures, or at the end of a run where it could slide off the end of the structure.

Do not use the Manuclave Anchor Clamp where loading is offset to the center of the Manuclave Anchor Clamp.



Inspection

All Manuclave Anchor Clamps must be inspected prior to each use, and additionally by an OSHA defined competent person other than the user annually.

Any equipment that has been subjected to the forces of arresting a fall must be removed from service.

All Manuclave Anchor Clamps must be free of cracks, sharp edges, deformation, corrosion, chemical attack, alteration, excessive heating or wear.

All markings must be legible and attached to the product.

If inspection reveals any defect, inadequate maintenance, or unsafe condition, remove from service and destroy.

Note: Only manufacturer, or entities authorized in writing by the manufacturer, may make repairs to the product.

Cleaning and Maintenance

No cleaning or maintenance is required for this product. If inspection reveals any defect, remove from service and destroy.

Product Warranty, Limited Remedy, and Limitation of Liability

WARRANTY: THE FOLLOWING IS MADE IN LIEU OF ALL WARRANTIES OR CONDITIONS, EXPRESS OR IMPLIED, INCLUDING THE IMPLIED WARRANTIES OR CONDITIONS OF MERCHANTABILITY OR FITNESS FOR A PARTICULAR PURPOSE. Equipment offered by 3M is warranted against factory defects in workmanship and materials for a period of one year from date of installation or first use by the original owner.

LIMITED REMEDY: Upon notice in writing, 3M will promptly repair or replace all defective items. 3M reserves the right to elect to have defective item returned to its plant for inspection before making a repair or replacement. Warranty does not cover equipment damage resulting from wear, abuse, damage in transit, or other damage beyond the control of 3M. 3M shall be the sole judge of product condition and warranty options. This warranty applies only to original purchaser and is the only warranty applicable to our products. A *Return Goods Authorization Number (RGA)* must be issued by 3M on all returns for warranty consideration. All returns must be shipped to 3M freight prepaid. Please contact 3M customer service department at 1-800-560-1094 for warranty assistance.

LIMITATION OF LIABILITY: In no event will 3M be liable for any indirect, incidental, special or consequential damages including, but not limited to loss of profits, in any way related to the products regardless of the legal theory asserted.

3M Occupational Health & Environmental Safety Division

4551 Raceway Drive SW
Concord, NC 28027
USA
Phone 1-800-560-1094
Fax 1-800-560-1275
www.SafeWaze.com
www.3M.com/OccSafety

Please recycle. Printed in USA.

© 2010

3M is a trademark of 3M Company,
used under license in Canada.

All rights reserved.

IM-0028 Rev A 12-2010

3M