

PARTS LIST FOR PN 28408, 12000 RPM, 4" – 5" SANDER

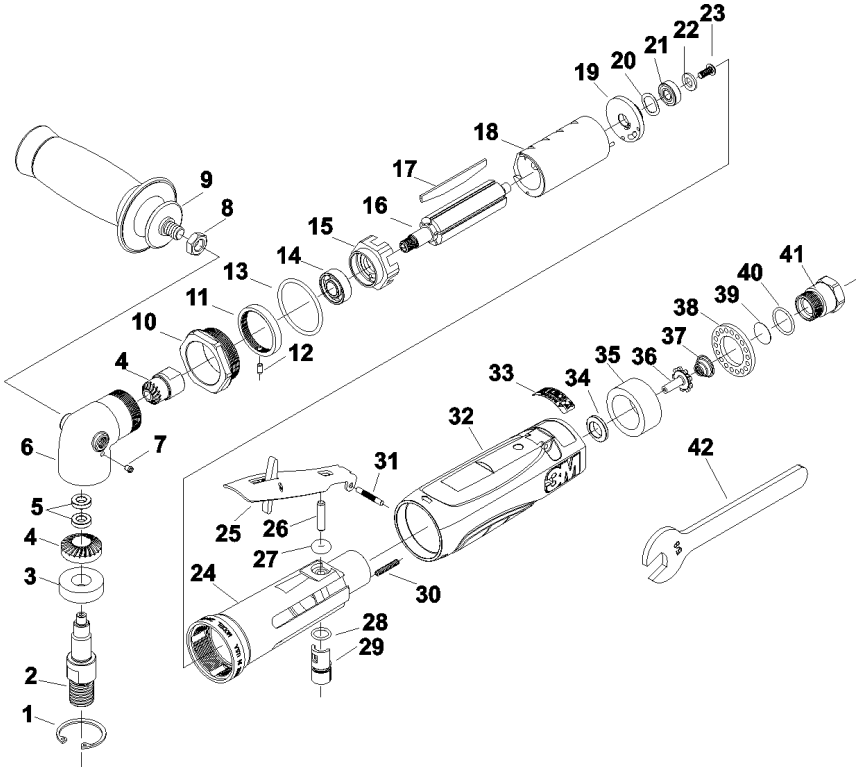


Fig. Number	3M P/N	Description	Qty
1	55088	Retaining Ring	1
2	55112	Output Spindle 5/8-11 Thread	1
3	55078	Ball Bearing	1
4	55113	Gear Set	1
5	55114	Ball Bearing .500" x .25" x .125" (2)	2
6	55111	Angle Head	1
7	06523	Grease Fitting	1
8	06503	Jam Nut	1
9	28402	Side Handle 3/8-16 EXT Thread, 3M PN28402	1
10	06653	Angle Head Clamp Nut	1
11	06655	Lock Ring	1
12	06520	Pin, 1/8 x 1/4	1
13	06609	O-Ring	1
14	06510	Ball Bearing 3/8" x 7/8" x 9/32"	1
15	06639	Front End Plate	1
16	06562	Rotor	1
17	06643	Vane, Set of 5	1
18	06563	Cylinder	1
19	06560	Rear End Plate	1
20	06527	Wave Washer .440" x .618" x .008"	1
21	06508	Ball Bearing	1
22	06567	Washer .251" x .468" x .063"	1
23	06568	Screw #8-32 X 3/8 But Hd Cap	1
24	06638	Housing	1
25	06642	Lever	1
26	06558	Torr Pin, 3/16" x 7/8"	1
27	06543	O-Ring	1
28	06511	O-Ring	1
29	06556	Regulator	1
30	06501	Screw, 6-32 x 3/4 Set Soc Hex	1
31	06559	Groove Pin, 1/8" x 7/8" Type E	1
32	06598	Housing Cover	1
33	06566	Warning Label	1
34	06552	Throttle Valve Seat	1
35	06557	Muffler	1
36	06553	Throttle Valve	1
37	06554	Taper Spring	1
38	55084	Exhaust Deflector	1
39	06555	Screen	1
40	06608	O-Ring, 1/16" x 5/8" x 3/4"	1
41	55107	Bushing, 3/8" NPT	1
42	06524	5/8" Wrench	1