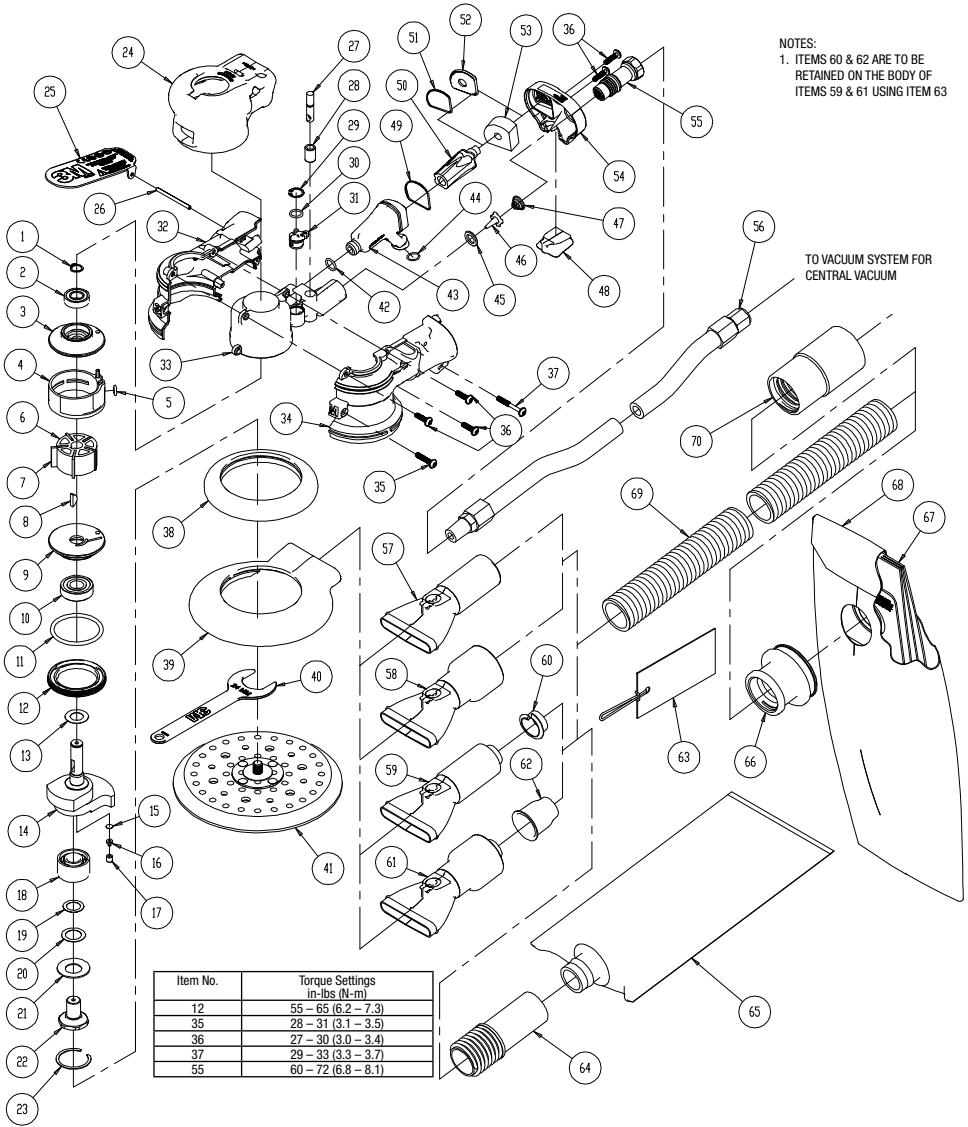


Parts Page



NOTES:
 1. ITEMS 60 & 62 ARE TO BE
 RETAINED ON THE BODY OF
 ITEMS 59 & 61 USING ITEM 63

Parts List

IT	3M UPC PN	3M P/N	DESCRIPTION	QTY.
1	28113	A0040	External Retaining Ring	1
2	55185	55185	Bearing, 10 mm x 22 mm x 6 mm deep Groove Ball (2 Shields, 6900ZZ)	1
3	55174	55174	Rear Endplate, Elite	1
4	30347	30347	Cylinder Assembly	1
5	28115	A0042	O-Ring, 5 mm x 2 mm	1
6	28170	B0005	Machined Rotor	1
7	28099	A0010	Vane	5
8	28114	A0041	3 mm x 13 mm Woodruff Key	1
9	30326	30326	Front Endplate	1
10	28106	A0019	12 mm x 28 mm x 8 mm Bearing - 2 Shields	1
11	28118	A0045	O-Ring, 39,4 mm x 3,1 mm	1
12	30337	30337	Lock Ring, 50 mm Thread	1
13	55186	55186	Front Bearing Dust Shield	1
14	28178	B0277	Shaft Balancer, 5 in. x 3/16 in. Orbit, Elite	1
	28179	B0278	Shaft Balancer, 6 in. x 3/16 in. Orbit, Elite	1
	28180	B0279	Shaft Balancer, 5 in. x 3/32 in. Orbit, Elite	1
	28181	B0280	Shaft Balancer, 6 in. x 3/32 in. Orbit, Elite	1
	28184	B0334	Shaft Balancer, 6 in. x 5/16 in. (8 mm) Orbit, Elite	1
	30325	B0348	Shaft Balancer, 5 in. x 5/16 in. (8 mm) Orbit, Elite	1
15	28132	A0122	Filter	1
16	28131	A0121	Duckbill Check Valve	1
17	28130	A0120	Valve Retainer	1
18	28148	A0938	12 mm x 28 mm x 16 mm Double Row Angular Contact Dearing - 1 Seal	1
19	28103	A0016	Spacer 12.1 mm ID x 18.0 mm OD x 0.2 Thick	1
20	55187	55187	Spindle Bearing Dust Shield	1
21	28104	A0017	Belleville Washer	1
22	28174	B0018	Spindle	1
23	28105	A0018	Retaining Ring	1
24	55204	55204	2 1/2 in. (.65 mm) Grip, Elite	OPT
	55205	55205	2 3/4 in. (.69 mm) Grip, Elite	1
	55206	55206	3 in. (.75 mm) Grip, Elite	OPT
25	55181	55181	3M™ Random Orbital Sander 2.5 mm (3/32 in.) Orbit Lever, 12,000 RPM, Elite	1
	55182	55182	3M™ Random Orbital Sander 5.0 mm (3/16 in.) Orbit Lever, 12,000 RPM, Elite	1
	55183	55183	3M™ Random Orbital Sander 8.0 mm (5/16 in.) Orbit Lever, 12,000 RPM, Elite	1
26	28109	A0031	Lever Spring Pin	1
27	28097	A0008	Valve Stem Assembly	1
28	28102	A0015	Valve Sleeve	1
29	28112	A0039	Internal Retaining Ring	1
30	28116	A0043	O-Ring, 9 mm x 1.5 mm	1
31	55172	55172	Speed Control, Elite	1
32	55208	55208	Right Hand Housing - 5/6 in. (125/150 mm), Elite	1
33	55199	55199	Inner Housing, Machined	1
33	55433	55433	Inner Housing, Machined - 5/6 in. Self-Generating Vacuum	1
34	55207	55207	Left Hand Housing - 5/6 in. (125/150 mm), Elite	1
35	55196	55196	Screw, Button Head Torx M4 x 20 mm	1
36	30321	30321	Screw, Button Head Torx M4 x 15 mm	5
37	30322	30322	Screw, Button Head Torx M4 x 30 mm	1
38	28158	A1346	5/6 in. Random Orbital Sander, Non-Vacuum Shroud	1
39	55203	55203	Ø 6 in. Low Profile Shroud, Elite	1
39	55216	55216	Ø 5 in. Low Profile Shroud, Elite	1
40	28108	A0022	24 mm Pad Wrench	1
41	N/A	N/A	1 Pad Supplied With Each Tool (Type Determined By Model)	1
42	28116	A0043	O-Ring, 9 mm x 1.5 mm	1
43	55198	55198	Exhaust Chamber	1
44	55165	55165	O-Ring, 9.5 mm x 1 mm	1
45	28098	A0009	Valve Seat	1
46	28096	A0007	Valve	1
47	28101	A0014	Valve Spring	1
48	55166	55166	Non-Vacuum Cover, Elite	1
49	55175	55175	O-Ring, 28 mm x 1 mm	1
50	55191	55191	Internal Muffler Assembly	1
51	55176	55176	O-Ring, 24 mm x 1 mm	1
52	55173	55173	Self-Generating Exhaust Cap, Elite	1
53	55179	55179	Muffler, Elite	1
54	55201	55201	End Cap, Elite	1
55	55171	55171	Inlet Bushing Assembly, Elite	1
56	20209	20209	3/8 in. Ø x 4 feet air line with ¼ in. Ø Compression fittings	OPT
57	55167	55167	3 in. x 4 in. Orbital Sander and 3 in. Central-Vacuum Swivel Exhaust Fitting - 3/4 in./19 mm Hose	OPT
58	55168	55168	Central-Vacuum Swivel Exhaust Fitting - 1 in./28 mm Hose	1
59	55169	55169	Self-Generating Vacuum Swivel Exhaust Fitting - 3/4 in./19 mm Hose	OPT
61	55170	55170	Self-Generating Vacuum Swivel Exhaust Fitting - 1 in./28 mm Hose	1
62	28146	A0778	1 in./28 mm Hose Seal	1
63	N/A	N/A	Tag with Instruction for 3M 1 in./28 mm Hose Seal	1
64	20453	20453	3M™ Filter Bag Adaptor, 1 in. EXT Hose Thread x 1 in. OD	1
65	20452	20452	3M™ Clean Sanding Filter Bag (5 in. x 12 in.)	1
66	28302	28302	1 in. Double Bag Vacuum Fitting	OPT
67	20338	20338	Vacuum Bag Insert	OPT
68	28303	A1434	3M™ Vacuum Bag	OPT
69	28301	28301	Ø 1 in. x 6 ft. Vacuum Hose	OPT
70	30324	30324	Hose End Adaptor - 1 in./28 mm Hose Thread x 1 1/2 in. OD	OPT
70	20341	20341	Hose End Adaptor 3/4 in Hose Thread x 1 in./28 mm Hose Thread	OPT