

The edge you need for the productivity you want.

Lava™ Ultimate

CAD/CAM Restorative for CEREC®

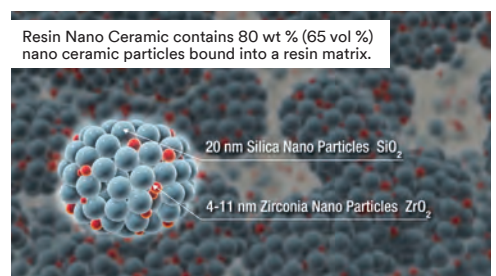
The world's first resin nano ceramic material, Lava™ Ultimate Restorative is designed for **precision**, **speed** and single-appointment **efficiency**. Because the resin nano ceramic material is less brittle than glass ceramic, it **resists chipping and cracking when milled**. Dentists can achieve **better edge quality** and smooth margins for a brilliant restoration that feels as natural as it looks. There's **no post firing**, so the **restoration is finished faster**. Simply polish to a high-quality luster. It's an advance that will improve your productivity and create a better experience for your patients.



The benefits of resin nano ceramic material

Nanotechnology and proprietary curing treatment create a unique hybrid material that offers the benefits of both glass ceramic and resin materials:

- High flexural strength adds durability to posterior restorations.
- Excellent wear resistance.
- Less wear to opposing enamel than glass ceramics.
- Brilliant and long-lasting polish.



The cementation system

Lava Ultimate restorations must be bonded with an adhesive resin cement. 3M ESPE Dental recommends RelyX™ Ultimate Adhesive Resin Cement with Scotchbond™ Universal Adhesive — primer and adhesive in one bottle. For step-by-step instructions, download a free copy of the Step by Step guide at 3MESPE.com/LavaUltimateTips.



Chairside steps to give you brilliant results

From onlays and inlays to veneers, Lava™ Ultimate Restorative is engineered specifically to help you produce efficient chairside restorations. And create results your patients will love.

Onlay clinical case study



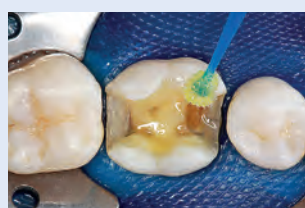
1. Initial situation



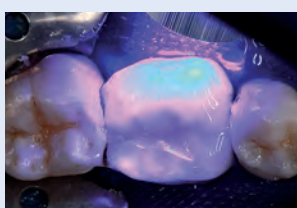
2. Tooth preparation



3. Selective etch



4. Bond with Scotchbond™ Universal Adhesive and RelyX™ Ultimate Adhesive Resin Cement



5. Light cure each surface



6. Final restoration



Lava™ Ultimate Restorative is indicated for:

- Onlays
- Inlays
- Veneers

3M ESPE
Lava™ Ultimate
CAD/CAM Restorative

For Step by Step
Guide visit:
www.3MESPE.com/LavaUltimateTips

Our Step by Step Guide for Lava Ultimate Restorative can be found online at 3MESPE.com/LavaUltimateTips.

Ordering Information

Item #	Product Information
2914SK	Lava™ Ultimate Restorative—Introductory Kit for CEREC® Kit includes: 5 blocks, size 14L: Shades A1-LT, A2-HT, A2-LT, A3-HT, A3-LT; 5 blocks, size 12: Shades A1-LT, A2-HT, A2-LT, A3-HT, A3-LT

Lava™ Ultimate Restorative for CEREC® – REFILLS

Shade	Low Translucency		High Translucency	
	Size 12 Item No.	Size 14L Item No.	Size 12 Item No.	Size 14L Item No.
A1	2912A1-LT	2914A1-LT	2912A1-HT	2914A1-HT
A2	2912A2-LT	2914A2-LT	2912A2-HT	2914A2-HT
A3	2912A3-LT	2914A3-LT	2912A3-HT	2914A3-HT
A3.5	2912A3.5-LT	2914A3.5-LT		
B1	2912B1-LT	2914B1-LT	2912B1-HT	2914B1-HT
C2	2912C2-LT	2914C2-LT		
D2	2912D2-LT	2914D2-LT		
BLEACH	2912BL-LT	2914BL-LT		



Each refill box contains 5 blocks of a single shade in size 12 or 14L.



3M Oral Care
2510 Conway Avenue
St. Paul, MN 55144-1000 USA

Phone 1-800-634-2249
Web 3M.com/LavaUltimate

3M Canada
Post Office Box 5757
London, Ontario N6A 4T1
Canada

Phone 1-888-363-3685

3M, ESPE, Lava, RelyX, and Scotchbond are trademarks of 3M or 3M Deutschland GmbH. Used under license in Canada. CEREC is not a trademark of 3M.

Please recycle. Printed in U.S.A. © 3M 2015.
All rights reserved. 70-2013-0677-9 (REV 10/2015)