

RelyX™ Unicem 2 Clicker™

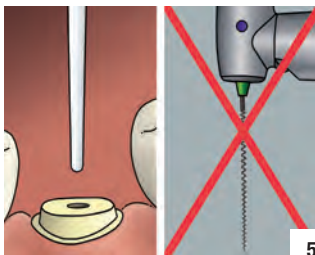
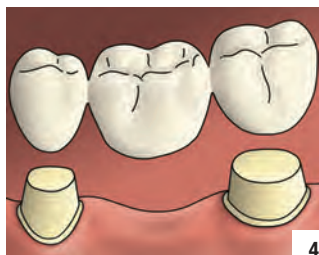
(en) Self-Adhesive Resin Cement

(de) Selbstadhäsiver Composite-Befestigungszement

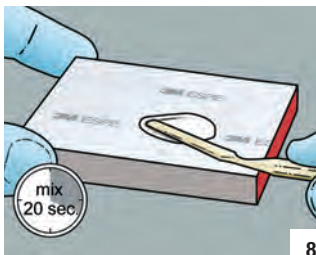
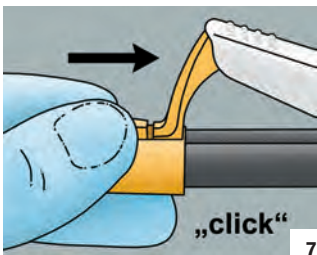
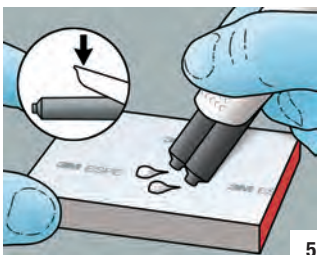
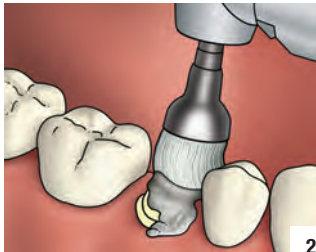
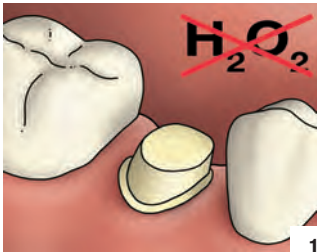
Please refer to the Instructions for Use – especially for Adhesive Bridges.
Bitte Gebrauchsinformation beachten – speziell bei Adhäsivbrücken.

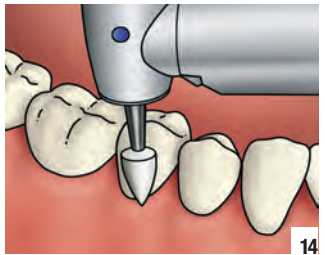
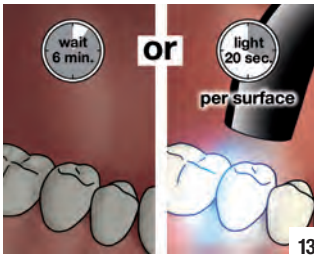
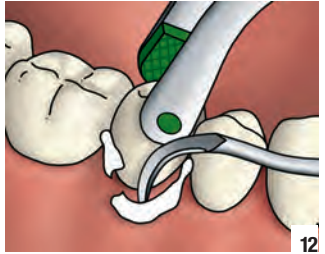
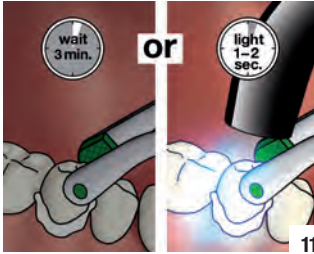
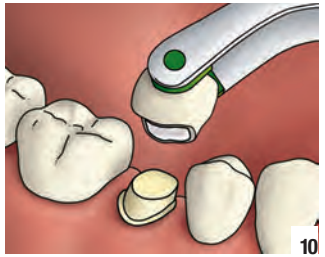
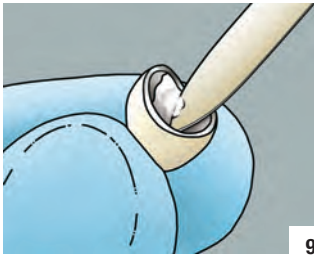


Metal – Composite – Ceramic

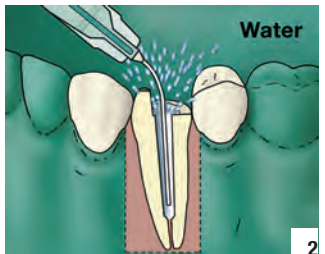
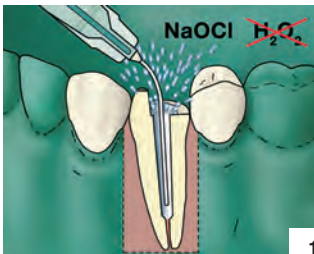


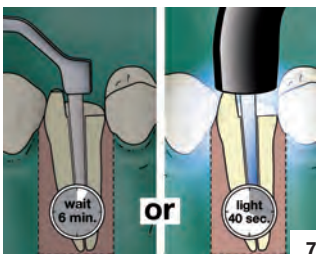
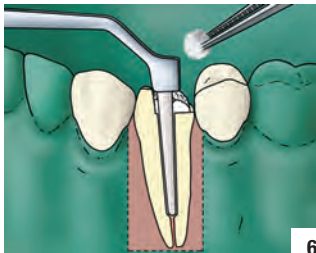
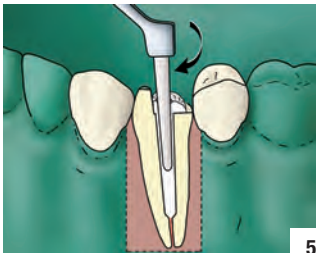
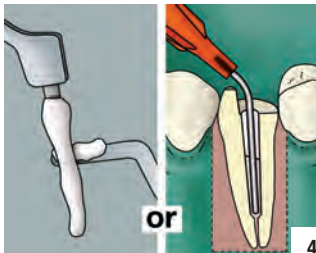
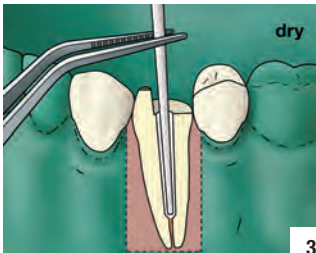
Cementation of a Restoration





Fiber Post Cementation





3M ESPE



3M ESPE AG
Dental Products
82229 Seefeld – Germany

3M ESPE
Dental Products
St. Paul, MN 55144-1000 U.S.A.



3M, ESPE, Clicker and RelyX are trademarks of 3M or 3M ESPE AG.
© 3M 2011. All rights reserved.

44000762847/02 (January 2011)