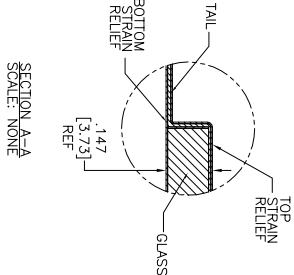
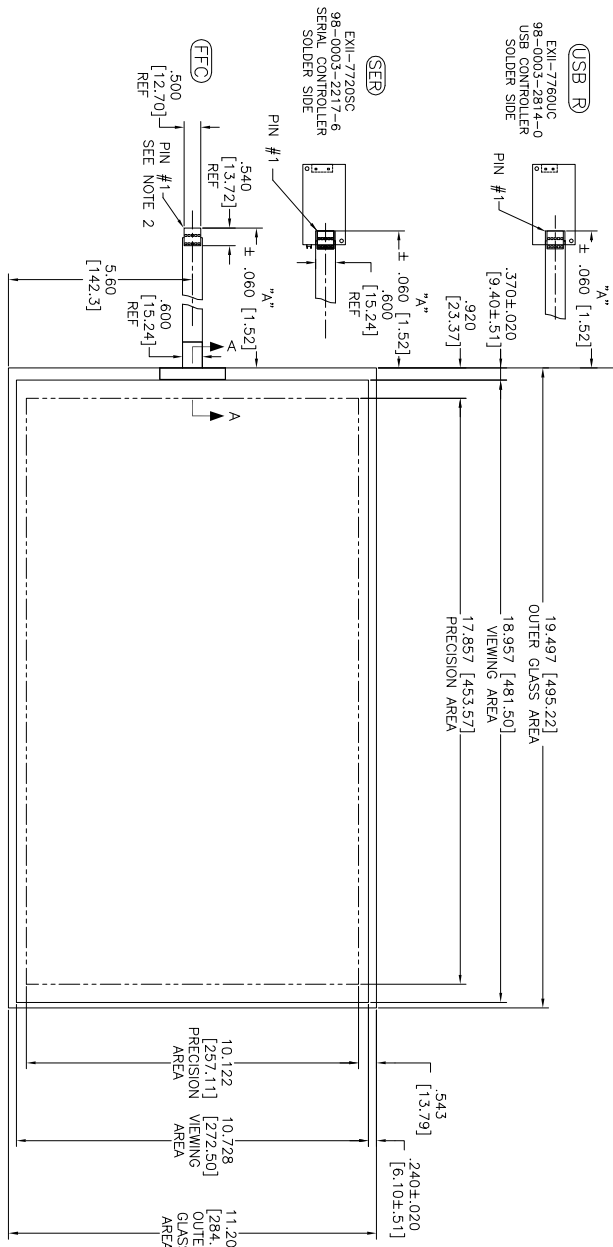


OCA DIAGONAL: 22.49 [571.22]
 VA DIAGONAL: 21.78 [553.26]
 PA DIAGONAL: 20.53 [521.37]



ESD CLAMSHELL CASE IS USED WITH ALL NOV, USB AND SER TERMINATIONS.



1.47±.020 [3.73±.51]
 TOTAL THICKNESS OF GLASS, CABLE AND STRAIN RELIEF

UNITS	INCHES [MM]
1	LR
2	LL
3	SHLD
4	UL
5	UR

- NOTES:
1. WEIGHT OF GLASS IN GRAMS: 1119±10%
 2. NICOMATIC HOUSING P/N: OLOS
 3. NICOMATIC RECEPTACLES (PINS) MATTE TIN PLATED P/N: 14106-12
 4. HOUSING ORIENTED WITH LATCH DOWN

US NUMBER	TYPE	DIM "A" (TOTAL GLASS TO CONNECTOR)	A/G FINISH	PROD. SPEC
98-0003-3489-0	SER	8.00" [203.20]	AG500	23655
98-0003-3490-8	USB R	8.00" [203.20]	AG500	23655
98-0003-3936-0	FFC	8.00" [203.20]	AG500	23655

UNITS: INCHES [MM]
 TOLERANCES UNLESS SPECIFIED:
 .XX ±.03 [.76]
 .XXX ±.015 [.38]
 ANGLES 4:1
 THIRD ANGLE PROJECTION
 DO NOT SCALE DRAWING
 SCALE 1 = 1



REV	DATE	BY	CHK	APP
E	4/13	SB		
D	2/12	SB		
C	11/11	SB		

MARKETING DRAWING
 SCT32NN 21.78" W

REV	DATE	BY	CHK	APP
E	4/13	SB		
D	2/12	SB		
C	11/11	SB		

