

3M™ Impregum™ Polyether Impression Material

Lab handling guidelines for polyether impressions



Control



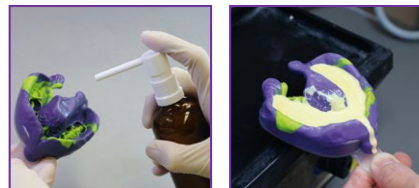
Please inspect the surface quality of the impressions arriving in the lab (no mushy, unset surfaces). Surfaces should appear detailed and crisp.

Disinfection



The impression should be kept dry when sent to the lab. Any commercial water-based disinfectant indicated for dental impression materials can be used. After disinfection, rinse with water and dry. Temperatures exceeding 60°C/140°F will damage polyether impressions.

Pouring the cast



Prepare the cast no earlier than 30 minutes and no later than 14 days after taking the impression.

Surfactants (de-bubblizers) are not needed or recommended. Type 3 stone, type 4 or 5 die stone can be used to pour polyether impressions. When pouring polyether impressions with epoxy, or any urethane resin based materials, a separator must be used to prevent adhesion of the materials.

Scanning the impression



3M™ Impregum™ Super Quick Material is scannable with the current generation of impression scanners. Depending on the scanner technology, the application of scanning sprays or powders might be indicated.

With modern LED line scanners (e.g. D2000, E3 from 3Shape) impression materials can be digitized without any surface treatment for easy access to CAD/CAM workflows.

3M™ Impregum™ Polyether Impression Material

Lab handling guidelines for polyether impressions

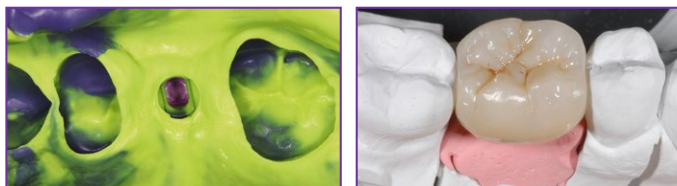
Improved removal



Heating the impression to approx. 40°C/104°F after the cast has set will help in the removal of the cast. This is easily done by immersing the impression in water. Block out or minimize undercuts if information is not needed. Isolating or blocking out the palatal area will help in removal of the cast on a maxillary impression with a deep vault.

Custom trays are not required during conventional crown and bridge procedures. If you choose to use custom trays, make sure that you have 2-3 mm material thickness per 1 mm of undercut. You may section or cut the custom tray if it has “locked-on” to the cast. Immersing the impression in hot water will soften the adhesive and allow for separation without damage.

Implant impressions



Choosing the gingival mask material in combination with the proper separating material is important:

- a) 3M polyethers (3M™ Vestogum™, 3M™ Impregum™ Garant™ L DuoSoft™ (Quick), 3M™ Impregum™ Soft Light Body Garant™ or hand mix, 3M™ Permadyne™ Heavy Body hand mix) can be used with common separators based on silicone, wax, or petrolatum (vaseline).
- b) C-silicones (GI-MASK®, Coltene®) can be used without a separator.
- c) Use caution with A-silicones (VPS), they should be used only with a separator that forms a sealed solid waxy layer (Sherasepal-U®, Shera®).

Separating materials can be applied with a brush.

Storage



Do not store polyether impressions in sealed plastic bags while still moist. Avoid direct sunlight exposure. Store in a dry place at room temperature 23°C/73°F. Polyether impressions can be poured anytime within 14 days after they have been made if stored properly.