

# Ordering Information



**Item No.**

**3525A**

**Product Information**

**RelyX Luting 2 Luting Cement Refills**

2 – 11 g RelyX Luting 2 Luting Cement in Clicker Dispenser,  
1 Mixing Pad, illustrated technique guide and instructions for use.

**3M ESPE**

SCREEN-OPTIMIZED, 72 DPI

A click that makes you smile



# RelyX<sup>TM</sup> Luting 2

*Luting Cement  
in the Clicker<sup>TM</sup> Dispenser*

**3M ESPE**

3M ESPE AG · ESPE Platz  
82229 Seefeld · Germany  
E-Mail: info3mespe@mmm.com  
Internet: <http://www.3mespe.com>

3M, ESPE, Clicker and RelyX  
are trademarks of 3M or  
3M ESPE AG.  
FujiCEM and Fujil are trade-  
marks of GC.

© 3M 2006. All rights reserved.

Indications:

- Metal crowns, inlays and onlays (including stainless steel crowns)
- Porcelain-fused-to-metal crowns and bridges
- All-zirconia or all-alumina strengthened core-ceramic restorations (such as Lava™ Crowns & Bridges)
- Endodontic pins and posts
- Orthodontic appliances

# RelyX™ Luting 2 for Simplicity Plus Reliability

## Convenience Mixes Well with Your Cementation Routine

Through permanent innovation 3M ESPE has acquired a leading position in the field of dental cementation. RelyX™ Luting 2 Luting Cement is a trusted brand in the daily practice of thousands of dentists worldwide. The new member of the brand family, RelyX Luting 2, offers state-of-the-art technology in delivery and formulation. The advanced resin-modified glass ionomer cement with paste-paste delivery adds simplicity and convenience to a material class that was established by 3M ESPE and is very well proven with a clinical history of over 10 years.

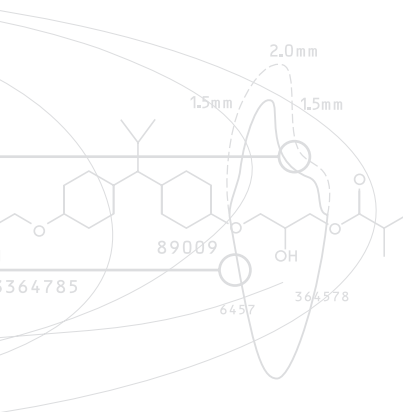
## Simply Click and Mix



Convenient delivery from the Clicker™ Dispenser for 1:1 dosing and easy mixing.

## Directly from the Clicker™ to the Pad

Without additional hardware the double-barrel Clicker™ Dispenser offers a hygienic and fast delivery of the required quantity in a consistent mix ratio. RelyX Luting 2 Luting Cement allows simple dosing and easy paste-paste mixing ensuring consistent material properties. It makes routine cementation more convenient and reliable while waste and clean-up are significantly reduced.



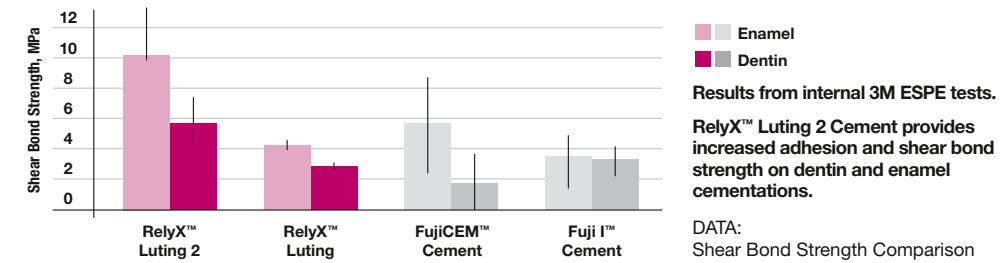
# Multiple Strengths of a Clinically Proven Formula

## A Plus in Performance

The advanced resin-modified glass ionomer formulation of RelyX™ Luting 2 Luting Cement offers proven clinical benefits with improved product performance compared to conventional powder-liquid cements.

## Strong Adhesion

RelyX Luting 2 provides excellent adhesion to a wide range of restoration materials and high bond strength to dentin and enamel.



## Very Low Post-operative Sensitivity

There are virtually no post-operative sensitivities caused by RelyX Luting 2.

## Easy Removal of Excess Material

Excess material of RelyX Luting 2 can easily be removed after the seating of the restoration.

## Low Film Thickness

The low film thickness of RelyX Luting 2 allows a very tight fitting indirect restorations to seat completely.

## Integrity of Margin, Low Solubility

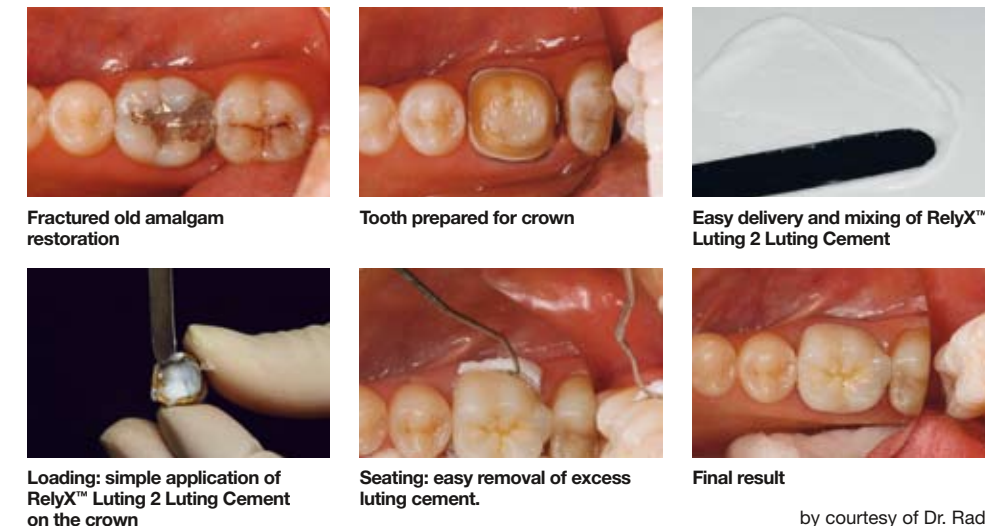
The low solubility ensures the long-term integrity of the margin and helps to prevent wash-out of luting cement under indirect restorations.

## Fluoride Release

The fluoride release of RelyX Luting 2 is even higher than with the conventional glass ionomer cement RelyX™ Luting.

- Easy and hygienic handling with Clicker™ Dispenser
- Consistent mix ratios
- Paste-paste formulation for easy mixing
- Strong adhesion
- Easy removal of excess material
- Very low post-operative sensitivity
- Enhanced marginal integrity
- Sustained fluoride release

## Five Simple Steps: Deliver, Mix, Load, Seat and Remove



by courtesy of Dr. Radz