

3M ESPE

The TOTAL-ETCH ADHESIVE you
trust now comes in our UNIT DOSE.



AdperTM ScotchbondTM 1 XT

Adhesive Systems from 3M ESPE

Performance backed
by a proven adhesive.

Adper™ Scotchbond™ 1 XT Adhesive

Based on proven performance.

3M™ ESPE™ Adper™ Scotchbond™ 1 Adhesive is an ethanol/water based, 5th generation adhesive – widely known for excellent *in vitro* and *in vivo* clinical performance.

Three-Year Clinical Evaluation of Filtek P-60 Packable Composite Restorations

Objectives: The purpose of this prospective clinical trial was to assess the 3-year clinical performance of the packable composite Filtek P-60 (3M) in combination with the one-bottle adhesive Single Bond (3M) in Class II restorations. Methods: A total of 47 restorations were placed into Class II cavity preparations (27 premolars and 20 molars) of 33 patients (22 female/11 male; mean age 34) by one operator. Restorations were evaluated by two examiners at baseline, 1, 2 and 3 years according to the modified USPHS criteria observing the following characteristics: Retention, Marginal Integrity, Anatomical Form, Surface Texture, Marginal Discoloration, Surface Staining, Post-op Sensitivity, Soft-tissue Health, Maintenance of Interproximal Contacts and Secondary Caries. Chi-square and Fisher's exact tests were used for statistical analysis ($P = 0.05$).

of the restorations examined were clinically acceptable after 3 years of service.

Kiremitci A., "Three-year Clinical Evaluation of Filtek P-60 Packable Composite Restorations"
J Dent. Res, 82 (Special Issue B), 195 (abstr. 1466) (2003).

The unique unit dose
delivery system from
3M ESPE:

- Fast and easy – simply press one chamber and use.
- Hygienic to use.

Recently, 3M ESPE added nanofiller technology, similar to that first used in Filtek™ Supreme Universal Restorative. The resulting adhesive, Adper Scotchbond 1 XT, offers even higher bond strengths.

You have been asking for a TOTAL-ETCH adhesive in our UNIT DOSE ...and here it is!

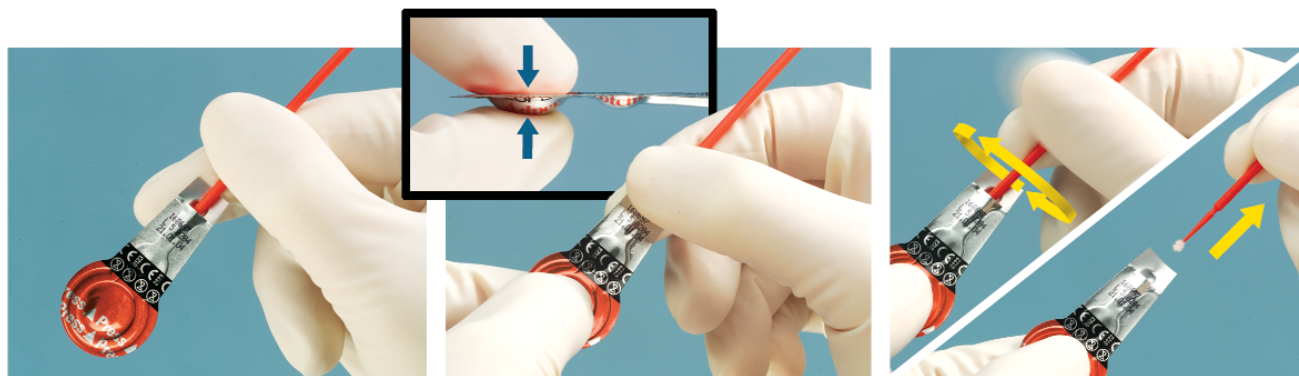
- Reduce procedure time from start to finish. With the unit dose delivery, there is no measuring, mixing or cleanup.
- The unique design is self-contained, and holds everything from adhesive to brush-tip applicator.
- Unit dose promotes hygienic practices.



The unique unit dose from 3M ESPE is easy to use.

Fast and convenient.

Using the unit dose is easy. Just squeeze the large blister to transfer the adhesive into the chamber enclosing the applicator. Briefly spin the applicator to fully saturate with adhesive and use. The technique is fast and convenient. When you're finished, just discard the applicator. There is no messy cleanup.



Now with nanofiller.

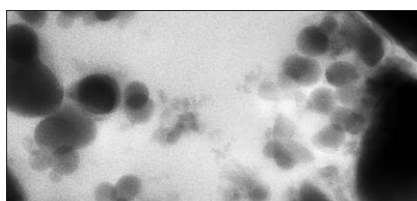
Assurance of consistency in every drop.

The extremely small particle size of nanofiller used in Adper Scotchbond 1 XT adhesive means the filler stays in suspension without the need of shaking.

Dentists not only save time by eliminating the shaking step, but they can have total confidence the adhesive is perfectly mixed – straight from the vial – every time.



3M ESPE nanoparticles



competitor's filler

Using proprietary technology, the nanofiller in Adper Scotchbond 1 XT adhesive is incorporated into the adhesive as discrete, uniform-sized particles.

And, due to their extremely small size (just 5 nanometers in diameter), they stay in suspension – so, unlike other filled adhesives with larger-diameter particles, no shaking of the bottle is needed before use.



Scotchbond 1 XT

OptiBond Solo™ Plus

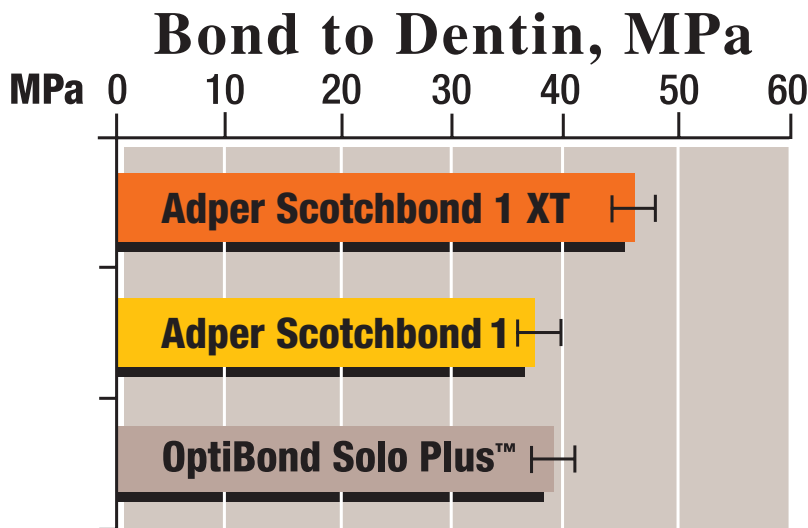


Source: 3M ESPE Laboratory test data

A stronger adhesive for improved performance.

Stronger than ever.

Adper Scotchbond 1 XT adhesive offers all the benefits of the clinically-proven Adper Scotchbond 1 adhesive, and now includes nanofiller technology. The improved adhesive provides higher bond strengths that can lead to more successful procedures and a whole new level of confidence for dentists and patients.

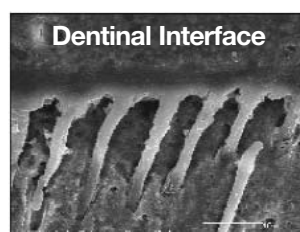
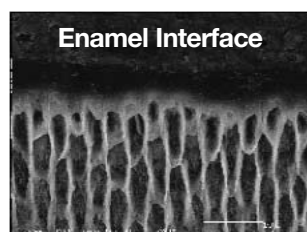


Microtensile bond evaluation shows significant improvement in dentin bond strength. DR. JORGE PERDIGAO (University of Minnesota, USA)

Excellent for all light-cured direct and indirect indications.

As with the original Adper Scotchbond 1 adhesive, Adper Scotchbond 1 XT total-etch adhesive is an advanced combination of glass ionomer and ethanol-based adhesive technology that shows excellent performance for:

- **all classes of direct composite restorations**, as well as root surface desensitization and porcelain veneers.*
- **indirect restorations after light curing****— the film thickness measured less than 10 microns in a study conducted by Dr. Patricia N. R. Pereira.



SEM images reveal excellent bond adaptation to etched enamel and dentinal surfaces.

DR. PATRICIA N. R. PEREIRA

*With 3M™ ESPE™ RelyX™ Ceramic Primer and 3M™ ESPE™ RelyX™ Veneer Cement.

**When combined with 3M™ ESPE™ RelyX™ ARC Adhesive Resin Cement.

Adper Scotchbond 1 XT Adhesive offers greater confidence.

- Superior bond strength provides exceptional bonding performance.
- Nanofiller is stable and will not settle – no shaking required.
- Compatible with all light-cured composite restoratives available today.

Adper™ Scotchbond™ 1 XT Adhesive from 3M ESPE offers improved performance.

Adper Scotchbond 1 XT adhesive is based on the clinically-proven Adper™ Scotchbond™ 1 Adhesive. It is a total-etch, visible-light activated dental bonding agent – now incorporating nanofiller technology.

In addition to higher bond strengths, there are more good reasons to use Adper Scotchbond 1 XT adhesive:

- Two popular delivery options: unit dose system or vial.
- Save time with the easy-to-use 3M ESPE unit dose. Promotes hygienic practices.
- Get consistency in every drop using the vial delivery. 3M ESPE nanofiller won't settle, so dispenses perfectly mixed straight from the vial – without shaking before use.
- It bonds to etched enamel and dentinal surfaces, so it's excellent for all light-cured direct and indirect indications.

The total-etch adhesive you have trusted since 1997 now includes nanofiller for even better performance.

And, dentists now can choose a vial or unit dose delivery system!



Product Information

Adper™ Scotchbond™ 1 XT Unit Dose

51010 Adper Scotchbond 1 XT Unit Dose Kit (40)
Kit contains: 40 Adper Scotchbond 1 XT Adhesive Unit Dose Applicators¹, 1 – 3ml Etchant Syringe¹.

51011 Adper Scotchbond 1 XT Adhesive Unit Dose Kit (100)
Kit contains: 100 Adper Scotchbond 1 XT Adhesive Unit Dose Applicators¹, 1 – 3ml Etchant Syringe¹.



Adper™ Scotchbond™ 1 XT Vial

4241 Adper Scotchbond 1 XT Adhesive Intro Kit (vial)
Kit contains: 1 Adper Scotchbond 1 XT Vial – 6g Adhesive¹, 2 – 3ml Etchant Syringes¹, 1 Transcoject Tip¹, Mixing Wells¹, 1 Brush Handle¹, 1 Bag of Brush Tips¹.

4242 Adper Scotchbond 1 XT Refill
1 Adper Scotchbond 1 XT Vial – 6g Adhesive.

¹Also available separately.



3M ESPE

Name

Vskd Askklfgajer
Fayhin Sieklt Hainety
Askkl Sieklt Hainety
Country

Name

Vskd Askklfgajer
Fayhin Sieklt Hainety
Askkl Sieklt Hainety
Country

Name

Vskd Askklfgajer
Fayhin Sieklt Hainety
Askkl Sieklt Hainety
Country

3M, ESPE, Adper, Scotchbond are trademarks of 3M or 3M ESPE AG. Used under license in Canada. OptiBond Solo is a brand of Kerr Dental.

000000000/0 (xx.xx)

10% post-consumer waste paper

Printed in Country
© 3M 2004