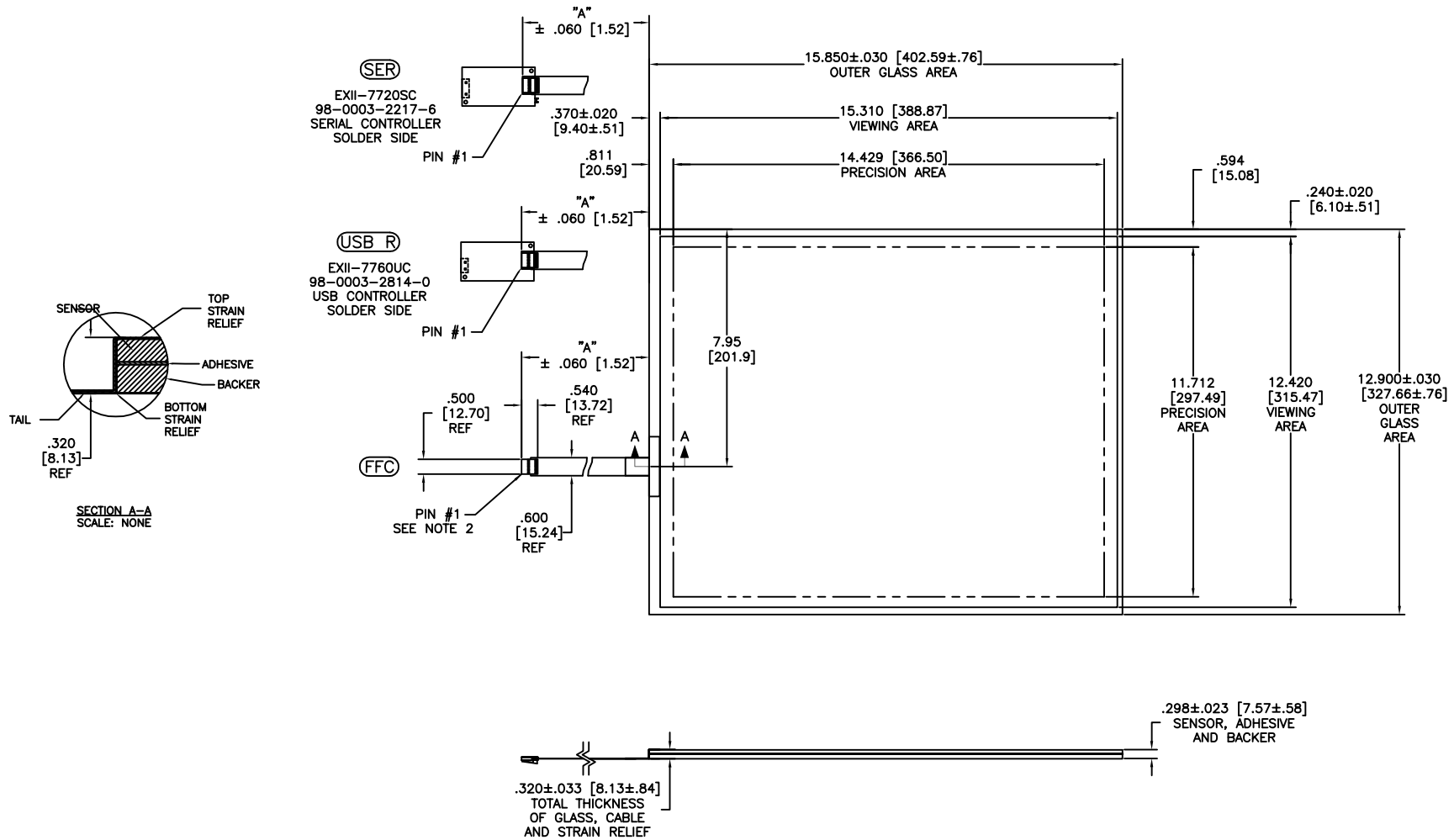


OGA DIAGONAL: 20.44 [519.08]
 VA DIAGONAL: 19.71 [500.74]
 PA DIAGONAL: 18.58 [472.03]

US NUMBER	TYPE	DIM "A" (TOTAL GLASS TO CONNECTOR)	A/G FINISH	PRODUCT SPEC
98-0003-3183-9	FFC	8.00" [203.20]	AG500	36235
98-0003-3184-7	SER	8.00" [203.20]	AG500	36235
98-0003-3185-4	USB R	8.00" [203.20]	AG500	36235



NOTES:

- WEIGHT OF GLASS IN GRAMS: 2366 ± 10%
- NICOMATIC HOUSING P/N: OLO5
 NICOMATIC RECEPTACLES (PINS) MATTE TIN PLATED P/N: 14106-12
 HOUSING ORIENTED WITH LATCH DOWN

PINOUT	
1	LR
2	LL
3	SHLD
4	UL
5	UR

UNITS	INCHES [MM]
TOLERANCES UNLESS OTHERWISE SPECIFIED	
.X	±
.XX	±.03 [.76]
.XXX	±.015 [.38]
ANGLES	±1°

3M 3M TOUCH SYSTEMS
 METHUEN, MA
 USA

© COPYRIGHT 2005
 THIS DOCUMENT IS COPYRIGHTED PROPERTY OF THE 3M COMPANY AND MAY NOT BE REPRODUCED WITHOUT 3M WRITTEN PERMISSION OR USED OR DISCLOSED FOR OTHER THAN 3M AUTHORIZED PURPOSES.

THIRD ANGLE PROJECTION

DO NOT SCALE DRAWING

SCALE 1 = 1

REV	CHANGE NOTICE	DATE	DRW
C	REVISED PER CO 033533	9/11	SB
02	REVISED PER CO 030448	5/09	SB
01	INITIAL RELEASE PER CO 029934	1/09	MTD

TITLE

MARKETING DRAWING
 SCT76NN 19.71"

DRAWN MTD 1/15/09

CAD FORMAT AUTOCAD SHEET 1 OF 1

SIZE C DOCUMENT NO. 36487-MKT REV C