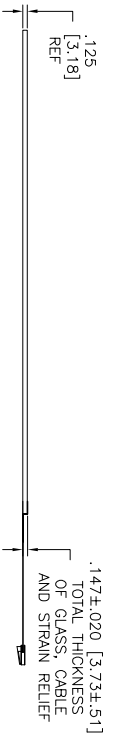
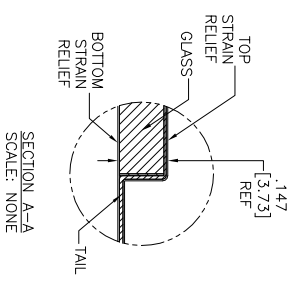
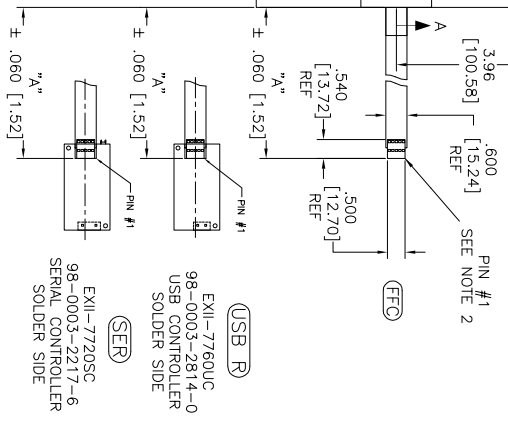
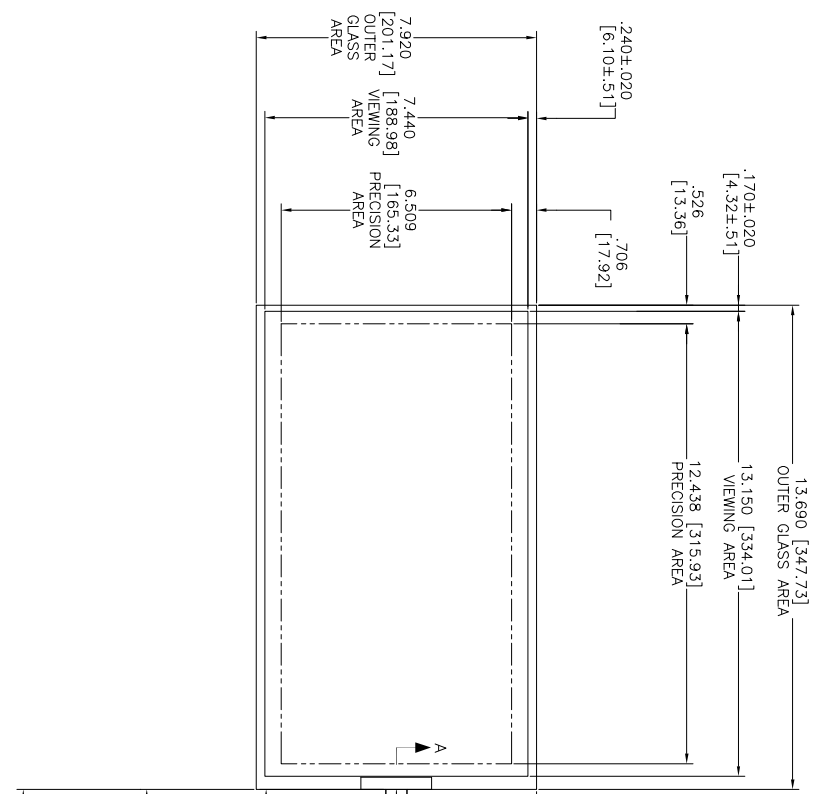


OGA DIAGONAL: 15.82 [401.72]
 VA DIAGONAL: 15.11 [385.76]
 PA DIAGONAL: 14.04 [356.57]

TOP LEVEL NUMBER	US NUMBER	TYPE	DM "A" (TOTAL GLASS TO CONNECTION)	A/G FINISH	PROD SPEC
17-9601-205	98-0003-2273-9	FCG	8.00" [203.20]	AG500	23655
17-9601-226	98-0003-3267-0	USB R	8.00" [203.20]	AG500	23655
17-9601-227	98-0003-3268-8	SER	8.00" [203.20]	AG500	23655



- NOTES:
1. WEIGHT OF GLASS IN GRAMS: 555±10%
 2. NICOMATIC HOUSING P/N: 0L05
 3. NICOMATIC RECEPTACLES (PINS) MATTE TIN PLATED P/N: 14106-12
 4. HOUSING ORIENTED WITH LATCH DOWN

PINOUT
1 UL
2 UR
3 SHLD
4 LR
5 LL

UNITS INCHES [MM]

TOLERANCES UNLESS OTHERWISE SPECIFIED
 X ±.03 [.76]
 .XX ±.015 [.38]
 .XXX ±.015 [.38]
 ANGLES 4:1

© COPYRIGHT 2004 3M TOUCH SYSTEMS
 3M TOUCH SYSTEMS
 USA
 THIS DOCUMENT IS THE PROPERTY OF THE
 COMPANY AND IS NOT TO BE REPRODUCED
 WITHOUT THE WRITTEN PERMISSION OF THE
 COMPANY. THIS DOCUMENT IS NOT TO BE
 REPRODUCED FOR OTHER THAN 3M AUTHORIZED
 PERSONS.

REV	DATE	BY	CHKD	APP'D
F	4/13	SB		
E	2/12	SB		
D	10/11	SEB		
C				

MARKETING DRAWING
 SCT32NN 15.11" W

DO NOT SCALE DRAWING

SCALE 1 = 1

DRAWN S.Berford 10/09/08

SIZE C

DOCUMENT NO. 36238-MKT

SHEET 1 OF 1

REV F