

**3M** Science.  
Applied to Life.™



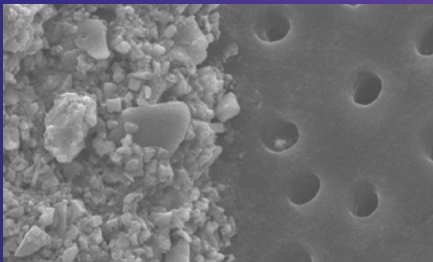
**Fast sensitivity relief.  
Slow fluoride release.**

**Vanish™ XT  
Extended Contact Varnish**

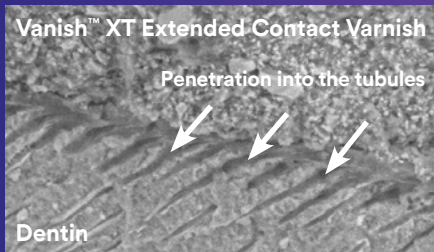


# Long-term protection

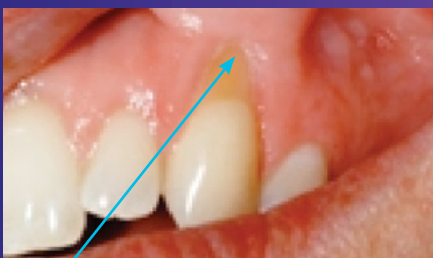
## Vanish™ XT Extended Contact Varnish seals and protects dentin tubules



SEM image of exposed dentin tubules (right) and Vanish™ XT Extended Contact Varnish (left) at 3000x magnification illustrates the barrier effect.



Cross-sectional SEM image of Vanish™ XT Extended Contact Varnish coated on dentin at 1000x magnification illustrates the resin tags penetrating the tubules.



Vanish™ XT Extended Contact Varnish is virtually invisible when applied to the tooth surface.

## The protective barrier that immediately relieves sensitivity, delivers fluoride and lasts 6 months.

Vanish™ XT Extended Contact Varnish is a site-specific, light cured, durable coating that provides an immediate layer of protection to relieve dentinal hypersensitivity.

- Great for protecting exposed, sensitive root surfaces, especially newly cleaned surfaces following scaling and root planing
- Remains on the tooth for 6 months or longer
- Moisture tolerant: no need to dry or pre-treat the root surface
- Does not require the use of a rubber dam
- Delivers fluoride, calcium and phosphate

## Vanish XT reduces dentin permeability by 88%<sup>1</sup>

Occluding dentinal tubules in-office provides immediate relief from pain associated with the movement of fluid through open tubules. In addition to creating a protective layer on exposed dentin, Vanish XT has been shown to both penetrate and seal tubules. Laboratory testing demonstrates that Vanish XT varnish reduces dentin permeability by 88%.

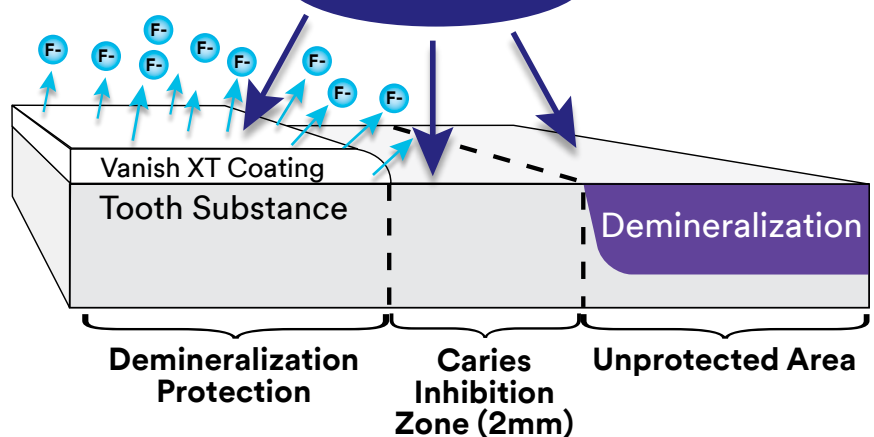
## Vanish XT protects the tooth surface from acid attack

In vitro tests conducted with Vanish XT demonstrate that the coating:

- Creates a barrier against demineralization and acid erosion<sup>2</sup>
- Provides protection beyond the coating<sup>2</sup>
- Helps repair demineralized enamel adjacent to the coating<sup>3</sup>

## Fluoride Ions

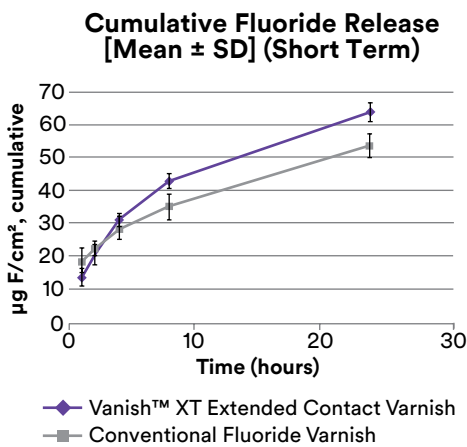
## Acid Challenge



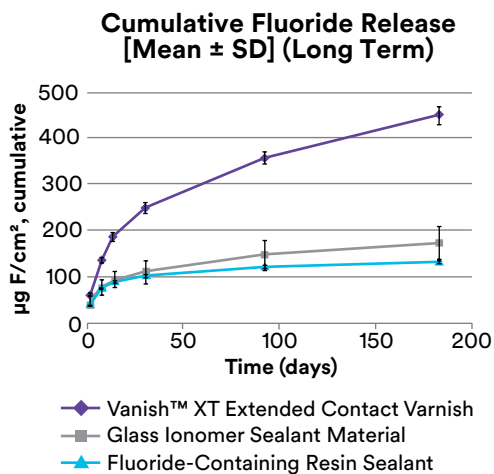
# Immediate relief

## Vanish™ XT Extended Contact Varnish contains fluoride and is “recharged” by fluoride toothpaste

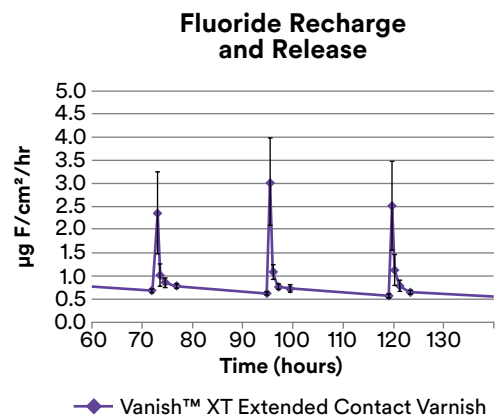
Vanish™ XT Extended Contact Varnish is a resin-modified glass ionomer material that releases fluoride, calcium and phosphate. This makes it unique versus other in-office desensitizers. In the first 24 hours, Vanish XT releases more fluoride than a conventional fluoride varnish. Plus, Vanish XT is recharged every time the patient brushes with fluoride toothpaste. Your patients not only get the protection of a physical barrier, they get the benefit of long-term fluoride delivery.



In vitro testing shows Vanish™ XT Extended Contact Varnish releases more fluoride over 24 hours than a conventional varnish.



In vitro testing shows Vanish™ XT Extended Contact Varnish releases more fluoride over 6 months than other coatings.



In vitro testing shows Vanish™ XT Extended Contact Varnish is recharged by brushing with fluoride toothpaste.

Source: 3M internal data

## The Complete Solution—check out the differences

Existing dentinal hypersensitivity relief products offer multiple benefits, but no other product offers all the advantages of Vanish XT Varnish.

	Immediate Sensitivity Relief	Long-Term Coating	Moisture Tolerant	Fluoride Release	Calcium Release
Vanish™ XT Extended Contact Varnish	✓	✓	✓	✓	✓
Glutaraldehyde-based Desensitizers (e.g. Gluma™, Calm-it®)	✓	✓			
Resin-based Desensitizers (e.g. Seal & Protect™)	✓	✓			
Conventional Fluoride Varnishes (e.g. Duraphat®)	✓		✓	✓	



1. Rusin et al. (2008). Dentin Permeability of a New Protective Coating Material. *J. Dent. Res.* 87 (Spec Iss A): #1041.  
 2. Rusin et al. (2008). Demineralization Protection of a New Protective Coating. *J. Dent. Res.* 87 (Spec Iss B): #627.  
 3. 3M internal data

# Vanish™ XT Extended Contact Varnish is easy to use and does not require the use of a rubber dam.

## Vanish™ XT Extended Contact Varnish Exposed Root Surface Sensitivity Application



1. Clean the tooth surface



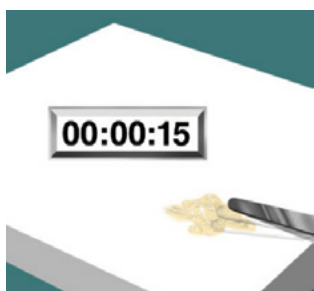
2. Rinse with water



3. Remove excess, pooled water



4. Dispense onto mixing pad



5. Mix for 15 seconds  
(2.5-minutes working time)



6. Apply thin layer to tooth surface



7. Light cure for 20 seconds



8. Wipe the coating with a moist cotton applicator

## Ordering Information



Item #	Product Description
12148	Vanish™ XT Extended Contact Varnish 1 - 10g Clicker™ Dispenser

To learn more about using Vanish XT for protecting enamel surfaces and for patients with orthodontic brackets, visit

[www.3M.com/PreventiveCare](http://www.3M.com/PreventiveCare)



3M Oral Care  
2510 Conway Avenue  
St. Paul, MN 55144-1000 USA  
Phone 1-800-634-2249  
Web 3M.com/dental

3M Canada  
Post Office Box 5757  
London, Ontario N6A 4T1  
Canada  
Phone 1-888-363-3685

3M, 3M Science. Applied to Life., ESPE, Clicker and Vanish are trademarks of 3M or 3M Deutschland GmbH. Used under license in Canada. Printed in USA. © 3M 2016. All rights reserved. 70-2013-0148-1