

Title: Importing Data from 3M™ Microbial Luminescence System-USB [MLS-USB] into Microsoft Excel®

Number: TB.071.00

Effective Date: February 2008

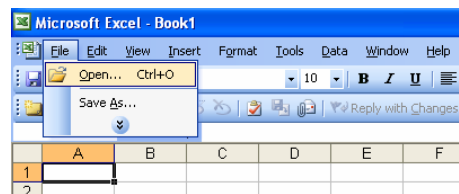
Supersedes: New

Technology Platform: 3M™ Microbial Luminescence System [MLS]

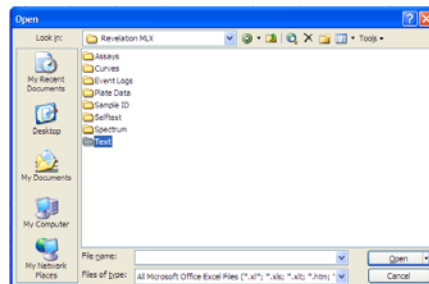
Originating Location: St. Paul, Minnesota

The purpose of this Technical Bulletin is to provide a protocol to import the MLS data from the 3M™ MLS-USB [USB port] into Microsoft Excel [MS-Excel].

1. Open MS-Excel (version 2003 used in this example).
2. Click on “File” and then select “Open”.

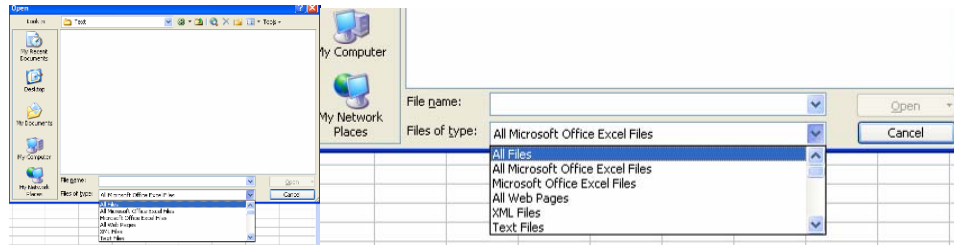


3. Navigate through the Windows® File Selection options to find the data (typically in C:\Program Files\Dynex Technologies\Revelation MLX\Text).

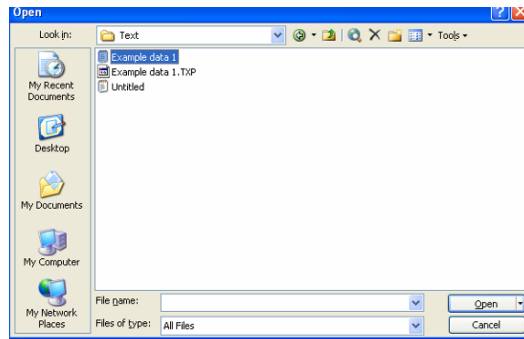


4. In the bottom of the “Open” screen are options of what file type to select (defaults to All Microsoft Office Excel Files). Select “All Files” from the drop-down menu.

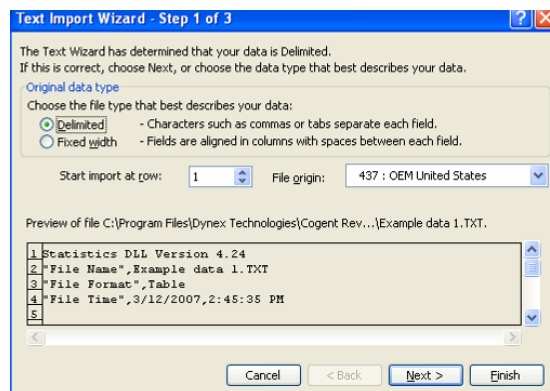
3M Microbiology Technical Bulletin



5. A list of all of.txt files containing data from UHT runs will be displayed. Select the file to import and then click on the “Open” button.

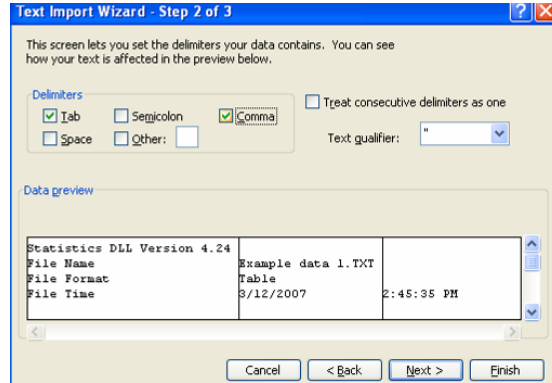


6. The Text Import Wizard will open and provide a number of options for importing the data. Ensure “Delimited” is selected and click on the “Next” button.

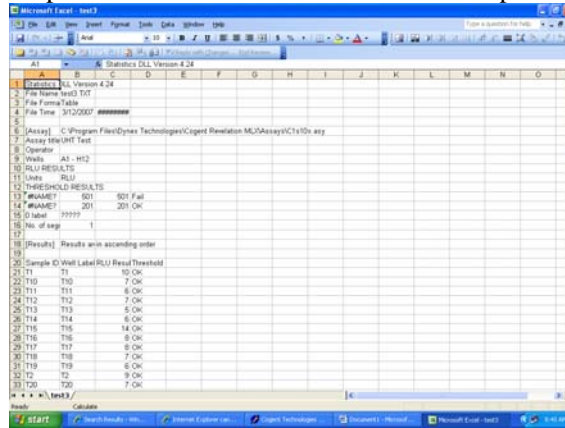


7. From the next screen, ensure “Comma” checkbox is checked and then click on the “Next” button.

3M Microbiology Technical Bulletin

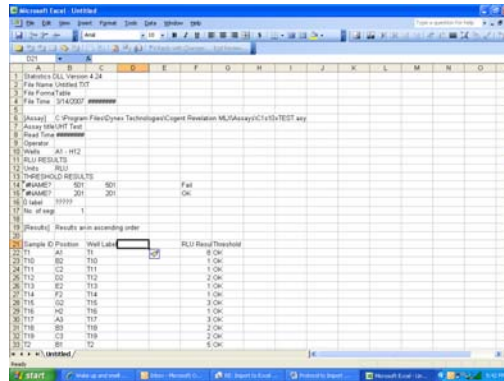


- Click next on the final Text Import Wizard screen and the data will be imported into Excel.



NOTE: depending on the settings of the Revelation™ MLX Software, the wells may be ordered “T1, T10, T11....T19, T2, T20, T21....etc.”

- Insert two columns to the left of the RLU Results column.



3M Microbiology Technical Bulletin

- In the first column select the cell immediately to the right of the "T1" under the Well Label. Select Insert, Function, and select the "MID" function. Click on the Text space and then on the Well Label cell containing the "T1", then enter 2 in the Start_num and Num_chars spaces...click OK.

The screenshot shows a Microsoft Excel spreadsheet with the following data:

Sample ID	Position	Well Label	RLU Result	Thresh
T1	A1	T1		8 OK
T10	B2	T10		1 OK
T11	C2	T11		1 OK
T12	D2	T12		2 OK
T13	E2	T13		1 OK
T14	F2	T14		1 OK
T15	G2	T15		3 OK
T16	H2	T16		1 OK
T17	A3	T17		3 OK
T18	B3	T18		2 OK
T19	C3	T19		2 OK
T2	B1	T2		5 OK

The 'Function Arguments' dialog box for the MID function is shown with the following values:

- Text: C22
- Start_num: 2
- Num_chars: 2

The formula result is 1.

- Highlight the cells in the column containing the number 1 just generated which are next to the "T" values under the Well Label. Press Ctrl + D to fill down the formula converting the "T" labeled columns to just numbers.

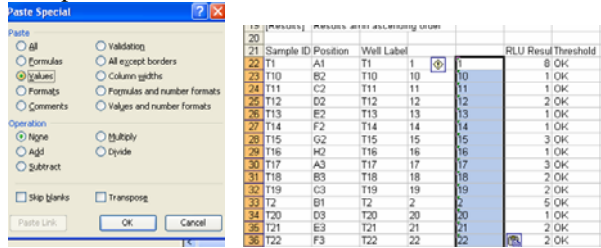
The screenshot shows the result of the Ctrl + D operation. The column containing the number 1 is now filled with the corresponding sample IDs (T1, T10, T11, etc.) from the Well Label column.

3M Microbiology Technical Bulletin

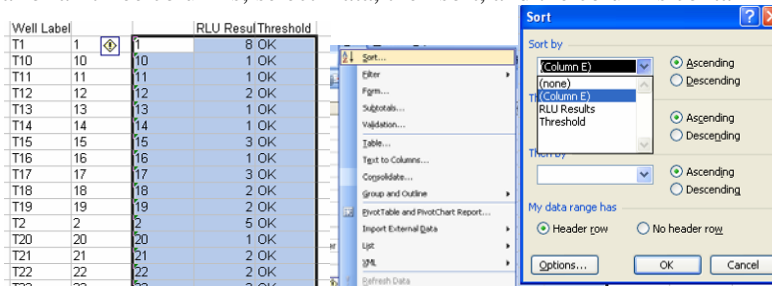
12. Select Edit, Paste Special.

	Sample ID	Position	Well Label		RLU Result	Threshold
22	T1	A1	T1	1	8	OK
23	T10	B2	T10	10	1	OK
24	T11	C2	T11	11	1	OK
25	T12	D2	T12	12	2	OK
26	T13	E2	T13	13	1	OK
27	T14	F2	T14	14	1	OK
28	T15	G2	T15	15	3	OK
29	T16	H2	T16	16	1	OK

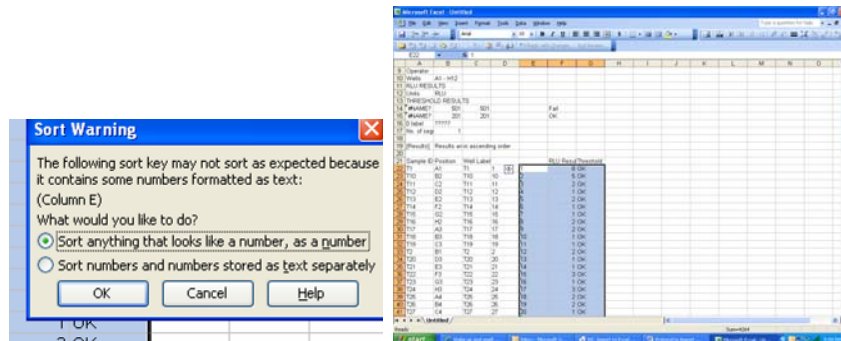
Select Values from the Paste Special menu and then OK.



13. Highlight the data for all three columns; select Data, then sort, and the columns containing the numbers just pasted.



Select “treat anything that looks like a number as a number”. This will sort the data by true well number in ascending order.





3M Microbiology
Technical Bulletin

Trademarks

3M is a trademark of 3M company and is used under license in Canada.

Windows and Excel are registered trademarks of Microsoft Corporation in the United States and/or other countries.

Revelation is a trademark of DYNEX TECHNOLOGIES INC. in the United States and/or other countries.

The screen images in this software documentation may depict obsolete, previously-used brand names, and trademarks. 3M will continue to update this documentation with currently-used brand names and trademarks.

©3M 2008. All rights reserved.