

Preventive Care Solutions

Clinpro™

Comfortable Oral Care



The healthy
smile concept

Clinpro™ Prophy Powder
Clinpro™ Prophy Paste

3M ESPE

- Systematic prophylaxis with a complete product program
- At the leading edge of scientific progress
- Pleasant-tasting
- Easy to use
- The right product for every phase of treatment

A well-thought-out, comprehensive system for prevention.

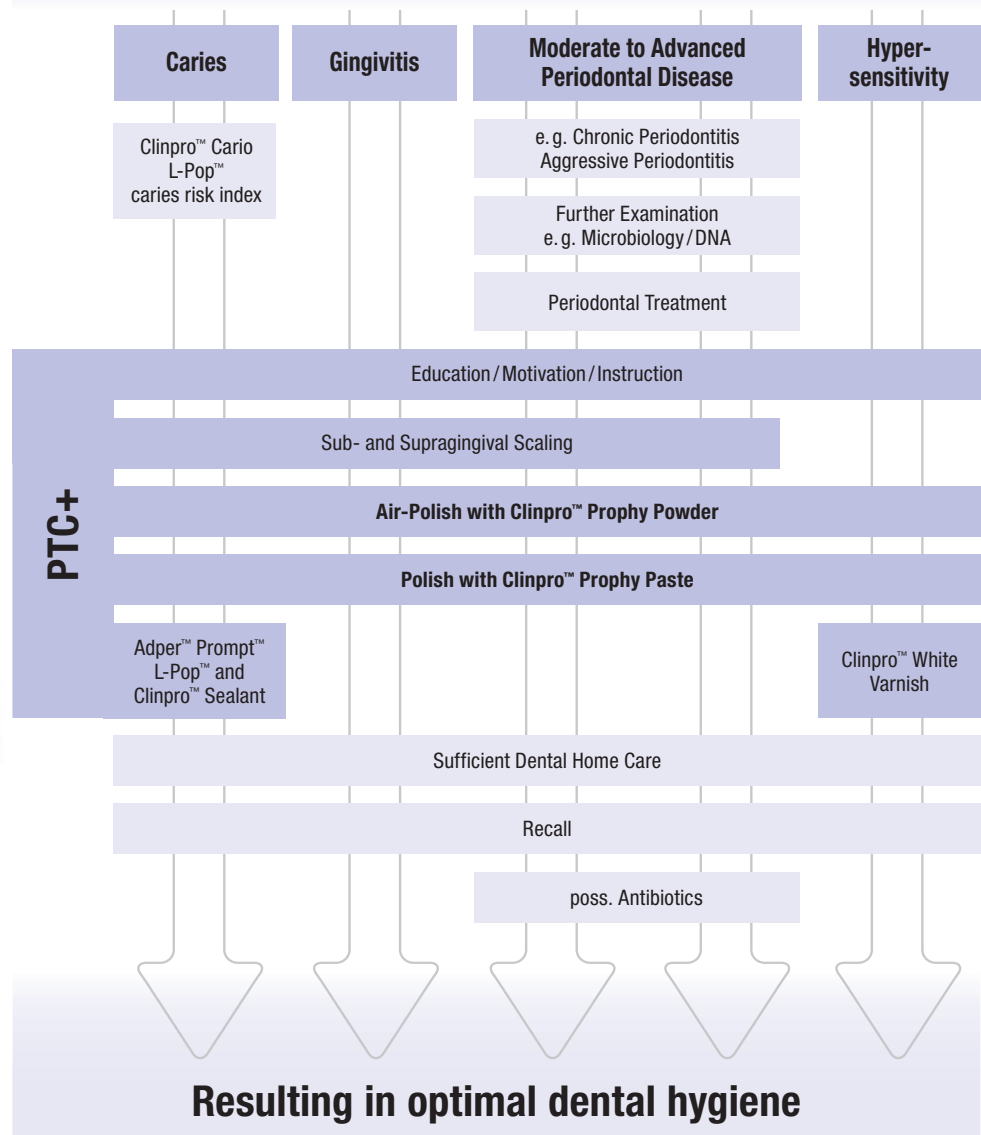
You + 3M ESPE =
New ideas for dentistry

Comfortable Oral Care is an initiative that systematically meets you and your patients halfway when it comes to preventive dentistry. Under the **Clinpro™** name, **3M ESPE** has developed a product program which combines professional tooth cleaning (**PTC**) and oral care into one. These products, which are based on the latest scientific research, are easy and pleasant to use, and provide reliable protection for teeth and gums. **Another plus: they taste good!**

PTC+: Your program for effective prevention.

Professional tooth cleaning must be adapted to the individual context and depends on each patient's oral situation. No matter what specific measures you may take, 3M ESPE's Clinpro series offers the right products for a pleasant, easy and unproblematic prophylactic treatment.

Dental Examination and Diagnosis



Clinpro™ Prophy Powder: for sub- and supragingival use.

For safe, effective plaque removal.

Clinpro Prophy Powder represents a unique innovation in air-polish technology and periodontal treatment. It is more comfortable than manual procedures, allows even subgingival plaque to be removed safely and, because of its minimal abrasiveness, it is gentle to the tooth enamel, dental restorative materials (such as gold and other metal and composites) and the soft root surfaces, preventing any loss of substance. In addition, Clinpro Prophy Powder removes pathogenic bacteria in the periodontal pockets more effectively than conventional plaque removal procedure.

Plaque on the sub- and supragingival tooth surfaces is mechanically removed with Clinpro Prophy Powder – either in routine professional tooth cleaning or in addition to subgingival scaling during initial periodontal treatment. Light to moderate extrinsic stains (for example, from tobacco, red wine, etc.) can also be safely and easily removed with Clinpro Prophy Powder.

- Safe removal of even subgingival plaque
- Unique innovation
- Optimal comfort during use
- Effective bacterial reduction in the periodontal pockets
- Easy and safe removal of extrinsic stains



Clinpro™ Prophy Powder removes plaque even in deeper pockets.

Clinpro Prophy Powder can also be used during supportive periodontal therapy, the Recall. To keep the periodontal area healthy, professional tooth cleaning is – depending on dental health – recommended every three to six months. Clinpro Prophy Powder cleans so gently that it can easily be used this frequently, unlike traditional powders. For that reason, it is also an excellent choice for PTC in patients who wear braces.

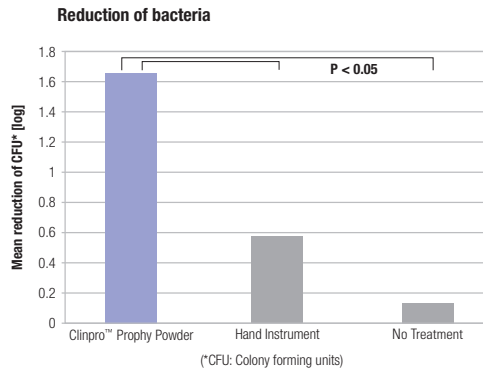


- Significantly better bacterial reduction
- Decrease in pocket depth comparable to manual procedures
- High patient satisfaction with comfort and taste
- Strong motivation for regular prophylaxis

The clinical results: overall superiority.

Reduction of bacteria

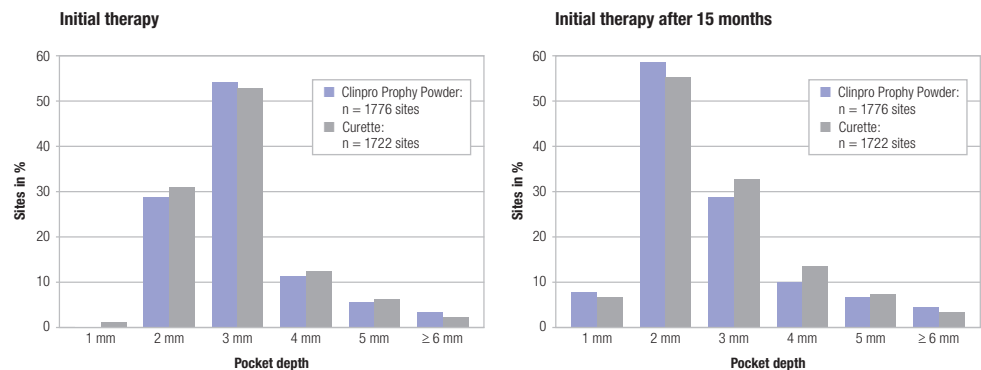
The air-polish process with Clinpro™ Prophy Powder results in significantly better bacterial reduction than manual plaque removal.



Petersilka G., Tunkel J., Barakos K., Heinecke A., Häberlein I., Flemmig T.F.: Subgingival plaque removal at interdental sites using a low abrasive air-polishing powder, Journal of Periodontology, 2003, Volume 74, Number 3

Reduction of pocket depth

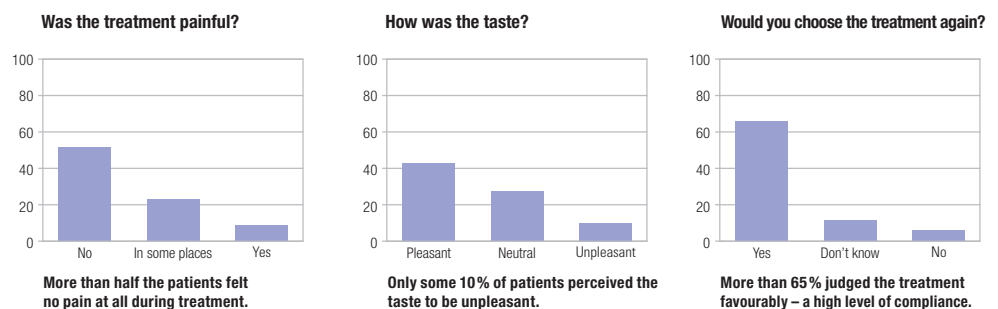
The decrease in pocket depth with Clinpro Prophy Powder is comparable to that of conventional treatment methods. And the Clinpro™ air-polish method has its advantages: it is faster, more pleasant for the patient and abrades the root surfaces less.



Petersilka G., Tunkel J., Barakos K., Heinecke A., Häberlein I., Flemmig T.F.: Subgingival plaque removal at interdental sites using a low abrasive air-polishing powder, Journal of Periodontology, 2003, Volume 74, Number 3

Patient comfort and satisfaction

An evaluation of the acceptance of Clinpro Prophy Powder in five dental practices with a total of 81 patients was convincing.



Less abrasion – more substance retention.

For protective tooth cleaning

Compared to conventional sodium/calcium bicarbonate powder, Clinpro™ Prophy Powder has been shown to abrade enamel and dentine surfaces significantly less. Plaque is safely removed without loss of substance, even from root surfaces. Because of this low level of abrasiveness, Clinpro Prophy Powder can be used more than twice a year – which is contraindicated with other air-polishing powders.

Conventional	Low-abrasive (Clinpro™ Prophy Powder)
Subgingival usage: ---	Subgingival usage: +++
Plaque removal: +++	Plaque removal: +++
Stain removal: +++	Stain removal: ++
Use on enamel: ++	Use on enamel: +++
Use on dentine: ---	Use on dentine: +++
Use on root surface: ---	Use on root surface: +++

- Minimal abrasion of enamel and dentine surfaces
- No clinically relevant substance loss from the root surfaces
- Can be used more than twice a year
- Significantly shorter treatment time compared to manual procedures



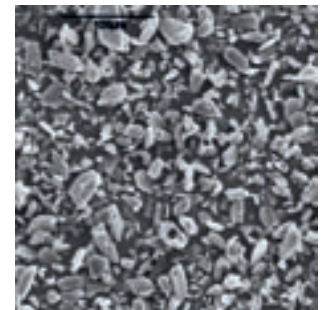
Conventional air-polishing powders

- up to 200 µm particle size
- should only be applied once, maximally twice, per year due to abrasivity

This is how Clinpro™ Prophy Powder is used.

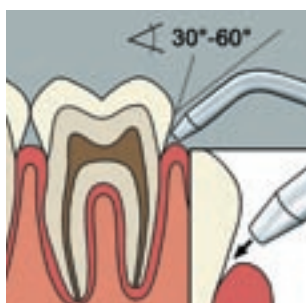
Comfortable, safe, fast – and tastes good as well.

Plaque removal with Clinpro Prophy Powder is not only more effective than manual procedures, it's also faster. Patients also appreciate the exceptionally pleasant taste. The figures show the process in detail: compared to traditional cleaning with a curette, you require only one quarter of the time to achieve better results with greater comfort. Moreover, Clinpro Prophy Powder is ideal for cleaning tooth surfaces fast and effectively, even in the immediate vicinity of orthodontic appliances.

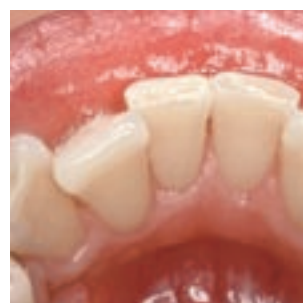


Clinpro™ Prophy Powder (NEW!)

- mean particle size < 45 µm
- can be applied as many times per year as needed



Positioning of the nozzle 5 mm from the gingiva at 30° to 60°.



Before and after air-polish with Clinpro™ Prophy Powder. This method is four times faster than the conventional method using currettes and is easier as well.

Two products with outstanding properties.

Clinpro™ Prophy Powder

Benefits for the dentist and dental hygienist.

Clinpro Prophy Powder makes professional tooth cleaning much faster, easier and more effective.

- Can be used for removal of **sub- and supragingival plaque and stains during routine professional tooth cleaning, initial periodontal treatments and in periodontal maintenance, the Recall.**
- **Less damaging to enamel and dentine tooth surfaces than conventional sodium/calcium bicarbonate powders.**
- Very low abrasivity, and can therefore be used more than twice a year (other air-polishing powders are contraindicated).
- **More efficient at lowering bacterial loads in periodontal pockets than conventional instruments.**
- Four times faster than conventional instruments.
- Less technically demanding than conventional cures (better ergonomics).
- **Reputation for providing patients with innovative, improved treatments.**
- Improves patient compliance for recall visits.

Benefits for the patient.

With Clinpro™ Prophy Powder, plaque removal ceases to be a necessary evil, now it's a comfortable and pleasant-tasting procedure.

- **Safely removes plaque from (root) surfaces without causing clinically relevant loss of (root) substance.**
- Can be used safely with orthodontic appliances without damaging them.
- **Quick treatment.**
- Four times faster than conventional instruments.
- **More efficient at lowering bacterial loads in periodontal pockets than conventional instruments.**
- **Less painful and thus better accepted by patients.**
- Pleasant-tasting – does not leave a salty, gritty taste in the patient's mouth.
- More comfortable and gentle than the conventional method using cures.





Clinpro™ Prophy Paste

This polishing paste is designed for use with Clinpro™ Prophy Powder in clinical practice and enhances extrinsic stain removal effect.

Clinpro Prophy Powder is a mild abrasive that may not remove heavy extrinsic stains (caused by heavy smoking, coffee, tea etc.). For heavy staining, the Clinpro product line offers Clinpro Prophy Paste, a complementary product for the in-office cleaning procedure.

Clinpro Prophy Paste contains pumice and is available in three different grits – fine, medium and coarse – thus the dental hygienist can select the right grit for optimal cleaning and abrasion in every situation. In addition, Clinpro Prophy Paste releases fluoride to help strengthen teeth and reduce sensitivity. And like Clinpro Prophy Powder, the Clinpro Prophy Paste tastes great.

- Specially formulated paste to minimize **splattering** during polishing.
- Clinpro Prophy Powder can be combined with Clinpro Prophy Paste to remove persistent extrinsic stains.
- Releases fluoride during polishing procedure.
- **3 different grits: fine, medium and coarse for the right choice in abrasion management.**
- 2 flavors: mint and cherry.
- **Unit dose package** is aseptic and easy to use.



Ordering Information



Clinpro™ Propy Powder

Item No.	Product Information
67001	Clinpro™ Propy Powder 4 Bottles à 100 g



Clinpro™ Propy Paste

12613	Clinpro™ Propy Paste 200 à 2 g Cherry Fine
12657	Clinpro™ Propy Paste 200 à 2 g Mint Medium
12658	Clinpro™ Propy Paste 200 à 2 g Mint Coarse

3M ESPE

3M ESPE AG
ESPE Platz
82229 Seefeld · Germany
E-Mail: info3mespe@mmm.com
Internet: www.3mespe.com

You + 3M ESPE =
New ideas for dentistry

3M, ESPE, Adper, Clinpro, L-Pop
and Prompt are trademarks of
3M or 3M ESPE AG.

© 3M 2008. All rights reserved.
01 (7.2008)