

Protemp™ Plus

Temporization Material



Highest fracture resistance
Gloss without polishing

Record-breaking toughness means a stronger temporary with long-term durability

With 40 years of experience in temporization, 3M ESPE has set another milestone in product innovation. We've applied our expertise in nanotechnology to create the first bis-acrylic composite with a new generation of fillers. The result is unparalleled strength and esthetics.

Record-breaking toughness means a stronger temporary with long-term durability.

Patients constantly put their temporaries to the test. Using Protemp™ Plus Temporization Material can help reduce unplanned visits from patients with fractured temporaries.

- Highest fracture resistance of all materials
- Outstanding mechanical and compressive strength
- **Proven less likely to break** than leading automix bis-acrylic temporization materials

In vitro tests prove Protemp Plus material is tougher than all temporary materials on the market — making it also suitable for long-term temporization.

Summary of advantages

- Record-breaking fracture resistance and toughness
- Quick intraoral set; total set time of 5 minutes
- Sophisticated filler technology provides strength and esthetics
- Easy plaque removal to support gingival health
- Five natural-looking shades designed to match Filtek™ Supreme Ultra Flowable Restoratives

What Dentists are Saying:

“Best temp material I have used to date.” — Thomas Lenz, DDS

“Easy to use, strong and natural looking.” — Daniela Sever, DMD, PC

“The new material from 3M ESPE will help you make excellent provisionals, in a short time, that will be comfortable for your patients, promote gingival health and look natural.”

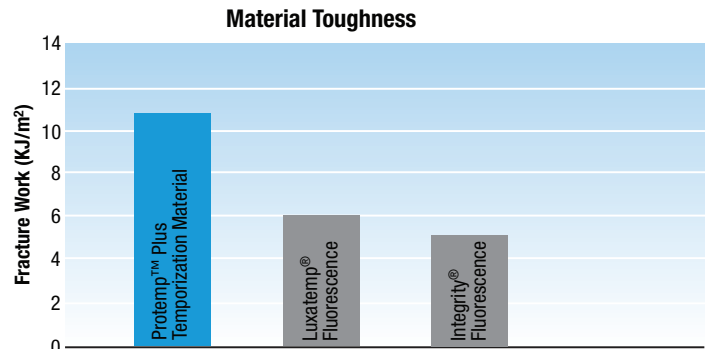
— Steve Carstensen, DDS, FAGD, FICD

“Great looking provisionals that hold up great under tough conditions.”

— Christopher Bailey, DDS

“Very nice finish with less effort; strong and natural looking.”

— Frank D. Letizia, DDS

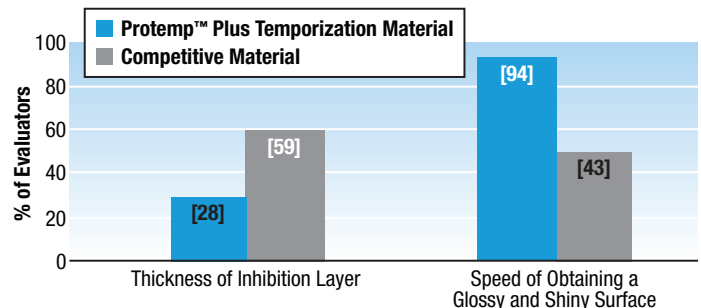


In a test measuring material toughness, Protemp™ Plus Temporization Material showed greater resistance to fracture than other temporization materials. Source: V. Babacic, R. Perry and G. Kugel, Tufts University, Boston, MA, U.S.A., AADR 2008, #0371

In the 3M ESPE field evaluation of Protemp Plus Temporization Material, dentists reported fewer unscheduled office visits due to fractured temporaries.

Dentists find less oxygen inhibition layer – which means easy handling, and less time and effort.

In a 3M ESPE field test, dentists found Protemp Plus material to have a much thinner inhibition layer than other bis-acrylic materials. That means less time is required to remove it – and no more messy or sticky procedure.



More Evaluators prefer the thinner inhibition layer of Protemp™ Plus compared to competitive materials. Ratings for thinness of inhibition layer and speed of obtaining a glossy and shiny surface of Protemp™ Plus Temporization Material and competitive temporary materials currently used by evaluators. (Top 2 box results on a 5 scale from “excellent” to “very poor” from the 3M ESPE Protemp™ Plus Temporization Material field evaluation 2008)

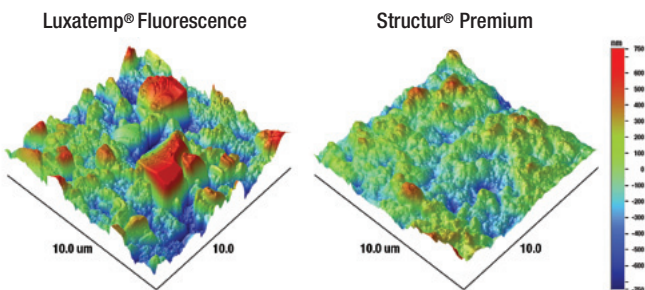
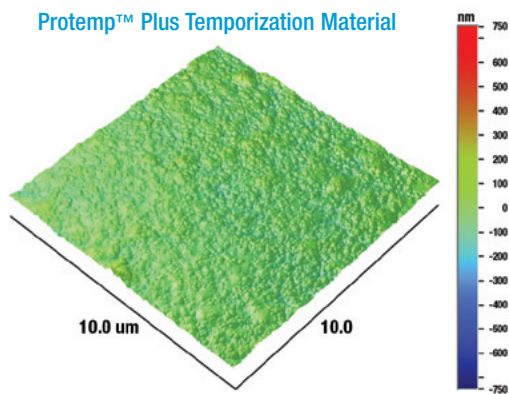
A faster procedure and brilliant results without polishing or glazing

Minimum preparation with maximum results.

Because Protemp Plus Temporization Material is enhanced with 3M ESPE's unique nanotechnology, the surface is smooth from the beginning. Now, all that dentists or dental assistants need to do to achieve an immediate high gloss is clean the temporary with alcohol. It's truly that easy.

Dentists find Protemp Plus material convenient and easy to use — and patients enjoy the natural-looking polish and smooth feel.

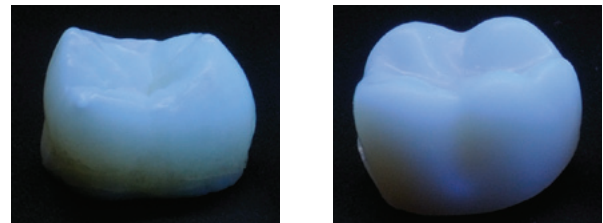
Sophisticated filler technology sets the benchmark in surface quality.



Surface topology of Protemp™ Plus and other temporization materials after removing the inhibition layer with alcohol and no further polishing.
Source: 3M ESPE internal data – Atomic Force Microscopy (AFM) images by 3M Corporate Research Analytical Laboratory – (CRAL)

Natural-looking fluorescence adds to the outstanding esthetics.

The fluorescent pigments of Protemp Plus material result in temporaries that look naturally beautiful in various lighting conditions — even challenging UV light.



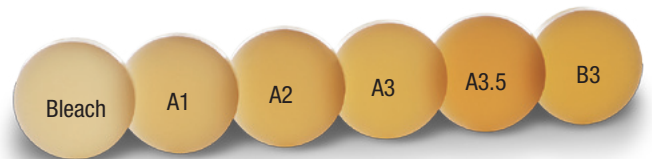
Human Tooth

Protemp™ Plus Temporization Material

Comparing the fluorescence of temporization materials under ultraviolet light shows Protemp™ Plus Temporization Material looks almost the same as natural teeth.
Source: 3M ESPE internal data

Shades match Filtek™ Supreme Ultra Flowable Restoratives.

Six popular shades (A1, A2, A3, A3.5, B3, Bleach) match beautifully with Filtek™ Supreme Ultra Flowable Restorative.



Better color stability — even over the long term.

Thanks to an improved surface quality, Protemp Plus material holds color better than other materials — a benefit that's especially important for long-term indications.

| | Before | After |
|--------------------------------------|--------|-------|
| Protemp™ Plus Temporization Material | | |
| Luxatemp® Fluorescence | | |
| Integrity® Fluorescence | | |
| Structur® Premium | | |

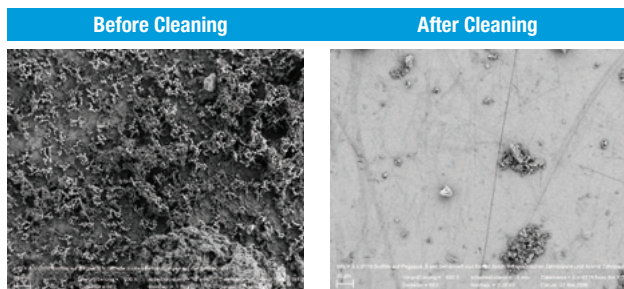
Coffee test: After three days immersed in coffee at 36 degrees Celsius, Protemp™ Plus Temporization Material shows virtually no color change.
Source: 3M ESPE internal data

EXTRA STRONG

Protemp™ Plus Temporization Material

The naturally-smooth surface is easy to clean, supporting gingival health and greater patient satisfaction.

Due to the smooth, glossy surface of Protemp™ Plus Temporization Material, plaque can be easily cleaned away. The result is improved oral hygiene during the wear time of temporary restorations, and a higher wearing comfort for patients.



The SEM photos of Protemp™ Plus Temporization Material above (500 fold magnification) demonstrate the dramatic surface improvement after cleaning. The “before cleaning” image shows normal plaque accumulation. The “after cleaning” image shows only residual tooth paste abrasive particles.
Source: 3M ESPE internal data

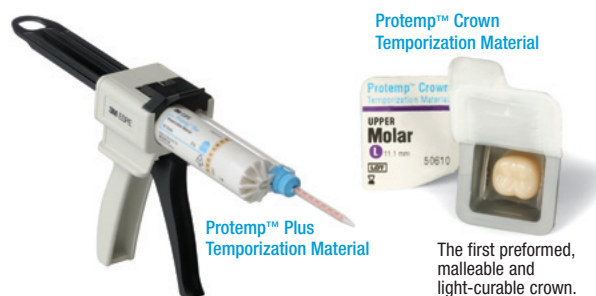
Indications:

For single and multiple unit temporaries

- Crowns
- Bridges
- Inlays and onlays
- Veneers
- Also indicated for long-term temporization

Protemp™ Temporization System ... Innovative solutions for your temporary needs.

Protemp Plus Temporization Material and Protemp™ Crown Temporization Material offer dentists the newest technology in the temporization market. These innovative solutions let dentists achieve maximum results with a minimum of preparation steps.



Ordering Information



| Item # | Product Information |
|---------|--|
| 46962 | Protemp™ Plus Temporization Material Intro Kit – A2 Kit includes: 1 cartridge – 50ml, A2; 16 cartridge mixing tips, blue; 1 cartridge dispenser; 1 RelyX™ Temp NE Cement; 1 syringe Filtek™ Supreme Plus Flowable A2 with mixing tips and information for use; Technique Card; Instructions |
| 46964 | Protemp™ Plus Temporization Material Refill – Bleach Includes: 1 cartridge – 50ml, Bleach; 16 cartridge mixing tips, blue; Instructions |
| 46955 | Protemp™ Plus Temporization Material Refill – A1 Includes: 1 cartridge – 50ml, A1; 16 cartridge mixing tips, blue; Instructions |
| 46963 | Protemp™ Plus Temporization Material Refill – A2 Includes: 1 cartridge – 50ml, A2; 16 cartridge mixing tips, blue; Instructions |
| 46958 | Protemp™ Plus Temporization Material Refill – A3 Includes: 1 cartridge – 50ml, A3; 16 cartridge mixing tips, blue; Instructions |
| 46973 | Protemp™ Plus Temporization Material Refill – A3.5 Includes: 1 cartridge – 50ml, A3; 16 cartridge mixing tips, blue; Instructions |
| 46961 | Protemp™ Plus Temporization Material Refill – B3 Includes: 1 cartridge – 50ml, B3; 16 cartridge mixing tips, blue; Instructions |
| 50600TK | Protemp™ Crown Temporization Material Trial Kit Kit includes: 16 temporary crowns; Crown size tools – 1 bag of 10; Instructions; Technique guide; CD 16 Protemp Crowns: 3 Upper Molars large, 3 Upper Molars small, 2 Lower Molars large, 2 Lower Molars small 2 Upper Bicuspid (Premolar) large, 2 Upper Bicuspid (Premolar) small, 2 Lower Bicuspid (Premolar) |

Customer Care Center: 1-800-634-2249 www.3MESPE.com/ProtempPlus

3M ESPE

Dental Products

3M Center
Building 275-2SE-03
St. Paul, MN 55144-1000
U.S.A.
1-800-634-2249

3M Canada

Post Office Box 5757
London, Ontario N6A 4T1
Canada
1-888-363-3685

Please recycle. Printed in U.S.A.
© 3M 2011. All rights reserved.
70-2013-0120-0