

3M™ LifeASSURE™ BNA045 and BNA065 Series

Filter Cartridges for Beverage Microbiological Stability

Filter Cartridges for Beverage Microbiological Stability

Controlling the spoilage microorganism population prior to bottling is critical for many beverage processors. Eliminating these microorganisms, while keeping other beverage properties unchanged, is of vital importance. Of equal importance, however, is attaining long on-stream filter service life and driving down operating costs associated with filtration. 3M has solved this demanding problem with the creation of the 3M™ LifeASSURE™ BNA Series Filter Cartridges. LifeASSURE BNA series filters encompass leading-edge technologies that not only provide the highest degree of microorganism control, but do so in a long-lasting design.

LifeASSURE BNA series filter cartridges employ a highly-asymmetric polyether sulfone (PES) membrane that delivers excellent spoilage microorganism retention while greatly minimizing any organoleptic interference. This durable membrane/cartridge design withstands repeated exposure to hot water sanitation and steam sterilization as well as common chemical cleaning and sanitizing agents.

Complementing this high-performance membrane are 3M Advanced Pleat Technology (APT) design and an upstream and downstream support design. All three work in concert to provide an increased flow rate at a lower pressure drop, resulting in smaller filter cartridge assemblies with extended service life and a lower overall operational costs.



Features & Benefits

Highly asymmetric PES membrane

- Longer service life than competitive filter cartridges
- Lower operating costs than competitive filter cartridges

High spoilage organism retention

- Reliable microbiological control
- Performance matched to industry standards

Advanced Pleat Technology (APT)

- Increased accessible surface area
- Longer service life than competitive filter cartridges
- Lower operating costs than competitive filter cartridges

Upstream/downstream supports

- Increased flow per cartridge
- Reduced housing costs

Broad chemical compatibility

- Stable with most cleaning and sanitation regimes

Food contact compliance

- Designated filtration products comply with US regulations for food and beverage use
- The product is compliant with the requirements of Regulations (EC) 1935/2004 (EU) 10/2011, and (EC) 2023/2006 for food contact for use in aqueous, acidic, alcoholic and dairy products
- Consult 3M for detailed regulatory compliance information

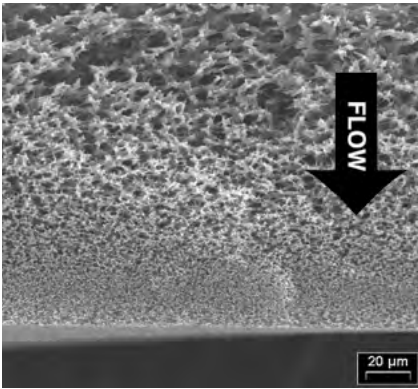


Figure 1. SEM of LifeASSURE BNA series filter cartridge

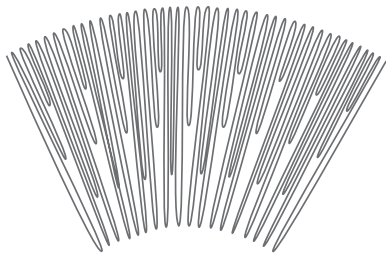


Figure 2. Advanced Pleat Technology

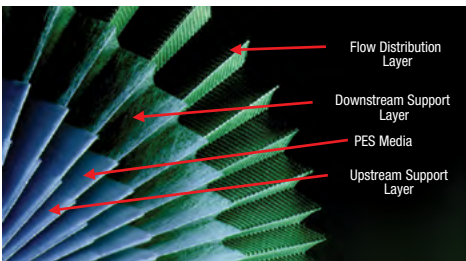


Figure 3. LifeASSURE BNA series filter cartridge support design

Advanced Technologies

Highly Asymmetric PES Membrane

LifeASSURE BNA series filter cartridges incorporate a novel PES membrane with a high degree of asymmetry (Figure 1). When viewed in cross-section, the membrane contains larger pores on the upstream surface that gradually taper to smaller pores towards the downstream surface. Compared to conventional membranes with a symmetric pore structure, this structure provides greater contaminant capacity, since it presents greater open spaces (void volume) in which to retain these contaminants. This increase in capacity extends the filter’s service life. In addition, the asymmetric structure provides less resistance to flow, resulting in a lower pressure drop when compared at a constant flow rate to competitive filter cartridges, allowing a user to employ fewer LifeASSURE BNA series filter cartridges for any given flow rate.

Advanced Pleat Technology (APT)

LifeASSURE BNA series filter cartridges feature Advanced Pleat Technology (APT) design for extended service life. This design technology maximizes the useful surface area of the filter cartridge while maintaining open flow paths between the media pleats (refer to Figure 2). By employing the APT design, the LifeASSURE BNA series filter cartridge provides lower pressure drops, longer service life, and lower overall operational costs than competitive filter cartridges.

Novel Upstream/Downstream Support Design

LifeASSURE BNA series filter cartridges employ a design that results in higher beverage flow versus pressure drop compared to competitive filter cartridges. This unique 3M development combines the high flowing PES membrane with special support layers upstream and downstream of the membrane. When combined with the previously mentioned Advanced Pleat Technology, this feature greatly increases flow per filter cartridge, and results in lower overall operational costs than competitive filter cartridges.

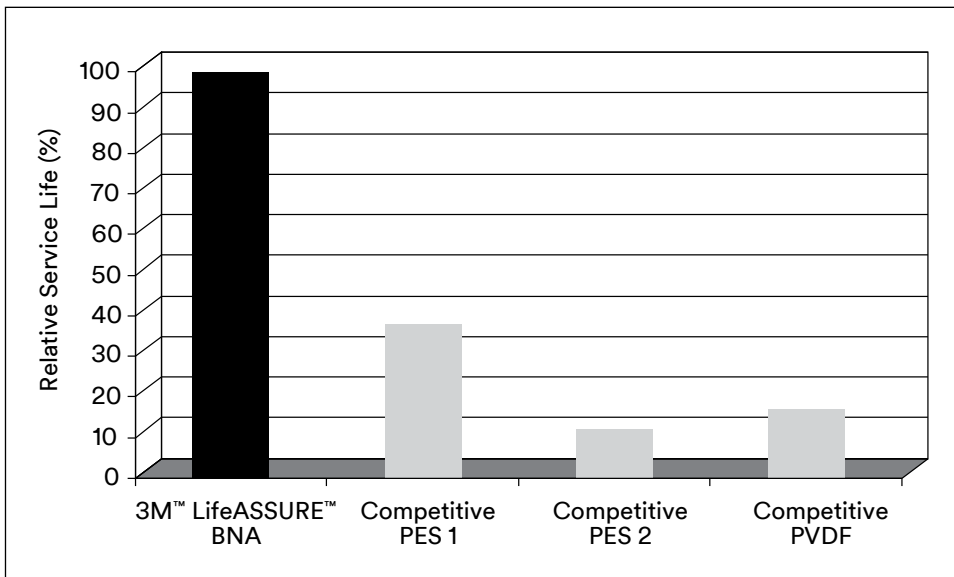
Advanced Performance

Extended Service Life

In the majority of beverage applications, the final membrane filter cartridge is used in a continuous (as opposed to a batch) operation. Its service life is measured either by the volume filtered, or the number of days in service, before becoming permanently blocked. Filter cartridges that provide longer service life not only reduce direct operational costs, but also reduce indirect filter cartridge costs as well (filter cartridge change-out/installation labor, downtime between change-outs, filter cartridge flushing, etc.). The LifeASSURE BNA series filter cartridge’s unique combination of highly asymmetric PES membrane, Advanced Pleat Technology design, and novel upstream/downstream support design, all work together to maximize the volume of beverage that can be processed. Chart 1 depicts the service life performance of the LifeASSURE BNA series filter cartridge compared to various competitive filter cartridges. A surrogate solution was employed to mimic beverage plugging characteristics at an increased rate.

As the chart demonstrates, the LifeASSURE BNA series filter cartridge’s unique design provided more than twice the throughput of the nearest competitor, greatly reducing overall filtration costs.

Chart 1. Comparative Filter Service Life



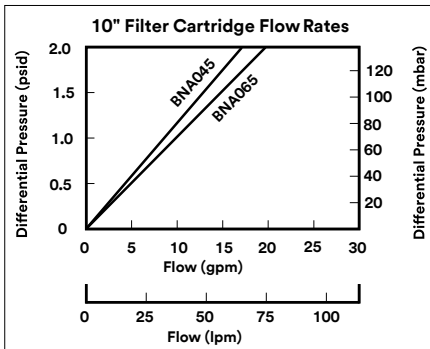
Reliable Microbiological Control

The primary purpose of a membrane filter cartridge in beverage processing is to effectively control spoilage microorganisms. 3M™ LifeASSURE™ BNA 0.45 micron and 0.65 micron rated filter cartridges provide superior retention of common spoilage microorganisms, even at challenge concentrations that far exceed those experienced by most beverage producers (typically 1,000,000 to 10,000,000 cells per cm² of membrane area).

3M™ LifeASSURE™ BNA	Microorganism	Typical Log Reduction Value (LRV)
BNA045	<i>Serratia marcescens</i>	8
BNA045	<i>Oenococcus oeni</i>	9
BNA045	<i>Lactobacillus brevis</i>	10
BNA045	<i>Dekkera intermedia</i>	9
BNA065	<i>Lactobacillus brevis</i>	7
BNA065	<i>Dekkera intermedia</i>	9

Log Reduction Values are calculated using the following formula:

$$LRV = \log_{10} \left(\frac{\text{total number of organisms entering the filter cartridge}}{\text{total number of organisms exiting the filter cartridge}} \right)$$



Fast Flow Rates at Low Pressure Drops

3M has combined three key technological advances to provide the fastest flow rate per unit of pressure drop. These three technologies, a highly asymmetric microporous membrane, Advanced Pleat Technology (APT) design, and an upstream and downstream support design, afford users with faster process flow rates using fewer filter cartridges.

Initial Clean Pressure Drop (water) for a 30" Filter Flowing at 20 gpm (76 lpm)

LifeASSURE BNA045	0.75 psid (52 mbar)
Competitor 1	1.92 psid (132 mbar)
Competitor 2	7.5 psid (517 mbar)
Competitor 3	2.5 psid (172 mbar)

*Data from published product literature.

As the example illustrates, LifeASSURE BNA series filter cartridges have a considerably lower pressure drop at a given flow rate when compared to competitive filter cartridges. Since filter cartridge change-out is usually tied to a terminal differential pressure drop (typically between 20-35 psid [1,378-2,413 mbar]), employing filter cartridges that exhibit a lower initial pressure drop can result in longer filter cartridge service life.

Alternatively, when determining the number of filter cartridges needed in a new system to provide a desired flow rate at a given pressure drop, faster flowing filter cartridges will result in smaller, more economical systems.

Consider the following example:

Number of 10" Filter Cartridges Needed to Provide a 20 gpm Flow With a Clean Pressure Drop of 1 psid (76 lpm flow at 69 mbar)	
LifeASSURE BNA045	2
Competitor 1	5
Competitor 2	24
Competitor 3	5

*Rounded to the nearest 10" filter cartridge length.

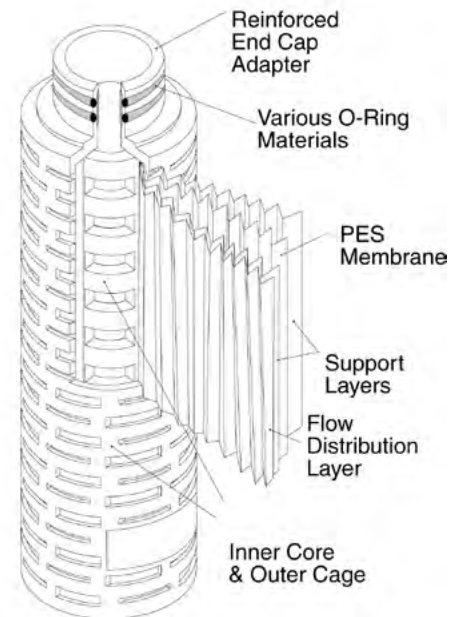
As the example illustrates, the nearest competitor requires more twice as many filter cartridge elements to provide the same flow rate and pressure drop.

Durable Design

The LifeASSURE BNA series filter membrane and filter cartridge design innovations result in a durable filter cartridge, capable of secure operation through numerous cycles of hot water sanitation, steam sterilization, and chemical based cleaning and sanitation.

3M™ LifeASSURE™ BNA Filter Cartridge Construction

LifeASSURE BNA series filter cartridges are constructed of single-layer, highly asymmetric, polyethersulfone (PES) microporous membrane pleated with polypropylene upstream and downstream support materials. The outer cage, inner core and reinforced end-cap adapters are made of polypropylene. Multiple length filter cartridges, with industry standard connection styles, are produced to fit the most widely used housing designs and system sizes. No resin or binder compounds are added. All materials used in manufacturing are traceable and are approved for indirect food contact. Filter cartridges are manufactured under an ISO 9001:2008 certified quality system using the most advanced thermoplastic welding techniques for filter cartridge integrity. LifeASSURE BNA series filter cartridges are 100% integrity tested after manufacture to verify quality.



Materials of Construction	
Membrane	Polyethersulfone
Support Layers	Polypropylene
Inner Core, Outer Cage, End Caps	Polypropylene
End Cap Adapter	Polypropylene with polysulfone or stainless steel reinforcing ring
O-rings	Various

Nominal Filter Cartridge Dimensions	
Effective Filtration Area (EFA)	8.5 ft ² (0.79 m ²)
Filter Cartridge Diameter	2.75" (70 mm)
Filter Cartridge Lengths	10" (254 mm), 20" (508 mm), 30" (762 mm), 40" (1016 mm)

Operating Parameters	
Recommended Flow Rate (10" element)	Wine: 2 – 3 gpm (7.6 – 11. lpm) Maximum: 9 gpm per psid (34 lpm per 68.9 mbar)
Max. Differential Pressure (Forward)	80 psid @ 77°F (5.5 bar @ 25°C) 35 psid @ 194°F (2.4 bar @ 90°C)
Max. Differential Pressure (Reverse)	50 psid @ 77°F (3.44 bar @ 25°C)
Max. Hot Water Sanitation Temperature	194°F (90°C) – 150, 30 minute cycles
Max. Steam Sterilization Temperature	275°F (135°C) – 75, 30 minute cycles
NaOH cleaning duration (conc. 1M @ 65°C)	100 hours
Peracetic acid sanitation (conc. 1 % @ 21°C)	100 hours

	BNA045 (0.45 µm)	BNA 065 (0.65 µm)
Forward Flow Test Pressure	22 psi (1.5 bar)	15 psi (1 bar)
Max. Diffusion (10" element)	≤35 cc/min	≤25 cc/min
Minimum Bubble Point	≥24 psi (1.7 bar)	≥17 psi (1.2 bar)
Pressure Hold Test	Consult 3M Purification Inc.	Consult 3M Purification Inc.

Integrity Testing Parameters

The Integrity Test is a non-destructive test that can be performed by the user to make sure the filter cartridge is installed correctly and ready for operation. LifeASSURE BNA series filter cartridges can be Integrity Tested either manually, or with an automated integrity tester, by one of three methods: the Forward Flow Test, the Bubble Point Test, or the Pressure Hold Test.

Prefiltration Selections

Many bottling applications employ a prefilter and final filter cartridge in series to achieve maximum performance and economy. Prefilter cartridges are used to help protect and extend the life of more expensive final filter cartridges. 3M offers three premium prefilter cartridge choices: 3M™ Zeta Plus™ MH Series Depth Filter Cartridges, 3M™ Betafine™ XL Series Pleated Polypropylene Filters, and 3M™ LifeASSURE™ BLA Series Membrane Filter Cartridges. Zeta Plus MH series dual-zone filter cartridges have long been used in clarifying beverages in both cellar operation and in-line to the bottler. Customers preferring cylindrical prefilter cartridges can select from the LifeASSURE BLA series prefilter cartridge family. Containing a dual-zone membrane, LifeASSURE BLA series filter cartridges are designed to deliver excellent throughputs with high flow rates, while providing the ultimate in final membrane protection. Betafine XL series filters, containing pleated polypropylene microfiber, are a third prefilter option.

3M Purification Inc. Filter Cartridge Housings

A specialized range of filter cartridge housings is available to meet the needs of the food and beverage industry. The housings provide easy access for filter cartridge change-out and confidence that LifeASSURE BNA series filter cartridges are sealed securely to avoid the possibility of fluid bypass. All housings are constructed using 316L stainless steel to maximize corrosion resistance. 3M also offers custom-design, fully automated filtration skids and mobile units.

Application Engineering

3M has a global team of market-focused scientists and engineers who excel in supporting and collaborating with end-users. Our technical teams are skilled in either performing on-site bench-scale or in-house tests and relating results to full scale manufacturing operations and optimizing cost of purification. When unique processing problems are encountered, our product and application specialists are equipped to identify solutions using either 3M's broad array of existing products or potentially develop a custom solution for your application.

3M™ LifeASSURE™ BNA Series Filter Cartridge Ordering Guide

Cartridge Grade	Removal Rating (µm)	Configuration	Length (Inches)	End-modification	Gasket/O-ring Material	Adaptor Insert
BNA	045 – 0.45 065 – 0.65	F – APT Pleat	01 – 10 02 – 20 03 – 30 04 – 40	B – 226 O-ring & Spear (Code C7) C – 222 O-ring & Spear (Code 8) F – 222 O-ring & Spear (Code 3)	A – Silicone C* – EPR	1 - No Insert 2 – SS Insert

PLEASE NOTE: The Ordering Guide above is for reference only. Not all combinations are available. Please consult with your 3M Representative to determine the appropriate part number for your application.

**“C” O-Ring (EPR) option is not for use in EU Food Contact applications.

Intended Use: 3M™ LifeASSURE™ BNA Series Filter cartridges are intended for use in industrial filtration applications of aqueous fluids in accordance with the applicable product instructions and specifications. 3M LifeASSURE BNA Series Filter cartridges are also intended for use with non-aqueous fluids where materials of construction are compatible. Certain limited 3M LifeASSURE BNA 045 & 065 Series Filter Cartridges are also intended for use in food and beverage (F&B) applications. For details related to the specific use conditions or limitations for food contact applications please contact your 3M representative for more information. Since there are many factors that can affect a product’s use, the customer and user remain responsible for determining whether the 3M product is suitable and appropriate for the user’s specific application, including user conducting an appropriate risk assessment and evaluating the 3M product in user’s application.

Restrictions on Use: 3M advises against the use of these 3M products in any application other than the stated intended use(s), since other applications have not been evaluated by 3M and may result in an unsafe or unintended condition. Do not use in any manner whereby the 3M product, or any extractable or leachable from the 3M product, may become part of or remains in a medical device, drug, cosmetic, supplement, infant formula; or in applications involving life-sustaining medical applications or prolonged contact with internal bodily fluids or tissues.

Technical Information: The technical information, guidance, and other statements contained in this document or otherwise provided by 3M are based upon records, tests, or experience that 3M believes to be reliable, but the accuracy, completeness, and representative nature of such information is not guaranteed. Such information is intended for people with knowledge and technical skills sufficient to assess and apply their own informed judgment to the information. No license under any 3M or third party intellectual property rights is granted or implied with this information.

Product Selection and Use: Many factors beyond 3M’s control and uniquely within user’s knowledge and control can affect the use and performance of a 3M product in a particular application. As a result, customer is solely responsible for evaluating the product and determining whether it is appropriate and suitable for customer’s application, including conducting a workplace hazard assessment and reviewing all applicable regulations and standards (e.g., OSHA, ANSI, etc.). Failure to properly evaluate, select, and use a 3M product and appropriate safety products, or to meet all applicable safety regulations, may result in injury, sickness, death, and/or harm to property.

Warranty, Limited Remedy, and Disclaimer: Unless a different warranty is expressly stated on the applicable 3M product packaging or product literature (in which case such express warranty governs), 3M warrants that each 3M product meets the applicable 3M product specification at the time 3M ships the product. 3M MAKES NO OTHER WARRANTIES OR CONDITIONS, EXPRESS OR IMPLIED, INCLUDING, BUT NOT LIMITED TO, ANY IMPLIED WARRANTY OR CONDITION OF MERCHANTABILITY, FITNESS FOR A PARTICULAR PURPOSE, OR ARISING OUT OF A COURSE OF DEALING, CUSTOM, OR USAGE OF TRADE. If a 3M product does not conform to this warranty, then the sole and exclusive remedy is, at 3M’s option, replacement of the 3M product or refund of the purchase price.

Limitation of Liability: Except for the limited remedy stated above, and except to the extent prohibited by law, 3M will not be liable for any loss or damage arising from or related to the 3M product, whether direct, indirect, special, incidental, or consequential (including, but not limited to, lost profits or business opportunity), regardless of the legal or equitable theory asserted, including, but not limited to, warranty, contract, negligence, or strict liability.

Your local distributor:

3M Purification Inc.

3M Separation and Purification Sciences Division
400 Research Parkway
Meriden, CT 06450 USA

Phone 1-800-243-6894
1-203-237-5541
Web www.3M.com/purification

3M, Betafine, LifeASSURE and Zeta Plus are a trademarks of 3M Company. All other trademarks are the property of their respective owners.
©2024 3M Company. All rights reserved. Please recycle. Printed in U.S.A.
70020188788 REV 224hb