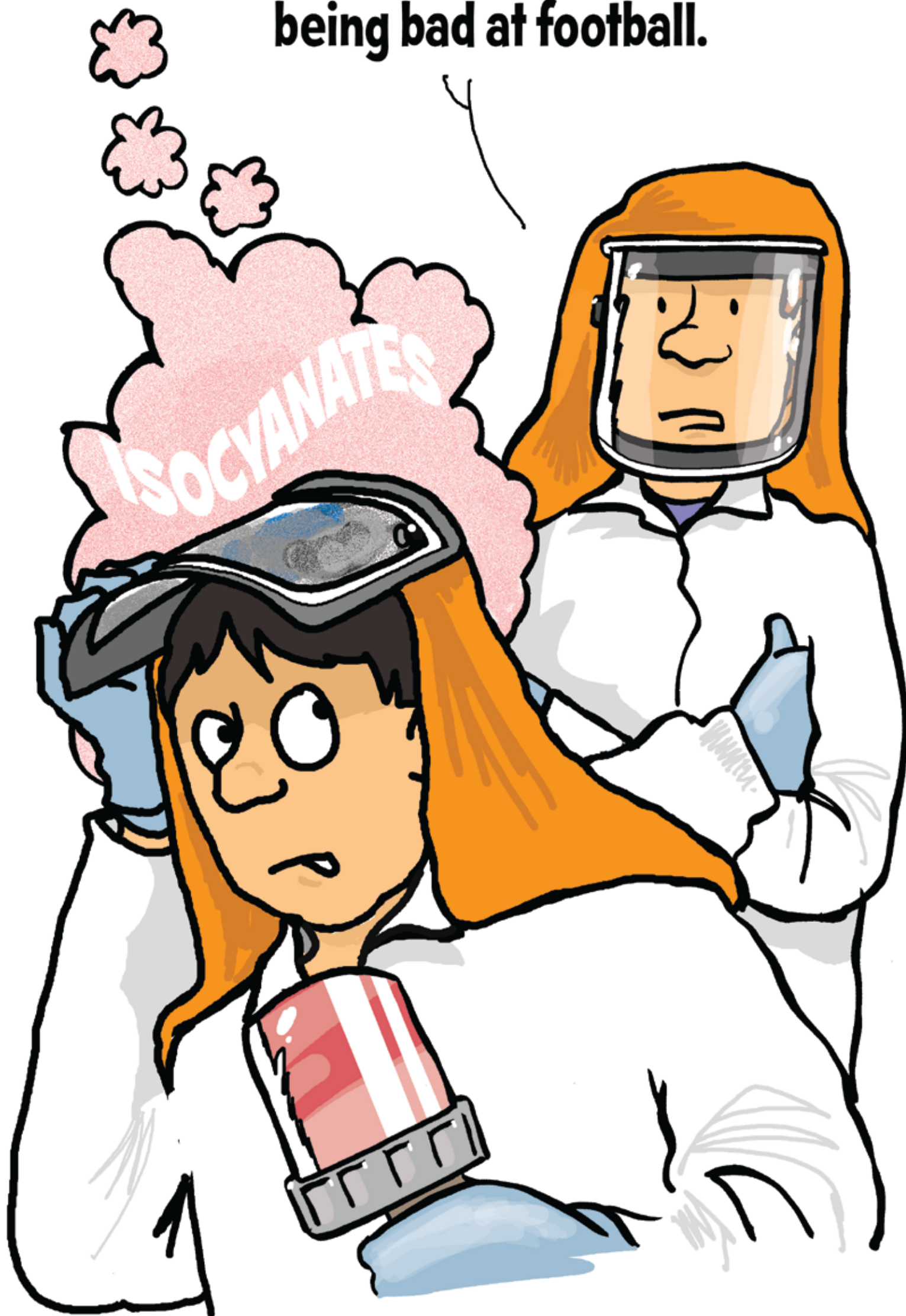


Paint Spraying

I suppose if you get asthma at least you'll have an excuse for being bad at football.



PPE typically used when paint spraying:



All systems require approved Compressed Air Supply Tube (CAST) and couplings.



Items unsuitable for paint spraying:

Any filtering device such as:



Gas and Vapour Respirator



FFP2 Particulate Respirator



Don't lift the visor to inspect the paint job

Isocyanate exposure is the leading cause of occupational asthma. Paint sprayers are most at risk from this serious condition.

Protect Yourself.

3M