

**3M** Science.  
Applied to Life.™

**They want esthetics.  
They need protection.  
Give them both.**

**3M™ Ketac™ Nano  
Light-Curing Glass Ionomer  
Restorative**



# Patients deserve fluoride-releasing restorations that look good.

That's why 3M developed a nano ionomer—an RMGI with a natural-looking polish.

It's well known that glass ionomers can fall short when it comes to esthetics. Now your caries-prone patients won't need to settle for disappointing, dull-looking fillings just because they need the benefit of fluoride release.

Ketac Nano restorative—the first nano ionomer—is a paste/paste, resin-modified glass ionomer based on 3M's unique nanotechnology. It gives restorations a natural-looking gloss for improved esthetics and provides strength and wear resistance, too.



An esthetically pleasing Class V restoration using Ketac Nano restorative.  
Photo courtesy of Dr. Gunnar Reich.

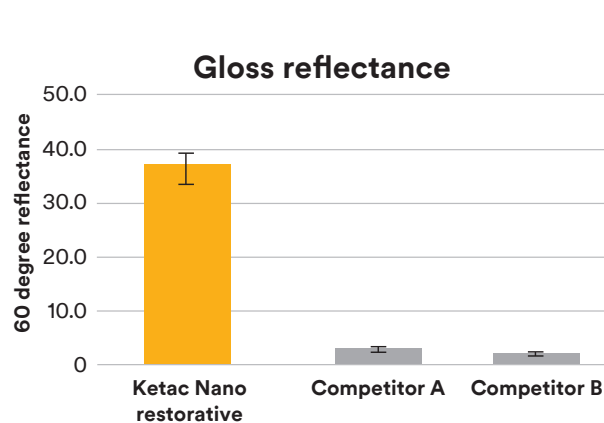
## 3M™ Ketac™ Nano Light-Curing Glass Ionomer Restorative

Available in six shades: A1, A2, A3, A3.5, A4 and B2.



## Why settle for dull-looking glass ionomer fillings when 3M's nano ionomer provides a high-gloss polish?

By lab measurements, or by looking at a side-by-side comparison of samples after polishing, you can see the difference 3M's unique nanofiller technology makes.



Rhpoint Novo-Curve Gloss Meter reflectance readings showed Ketac Nano restorative has a significantly higher gloss reflectance after polishing compared to Competitor A and Competitor B.\*

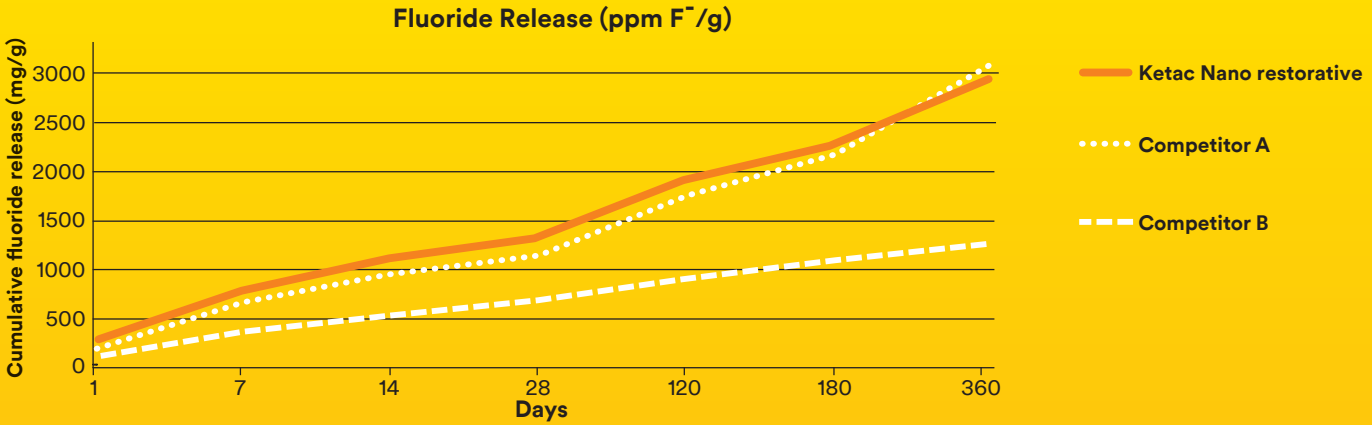


Photographic images of reflectance after polishing show Ketac Nano restorative has an initial gloss that is superior to other resin-modified glass ionomers.\* All shown are Shade A2.

\*Source: 3M internal data

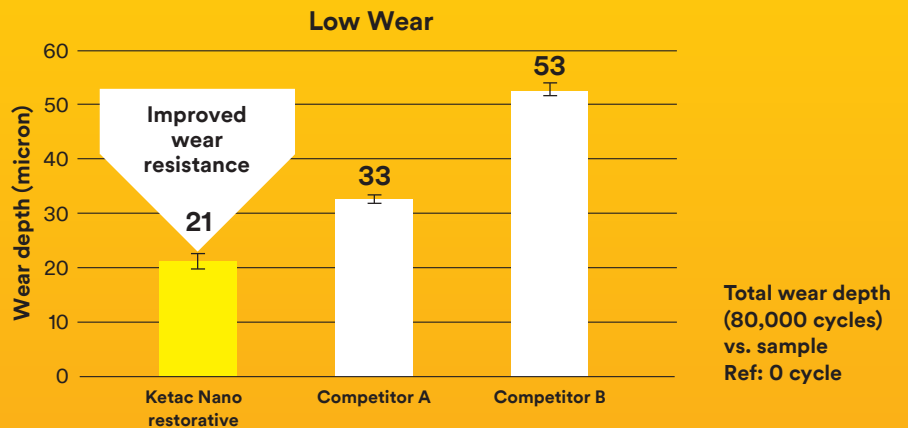
# When you choose better esthetics for your patients, you get high fluoride release and wear resistance, too!

Fluoride-releasing glass ionomers are an important part of everyday dentistry. When tested against other leading resin-modified glass ionomers, 3M™ Ketac™ Nano Light-Curing Glass Ionomer Restorative proves to be an excellent choice for fluoride release. In vitro tests show it also has the ability to recharge the fluoride release after application of a topical fluoride source.



## Low wear for function and esthetics.

Glass ionomers don't typically rank high for wear resistance. That's one reason 3M added nanotechnology to its RMGI technology, creating a new category called nano-ionomer. When tested against conventional and other resin-modified glass ionomers, Ketac Nano restorative showed lower wear. That's important for supporting the tooth's proper function and polish.

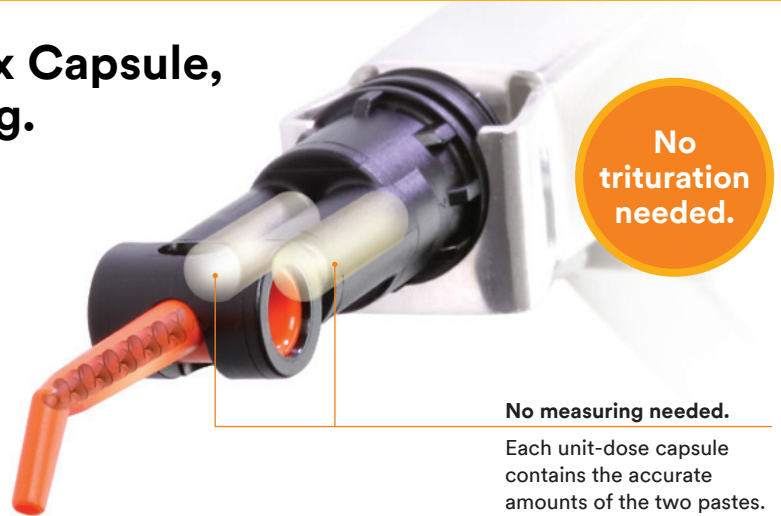
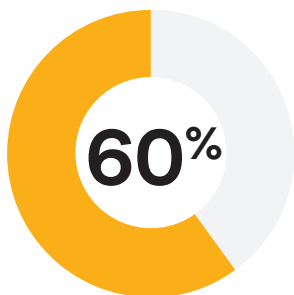


## With the innovative Quick Mix Capsule, there's no measuring or mixing.

The two pastes are mixed inside the tip, saving time and improving overall mixing results.

- No hand mixing needed—less mess and cleanup
- Fewer voids

60% of dentists (n = 120) who used the Quick Mix Capsule in their practice noted fewer voids in their restorations.\*



**No trituration needed.**

**No measuring needed.**

Each unit-dose capsule contains the accurate amounts of the two pastes. It delivers the same amount of material as competitive unit-dose capsules.

**Dispensed directly into the preparation.**

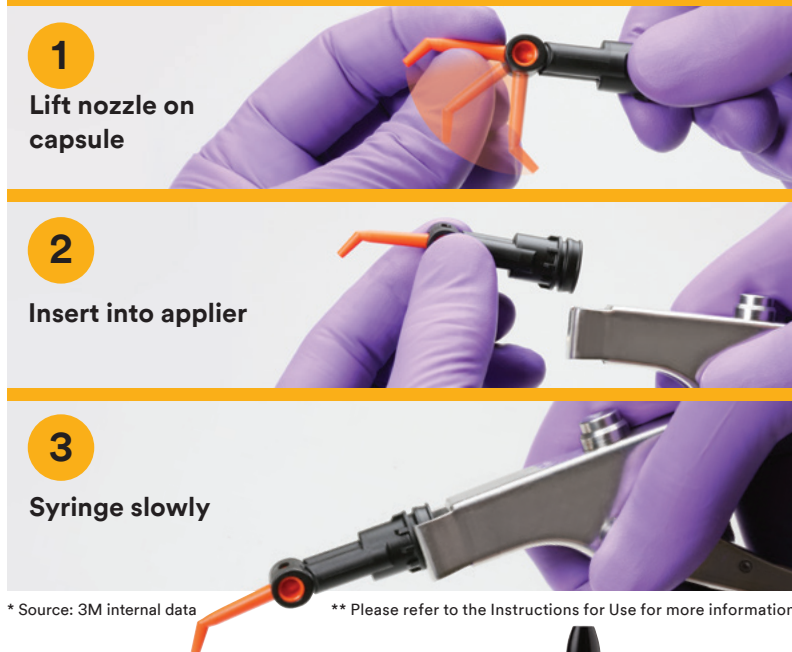
The correct position of the tip for mixing and dispensing is extended straight out—not bent at an angle.

\*Source: 3M internal data

# Convenient and fast, so you can get restless patients out of your chair faster.

With significantly fewer steps, dental assistants find they can prepare the Quick Mix Capsule three times faster than a triturated capsule.\*

## Quick Mix Capsule: 3 steps\*\*



\* Source: 3M internal data

\*\* Please refer to the Instructions for Use for more information.

## Triturated capsule: 11 steps\*

- 1 Shake capsule to loosen powder
- 2 Depress plunger on capsule
- 3 Insert into activator/applier
- 4 Click once to activate
- 5 Remove from applicator/activator
- 6 Insert into mixer
- 7 Mix for 10 seconds
- 8 Remove from mixer
- 9 Insert into applicator
- 10 Two clicks to prime
- 11 Syringe slowly

## Ordering Information

Item #	Product Information
3305TK	<b>3M™ Ketac™ Nano Light-Curing Glass Ionomer Restorative Trial Kit—Quick Mix Capsule</b> Kit includes: 10 – A2 Quick Mix Capsules; 10 – A3 Quick Mix Capsules; Primer (3ml); Instructions; Technique Guide

**3M™ Ketac™ Nano Light-Curing Glass Ionomer Restorative Refills**  
 1 Quick Mix Capsule Refill includes: 20 capsules

Shade	Quick Mix Capsule Item #
A1	3305A1
A2	3305A2
A3	3305A3
A3.5	3305A3.5
A4	3305A4
B2	3305B2

3304P	<b>3M™ Ketac™ Nano Light-Curing Glass Ionomer Restorative Primer</b> 1 – 6.5ml Vial Primer
-------	---

Item #	Product Information
3304TK	<b>3M™ Ketac™ Nano Light-Curing Glass Ionomer Restorative Trial Kit—Clicker™ Dispenser</b> Kit includes: 1 – 12g Clicker Dispenser A2; Primer (6.5ml); 10 Delivery Tips with Pistons; Instructions; Technique Guide

3304I	<b>3M™ Ketac™ Nano Light-Curing Glass Ionomer Restorative Introductory Kit—Clicker™ Dispenser</b> Kit includes: 1 – 12g Clicker Dispenser A1; 1 – 12g Clicker Dispenser A3; Primer (6.5ml); 50 Delivery Tips with Pistons; Mixing Pad; 50 Fiber Tips; 1 Applicator Handle; 48 Disposable Mixing Wells; Shade Guide; Instructions; Technique Guide
-------	--

**3M™ Ketac™ Nano Light-Curing Glass Ionomer Restorative Refills**

1 – 12g Clicker™ Dispenser refill = 40 applications

Shade	Clicker Dispenser Item #
A1	3304A1
A2	3304A2
A3	3304A3
A3.5	3304A3.5
B2	3304B2



[www.3M.com/Dental](http://www.3M.com/Dental)

3M Oral Care  
 2510 Conway Avenue  
 St. Paul, MN 55144-1000 USA  
 Phone 1-800-634-2249  
 Web 3M.com/dental

3M Canada  
 Post Office Box 5757  
 London, Ontario N6A 4T1  
 Canada  
 Phone 1-888-363-3685

3M, ESPE and Ketac and are trademarks of 3M or 3M Deutschland GmbH. Used under license in Canada. Please recycle. © 3M 2017. All rights reserved. All other trademarks are owned by their respective owners and not 3M. 70-2013-0937-7