

How to get
**Breakthrough
Performance**

using
**AdperTM
PromptTM**
Self-Etch Adhesive



ILLUSTRATED INSIDE:

- How to properly activate the L-PopTM Applicator
- Direct light-cure restoration
- Sealing pits and fissures with the NO-RINSE sealant technique
- Treating hypersensitivity

Adper™ Prompt™ L-Pop™ Self-Etch Adhesive

Proper Activation and Dispensing

Proper activation is the key to ensuring the proper mix of adhesive and activator ... and for achieving excellent clinical results.

Easy to Activate

- The L-Pop™ unit-dose applicator allows for easier flow of material from one chamber to the next.
- When the material moves from the red chamber to the yellow chamber, the indentation in the yellow chamber pops up to show that the material has properly transferred.



For maximum effectiveness, follow the simple steps outlined here to ensure proper activation.

Activation and Dispensing



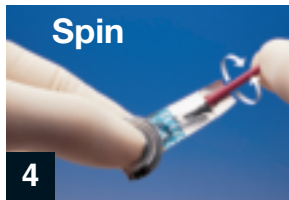
Squeeze the material from the **red** reservoir into the **yellow** (middle) reservoir. The yellow reservoir will expand indicating transfer of fluid.



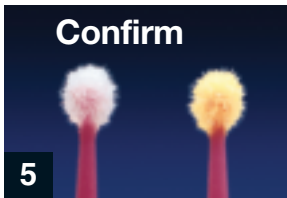
Carefully fold back the **red** reservoir until it meets the flat face of the **yellow** reservoir. Keep the red reservoir tightly squeezed while bending the package to keep material from flowing back.



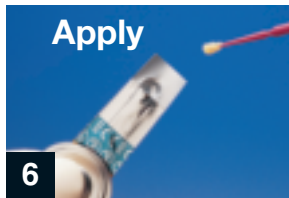
Squeeze the liquid from the **yellow** reservoir into the **green** reservoir.



Spin or churn applicator for **5 seconds** to mix the adhesive.



The adhesive's subtle yellow tint acts as a visual cue that the product has been properly mixed.



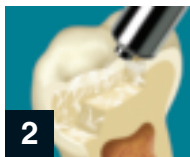
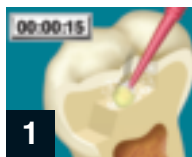
Fully coat the applicator tip and apply.

Adper™ Prompt™ Self-Etch Adhesive

Direct Light-Cure Restoration

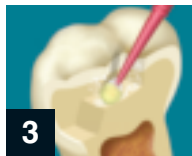
Preparation:

- Clean the unprepared tooth structure with a rubber cup and cleaning paste that is free of fluoride and oil.
- **Rinse thoroughly** with water spray, and dry.



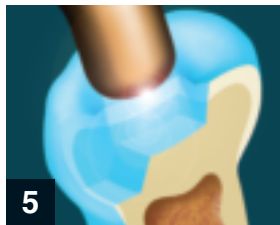
Apply adhesive to the entire surface of the cavity, rubbing in the solution with moderate finger pressure for **15 seconds**. **Do not shorten this time. Proper bonding will not occur if the solution is simply applied and dispersed.**

Use a gentle stream of air to **thoroughly dry** the adhesive to a thin film.



Apply a second coat of adhesive. This coat does not need to be massaged into the surface.

Again, use a gentle stream of air to **thoroughly dry** the adhesive to a thin film.



Light cure for **10 seconds** (3-second exposure with a plasma arc lamp).

Adper™ Prompt™ Self-Etch Adhesive Clinpro™ Sealant

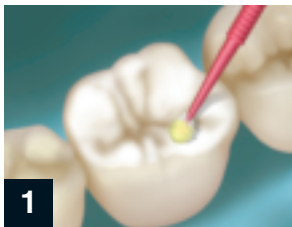
Sealing Pits and Fissures

The NO-RINSE sealant technique saves time and hassle by eliminating the phosphoric acid-etch and rinse steps.

Briefly, here's how it's done:

Preparation

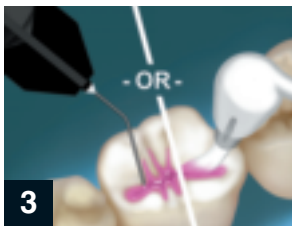
- Thoroughly clean teeth to remove plaque and debris from enamel surfaces and fissures. Do not use any cleaning medium that contains oils or fluoride.
- Rinse thoroughly with water, and dry.
- **Prepare Adper Prompt adhesive according to the instructions for Activation and Dispensing found in this brochure.**



Brush Adper Prompt Self-Etch Adhesive onto surface to be sealed; scrub for **15 seconds**, applying moderate pressure. No separate acid-etch step is needed.

DO NOT RINSE. Instead, use a gentle stream of air to **thoroughly dry** the adhesive to a thin film. A second layer is not required for bonding sealants.

Do not shorten this time. Proper bonding will not occur if the solution is simply applied and dispersed.



Apply a **light-cured** sealant. (Note: Adper Prompt Self-Etch Adhesive is not indicated for self-cure sealants.)

Light-cure the sealant and adhesive together with a halogen, LED or plasma light source for the specified time.

3M™ ESPE™ Clinpro™
Sealant goes on pink for easy-to-see application, then cures to a natural white.

Adper™ Prompt™ Self-Etch Adhesive

Treating Hypersensitive Root Surfaces

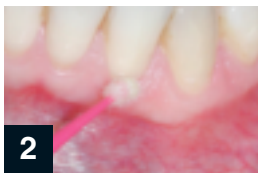
Preparation:

- Clean the surface to be treated with a rubber cup and cleaning paste that is free of fluoride and oil.
- **Rinse thoroughly** with water spray, and dry.

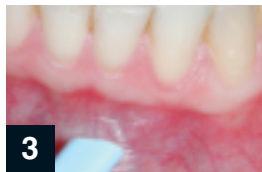
NOTE: Pooling of the bonding material during application is to be avoided.



Prepare the surface as described above.



Apply Adper Prompt adhesive for **15 seconds** using a rubbing motion.



Use a gentle stream of air to **thoroughly dry** the adhesive.



Apply a second layer (no rubbing or waiting time).



Use a gentle stream of air to **thoroughly dry** the adhesive.



Light-cure for **10 seconds** and wipe off air-inhibition layer.

AdperTM PromptTM

Self-Etch Adhesive

Available in our innovative, disposable unit-dose delivery, or vial delivery system.

Please refer to instructions for more detailed information, as well as precautionary and warranty information.



3M ESPE Customer Care Center 800-634-2249

www.3MESPE.com/adperprompt

3M ESPE

Dental Products

3M Center
Building 275-2SE-03
St. Paul, MN 55144-1000
USA
1-800-634-2249

3M Canada

Post Office Box 5757
London, Ontario N6A 4T1
Canada
1-800-265-1840 ext. 6229



*10% post-consumer
waste paper*

©3M 2006.
All rights reserved.

Printed in U.S.A.

3M, ESPE, Adper, Clinpro,
L-Pop and Prompt are
trademarks of 3M or
3M ESPE AG. Used under
license in Canada.

70-2009-3821-8