

RelyX™ Fiber Post | RelyX™ Unicem Self-Adhesive Universal Resin Cement



A stronger post; a proven, one-step cement; and specialized application tip combine for an easier technique and assurance of a long-lasting restoration.

The RelyX “system approach” makes cementing posts easier, and provides better clinical results.

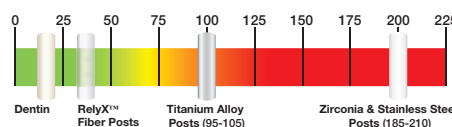
A leading, proven cement and unique applicator assures optimal strength. RelyX™ Unicem Self-Adhesive Universal Resin Cement is clinically proven for bonding posts. And, when you apply it with the RelyX™ Unicem Aplicap™ Elongation Tip, you optimize the potential for long-term stability. That’s because this tip is designed

to reach into the canal – so you apply cement from bottom to top to virtually eliminate voids, which can compromise bond strength. You can imagine how the tip makes the entire process faster, easier and more reliable.

RelyX Fiber Post has a lower risk of root fracture than metal posts.

Clinical research, noted in the graph below, verifies how much more similar the elasticity of RelyX fiber post is to human dentin than metal and ceramic posts – which means a much lower risk of root fracture due to the “wedge effect.”

Elasticity Modulus of Dentin and Post Materials [GPa]



[Source: 3M internal data & Materials Science And Engineering. An Introduction. 5th Ed., Wiley.]

If endodontic retreatment is required, it’s reassuring to know RelyX fiber posts can be removed easily, without damaging the tooth.

RelyX™ Fiber Post



RelyX Fiber Post

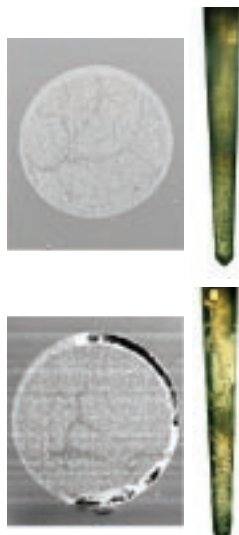
- Elasticity similar to natural dentin means a lower risk of root fracture than with rigid metal/ceramic posts
- Fiber posts eliminate the risk of corrosion that can occur with metal
- Greater fatigue resistance than other leading fiber posts
- Radiopaque

RelyX Unicem Aplicap Elongation Tip

- Helps eliminate cement voids
- Easy application of cement

RelyX Unicem Cement

- Less prep work – no need to etch, prime or bond
- No need to prime or silanize posts when used with RelyX Unicem Cement



Reduce voids with the Elongation Tip. SEM images of a simulated root canal filled with RelyX™ Unicem Cement using the new RelyX™ Unicem Aplicap™ Elongation Tip.

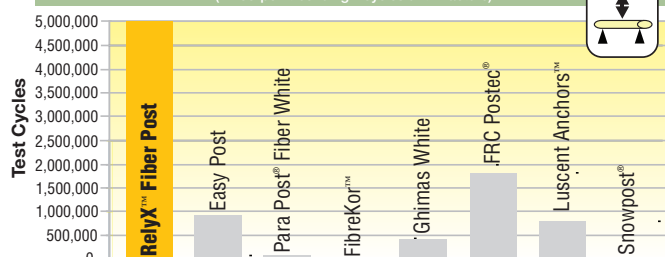
Resin cement applied using a **common method of putting the cement onto the posts before placement.** Voids, which can compromise bond strength, are visible as dark spots in the image on the left.

[Source: Naumann M., Watzke R., University of Berlin, Charité]

RelyX™ Fiber Post has proven itself in test after test.

Fatigue Test

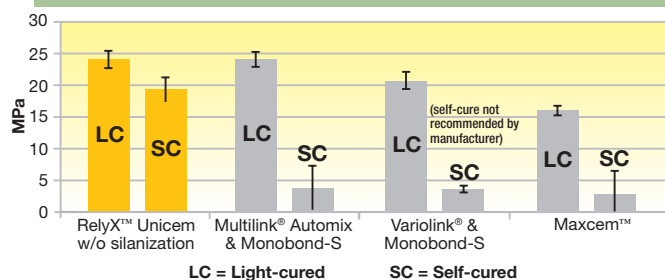
(Three-point bending – cycles until fracture)



FINDING: RelyX™ Fiber Post shows excellent fatigue resistance – the test was stopped after 5 million cycles with no RelyX Fiber Post failures.

[Source: 3M ESPE internal data & preliminary results of external in-vitro study (M. Ferrari, University of Siena, Italy)]

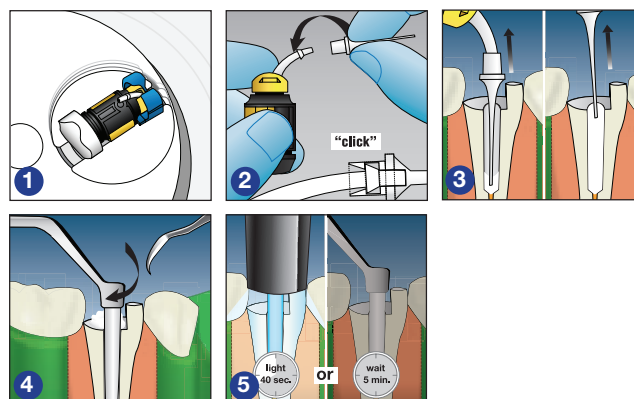
Tensile Bond Strength to RelyX™ Fiber Post (24h)



FINDING: RelyX™ Unicem Cement exhibits high and reliable bond strength to RelyX™ Fiber Post in both light-cure and self-cure modes.

[Source: 3M ESPE internal data.]

RelyX™ Fiber Post is a stronger yet simpler solution for cementing posts.



First, prepare canal for post placement procedure.

1. Activate the RelyX™ Unicem Self-Adhesive Universal Resin Cement Aplicap™ Capsule and mix for **10 seconds** in the RotoMix™ Capsule Mixing Unit from 3M ESPE – or **15 seconds** at highest speed in other units.
2. Attach the RelyX™ Unicem Aplicap™ Elongation Tip to the applicator. Listen for an audible “click.”
3. Apply cement into the root canal from bottom to top. **Keep tip immersed** in the cement initially and then during the entire cementation process to avoid trapped air.
4. Seat post immediately. Twist slightly and apply moderate pressure to hold in position. Remove excess cement before setting post with a scaler or explorer, **OR** tack-cure for **2 seconds**, then remove excess cement.
5. Light-cure for **40 seconds** **OR** allow to self-cure for 5 minutes.

Ordering Information

Item No.	Product Information
56860	RelyX™ Fiber Post Introductory Kit 5 of each: Size 1 Post (1.3mm dia.), Size 2 Post (1.6mm dia.) and Size 3 Post (1.9mm dia.); 4 drills: Size 1, Size 2, Size 3 and a Universal Drill; 20 Elongation Tips; Instructions; Technique Card
	RelyX™ Fiber Post Refills
56861	10 RelyX Fiber Posts of Size 1 (1.3mm diameter); 10 Elongation Tips
56862	10 RelyX Fiber Posts of Size 2 (1.6mm diameter); 10 Elongation Tips
56863	10 RelyX Fiber Posts of Size 3 (1.9mm diameter); 10 Elongation Tips
	RelyX™ Fiber Post Drill Refills
56864	1 RelyX Fiber Post Drills – Size 1 (1.3mm diameter)
56865	1 RelyX Fiber Post Drill – Size 2 (1.6mm diameter)
56866	1 RelyX Fiber Post Drill – Size 3 (1.9mm diameter)
56867	1 RelyX Fiber Post Drill – Size Universal/Reamer
	RelyX™ Fiber Post/RelyX™ Unicem Cement
56868	Combination Kit 5 of each: Size 1 Post (1.3mm dia.), Size 2 Post (1.6mm dia.) and Size 3 Post (1.9mm dia.); 4 drills: Size 1, Size 2, Size 3 and a Universal Drill; 20 Elongation Tips; Instructions; Technique Card PLUS RelyX Unicem Cement Trial Kit, including 20 capsules (assorted); 1 Aplicap Activator/plier Set; Instructions; Technique Card
56829	Trial Kit 20 Aplicap Capsules in assorted shades (10 – A2 Universal, 6 – Translucent, 4 – A3 Opaque); 1 Aplicap Activator/plier Set; Drill; 20 Elongation Tips; Instructions; Technique Card
	RelyX™ Unicem Cement Aplicap™ Capsule Refills
56815	50 Aplicap Capsules in assorted shades (24 – A2 Universal, 16 – Translucent, 10 – A3 Opaque)
	RelyX™ Unicem Cement Aplicap™ Elongation Tips
77550	10 Elongation Tips for use with RelyX Unicem Aplicap Capsules

3M, ESPE, Aplicap, RelyX and RotoMix are trademarks of 3M or 3M ESPE AG.

Brassler Komet ER, Easy Post, Fibiocore, FibreKor, FRC Postec, Ghimas, Luscent Anchors, Maxcem, Multilink, Para Post, Radix, Snowpost and Variolink are not trademarks of 3M.

© 3M 2006. All rights reserved.

3M ESPE

3M ESPE AG · ESPE Platz
82229 Seefeld · Germany
E-mail: info3mespe@mmm.com
Internet: http://www.3mespe.com