

Imprint™ 3 Penta™ Quick Step Heavy Body

Imprint™ 3 Quick Step Light Body

Imprint™ 3 Quick Step Regular Body

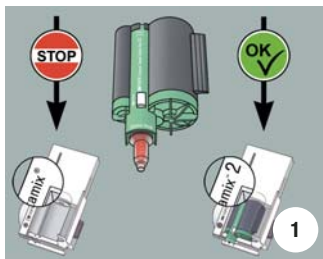
Imprint™ 3 Penta™ Putty

Imprint™ 3 Penta™ Heavy Body

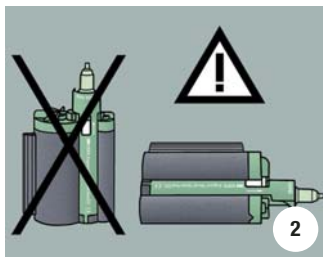
Imprint™ 3 Light Body

Imprint™ 3 Regular Body

VPS Impression Material



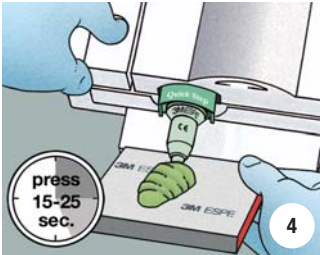
- Only use the Pentamix 2 mixing unit for Imprint 3 Penta Putty and Imprint 3 Penta Quick Step Heavy Body.



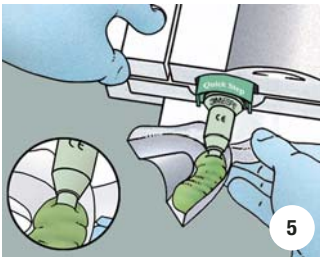
- Store ready-to-use cartridge horizontally.



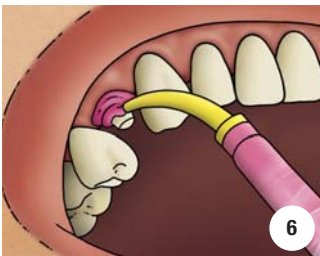
- Insert the loaded Penta cartridge into the Pentamix 2 unit and attach a red Penta Mixing Tip.



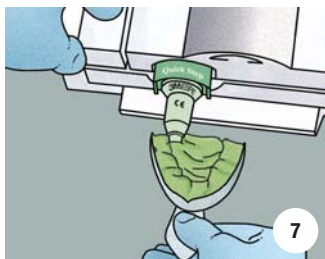
- For initial use extrude a small amount of material and discard it. Wait for a uniform mix.



- Begin filling the tray. Make sure the Penta Mixing Tip is constantly immersed in the paste.



- Syringe the wash material around the clean, dry tooth preparation(s).



- Finish filling the tray.



- Insert and immobilize the tray. The tray must be seated before the end of the working time of the combined materials. Please see flow graphs on the next side for times.



- After removal from the mouth rinse, disinfect and again rinse the impression.
- Wait 120 min to pour the stone model.

3M ESPE

Made in USA by
3M ESPE
 Dental Products
 St. Paul,
 MN 55144-1000

3M ESPE AG
 Dental Products
 82229 Seefeld
 Germany

Imprint 3 Penta Quick Step Heavy Body

Imprint 3 Quick Step Light Body / Imprint 3 Quick Step Regular Body

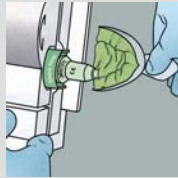
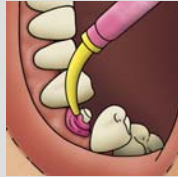
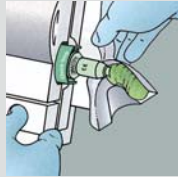


Working Time (at 23°C/74°F)
up to **1:15** (min:sec)



Intraoral Syringe Time (at 37°C/99°F)
up to **0:40** (min:sec)

Intraoral Setting Time (at 37°C/99°F)
2:30 (min:sec)



Imprint 3 Penta Putty

Imprint 3 Light Body / Imprint 3 Regular Body



Working Time (at 23°C/74°F)
up to **1:30** (min:sec)



Intraoral Syringe Time (at 37°C/99°F)
up to **1:00** (min:sec)

Intraoral Setting Time (at 37°C/99°F)
3:00 (min:sec)



Imprint 3 Penta Heavy Body

Imprint 3 Light Body / Imprint 3 Regular Body



Working Time (at 23°C/74°F)
up to **2:00** (min:sec)



Intraoral Syringe Time (at 37°C/99°F)
up to **1:00** (min:sec)

Intraoral Setting Time (at 37°C/99°F)
3:30 (min:sec)

