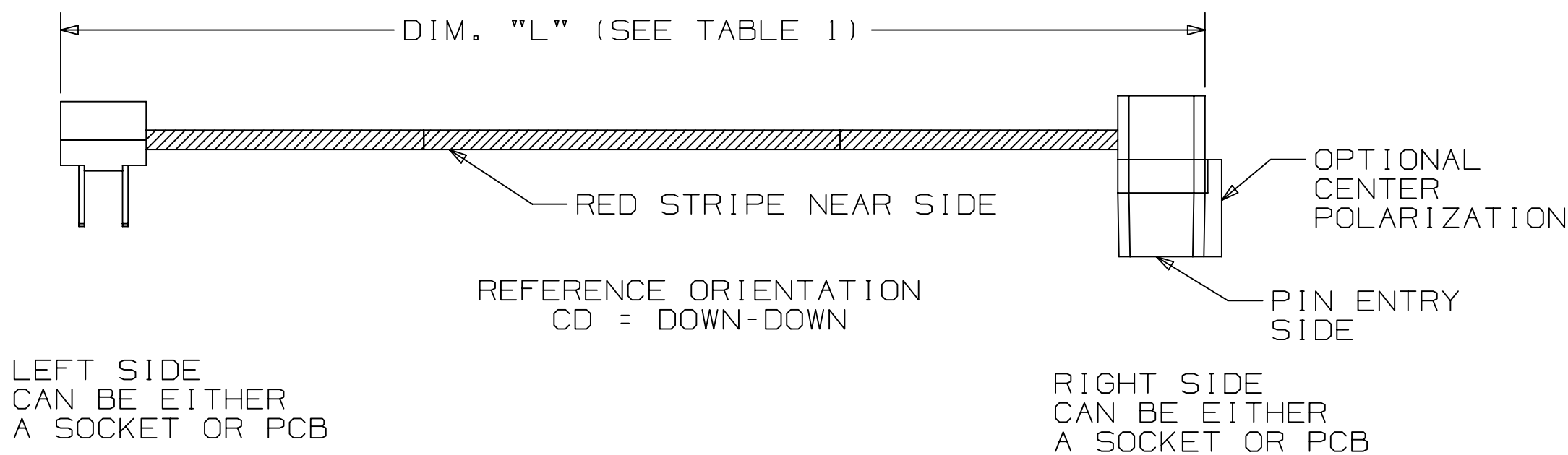
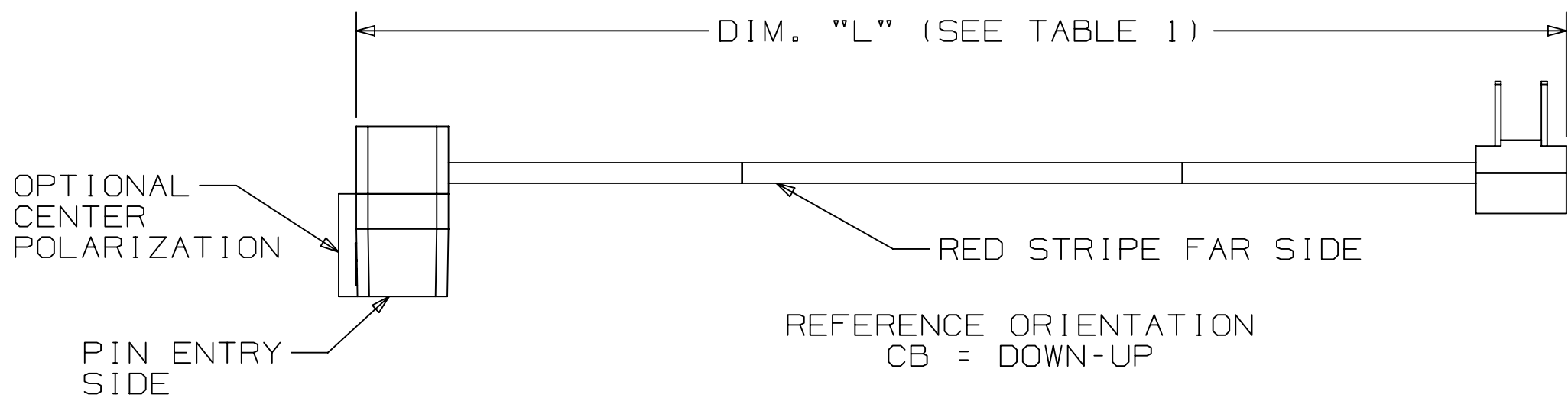
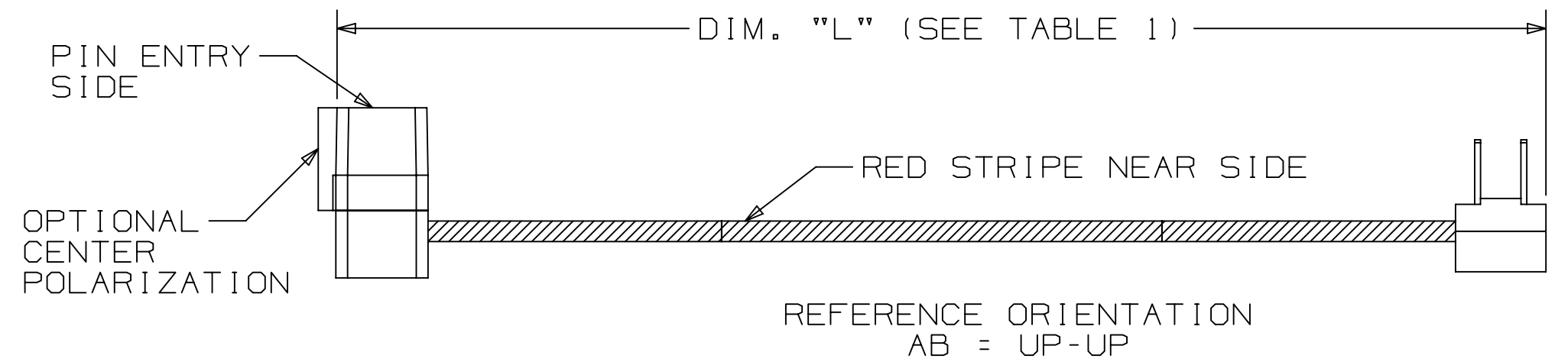
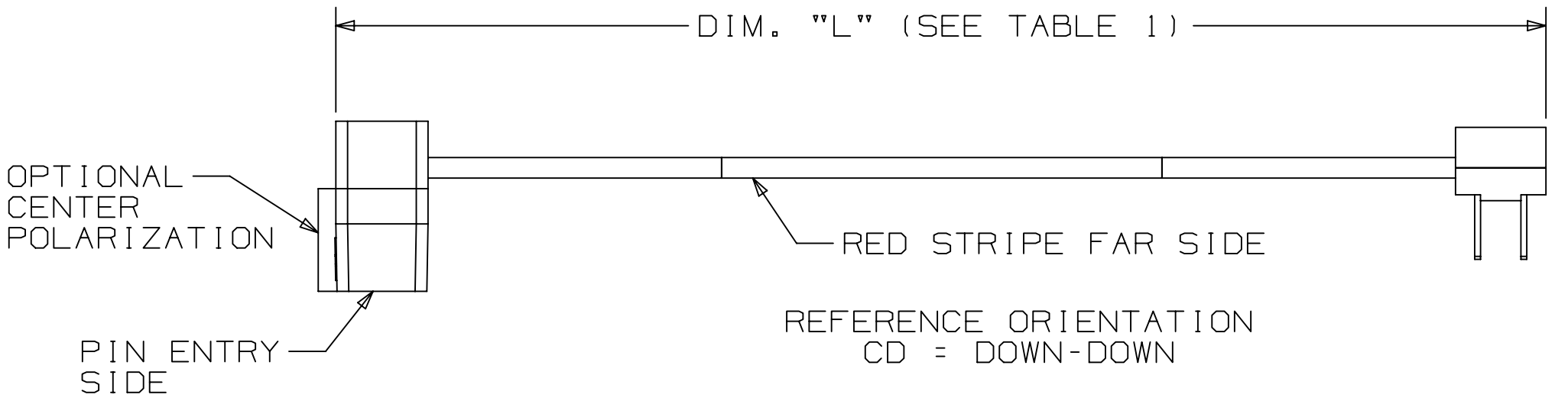
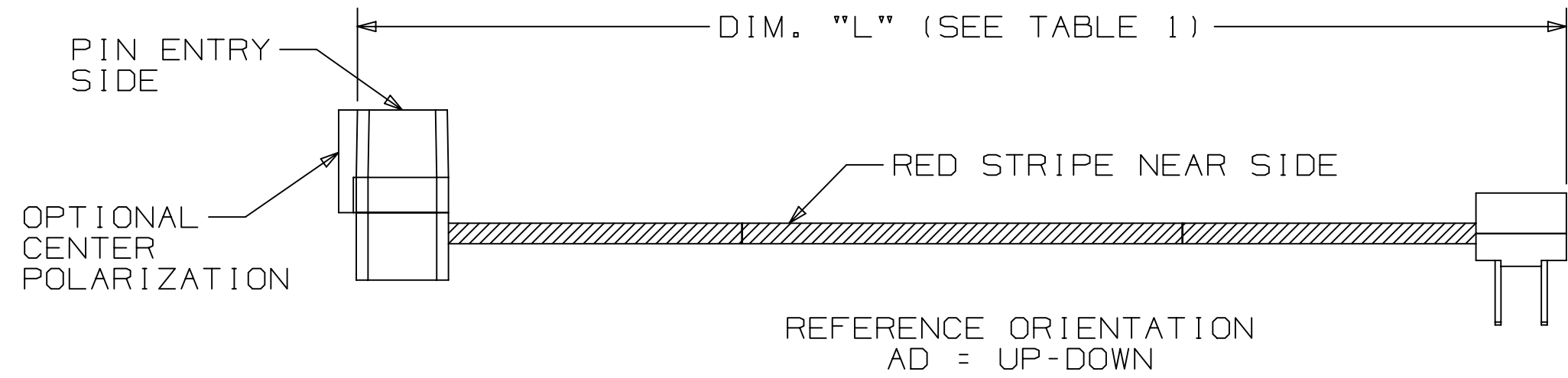


3M™ MOLDED ASSEMBLY, 2M SERIES  
2MM X 2MM FOR 1MM PITCH CABLE, CABLE ASSEMBLY CONNECTOR



MOLDED SOCKET:

- \* PART OF A COMPLETE CABLE ASSEMBLY.
- \* ONE PIECE, MOLDED-ON CONSTRUCTION PROVIDES INTEGRAL STRAIN RELIEF.
- \* MATES WITH INDUSTRY STANDARD .020" SQUARE CONTACTS ON 2MM X 2MM CENTER HEADERS.
- \* CENTER POLARIZATION FEATURE AVAILABLE.
- \* LOW PROFILE ALLOWS CLOSE STACKING BETWEEN COMPONENTS AND BOARDS.
- \* CLOSED-END CONSTRUCTION.
- \* OPTIONAL LATCHING EAR FEATURE.
- \* OPTIONAL END GUIDE RIBS AVAILABLE ON 40 AND 50 POSITION.
- \* MODULAR TOOLING ALLOWS CUSTOMIZED DESIGNS.

MOLDED PCB:

- \* MATES WITH INDUSTRY STANDARD 2MM X 2MM BOARD PATTERN.
- \* PART OF A COMPLETE CABLE ASSEMBLY.
- \* ONE PIECE, MOLDED-ON CONSTRUCTION WITH INTEGRAL STRAIN RELIEF.
- \* COMBINES THE FUNCTION OF HEADER AND SOCKET INTO ONE COMPONENT FOR REDUCED PARTS COUNT.
- \* MINIMIZES PC BOARD SPACE.
- \* LOW PROFILE ALLOWS CLOSE STACKING BETWEEN COMPONENTS AND BOARDS.
- \* CLOSED-END CONSTRUCTION.

2 PHYSICAL :

INSULATOR:

- \* MATERIAL: GLASS FILLED POLYESTER (PBT)
- \* FLAMMABILITY: UL94V-0
- \* COLOR: GRAY
- \* CONTACT: COPPER ALLOY
- \* MATERIAL: COPPER ALLOY

PLATING SOCKET:

- \* UNDER PLATING & "U" SLOT: 50-150μ" [1.27-3.81μm] NICKEL
- \* WIPING AREA: 30μ" [0.76μm] AVG. GOLD

PLATING PCB:

- \* UNDER PLATING & "U" SLOT: 50-150μ" [1.27-3.81μm] NICKEL
- \* SOLDER TAILS: 300-400μ" [7.62-10.16μm] MATTE TIN

WIRE ACCOMMODATION: 28 AWG STRANDED

COVER/STRAIN RELIEF RETENTION: 5N MIN. PER CONTACT

MARKINGS: 3M LOGO AND ORIENTATION TRIANGLE (SOCKET ONLY)

2 ELECTRICAL :

CURRENT RATING: 1A

INSULATION RESISTANCE: >1 X 10<sup>9</sup>Ω AT 500 V<sub>DC</sub>

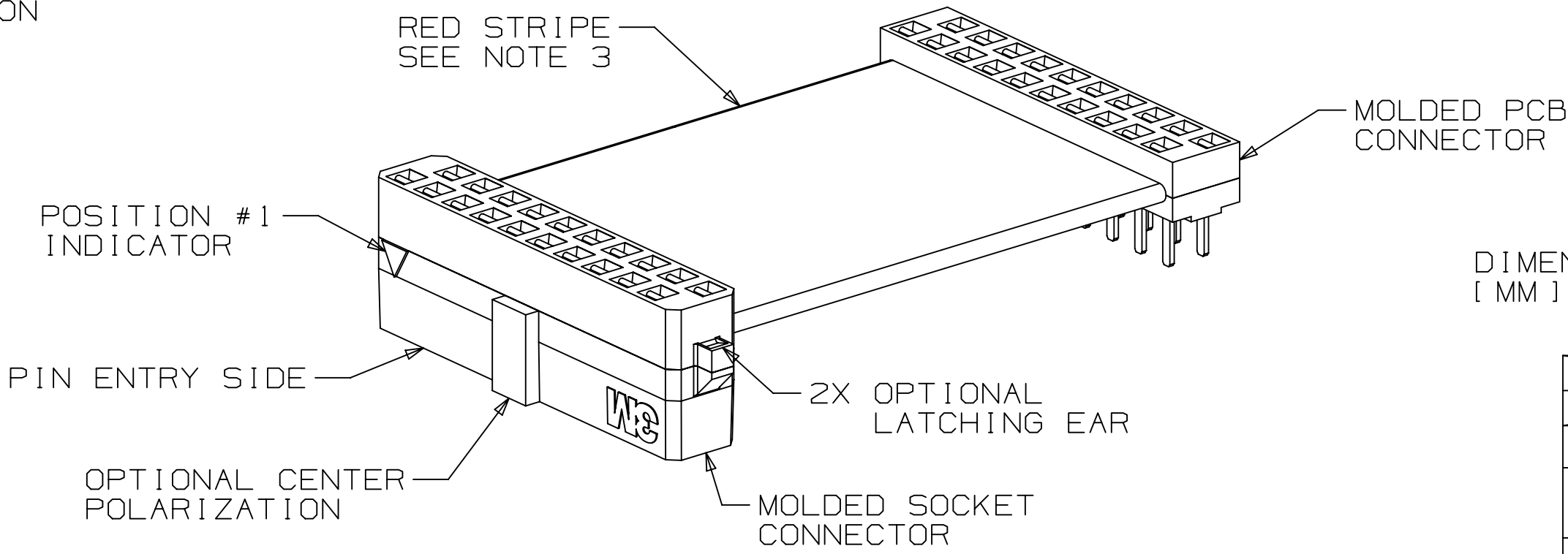
WITHSTANDING VOLTAGE: 1,000V<sub>RMS</sub> AT SEA LEVEL

VOLTAGE RATING: 30V

2 ENVIRONMENTAL :

TEMPERATURE RATING: -55°C TO 105°C

NOTE: THE TEMPERATURE RANGE CAN BE LIMITED BY THE SELECTED CABLE.



VIEW SHOWN FOR REFERENCE ONLY  
(ORIENTATION CD, DOWN-DOWN)

UL FILE NO: E86982

DIMENSIONS: INCHES [MM]  
[MM] IS REF. ONLY

DESIGN REFERENCE		NEXT ASSEMBLY	
AXIS CODES			
DIVISION		DIVISION CODE	EMSD
DO NOT SCALE DRAWING	SCALE 4/1	TOLERANCES EXCEPT AS NOTED	
THIRD ANGLE PROJECTION		INTERPRET PER ASME Y14.5 - 2018	
MAX. SURFACE ROUGHNESS		ALL SURFACES	
		MARKED ONLY	

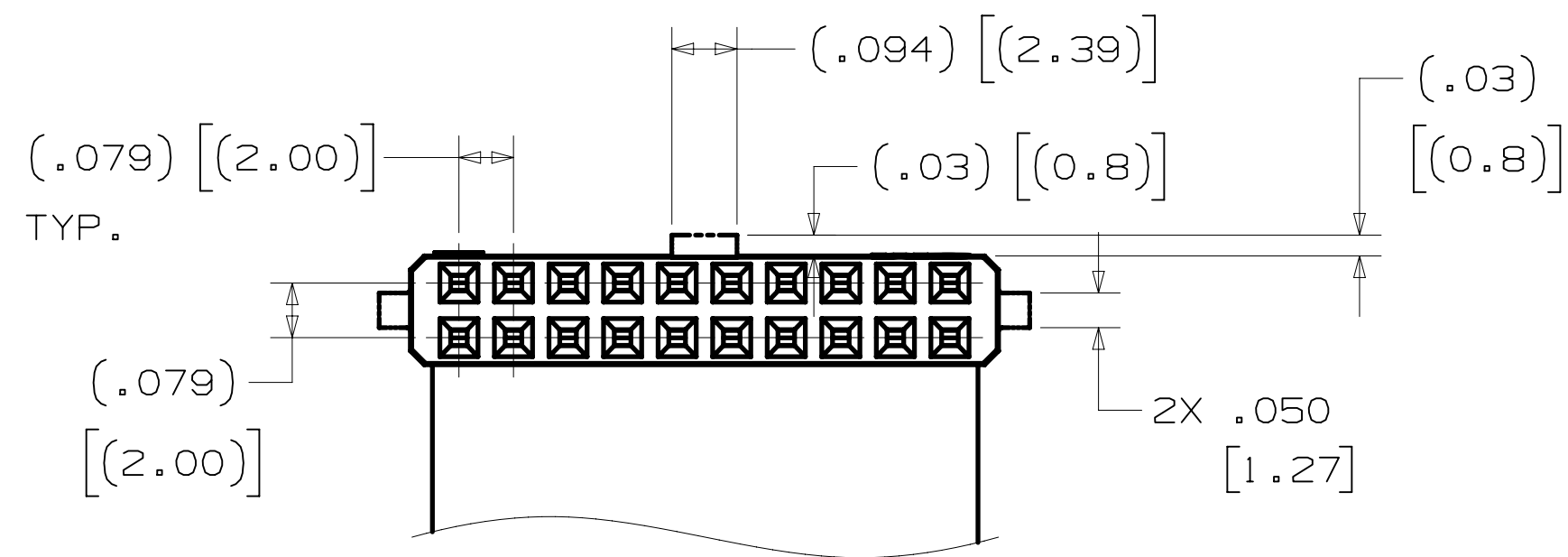
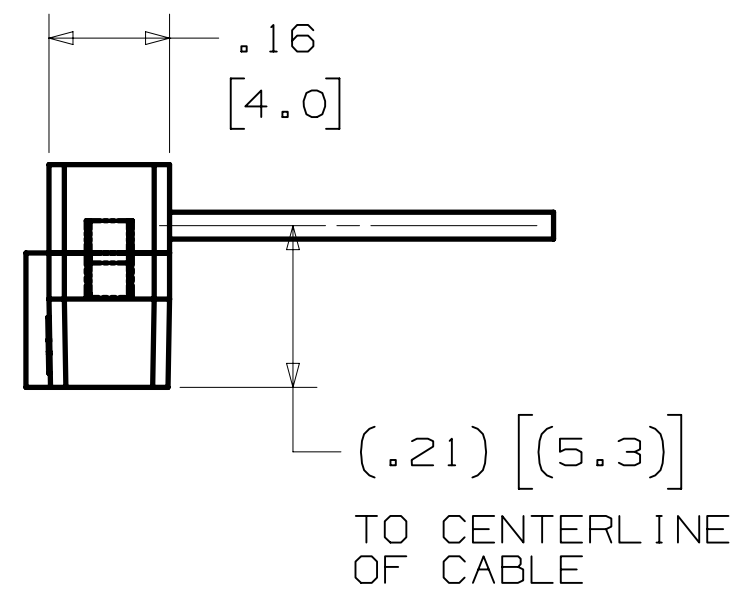
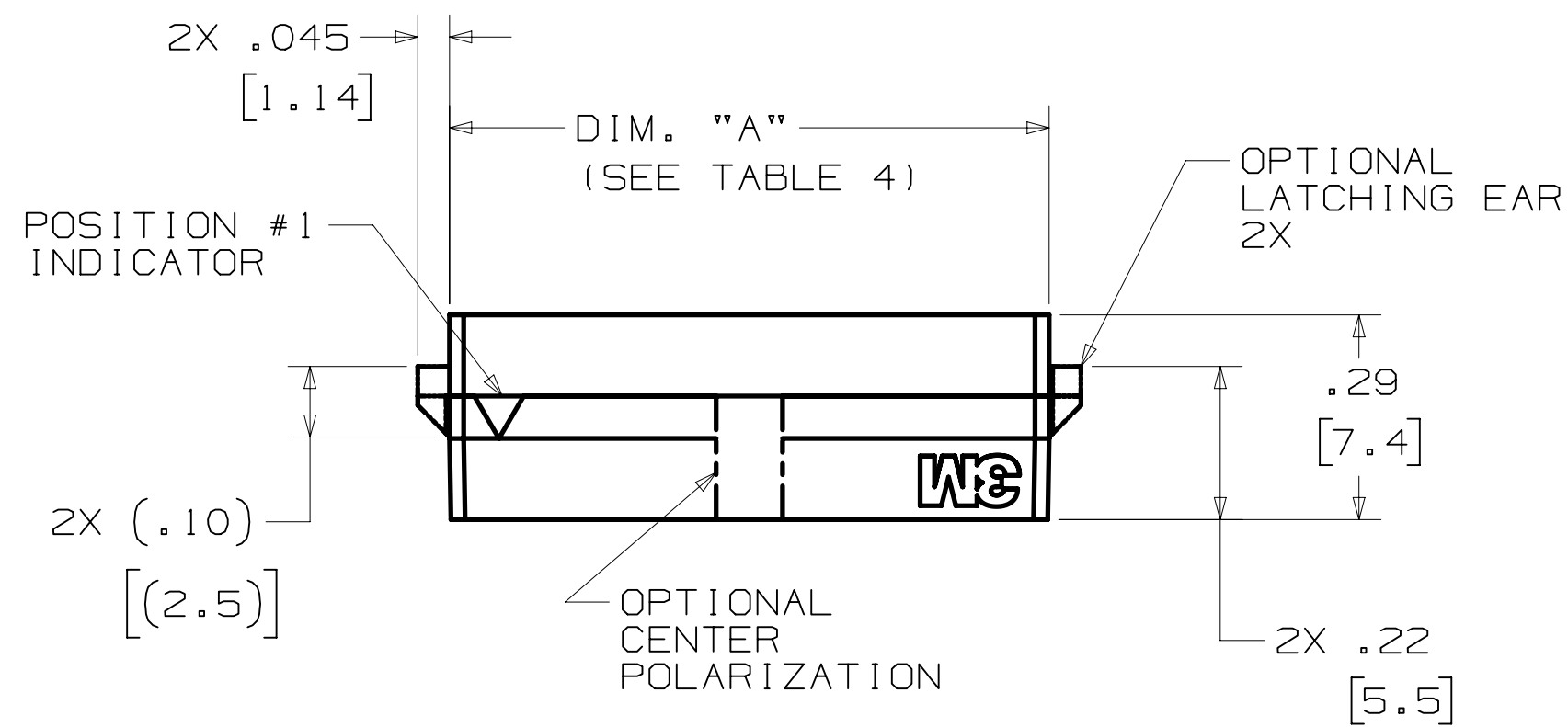
B	108514	JAN 19,2023	JNC	JG
A	104943	MAY 24,2022	JNC	JG
REV	ECO	ISSUE DATE AND DESCRIPTION	DRFT	CHKD
DRFT	CASTIGLIONE	DATE FEB 03,2022	DATE	
CHKD		DATE	DATE	
		APPR. J. GOERTZ	DATE FEB 17,2022	
© 3M COPYRIGHT 2023				
This document and the information it contains are 3M property and may not be reproduced or further distributed without 3M permission, or used or disclosed other than for 3M authorized purposes. All rights reserved.				
TITLE				
MOLDED ASSEMBLY, 2M SERIES FOR 1MM PITCH CABLE				
CAGE NUMBER	SIZE	DRAWING NO.	REV.	
D		78-5100-2753-1	B	
MODEL	2M	DET	YES	NO
			SHT 1	OF 5

3M ELECTRONICS MATERIALS SOLUTIONS DIVISION  
INTERCONNECT SOLUTIONS  
<http://www.3M.com/interconnect>

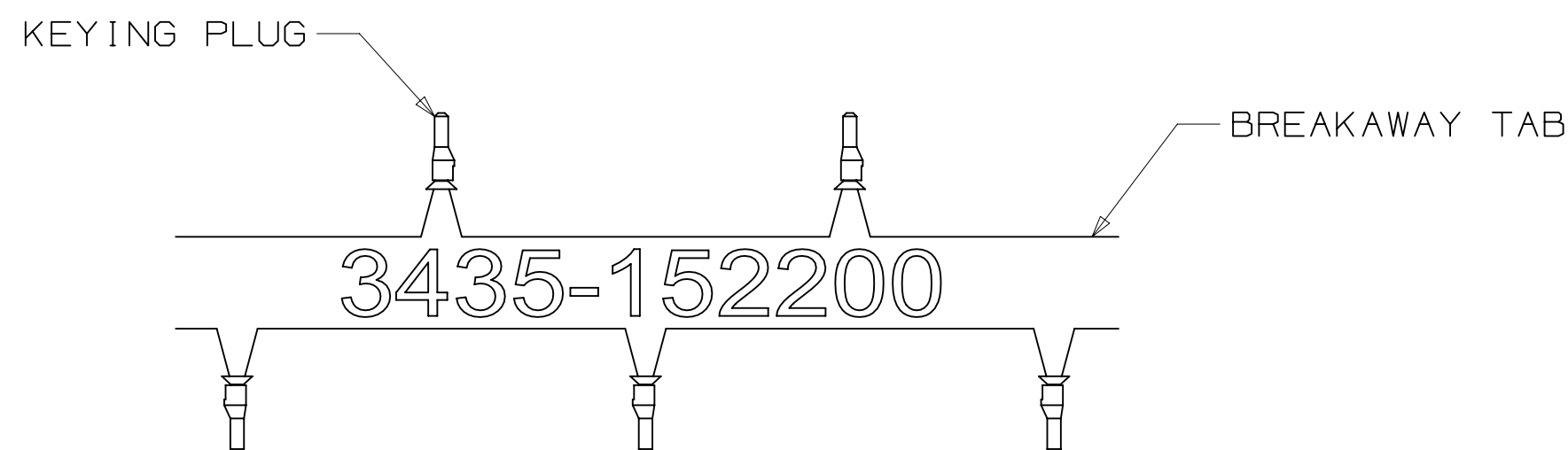
3M IS A TRADEMARK OF 3M COMPANY.  
FOR TECHNICAL, SALES OR ORDERING  
INFORMATION CALL 800-225-5373



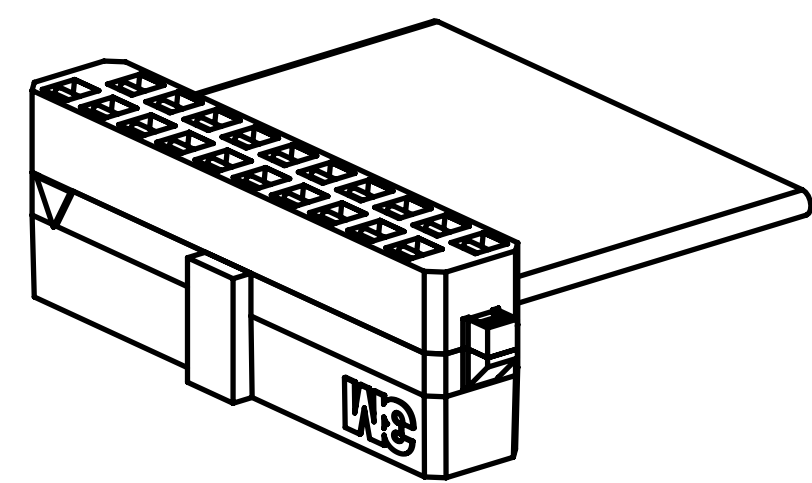
3M™ MOLDED ASSEMBLY, 2M SERIES  
2MM X 2MM FOR 1MM PITCH CABLE, CABLE ASSEMBLY CONNECTOR



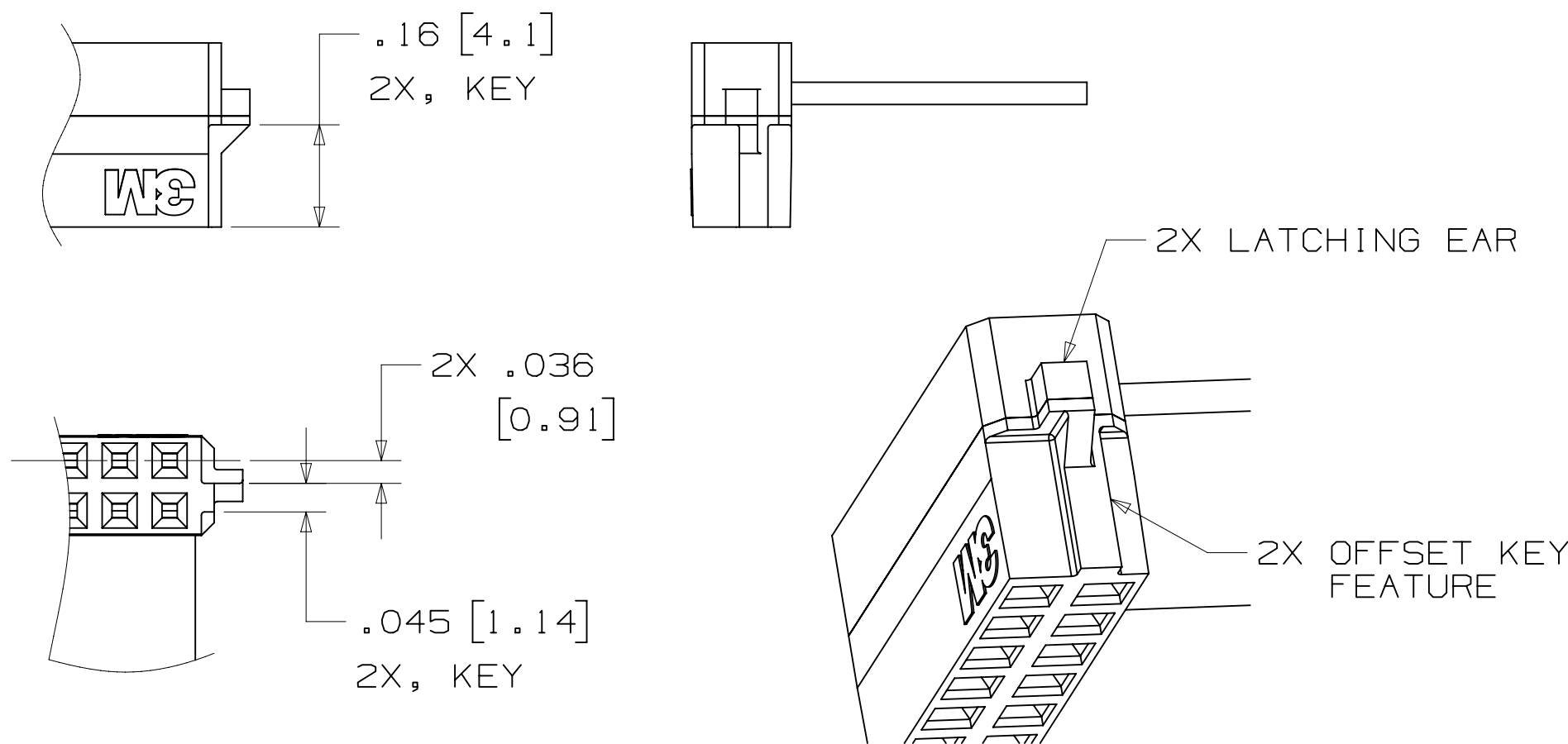
3M™ MOLDDED SOCKET CONNECTOR  
870 SERIES



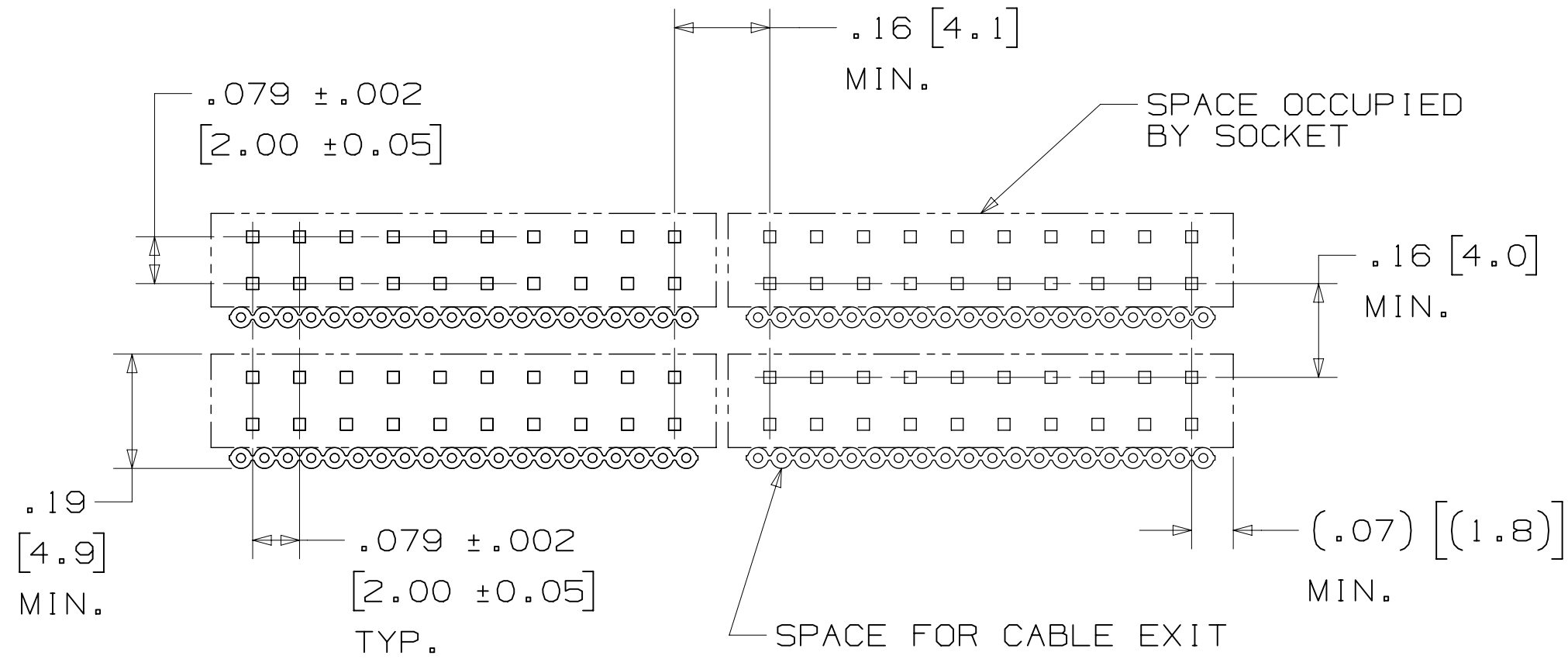
KEYING PLUG  
(OPTIONAL, ORDER SEPARATELY)  
3435-152200



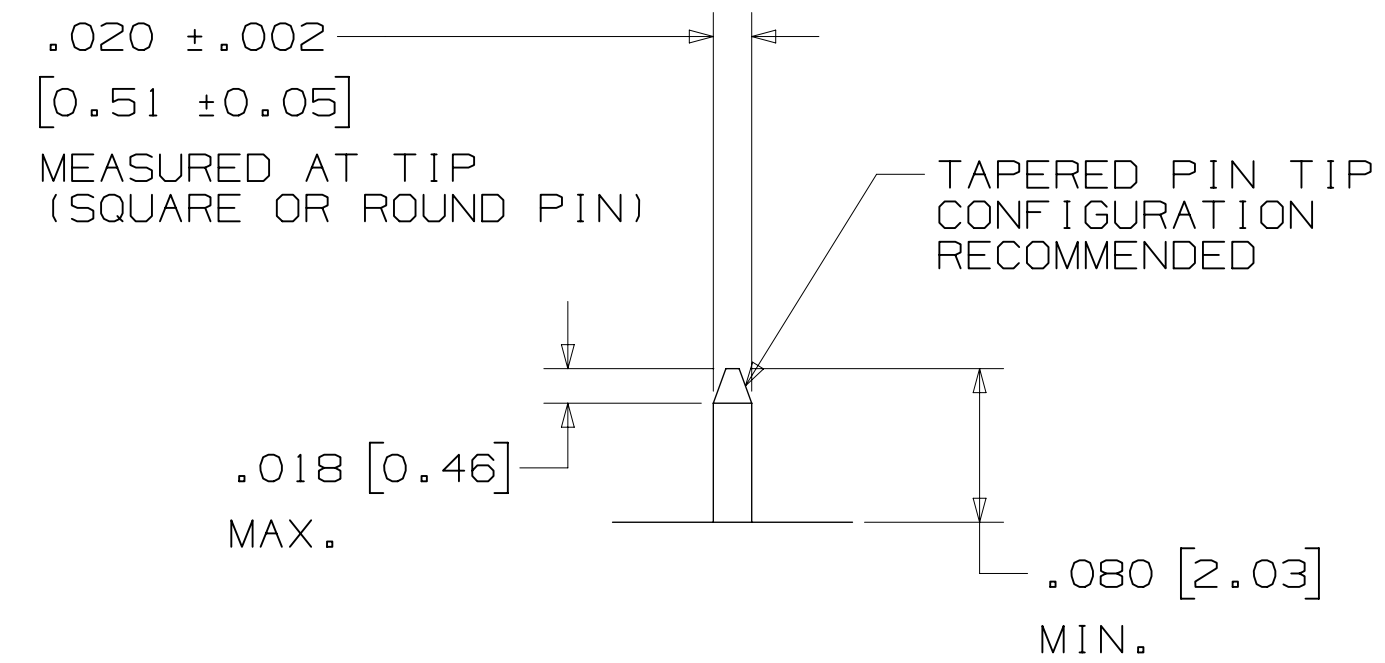
VIEW SHOWN FOR  
REFERENCE ONLY



3M™ MOLDDED SOCKET CONNECTOR  
WITH KEYING FEATURE



RECOMMENDED PIN PATTERN  
FOR STACKED CONFIGURATIONS



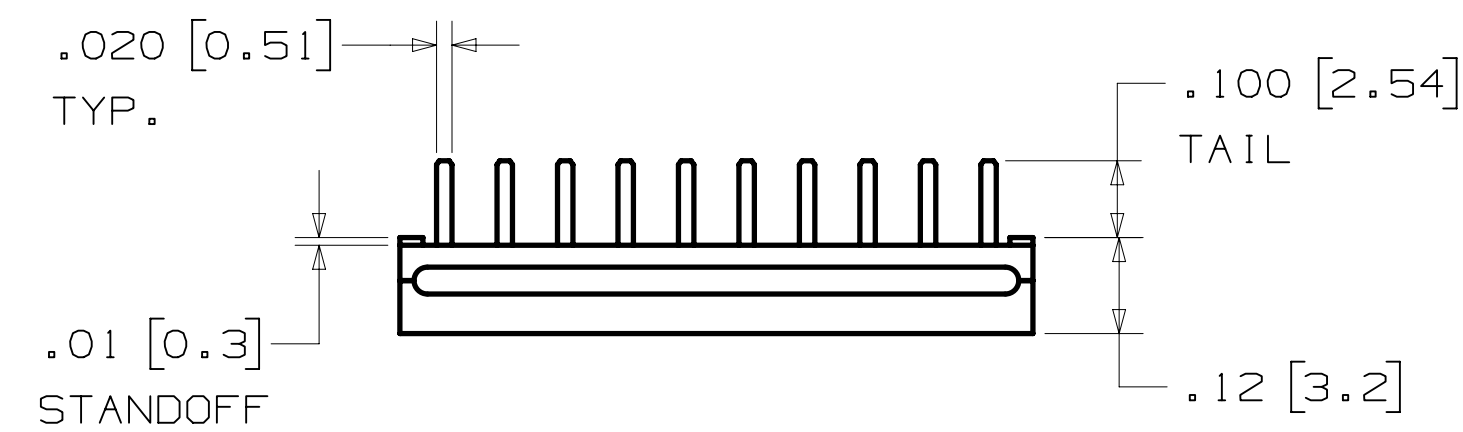
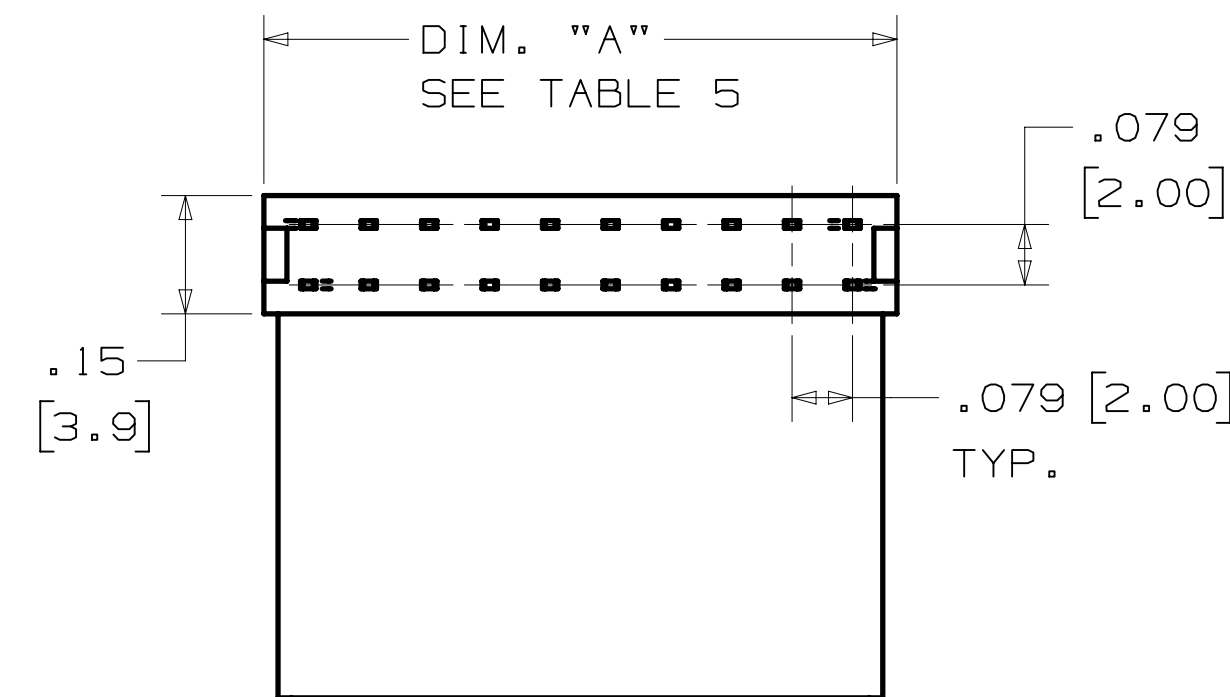
MATING PIN DETAIL

TABLE 4	
CONTACT QTY.	DIM. "A"
06	.27 [ 6.9 ]
08	.38 [ 9.6 ]
10	.46 [ 11.6 ]
16	.69 [ 17.6 ]
20	.85 [ 21.6 ]
22	.93 [ 23.6 ]
24	1.01 [ 25.6 ]
26	1.09 [ 27.6 ]
30	1.24 [ 31.6 ]
34	1.39 [ 35.3 ]
40	1.64 [ 41.6 ]
44	1.79 [ 45.5 ]
50	2.03 [ 51.6 ]

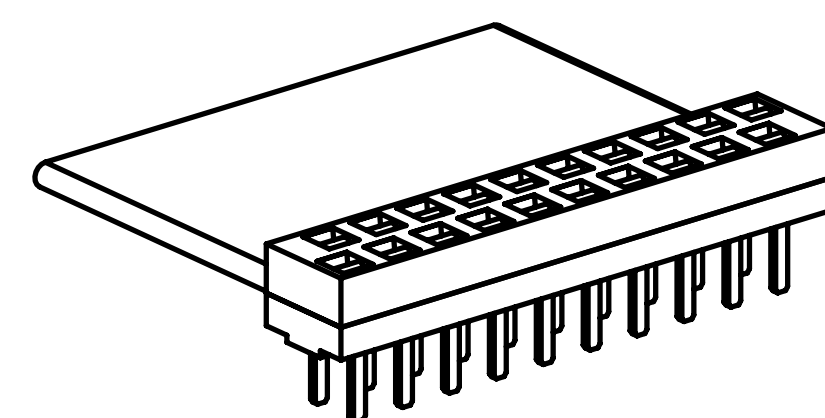
DESIGN REFERENCE		NEXT ASSEMBLY		REV	ECO	ISSUE DATE AND DESCRIPTION		DRFT	CHKD
XREF CODES		DIVISION CODE		CHKD	CASTIGLIONE	DATE	FEB 03, 2022	DATE	FEB 17, 2022
DIVISION		EMSD		3M Center St. Paul, MN 55144		© 3M COPYRIGHT 2023 This document and the information it contains are 3M property and may not be reproduced or further distributed without 3M permission, or used or disclosed other than for 3M authorized purposes. All rights reserved.			
DO NOT SCALE DRAWING		SCALE 4 1		TOLERANCES EXCEPT AS NOTED		TITLE			
THIRD ANGLE PROJECTION		INTERPRET PER ASME Y14.5 - 2018		INCHES .00 ±.01 .000 ±.005 .0000 ±.0002		MOLDED ASSEMBLY, 2M SERIES FOR 1MM PITCH CABLE			
MAX SURFACE ROUGHNESS		SURFACES		MILLIMETERS 0 ±.00 ±.000 ±.000		CAGE NUMBER		DRAWING NO.	
MARKED ONLY		ANGLES		MODEL		D78-5100-2753-1		REV. B	
				2M		DET		SHT 3 OF 5	



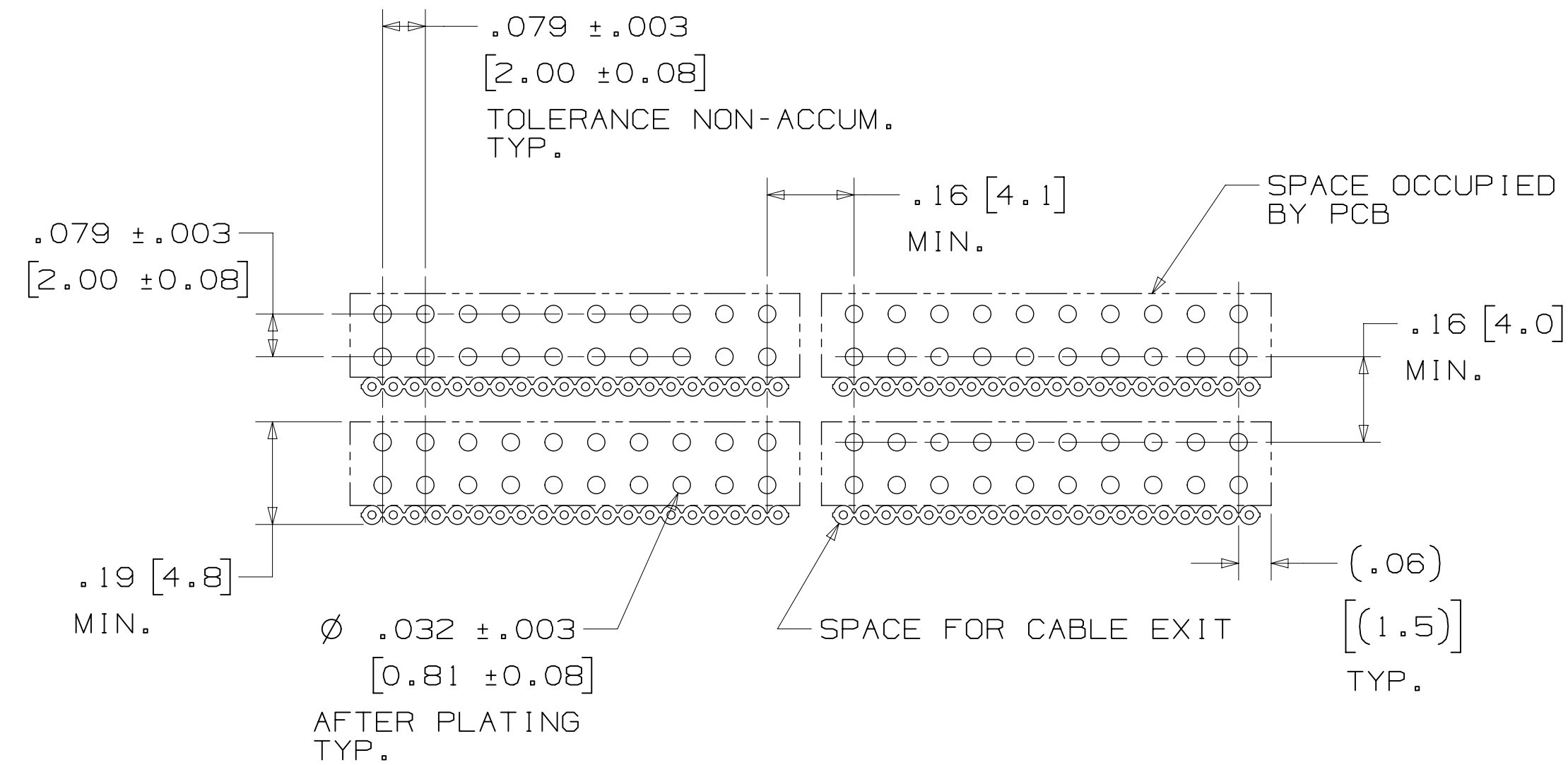
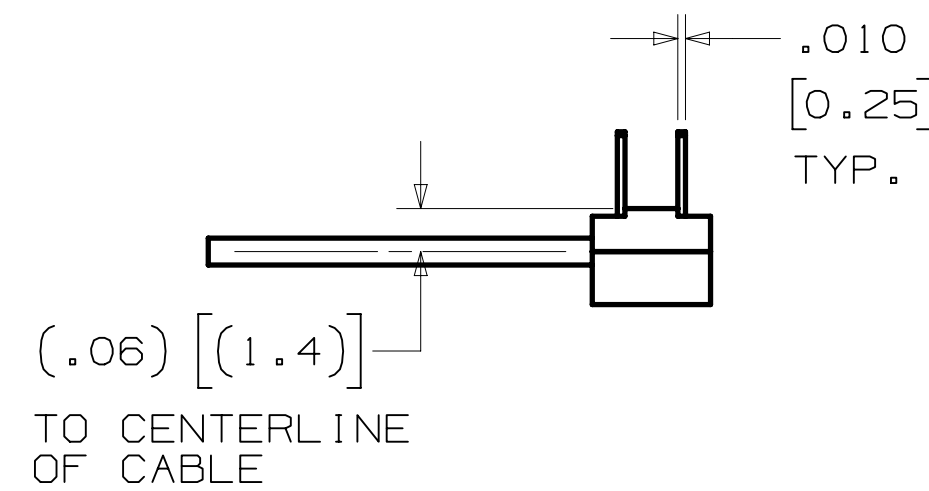
3M™ MOLDED ASSEMBLY, 2M SERIES  
2MM X 2MM FOR 1MM PITCH CABLE, CABLE ASSEMBLY CONNECTOR



# 3M™ MOLDED 2-ROW PCB CONNECTOR 879 SERIES



CONTACT QTY.	DIM. "A"
06	.27 [ 6.9 ]
08	.35 [ 8.9 ]
10	.43 [ 10.9 ]
12	.51 [ 12.9 ]
16	.67 [ 16.9 ]
20	.82 [ 20.9 ]
26	1.06 [ 26.9 ]
30	1.22 [ 31.0 ]
36	1.46 [ 37.0 ]
40	1.61 [ 41.0 ]
44	1.77 [ 45.0 ]
50	2.01 [ 51.1 ]



## RECOMMENDED HOLE PATTERN FOR STACKED CONFIGURATIONS

B		108514		JAN 19, 2023		JNC		JG			
A		104943		MAY 24, 2022		JNC		JG			
				PRODUCTION RELEASE							
DESIGN REFERENCE		NEXT ASSEMBLY		REV		ECO		ISSUE DATE AND DESCRIPTION		CHKD	
<div>ADDRESS CODES</div> <div><div></div><div></div><div></div><div></div><div></div><div></div><div></div><div></div><div></div><div></div></div>		<div><div></div><div></div><div></div><div></div><div></div><div></div><div></div><div></div><div></div><div></div></div>		<div>DRFT CASTIGLIONE</div> <div>CHWD</div>		<div>DATE FEB 03, 2022</div> <div>DATE</div>		<div>MFG</div> <div>APPL. J. GOERTZ</div>		<div>DATE FEB 17, 2022</div>	
DIVISION		DIVISION CODE		<div><div>3M Center</div><div>St. Paul,</div><div>MN 55114</div></div>		<div>© 3M COPYRIGHT 2023</div> <div>This document and the information it contains are 3M property and may not be reproduced or further distributed without 3M permission, or used or disclosed other than for 3M authorized purposes. All rights reserved.</div>					
DO NOT SCALE DRAWING		<div>SCALE 4 1</div>									
<div><div>THIRD ANGLE PROJECTION</div><div>INTERPRET PER ASME Y14.5 - 2018</div><div>MAX SURFACE ROUGHNESS</div><div>ALL SURFACES</div><div><input checked="" type="checkbox"/> MARKED ONLY</div></div>		<div>TOLERANCES EXCEPT AS NOTED</div> <div>INCHES</div> <div>0.0 ± .1</div> <div>0.00 ± .01</div> <div>0.000 ± .005</div> <div>0.0000 ± .0002</div>									
THIRD ANGLE PROJECTION		<div>INTERPRET PER ASME Y14.5 - 2018</div> <div>MAX SURFACE ROUGHNESS</div> <div>ALL SURFACES</div> <div><input checked="" type="checkbox"/> MARKED ONLY</div>		<div>TOLERANCES EXCEPT AS NOTED</div> <div>INCHES</div> <div>0.0 ± .1</div> <div>0.00 ± .01</div> <div>0.000 ± .005</div> <div>0.0000 ± .0002</div>		TITLE		MOLDED ASSEMBLY, 2M SERIES FOR 1MM PITCH CABLE			
CAGE NUMBER		SIZE		DRAWING NO.		REV.		B			
MODEL		2M		D 78-5100-2753-1		DET. LISTS		<input type="checkbox"/> YES <input checked="" type="checkbox"/> NO		SHT 4 OF 5	

## 3M™ MOLDED ASSEMBLY, 2M SERIES

2MM X 2MM FOR 1MM PITCH CABLE, CABLE ASSEMBLY CONNECTOR

Regulatory: For regulatory information about this product, visit [3M.com/regs](http://3M.com/regs) or contact your 3M representative.

**Technical Information:** The technical information, guidance, and other statements contained in this document or otherwise provided by 3M are based upon records, tests, or experience that 3M believes to be reliable, but the accuracy, completeness, and representative nature of such information is not guaranteed. Such information is intended for people with knowledge and technical skills sufficient to assess and apply their own informed judgment to the information. No license under any 3M or third party intellectual property rights is granted or implied with this information.

**Product Use:** Many factors beyond 3M's control and uniquely within user's knowledge and control can affect the use and performance of a 3M product in a particular application. As a result, customer is solely responsible for evaluating the product and determining whether it is appropriate and suitable for customer's application, including conducting a workplace hazard assessment and reviewing all applicable regulations and standards (e.g., OSHA, ANSI, etc.). Failure to properly evaluate, select, and use a 3M product in accordance with all applicable instructions and with appropriate safety equipment, or to meet all applicable safety regulations, may result in injury, sickness, death, and/or harm to property.

Warranty, Limited Remedy, and Disclaimer: Unless a different warranty is specifically stated on the applicable 3M product packaging or product literature (in which case such warranty governs), 3M warrants that each 3M product meets the applicable 3M product specification at the time 3M ships the product. 3M MAKES NO OTHER WARRANTIES OR CONDITIONS, EXPRESS OR IMPLIED, INCLUDING, BUT NOT LIMITED TO, ANY IMPLIED WARRANTY OR CONDITION OF MERCHANTABILITY, FITNESS FOR A PARTICULAR PURPOSE, OR ANY IMPLIED WARRANTY OR CONDITION ARISING OUT OF A COURSE OF DEALING, CUSTOM, OR USAGE OF TRADE. If a 3M product does not conform to this warranty, then the sole and exclusive remedy is, at 3M's option, replacement or repair of the 3M product or refund of the purchase price.

**Limitation of Liability:** Except for the limited remedy stated above, and except to the extent prohibited by applicable law, 3M will not be liable for any loss or damage arising from or related to the 3M product, whether direct, indirect, special, incidental, or consequential (including, but not limited to, lost profits or business opportunity), regardless of the legal or equitable theory asserted, including, but not limited to, warranty, contract, negligence, or strict liability.

Disclaimer: For industrial use only. Not intended, labeled or packaged for consumer sale or use.

3M Company  
Electronics Materials Solutions Division  
13011 McCallen Pass, Bldg. C  
Austin, TX 78753-5380  
1-800-225-5373  
[www.3M.com/interconnect](http://www.3M.com/interconnect)

		B	108514	JAN 19, 2023	JNC	JG
		A	104943	MAY 24, 2022	JNC	JG
		REV	ECO	ISSUE DATE AND DESCRIPTION	DRFT	CHKD
DESIGN REFERENCE		NEXT ASSEMBLY				
<del>ACCESS CODES</del>		<del>DRFT CASTIGLIONE</del>	<del>DATE FEB 03, 2022</del>	<del>MFG J. GOERTZ</del>	<del>DATE FEB 17, 2022</del>	
<del>DIVISION</del>		<del>DIVISION CODE EMSD</del>		<del>© 3M COPYRIGHT 2023 This document and the information it contains are 3M proprietary and may not be reproduced or further distributed without 3M permission, or used or disclosed other than for 3M authorized purposes. All rights reserved.</del>		
DO NOT SCALE DRAWING		TOLERANCES EXCEPT AS NOTED		TITLE		
SCALE 4/1		INCHES .00 ± .01 .000 ± .005 .0000 ± .0002		MOLDED ASSEMBLY, 2M SERIES FOR IMM PITCH CABLE		
THIRD ANGLE PROJECTION		MILLIMETERS .00 ± .000 ± .000 ±		CAGE NUMBER D578-5100-2753-1		
INTERPRET PER ASME Y14.5 - 2018		MAX SURFACE ROUGHNESS		DRAWING NO. 578-5100-2753-1		
✓ UNFINISHED SURFACES		MARKED ONLY		REV. B		
		ANGLE		MODEL 2M		
		DET. YES <input type="checkbox"/> NO <input checked="" type="checkbox"/>			SHT 5 OF 6	