



Telecommunications Room and Consolidation Points

3M™ Volition™ VF-45™ Fiber Optic Patch Panels	17.2
3M™ Fiber Distribution System 8400 Series	17.4

Many of the products in this catalog are certified as compliant with RoHS standards. For a complete and updated listing of specific RoHS-compliant products, refer to the 3M Communications Technology website at www.3M.com/ROHS.

3M™ Volition™ VF-45™ Fiber Optic Patch Panels



3M offers a complete line of fiber patch panels and interconnect solutions for the telecommunications room environment. These high-density and flexible panels are designed for the 3M™ Volition™ VF-45™ Fiber SFF Interconnect.

3M™ VOLITION™ VF-45™ FIBER OPTIC PATCH PANELS

Rack Mounted Patch Panels

PRODUCT NUMBER: **VOL-0400EXP-G**
DESCRIPTION: EXPANSION PANEL FOR VOL-0400 SERIES PATCH PANEL, SLIDE KIT, GREEN
PKG. (LBS.): 1 EACH (1.16) MIN. ORDER: 1 EACH UPC: 051115-14548

PRODUCT NUMBER: **VOL-0400S-G**
DESCRIPTION: PATCH PANEL, RACK MOUNT, 24 PORT 2U WITH CABLE MANAGEMENT SLIDE KIT, GREEN
PKG. (LBS.): 1 EACH (8.00) MIN. ORDER: 1 EACH UPC: 051138-87451

PRODUCT NUMBER: **VOL-0401S-G**
DESCRIPTION: PATCH PANEL, RACK MOUNT, 24 PORT 1U WITHOUT CABLE MANAGEMENT SLIDE KIT, GREEN
PKG. (LBS.): 1 EACH (6.85) MIN. ORDER: 1 EACH UPC: 051138-87453

Patch panel for every installation requiring “flush mount” technology of the 3M™ Volition™ VF-45™ Sockets with maximum port density is designed to provide efficient use of the space in the 19" rack with flush front ports. Each panel includes slide mount hardware to allow access to rear cable management.



Wall Mounted Patch Panels

PRODUCT NUMBER: **VOL-0406B** DESCRIPTION: 6 PORT WALL MOUNTED PATCH PANEL WITH BEZELS
PKG. (LBS.): 1 EACH (2.57) MIN. ORDER: 1 EACH UPC: 051115-13719

Wall-mounted patch panels are manufactured in powder-coated sheet metal and can be fixed to the wall quickly and easily by four screws. A hinged door on the front can be padlocked (not supplied) for extra security.



3M™ Fiber Distribution System 8400 Series



The 8400 series FDU line consists of fiber distribution units, coupling plates and fiber cable management components.

The 8425 family of FDUs can accommodate up to 144 ports and is available in versions that are lockable and/or provide space which allows for up to 72 splices in the rear of the unit.

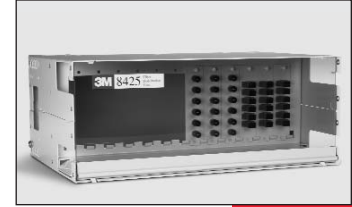
The 8400 series coupling plates are ordered separately providing a full line of industry recognized interconnects. Interconnect coupling systems include LC, SC, ST, FC and 3M™ Volition™ VF-45™ in both multimode and singlemode, 6, 8 and 12 port configurations.

3M™ FIBER DISTRIBUTION SYSTEM 8400 SERIES

Rack Mount Fiber Distribution Units 8425 Series

PRODUCT NUMBER: **8425** PKG. (LBS.): 1 EACH (20.00) MIN. ORDER: 1 EACH UPC: 051138-36618
 DIMENSIONS (H x W x D) CM (IN) - 17.7 x 43.1 x 30.4 (7 x 17 x 12) WEIGHT KG (LBS.) - 8.1 (18)

8425 – Rack mount FDU, 4-U height, maximum capacity of 144 ports.



PRODUCT NUMBER: **8425-L** PKG. (LBS.): 1 EACH (20.00) MIN. ORDER: 1 EACH UPC: 051138-36619
 DIMENSIONS (H x W x D) CM (IN) - 17.7 x 43.1 x 30.4 (7 x 17 x 12) WEIGHT KG (LBS.) - 8.3 (18.5)

8425-L – The 8425 FDU with lockable front and rear panels.
 Two keys included.

PRODUCT NUMBER: **8425-BPL** PKG. (LBS.): 1 EACH (20.00) MIN. ORDER: 1 EACH UPC: 051138-36640
 DIMENSIONS (H x W x D) CM (IN) - 17.7 x 43.1 x 30.4 (7 x 17 x 12) WEIGHT KG (LBS.) - 9.2 (20.5)

8425-BPL – The 8425 FDU with extended back panel which can accommodate up to three 3M™ Splice Trays 2524 to hold up to a maximum of 72 mechanical or fusion splices. Unit shipped with one tray. Order additional trays as required. Both front and back panels are lockable. Two keys included.

Standard ST, SC, FC and LC coupling plates are available in both single and duplex formats and standard port counts.

FEATURES

BENEFITS

Modular construction	Flexible upgrades, customized applications, future expansion
Assortment of coupling plates	Available with all major coupling styles and counts
Integral splice capability	Simplifies installation, less hardware required
Lockable doors	Can provide added protection and security
Front and rear doors recessed	No protruding parts to snag fibers
Wide rear floor – full 43.2 cm (17')	Wide area for routing and storage of fiber
Generous side entry ports	Allows for easy cable entry from any direction
Chassis-mounted cable strain relief and ground lug location	Allows easy use of cable clamps or cable ties
7.6 cm (3") or greater bend diameter throughout	Minimizes macrobending
48.3 cm (19") or 58.4 cm (23") rack	Flexible mounting
Self-contained splicing unit	All activities performed in same unit, can save space and minimize expense
Modular splice management unit	Allows for future expansion with additional cables

3M™ FIBER DISTRIBUTION SYSTEM 8400 SERIES

Fiber Management System 8470

PKG. (LBS.): 1 EACH (39.00) MIN. ORDER: 1 EACH UPC: 051138-36641
 DIMENSIONS (H x W x D) CM (IN) - 33 x 18 x 11.9 (13.1 x 7.1 x 4.7) WEIGHT KG (LBS.) - 13.1 (29)

The fiber management system includes one upper and one lower horizontal fiber trough, as well as five vertical fiber organizers. Components fit all telco and EIA standard 19" and 23" racks. All components are designed to provide minimum bend radii and organization of optical fiber patch cords.

Vertical Jumper Organizer 8475

PKG. (LBS.): 1 KIT (27.00) MIN. ORDER: 1 KIT UPC: 051138-36642
 DIMENSIONS (H x W x D) CM (IN) - 35.5 x 163 x 12.6 (14 x 25 x 5) WEIGHT KG (LBS.) - 6.8 (15)

The 8475 organizer includes five vertical fiber organizers. It is used when jumpering between equipment racks only. Components fit all telco and EIA standard 19" and 23" racks.

Rack Mount Fiber Optic Patch Panel 8423

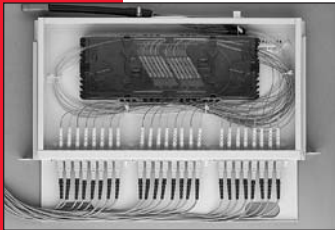
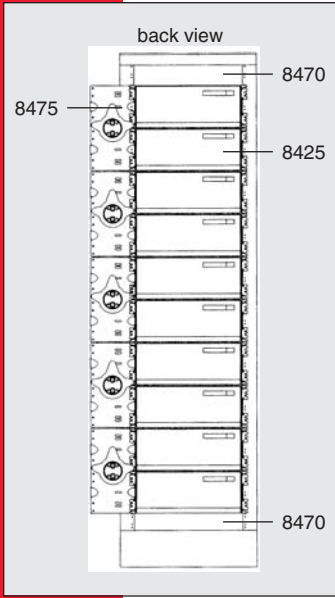
PRODUCT NUMBER: 8423 PKG. (LBS.): 1 EACH (8.00) MIN. ORDER: 1 EACH UPC: 051138-58271
 DIMENSIONS (H x W x D) CM (IN) - 33 x 44.4 x 4.3 (13 x 17.5 x 1.71) CAPACITY PLATES (TRAYS) - 3 (2)

PRODUCT NUMBER: 8423-BKT PKG. (LBS.): 1 EACH (0.50) MIN. ORDER: 1 EACH UPC: 051138-58273
 DIMENSIONS (H x W x D) CM (IN) - 33 x 44.4 x 114.3 (13 x 17.5 x 1.71)

PRODUCT NUMBER: 8423-EXP PKG. (LBS.): 1 EACH (3.00) MIN. ORDER: 1 EACH UPC: 051138-58272
 DIMENSIONS (H x W x D) CM (IN) - 4.1 x 42.5 x 23 (1.6 x 16.7 x 9) CAPACITY PLATES (TRAYS) - 3 (2)

The 8423 patch panel provides a low-profile compact solution for termination of up to 24 optical fibers. At less than 44.4mm (1.75"), the panel fits easily into one unit of rack space. The addition of the 8423-EXP panel upgrades the unit to 48 ports in two units of rack space. The panel is mounted on glides that permit front access, drawer-like movement within the rack. The glides have built-in adjustable stops that allow the installer to select flush or mid-mounting of the panel in its returned position. The units offer networking and fiber distribution from the vault or wiring closet to the user's terminal equipment.

The front of the panel forms a shelf, providing physical protection to the connectors and routing options for the patch cords. The 8423 patch panel is designed for 19" rack mounting. With the addition of two 8423-BKT brackets, the 8423 units may be easily adapted to 23" rack mounting.



FEATURES

BENEFITS

24 ports within one unit of rack space	Conserves space
Glide mounting system	Provides easy front access to rear compartment and jumpers
Adjustable stops in glides	Allows positive stops for flush or mid-mount applications
Assortment of modular coupling plates	Many connector styles cover all applications
Pre-assembled coupling plates	Helps save time
Grommeted cable entry	Reduced rear dust entry/physical protection of cable
No tools needed to re-enter rear compartment	Rapid access
Powder-painted baked epoxy on galvanized steel construction	Rugged and durable

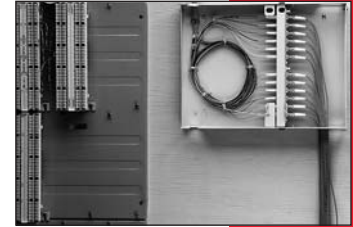
3M™ FIBER DISTRIBUTION SYSTEM 8400 SERIES

Wall Mount Fiber Optic Patch Panel 8430 Series

PRODUCT NUMBER: 8432 PKG. (LBS.): 1 EACH (9.00) MIN. ORDER: 1 EACH UPC: 051138-58056
 DIMENSIONS (H X W X D) CM (IN) - 8.12 X 38.6 X 23.36 (3.2 X 15.2 X 9.2)
 CAPACITY - 2 PLATES FOR 12 OR 16 PORTS

PRODUCT NUMBER: 8434 PKG. (LBS.): 1 EACH (10.00) MIN. ORDER: 1 EACH UPC: 051138-58057
 DIMENSIONS (H X W X D) CM (IN) - 8.12 X 38.6 X 28.44 (3.2 X 15.2 X 11.2)
 CAPACITY - 4 PLATES FOR 24 OR 32 PORTS

PRODUCT NUMBER: 8436 PKG. (LBS.): 1 EACH (15.00) MIN. ORDER: 1 EACH UPC: 051138-58058
 DIMENSIONS (H X W X D) CM (IN) - 8.12 X 38.6 X 38.1 (3.2 X 15.2 X 15.0)
 CAPACITY - 6 PLATES FOR 36 OR 48 PORTS



The 8430 patch panel series brings the features of our rack mounted 8400 system to your wall mounted building entrance and LAN applications.

Available in three sizes, these units provide excellent cable management in low to medium fiber count installations.

The 8430 series panels offer efficient use of space, as well as functionality and rugged durability. The units are secure enough for mounting in high-traffic areas and their attractive, low-profile design makes them acceptable for installation anywhere in your facility.

The cabinets have two separate lockable compartments and can be mounted to permit cable entry on either side. The unique swivel partition between the two chambers provides easy access to all couplings.

FEATURES

BENEFITS

Separate lockable compartments	Provides demarcation point between customer and service
Assortment of modular coupling plates	Available in all major connector styles
Pre-assembled coupling plates	Helps save time
Swivel partition	Easier access to couplings
Invertible housing	Allows left or right, bottom or top cable entry
Grommeted cable and jumper openings	Reduced dust entry/physical protection of jumpers
Cable ports open to outer edge	Permits pass through of express fibers
Easily removable doors	Increased accessibility during installation
Powder-painted baked epoxy on galvanized steel	Rugged and durable

ORDERING INFORMATION

OPTIONAL SPLICE TRAY AND TRAY ACCESSORIES FOR 3M™ RACK MOUNT FIBER OPTIC PATCH PANEL 8423 AND 8425

PRODUCT NUMBER	DESCRIPTION	DIMENSIONS H X W X L CM (IN.)	CAPACITY PLATES (TRAYS)	PKG. (LBS.)	MIN. ORDER	UPC 051138-
2522	Fiber splice organizer tray, small	1.6 x 10.9 x 37.8 (0.65 x 4.3 x 14.9)	12 (2)	3 each (3.00)	3 each	36522
2521-F	Fusion splice insert, 2-pack	N/A	12 double stack	12 pkgs. (0.55)	12 pkgs.	36412
2521-FL	Fibrlok™ splice inserts, 2-pack	N/A	12 double stack	12 pkgs. (0.40)	12 pkgs.	36413
2524	Splice organizer tray	N/A	24 splices	3 each (2.80)	3 each	11514
2524-A	Splice organizer tray	N/A	24 single fusion splices or 20 single fusion and 4 mass fusion	3 each (0.96)	3 each	92320*
2524-F	Fusion splice insert	N/A	-	24 each (0.40)	24 each	57150*
2524-FT	Fusion splice organizer tray	N/A	24 single fusion splices	3 each (0.96)	3 each	11513
2524-MF	Fibrlok multi-fiber splice organizer tray	N/A	3 multi-fiber splices or 4 single splices	3 each (3.00)	3 each	34352

*UPC prefix 054007-

ORDERING INFORMATION

3M™ COUPLING PLATE 8400 SERIES

PRODUCT NUMBER	DESCRIPTION	DIMENSIONS H X W X L CM (IN.)	WEIGHT GM (OZ.)	PKG. (LBS.)	MIN. ORDER	UPC 051138-
8406-TS	Plate, 6 port ST SM w/couplings	13 x 3 (5.1 x 1.2)	85.1 (3.0)	4 each (0.03)	4 each	36621
8406-TM	Plate, 6 port ST MM w/couplings	13 x 3 (5.1 x 1.2)	85.1 (3.0)	4 each (0.40)	4 each	57527
8408-TS	Plate, 8 port ST SM w/couplings	13 x 3 (5.1 x 1.2)	99.2 (3.5)	3 each (0.03)	3 each	36623
8408-TM	Plate, 8 port ST MM w/couplings	13 x 3 (5.1 x 1.2)	99.2 (3.5)	3 each (0.03)	3 each	57528
8412-TM	Plate, 12 port, ST MM w/couplings	13 x 3 (5.1 x 1.2)	127.6 (4.5)	1 each (0.03)	1 each	57414*
8412-TS	Plate, 12 port, ST SM w/couplings	13 x 3 (5.1 x 1.2)	127.6 (4.5)	1 each (0.03)	1 each	57415*
8406-CS	Plate, 6 port SC SM w/couplings	13 x 3 (5.1 x 1.2)	85.1 (3.0)	4 each (0.03)	4 each	57411
8406-CSA	Plate, 6 port SC SM angle polish w/couplings	13 x 3 (5.1 x 1.2)	85.1 (3.0)	4 each (0.03)	4 each	57434
8406-CM	Plate, 6 port SC MM w/couplings	13 x 3 (5.1 x 1.2)	99.2 (3.5)	4 each (0.03)	4 each	57410
8406-DCM	Plate, 6 port, duplex, SC MM w/couplings	13 x 3 (5.1 x 1.2)	85.1 (3.0)	4 each (0.03)	4 each	58061*
8408-CS	Plate, 8 port SC SM w/couplings	13 x 3 (5.1 x 1.2)	99.2 (3.5)	3 each (0.17)	3 each	57413
8408-CSA	Plate, 8 port SC SM angle polish w/couplings	13 x 3 (5.1 x 1.2)	99.2 (3.5)	3 each (0.03)	3 each	57435
8408-CM	Plate, 8 port SC MM w/couplings	13 x 3 (5.1 x 1.2)	99.2 (3.5)	3 each (0.03)	3 each	57412
8408-DCM	Plate, 8 port, SC MM, duplex w/couplings	13 x 3 (5.1 x 1.2)	85.1 (3.0)	3 each (0.03)	3 each	58062*
8412-DCM	Plate, 12 port, SC MM, duplex w/couplings	13 x 3 (5.1 x 1.2)	127.6 (4.5)	1 each (0.03)	1 each	57409*
8412-DCS	Plate, 12 port, SC SM, duplex w/couplings	13 x 3 (5.1 x 1.2)	127.6 (4.5)	1 each (0.03)	1 each	57418*
8406-FS	Plate, 6 port FC SM w/couplings	13 x 3 (5.1 x 1.2)	85.1 (3.0)	4 each (0.03)	4 each	36625
8406-FSA/2.15	Plate, 6 port, FC SM, angle polish w/couplings	13 x 3 (5.1 x 1.2)	85.1 (3.0)	4 each (0.03)	4 each	58038*
8408-FS	Plate, 8 port FC SM w/couplings	13 x 3 (5.1 x 1.2)	99.2 (3.5)	3 each (0.14)	3 each	36627
8412-DLM	Plate, 12 port LC, MM duplex with couplings	13 x 3 (5.1 x 1.2)	—	4 each	4 each	19048**
8412-DLS	Plate, 12 port LC, SM duplex with couplings	13 x 3 (5.1 x 1.2)	—	4 each	4 each	19049**
8499-1W	Single position blank plate	13 x 3 (5.1 x 1.2)	28.4 (1.5)	12 each (0.40)	12 each	57416

NOTE: All coupling plates loaded with specified 3M couplings.

SM=Singlemode MM=Multimode

*UPC prefix 054007-

**UPC prefix 051115-

ST Plates

SC Plates

FC Plates
LC Plates

3M Solutions Tool

The solutions tool is designed to show you the breadth of the 3M product line and allow you to drill into specific categories to identify solutions.

To use this free Internet support tool, visit: <http://www.3M.com/Telecom>.

3M, Armorcast, Crimplok, Dynatel, Fibrlok, ID3000, MS², Scotchcast, ScotchCode, Scotchfil, Scotch-Grip, Scotchkote, Scotchlite, Scotchlok, Scotchrap, SLiC, Tartan, VF-45 and Volition are trademarks of 3M Company. Scotch is a registered trademark of 3M Company.

All other trademarks used herein are the properties of their respective owners.

Many of the products in this catalog are certified as compliant with RoHS standards. For a complete and updated listing of specific RoHS-compliant products, refer to the 3M Communications Technology website at www.3M.com/ROHS.

Important Notice

Before using this product, you must evaluate it and determine if it is suitable for your intended application. You assume all risks and liability associated with such use.

Warranty; Limited Remedy; Limited Liability.

3M's product warranty is stated in its Product Literature available upon request. **3M MAKES NO OTHER WARRANTIES INCLUDING, BUT NOT LIMITED TO, ANY IMPLIED WARRANTY OF MERCHANTABILITY OR FITNESS FOR A PARTICULAR PURPOSE.** If this product is defective within the warranty period stated above, your exclusive remedy shall be, at 3M's option, to replace or repair the 3M product or refund the purchase price of the 3M product. Except where prohibited by law, 3M will not be liable for any indirect, special, incidental or consequential loss or damage arising from this 3M product, regardless of the legal theory asserted.

