

3M Science.
Applied to Life.™

**Tough. Gentle.
Brilliant.**

**Clinpro™
Prophy Paste and Angles**



Clinpro™ Prophy Paste

- Removes stains as well as NUPRO® Coarse, while being significantly less abrasive to both dentin and enamel.
- Using Clinpro prophy paste results in less gloss reduction, which means the high esthetics and luster of microfill restorations will continue to enhance your patient's smile.

Clinpro™ Prophy Angles

- Specifically designed to meet the needs of hygienists, the single-use, disposable Clinpro™ Prophy Angles are available with soft or firm non-latex* cups.

Give your patients the best of both worlds—a great polish with less abrasion.

Why choose between a coarse- or fine-grit prophy paste when you can use both? The unique perlite particles within Clinpro™ Prophy Paste are formulated to break down as you polish from a coarse to a fine grit. This unique feature provides the stain removal of a coarse paste with less abrasion to the enamel and dentin.

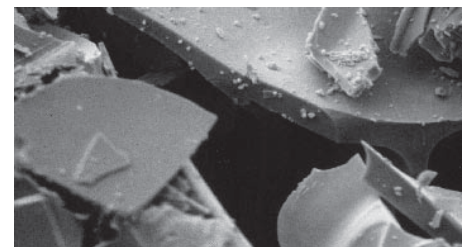
Your patients receive an excellent polish and will be delighted with the result.

Here are more ways Clinpro prophy paste will enhance your procedure:

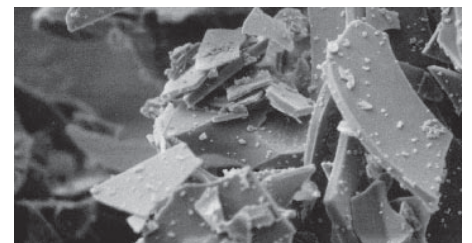
- Contains fluoride
- Refreshing mint flavor
- Available in unit dose cups



New



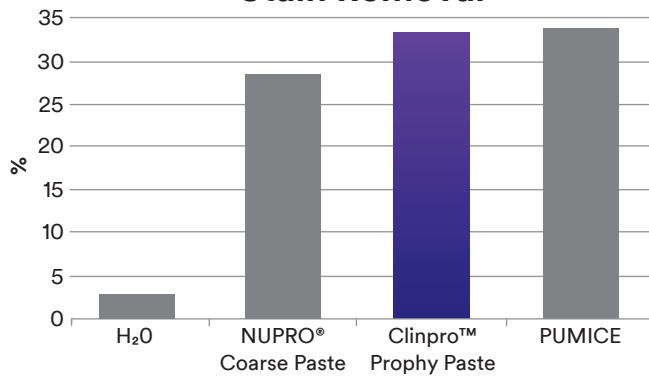
After 15 Seconds



Large cleaning particles within the paste (magnified 3000x) break into fine polishing particles in a matter of seconds.

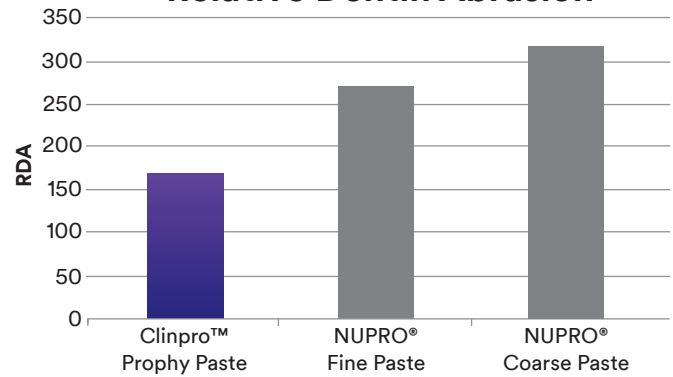
The benefits show. Compare Clinpro™ Prophy Paste to the leading pastes.

Stain Removal



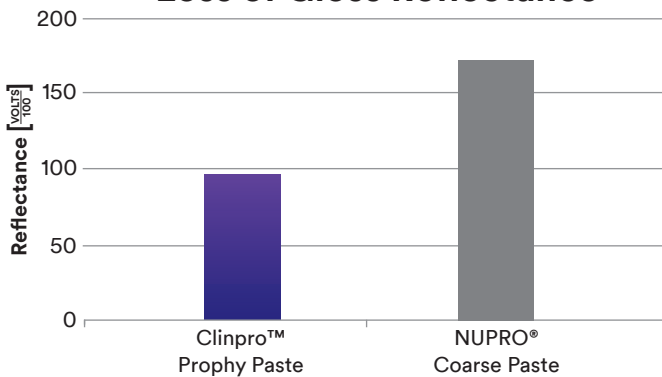
Computer Image Analysis Technique. University of Minnesota School of Dentistry MDRCBB.

Relative Dentin Abrasion



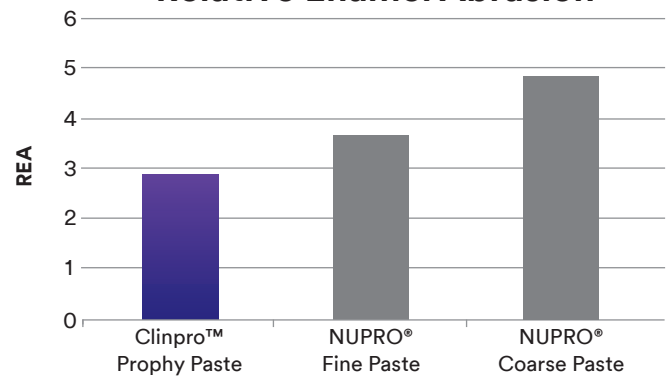
Radiotracer Method In Accordance to ADA Specifications. Indiana University Oral Health Research Institute.

Loss of Gloss Reflectance



Laser Reflectometry on 3M™ Silux Plus™ Anterior Restorative. Study by University of Minnesota School of Dentistry MDRCBB.

Relative Enamel Abrasion



Radiotracer Method In Accordance to ADA Specifications. Indiana University Oral Health Research Institute.

Ordering Information



Item #	Product Information
12611	Clinpro™ Prophy Paste, Mint Flavor 200 unit dose cups and 1 prophy ring
12600	Clinpro™ Prophy Angles, Firm Cup Includes 144 single-use disposable angles with firm non-latex* cups
12601	Clinpro™ Prophy Angles, Soft Cup Includes 144 single-use disposable angles with soft non-latex* cups
12626	Clinpro™ Sealant Introductory Kit, Syringes Contains: 2 – 1.2ml Clinpro™ Sealant Syringes; 1 – 3ml Scotchbond™ Etchant syringe; 20 sealant syringe tips (Black); 25 etchant syringe tips (Blue)
12621	Clinpro™ Sealant Introductory Kit, Bottles Contains: 2 – 6ml Clinpro™ Sealant bottles; 1 – 9ml Scotchbond Etchant bottle; 2 brush handles; 60 brush tips; 50 fiber tips; 1 mixing well with cover

* This product is made of a synthetic material and does not intentionally contain natural rubber latex

www.3M.com/PreventiveCare



3M Oral Care
2510 Conway Avenue
St. Paul, MN 55144-1000 USA
Phone 1-800-634-2249
Web 3M.com/dental

3M Canada
Post Office Box 5757
London, Ontario N6A 4T1
Canada
Phone 1-888-363-3685

3M, ESPE, Clinpro and Scotchbond are trademarks of 3M or 3M Deutschland GmbH. Used under license in Canada. NUPRO is a registered trademark of Dentsply International. Printed in USA. © 3M 2016. All rights reserved. All other trademarks are not trademarks of 3M. 70-2009-3705-3 Rev. 0416