

3M Science.
Applied to Life.™

Pink and powerful

Clinpro™ Sealant



Summary of advantages

- Color-change technology to visualize placement
- Convenient direct-delivery syringe for easy application
- Low viscosity to flow easily into pits and fissures
- Contains and releases fluoride
- Bonds to enamel

Protect and defend teeth against decay.

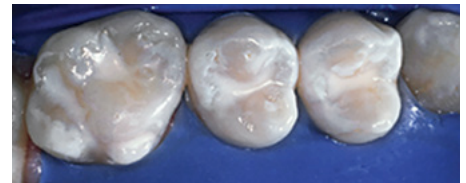
With its unique patented color-change technology, 3M™ ESPE™ Clinpro™ Sealant makes sealant application easier than ever. This fluoride-releasing sealant goes on pink and cures to a natural white. Applied with our convenient ultra-fine syringe tip, its low-viscosity formula flows easily into pits and fissures, yet is viscous enough to stay in place during application. Clinpro sealant requires fewer occlusal adjustments than a filled sealant and provides powerful, long-lasting protection against caries.*

Backed by over 15 years of clinical success, 3M is a market leader in preventive products. We are committed to providing the most advanced and patient-friendly solutions to dental professionals and their patients.

Before



After



Photography by Dr. Chris Bryant



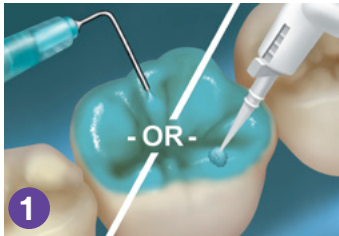
* The American Dental Association (ADA) and Caries Management by Risk Assessment (CAMBRA) recommend sealants as an aid to prevent caries.

Easy-to-use technique

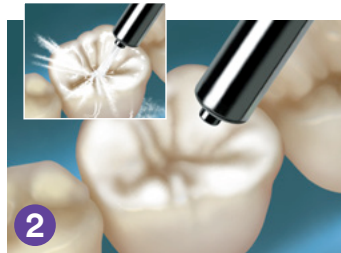
Clinpro™ Sealant offers color-change technology for ultimate placement control.

Tooth preparation: Thoroughly clean teeth to remove plaque and debris from enamel surfaces and fissures. Rinse thoroughly with water and dry.

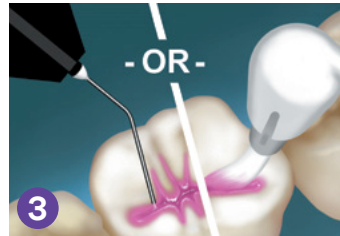
Note: Do not use any cleaning medium that contains oils or fluoride. Prepare adhesive according to dispensing instructions.



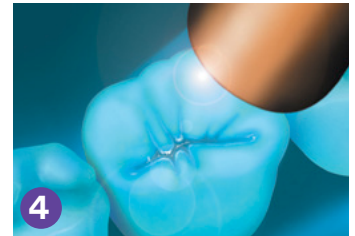
1 Apply etchant to all enamel surfaces to be sealed. (Note: Adper™ Prompt™ Self-Etch Adhesive may be used instead of the acid-etch technique when placing Clinpro™ Sealant.)



2 Thoroughly rinse teeth to remove etchant, then dry the etched surfaces.



3 Apply Clinpro™ Sealant into pits and fissures.



4 Light cure the sealant with a halogen, LED or plasma light for the amount of time specified to cure the sealant.



Ordering Information

Item #	Product Information
12626	Clinpro™ Sealant Introductory Kit—Syringes Kit includes: 2 – 1.2ml Clinpro Sealant syringes; 1 – 3ml Scotchbond™ Etchant syringe; 20 sealant syringe tips (Black); 25 etchant syringe tips (Blue)
12627	Clinpro™ Sealant Refill—Syringes Includes: 1 – 1.2ml Clinpro Sealant syringe; 10 sealant syringe tips (Black)
12621	Clinpro™ Sealant Introductory Kit—Bottles Kit includes: 2 – 6ml Clinpro Sealant bottles; 1 – 9ml Scotchbond™ Etchant bottle; 2 brush handles; 60 brush tips; 50 fiber tips; 1 mixing well with cover
12622	Clinpro™ Sealant Refill—Bottle Includes: 1 – 6ml Clinpro Sealant bottle
12626TP	Clinpro™ Sealant and Adper™ Prompt™ Trial Kit Kit includes: 1 – 1.2ml Clinpro Sealant syringe; 10 sealant syringe tips (Black); 20 Adper™ Prompt™ L-Pop™ Applicators*

*MSDS available. Call 1-800-634-2249



3M Oral Care
2510 Conway Avenue
St. Paul, MN 55144-1000 USA
Phone 1-800-634-2249
Web 3M.com/dental

3M Canada
Post Office Box 5757
London, Ontario N6A 4T1
Canada
Phone 1-888-363-3685

www.3M.com/PreventiveCare

3M, ESPE, Clinpro, Adper, L-Pop, Prompt and Scotchbond are trademarks of 3M or 3M Deutschland GmbH. Used under license in Canada. Printed in USA.
© 3M 2016. All rights reserved.
70-2013-0468-3 Rev. 0416