

Hi There. Let's Install Your 3M Window Film!



Install Video

Read through the instructions and watch the installation video before beginning. You can install your window film in 3 major steps, as shown below. Expect 30-60 minutes per window.

Included in Install Kit:



Additional Supplies You May Need:



Step 1: Prep | Thoroughly clean your window and measure, cut, and prepare your film.

Make sure the window is easy to access, completely within reach, and the area around is clear. Remove all curtains and blinds before beginning. Close all vents in the room to avoid dust while working.

1A: Gather supplies

Bring together the install kit (squeegee, utility knife, spray bottle, Application Concentrate, microfiber cloth, and scrub pad) and a drop cloth or towel, Scotch® Tape, tape measure, scissors, and a permanent marker. You may need a step stool to reach the top of the window.

1B: Prepare Application Solution

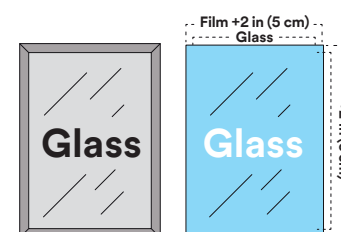
Fill spray bottle to the neck with water, leaving room to mix (about 8 fl oz / 236 ml). Add the Application Concentrate (one sachet per bottle). Replace the spray top and gently mix.

1C: Thoroughly clean window and frame

Clean your window and frame thoroughly with Application Solution and the scrub pad. Use the microfiber cloth to wipe down the window and frame, paying attention to edges and corners. Ensure all residue, dust and hair is removed from the window and frame.

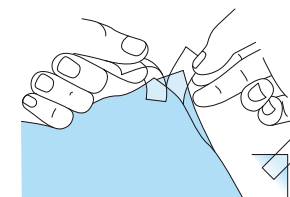
1D: Measure window & cut film

Measure the length and width of the glass. Cut your film to be approximately 2 in (≈5 cm) larger, both lengthwise and widthwise.



1E: Add tape to corners

Using two pieces of Scotch® Tape, select one top corner of the film and place one piece on each side of the film (see picture) and press the tape down onto the film.



Step 2: Apply | Remove the liner, flip the film, and reapply to your window.

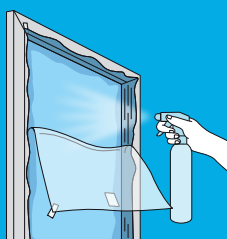
2A: Spray window with Application Solution and place the film on the window—so the liner side faces you

In this step, you will use the window as an assistant—it's a clean and handy place to set your film while you peel off the liner. Start by wetting the clean window generously with Application Solution, then place the film onto the wet window with the liner side facing you.

2B: Remove liner and spray adhesive side with Application Solution

Slowly peel a small section of the liner away from the film—using the tape to get started. Have your installation partner hold the top of the film to keep it from falling away from the window. Spray Application Solution on each of your hands and the exposed film, then slowly continue to fully remove the liner. Stop 3-4 times to spray the freshly exposed adhesive with Application Solution.

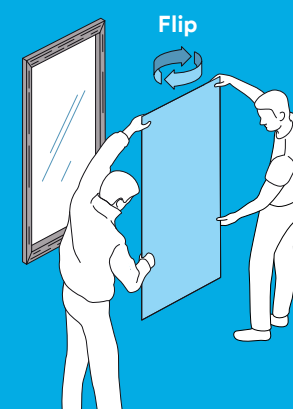
Spraying solution keeps the film from sticking to itself.



! Crucial Step!

2C: Flip the film

Each person should grab one of the top corners of the film with one hand. With the other hand, grab somewhere towards the bottom of the film. **Rotate positions** so the adhesive side of the film (the side you removed the liner from) is now facing the window. Place the film onto the glass, gently applying it to the wet window. Make sure the film completely overhangs the glass on all 4 edges.



Step 3: Finish | Spray film, squeegee out air bubbles, and trim away excess film.

Spraying the outside of the film with Application Solution helps the squeegee glide smoothly and prevents creasing the film.

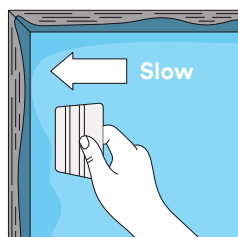
3A: Prepare the surface for the squeegee

Using your fingers, remove any large bubbles by gently pushing them from the center to an edge. Make sure the film is mostly laying flat on the glass. Generously spray the entire surface with Application Solution.

3B: Adhere film to the window with squeegee

Squeegee the film. Start by creating a T-shape; a horizontal line at the top of the window will hold the film in place, and a vertical line down the center helps you begin to adhere film to the glass. Work from the center to each edge, using pressure, to remove the bulk of the Application Solution. Stop the squeegee about 1/4 in (≈6 mm) from the edges to make trimming easier.

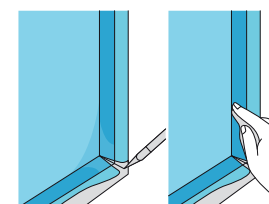
You will finish edges and corners in Step 3C and 3D.



3C: Trim the excess film

Start by fitting each corner. Position the point of your utility knife in the corner of the glass, then make a diagonal cut to the outer edge of the film. Repeat for the remaining 3 corners. Trim the excess film from each edge. Make sure to secure the corner of the film with your finger when removing excess film.

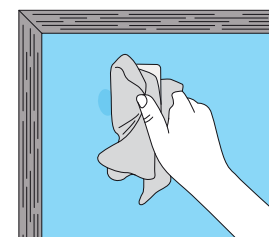
Tip: Use the squeegee as a straight edge to guide the blade along the edge of the glass.



3D: Complete the install

Cover the squeegee with a microfiber cloth to assist with removing all of the Application Solution.

Squeegee, starting with the T-shape as before, this time going **all the way to the edges and applying firm pressure** to push out all the bubbles and wicking up the excess Application Solution. Very small bubbles will dry in a day or two.



Congratulations!

You did it! By following the above steps, you have a successfully installed pro grade window film to keep your home comfortable for years to come!

CAUTION: Failure to follow instructions may result in personal injury or property damage. Window films are not bulletproof and are not intended to prevent intruders. Heat Risk: While some window films can block a portion of UV radiation, their effectiveness in preventing skin cancer has not been evaluated. Equipment Misuse Risk: Blades are sharp. Handle them with caution. Always remain vigilant & focused when using a cutter or knife. Use care and control when installing film. Keep out of the reach of children.