

**3M** Science.  
Applied to Life.™

# Purpose Driven Performance

Your partner  
in progress.

3M Sustainable Packaging  
Solutions





# A more responsible future for the packaging industry.

Consumers, government regulators, and corporations are all demanding more eco-friendly packaging. 3M is here to help you meet these challenges and deliver what your customers are asking for without sacrificing the performance you need and deserve.

## Step by step.

We are with you on every step of your journey toward sustainability. Here are just a few of the ways our packaging solutions help you meet your goals:



We continue to develop packaging and products that are **reusable, renewable, recyclable**, or made with more recycled material.



We're creating solutions that can be **recycled after use** rather than discarded.



We offer packaging solutions that do more with less material, helping **reduce the environmental footprint** of the packaging industry.



Our manufacturing team is working to make production processes more **energy-efficient** and increase our usage of **renewable energy**.





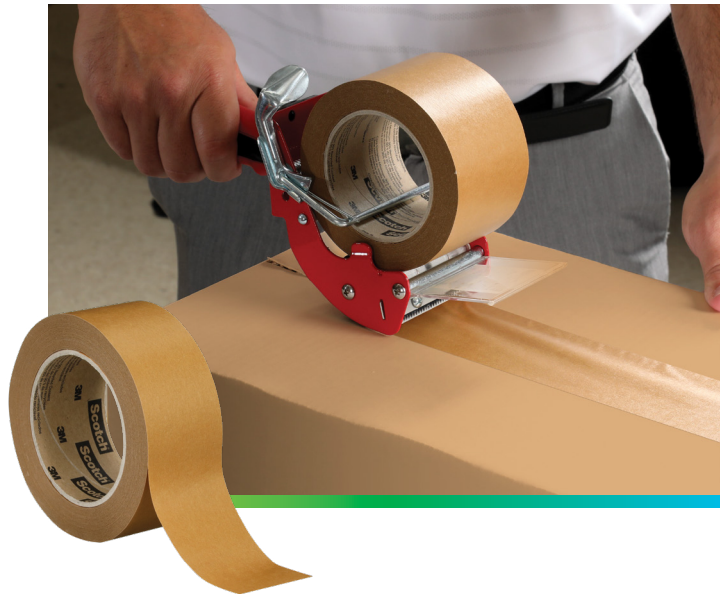
# Innovation and progress — without compromising quality or efficiency.

The leader you have always trusted to help you pack and ship with confidence is again leading the way — bringing you solutions that can help you meet your high requirements for product performance while also meeting your company's environmental standards. At 3M, we are among the first to offer packaging solutions that help meet both sustainability and automation goals.



## 3M™ Scotchpro™ Box Sealing Tape 372HQ-R60

- Use a polypropylene film with 60% recycled resin content, promoting resource recycling.
- Maintain high holding power even in high humidity conditions and possesses superior impact resistance, even when made with recycled materials.
- The unwinding force is light, ensuring no strain for the operator and enabling smooth sealing, even with machine application.
- Available in clear, standard print, and custom print versions. Add your company logo or message to every package to make your message stick with your customers.

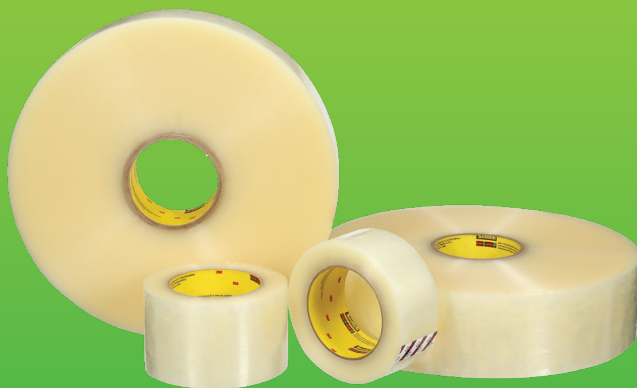


## Scotch® Performance Paper Box Sealing Tape 570

- Recycle-compatible when left on the box according to Western Michigan University (WMU) Recyclability testing.
- Solvent-free hot melt adhesive and strong backing made from responsibly sourced paper.
- Reliably adheres to a variety of surfaces, including cartons with high levels of recycled content.
- Compatible with manual dispensers and automated case sealers.
- Ideal for palletized and lightweight, single-parcel shipments.



## Other solutions to help reduce plastic consumption.



### Scotch® Plus+ Tapes

Use less tape and still get excellent sealing results on substrates with up to 100% recycled corrugate.

- Performance-grade adhesive with high tack and a quick grab.
- Compatible with 3M-Matic™ case-sealing equipment.



### 3M™ Carry Handles

An alternative to large plastic bags that can reduce single-use plastic and plastic waste by 74%.\*

- Designed for convenience, making it easier to carry bulky packages.
- Excellent adhesion to a variety of surfaces.

\*Based on the weight of a large plastic bag of 17.5 grams vs. 3M™ Carry Handle weight of 4.5 grams.





# Trust 3M for science-based innovation.

The 3M Strategic Sustainability Framework, combined with our expertise in material science, provides a strong foundation for us to lead the way toward a more environmentally conscious packaging industry. As corporate and government goals evolve, we're with you, offering product solutions that help meet your ever-changing needs.

3M is committed to investing \$1 billion in sustainability efforts over the next 20 years and embedding environmental responsibility into every new product.



## 100%

sustainability value  
commitment for new products

## Notable achievements to date.\*

## 69.8M



pounds of plastic reduced

## 10.7%



reduction in manufacturing waste

## 45.9%



of sites achieved zero landfill

## 135M



metric tons of CO<sub>2</sub>-equivalent  
emissions avoided

\*2023 data.

Learn more at [3M.com/sustainability](https://www.3m.com/sustainability).





# Your partner in progress.

Learn more at  
**3M.com/sustainable-  
packaging.**



**Product Selection and Use:** Many factors beyond 3M's control and uniquely within user's knowledge and control can affect the use and performance of a 3M product in a particular application. As a result, customer is solely responsible for evaluating the product and determining whether it is appropriate and suitable for customer's application, including conducting a workplace hazard assessment and reviewing all applicable regulations and standards (e.g., OSHA, ANSI, etc.). Failure to properly evaluate, select, and use a 3M product and appropriate safety products, or to meet all applicable safety regulations, may result in injury, sickness, death, and/or harm to property.

**Warranty, Limited Remedy, and Disclaimer:** Unless a different warranty is specifically stated on the applicable 3M product packaging or product literature (in which case such warranty governs), 3M warrants that each 3M product meets the applicable 3M product specification at the time 3M ships the product. 3M MAKES NO OTHER WARRANTIES OR CONDITIONS, EXPRESS OR IMPLIED, INCLUDING, BUT NOT LIMITED TO, ANY IMPLIED WARRANTY OR CONDITION OF MERCHANTABILITY, FITNESS FOR A PARTICULAR PURPOSE, OR ARISING OUT OF A COURSE OF DEALING, CUSTOM, OR USAGE OF TRADE. If a 3M product does not conform to this warranty, then the sole and exclusive remedy is, at 3M's option, replacement of the 3M product or refund of the purchase price.

**Limitation of Liability:** Except for the limited remedy stated above, and except to the extent prohibited by law, 3M will not be liable for any loss or damage arising from or related to the 3M product, whether direct, indirect, special, incidental, or consequential (including, but not limited to, lost profits or business opportunity), regardless of the legal or equitable theory asserted, including, but not limited to, warranty, contract, negligence, or strict liability.



**3M New Zealand Ltd**  
**Safety & Industrial Business Group**  
94 Apollo Drive,  
Rosedale, Auckland 0632  
Phone 0800252 627  
Web [www.3M.co.nz/packaging](http://www.3M.co.nz/packaging)

3M Scotch Scotchpro is a  
trademark of 3M Company.  
© 3M 2025. All rights reserved.