

Immediate Action Required



Products:

Select 3M DBI-SALA® Sealed-Blok™ Self-Retracting Lifelines

Select 3M DBI-SALA® Sealed-Blok™ Brake Assemblies



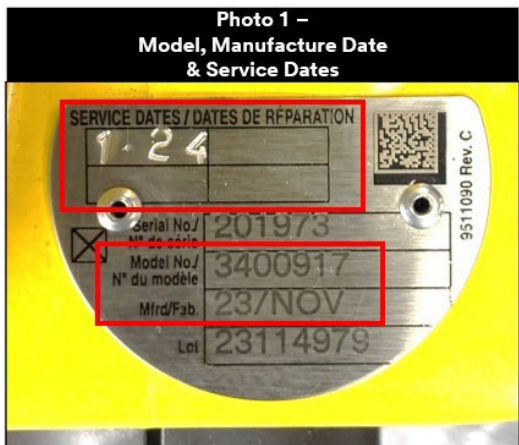
3M is issuing this “Stop Use and Recall / Replace or Remediate” notice for select 3M DBI-SALA® Sealed-Blok™ Self-Retracting Lifelines and Brake Assemblies



As part of 3M’s ongoing commitment to delivering high quality products, we are notifying our customers of the following information related to select 3M DBI-SALA® Sealed-Blok™ Self-Retracting Lifelines (SRLs). 3M Personal Safety Division has identified an aging effect that may impact the performance of the 3M DBI-SALA® Sealed-Blok™ SRLs produced from January 2022 to October 2024. Additionally, any devices repaired by 3M, or an Authorized Service Center (ASC), during this timeframe may also be affected. Through laboratory testing, 3M has determined that in the event of a fall, these devices may not lock up as designed **which could expose the worker to serious injury or death. There have been no reports of injuries associated with this issue.** Affected sizes are all variants of the 85 ft (~26M), 130 ft (~40M), and 55 ft (~17M) self-retracting lifelines, see appendix for the full list of models impacted by this stop use notice

Due to this, we are sending out this Stop Use and Recall / Replace or Remediate Notice, so the select 3M DBI-SALA® Sealed-Blok™ Self-Retracting Lifelines are removed from service immediately. 3M is working towards having replacement product and remediation solutions available soon. Failure to read and follow all instructions associated with this Notice may result in **serious injury or death** of a user. Instructions for appropriate next steps are below.

Users/Owners:



Sealed-Blok™ SRLs

Step 1a. Locate the model number on the metal identification label (see Photo 1). If your device model number is listed in Appendix B, proceed to **step 2a**. If the model number is not included in Appendix B, it is not part of the notice and can be returned to service.

Step 2a. Locate the manufacturing and service date records on the metal identification label. If the device was manufactured OR serviced from January 2022 to October 2024, go to **step 3a**. If the device was not manufactured or serviced during the affected timeframe, it is not part of the notice and can be returned to service. (See Appendix A for remediation mark on label).

Step 3a. To begin the process for addressing affected device(s), please go to www.3M.com/SealedBlokRecall; www.3m.com.au/sealblokrecall; www.3m.co.uk/sealblokrecall; www.3m.com.sg/sealblokrecall; www.3mnz.co.nz/sealblokrecall; www.3m.ca/sealblokrecall; www.3m.co.za/sealblokrecall; or www.3mae.ae/sealblokrecall and complete the intake form which will help you to determine what options are available for your situation. Not all replacement or remediation options are immediately available at the time of this communication.

Distributors:

Upon receipt of this Notice, please contact your 3M Fall Specialist for a listing of the impacted products sold to you. If you have any of the impacted 3M DBI-SALA® Sealed-Blok™ Self-Retracting Lifelines in stock, please contact 3M Customer Service to setup a Return Material Authorization (RMA) and receive product credit or replacement. Please immediately forward this Notice to any of your customers who have purchased impacted products from you and provide any assistance requested by your customers to complete the process.

Authorized or Direct Service Centers:

Immediately stop using your brake assemblies. To identify if your product is affected, follow the steps listed below:



Brake Assemblies:

Step 1b. Regarding brake assemblies, locate the model number on the label (see Photo 2). If your brake assembly model number is listed in the table below, proceed to **step 2b**. If the model number is not included, it is not part of the notice and can be returned to service.

3M ID	Model	Description
70007462271	3900221	3M™ Self-Retracting Lifeline Brake Assembly 3900221
70007467783	3900223	3M™ Self-Retracting Lifeline Brake Assembly 3900223

Step 2b. Locate the manufacturing date record on the brake assembly label. If the brake assembly was manufactured from January 2022 to October 2024, go to **step 3b**. If the brake assembly was not manufactured during the affected timeframe, it is not part of the notice and can be returned to inventory for use in services/repairs.

Step 3b. Choose one of the following options to address your affected brake assembly inventory:

- **Sort option:** Use Service Bulletin 65 with provided go/no-go gauge part number 9600125 to sort brake assemblies. Any passing the go/no-go check should get green checkmark on the bag and be returned to inventory. Any not passing the go/no-go check should be marked with a red X to be returned to 3M for credit
- **Return all option:** If you will not sort brake assemblies and prefer to return them to 3M, please contact 3M Customer Service to setup a Return Material Authorization (RMA) and receive product credit or replacement. Not all replacement or remediation options are immediately available at the time of this communication.

Service Centers:

Upon receipt of this Notice, please contact your 3M Fall Specialist for a listing of the impacted products sold to you. Please immediately forward this Notice to any of your customers who have purchased repair services that included impacted products from you and provide any assistance requested by your customers to complete the process.

Appendix A – Additional Sealed-Blok™ Information

3M DBI-SALA® Sealed-Blok™ Self-Retracting Lifelines that have gone through remediation will have a “0” marked on the metal identification label near Lot or Manufactured Date (see image).



Generation 1 Sealed-Blok™ Self-Retracting Lifelines, produced prior to 2015, have a different housing (teardrop shape). They are **not** part of the notice and can continue to be used and repaired as directed.



Appendix B - Affected 3M™ DBI-SALA® Sealed-Blok™ Self-Retracting Lifelines and Associated Tripod Systems Part List

3M ID	Model Number	Description
70007451654	3400862	3M™ DBI-SALA® Sealed-Blok™ Self-Retracting Lifeline 3400862, Stainless Steel Cable, 85 ft
70007460101	3400965	3M™ DBI-SALA® Sealed-Blok™ Self-Retracting Lifeline 3400965, Galvanized Cable, 130 ft
70804203514	3400169	3400169 SRL 85FT SS S40 420LB CAP OSHA
70007452058	3400967	3M™ DBI-SALA® Sealed-Blok™ Self-Retracting Lifeline 3400967, Stainless Steel Cable, 130 ft
70804203530	3400172	3400172 SRL 130FT SS S40 420LB CAP OSHA
70007459780	3400867	3M™ DBI-SALA® Sealed-Blok™ Self-Retracting Lifeline 3400867, Stainless Steel Cable, 85 ft
70007459731	3400860	3M™ DBI-SALA® Sealed-Blok™ Self-Retracting Lifeline 3400860, Galvanized Cable, 85 ft
70007459830	3400881	3M™ DBI-SALA® Sealed-Blok™ 3-Way Retrieval Self-Retracting Lifeline 3400881, Stainless Steel Cable, 85 ft
70007452082	3400972	3M™ DBI-SALA® Sealed-Blok™ Self-Retracting Lifeline 3400972, Stainless Steel Cable, 130 ft
70804504572	3400895B	3M™ DBI-SALA® Sealed-Blok™ 3-Way Retrieval Self-Retracting Lifeline 3400895B, Stainless Steel Cable, 25.6 m
70007451662	3400871	3M™ DBI-SALA® Sealed-Blok™ 3-Way Retrieval Self-Retracting Lifeline with Bracket 3400871, Galvanized Cable, 85 ft

70007452157	3400986	3M™ DBI-SALA® Sealed-Blok™ 3-Way Retrieval Self-Retracting Lifeline 3400986, Stainless Steel Cable, 130 ft
70007452074	3400971	3M™ DBI-SALA® Sealed-Blok™ Self-Retracting Lifeline 3400971, Galvanized Cable, 130 ft
70007451738	3400882	3M™ DBI-SALA® Sealed-Blok™ 3-Way Retrieval Self-Retracting Lifeline with Bracket 3400882, Stainless Steel Cable, 85 ft
70007459814	3400874	3M™ DBI-SALA® Sealed-Blok™ 3-Way Retrieval Self-Retracting Lifeline 3400874, Stainless Steel Cable, 85 ft
70804504614	3400973B	3M™ DBI-SALA® Sealed-Blok™ 3 Way- Self-Retracting Lifeline 3400973B, Stainless Steel Cable, 39.6 m3M™ DBI-SALA® Sealed-BI
70007459756	3400863	3M™ DBI-SALA® Sealed-Blok™ Self-Retracting Lifeline 3400863, Galvanized Cable, 85 ft
70007459822	3400876	3M™ DBI-SALA® Sealed-Blok™ 3-Way Retrieval Self-Retracting Lifeline with Bracket 3400876, Galvanized Cable, 85 ft
70007460127	3400968	3M™ DBI-SALA® Sealed-Blok™ Self-Retracting Lifeline 3400968, Galvanized Cable, 130 ft
70804203548	3400171	3400171 SRL 130FT SS RTRVL BRKT S40 OSHA
70007459848	3400883	3M™ DBI-SALA® Sealed-Blok™ 3-Way Retrieval Self-Retracting Lifeline with Bracket 3400883, Stainless Steel Cable, 85 ft
70007452215	3400997	3M™ DBI-SALA® Sealed-Blok™ RSQ Self-Retracting Lifeline 3400997, Stainless Steel Cable, 130 ft
70804203506	3400168	3400168 SRL 85FT SS RTRVL BRKT S40 420LB
70804203498	3400167	3400167 SRL 85FT SS RTRVL S40 420LB OSHA
70007452132	3400981	3M™ DBI-SALA® Sealed-Blok™ 3-Way Retrieval Self-Retracting Lifeline with Bracket 3400981, Galvanized Cable, 130 ft
70007452090	3400976	3M™ DBI-SALA® Sealed-Blok™ 3-Way Retrieval Self-Retracting Lifeline with Bracket 3400976, Galvanized Cable, 130 ft
70007459954	3400917	3M™ DBI-SALA® Sealed-Blok™ RSQ 3-Way Retrieval Self-Retracting Lifeline 3400917, Stainless Steel Cable, 85 ft
70804504622	3400989B	3M™ DBI-SALA® Sealed-Blok™ 3-Way Retrieval Self-Retracting Lifeline 3400989B, Stainless Steel Cable, 39.6 m
70007460176	3400987	3M™ DBI-SALA® Sealed-Blok™ 3-Way Retrieval Self-Retracting Lifeline with Bracket 3400987, Stainless Steel Cable, 130 ft
70007451720	3400880	3M™ DBI-SALA® Sealed-Blok™ 3-Way Retrieval Self-Retracting Lifeline 3400880, Galvanized Cable, 85 ft
70007460143	3400975	3M™ DBI-SALA® Sealed-Blok™ 3-Way Retrieval Self-Retracting Lifeline 3400975, Galvanized Cable, 130 ft
70007459640	3400844	3M™ DBI-SALA® Sealed-Blok™ 3-Way Retrieval Self-Retracting Lifeline with Bracket 3400844, Rope, 55 ft
70007459871	3400892	3M™ DBI-SALA® Sealed-Blok™ RSQ Self-Retracting Lifeline 3400917, Stainless Steel Cable, 85 ft
70804203522	3400170	3400170 SRL 130FT SS RTRVL S40 420LBOSHA
70007452116	3400979	3M™ DBI-SALA® Sealed-Blok™ 3-Way Retrieval Self-Retracting Lifeline 3400979, Stainless Steel Cable, 130 ft
70007459798	3400870	3M™ DBI-SALA® Sealed-Blok™ 3-Way Retrieval Self-Retracting Lifeline 3400870, Galvanized Cable, 85 ft
70007459772	3400866	3M™ DBI-SALA® Sealed-Blok™ Self-Retracting Lifeline 3400866, Galvanized Cable, 85 ft

70007452165	3400988	3M™ DBI-SALA® Sealed-Blok™ 3-Way Retrieval Self-Retracting Lifeline with Bracket 3400988, Stainless Steel Cable, 130 ft
70007451696	3400875	3M™ DBI-SALA® Sealed-Blok™ 3-Way Retrieval Self-Retracting Lifeline 3400875, Galvanized Cable, 85 ft
70007459764	3400865	3M™ DBI-SALA® Sealed-Blok™ Self-Retracting Lifeline 3400865, Stainless Steel Cable, 85 ft
70007452140	3400984	3M™ DBI-SALA® Sealed-Blok™ 3-Way Retrieval Self-Retracting Lifeline 3400984, Stainless Steel Cable, 130 ft
70007450730	3400843	3M™ DBI-SALA® Sealed-Blok™ 3-Way Retrieval Self-Retracting Lifeline with Bracket 3400843, Rope, 55 ft
70007459863	3400886	3M™ DBI-SALA® Sealed-Blok™ RSQ Self-Retracting Lifeline 3400886, Stainless Steel Cable, 85 ft
70007451753	3400887	3M™ DBI-SALA® Sealed-Blok™ RSQ Self-Retracting Lifeline 3400887, Galvanized Cable, 85 ft
70007451712	3400879	3M™ DBI-SALA® Sealed-Blok™ 3-Way Retrieval Self-Retracting Lifeline 3400879, Stainless Steel Cable, 85 ft
70007452181	3400991	3M™ DBI-SALA® Sealed-Blok™ RSQ Self-Retracting Lifeline 3400991, Stainless Steel Cable, 130 ft
70804495110	3400813	3M™ DBI-SALA® Sealed-Blok™ Self-Retracting Lifeline 3400813, Stainless Steel Cable, 25 m
70007451688	3400874B	3M™ DBI-SALA® Sealed-Blok™ 3-Way Retrieval Self-Retracting Lifeline 3400874B, Stainless Steel Cable, 85 ft
70007451837	3400913	3M™ DBI-SALA® Sealed-Blok™ RSQ 3-Way Retrieval Self-Retracting Lifeline 3400913, Galvanized Cable, 85 ft
70007460135	3400970	3M™ DBI-SALA® Sealed-Blok™ Self-Retracting Lifeline 3400970, Stainless Steel Cable, 130 ft
70007490017	8301037	3M™ DBI-SALA® Confined Space Aluminum Tripod with 3-Way SRL 8301037, 9 ft High, 85 ft Stainless Steel Cable
70007451829	3400912	3M™ DBI-SALA® Sealed-Blok™ RSQ 3-Way Retrieval Self-Retracting Lifeline 3400912, Stainless Steel Cable, 85 ft
70804495235	3400819	3M™ DBI-SALA® Sealed-Blok™ RSQ Self-Retracting Lifeline 3400819, Stainless Steel Cable, 40 m
70804108440	3400151	3400151 SRL 55FT RP RTRVL BRKT S40 ANSI
70007490066	8301049	3M™ DBI-SALA® Confined Space Aluminum Tripod with 3-Way SRL 8301049, 9 ft High, 85 ft Galvanized Cable
70804516899	3400897	3M™ DBI-SALA® Sealed-Blok™ 3-Way Retrieval Self-Retracting Lifeline 3400897, Galvanized Cable, 25 m
70007460150	3400980	3M™ DBI-SALA® Sealed-Blok™ 3-Way Retrieval Self-Retracting Lifeline 3400980, Galvanized Cable, 130 ft
70007459855	3400885	3M™ DBI-SALA® Sealed-Blok™ RSQ Self-Retracting Lifeline 3400885, Galvanized Cable, 85 ft
70007451761	3400889	3M™ DBI-SALA® Sealed-Blok™ RSQ Self-Retracting Lifeline 3400889, Stainless Steel Cable, 85 ft
70007460168	3400985	3M™ DBI-SALA® Sealed-Blok™ 3-Way Retrieval Self-Retracting Lifeline 3400985, Galvanized Cable, 130 ft
70007459947	3400915	3M™ DBI-SALA® Sealed-Blok™ RSQ 3-Way Retrieval Self-Retracting Lifeline 3400915, Stainless Steel Cable, 85 ft
70007452173	3400990	3M™ DBI-SALA® Sealed-Blok™ RSQ Self-Retracting Lifeline 3400990, Galvanized Cable, 130 ft

70804516949	3400999	3M™ DBI-SALA® Sealed-Blok™ 3-Way Retrieval Self-Retracting Lifeline 3400999, Stainless Steel Cable, 40 m
70804516907	3400898	3M™ DBI-SALA® Sealed-Blok™ 3-Way Retrieval Self-Retracting Lifeline 3400898, Stainless Steel Cable, 25 m
70804484882	8301039	3M™ DBI-SALA® Confined Space Aluminum Tripod with 3-Way SRL 8301039, 9 ft High, 130 ft Stainless Steel Cable
70007451811	3400910	3M™ DBI-SALA® Sealed-Blok™ RSQ 3-Way Retrieval Self-Retracting Lifeline 3400910, Galvanized Cable, 85 ft
70804108291	3400136	3400136 SRL 85FT GA S37 420LB ANSI
70804108317	3400138	3400138 SRL 130FT GA S37 420LB ANSI
70804108325	3400139	3400139 SRL 130FT SS S40 420LB ANSI
70804108457	3400152	3400152 SRL 85FT GA RTRVL S37 ANSI
70804108465	3400153	3400153 SRL 85FT GA RTRVL BRKT S37 ANSI
70804108507	3400157	3400157 SRL 130FT GA RTRVL BRKT S37 ANSI
70804108515	3400158	3400158 SRL 130FT SS RTRVL S40 420LBANSI
70804108572	3400164	3400164 SRL 130FT SS RSQ S40 END ANSI
70007459467	3400659	3400659 SBLOK 42M SS S40
70007460119	3400965B	3400965B SBLOK 130FT GA S37 420LB CA
70804571035	3400969	3400969 SBLOK 130FT SS S37 420LB CSA
70804506692	3400975B	3400975B SBLOK 130FT GA S37 420LB RTRVL
70804556333	3400978	3400978 SBLOK 130FT SS S37 420LB RTRVL
No 3M ID	3400982	3400982 SBLOK 130FT SS S37 420 RTRVL CSA
No 3M ID	3400983	3400983 SBLOK 130FT SS S37 420 RTRVL CSA
No 3M ID	3400993	3400993 SBLOK 130FT SS S37 RSQ
70007452207	3400995	3400995 SBLOK 130FT SS S37 RSQ CSA
70804571043	3400996	3400996 SBLOK RSQ GA 40M S37 C16 CE
No 3M ID	3401004B	3401004B SBLOK 130FT SS S40 RTRVL RSQ CA
No 3M ID	3401006	3401006 SBLOK 130FT SS S37 RTRVL RSQ CSA
70804506932	3401007	3401007 SBLOK 130FT SS S40 RTRVL RSQ CSA
No 3M ID	3401008	3401008 SBLOK 130FT GA S37 RTRVL RSQ CE
No 3M ID	3401009	3401009 SBLOK 130FT SS S40 RTRVL RSQ CE
70007489977	8301032	3M™ DBI-SALA® Confined Space Aluminum Tripod with 3-Way SRL 8301032, 7 ft High, 85 ft Galvanized Cable
70007489985	8301033	3M™ DBI-SALA® Confined Space Aluminum Tripod with 3-Way SRL 8301033, 7 ft High, 85 ft Stainless Steel Cable
70007489993	8301034	3M™ DBI-SALA® Confined Space Aluminum Tripod with 3-Way SRL 8301034, 7 ft High, 130 ft Galvanized Cable
70007490025	8301038	3M™ DBI-SALA® Confined Space Aluminum Tripod with 3-Way SRL 8301038, 9 ft High, 130 ft Galvanized Cable
70007490058	8301048	3M™ DBI-SALA® Confined Space Aluminum Tripod with 3-Way SRL 8301048, 7 ft High, 130 ft Stainless Steel Cable
No 3M ID	3400881/A	3M™ DBI-SALA® Sealed-Blok™ 3-Way Retrieval Self-Retracting Lifeline 3400881/A, Stainless Steel Cable, 85 ft
70007452108	3400977	3M™ DBI-SALA® Sealed-Blok™ 3-Way Retrieval Self-Retracting Lifeline 3400977, Stainless Steel Cable, 130 ft

70007452124	3400979B	3M™ DBI-SALA® Sealed-Blok™ 3-Way Retrieval Self-Retracting Lifeline 3400979B, Stainless Steel Cable, 130 ft
70804516931	3400998	3M™ DBI-SALA® Sealed-Blok™ 3-Way Retrieval Self-Retracting Lifeline 3400998, Galvanized Cable, 40 m
70007451670	3400873	3M™ DBI-SALA® Sealed-Blok™ 3-Way Retrieval Self-Retracting Lifeline with Bracket 3400873, Stainless Steel Cable, 85 ft
70007459939	3400911	3M™ DBI-SALA® Sealed-Blok™ RSQ 3-Way Retrieval Self-Retracting Lifeline 3400911, Galvanized Cable, 85 ft
70804521493	3400916	3M™ DBI-SALA® Sealed-Blok™ RSQ 3-Way Retrieval Self-Retracting Lifeline 3400916, Galvanized Cable, 25 m
70007460192	3401002	3M™ DBI-SALA® Sealed-Blok™ RSQ 3-Way Retrieval Self-Retracting Lifeline 3401002, Galvanized Cable, 130 ft
70804439183	3401003	3M™ DBI-SALA® Sealed-Blok™ RSQ 3-Way Retrieval Self-Retracting Lifeline 3401003, Stainless Steel Cable, 130 ft
70007460200	3401004	3M™ DBI-SALA® Sealed-Blok™ RSQ 3-Way Retrieval Self-Retracting Lifeline 3401004, Stainless Steel Cable, 130 ft
70007647624	3401005	3M™ DBI-SALA® Sealed-Blok™ RSQ 3-Way Retrieval Self-Retracting Lifeline 3401005, Galvanized Cable, 130 ft
70804495227	3400818	3M™ DBI-SALA® Sealed-Blok™ RSQ Self-Retracting Lifeline 3400818, Stainless Steel Cable, 25 m
70007451746	3400886B	3M™ DBI-SALA® Sealed-Blok™ RSQ Self-Retracting Lifeline 3400886B, Stainless Steel Cable, 85 ft
70007660916	3400891	3M™ DBI-SALA® Sealed-Blok™ RSQ Self-Retracting Lifeline 3400891, Galvanized Cable, 85 ft
70007452199	3400991B	3M™ DBI-SALA® Sealed-Blok™ RSQ Self-Retracting Lifeline 3400991B, Stainless Steel Cable, 130 ft
70007649513	3400992	3M™ DBI-SALA® Sealed-Blok™ RSQ Self-Retracting Lifeline 3400992, Galvanized Cable, 130 ft
70007460184	3400994	3M™ DBI-SALA® Sealed-Blok™ RSQ Self-Retracting Lifeline 3400994, Stainless Steel Cable, 130 ft
70804495144	3400816	3M™ DBI-SALA® Sealed-Blok™ Self-Retracting Lifeline 3400816, Stainless Steel Cable, 40 m
70804534520	3400859	3M™ DBI-SALA® Sealed-Blok™ Self-Retracting Lifeline 3400859, Galvanized Cable, 85 ft
70804438912	3400861	3M™ DBI-SALA® Sealed-Blok™ Self-Retracting Lifeline 3400861, Stainless Steel Cable, 85 ft
70007459749	3400862B	3M™ DBI-SALA® Sealed-Blok™ Self-Retracting Lifeline 3400862B, Stainless Steel Cable, 85 ft
70804534538	3400893	3M™ DBI-SALA® Sealed-Blok™ Self-Retracting Lifeline 3400893, Stainless Steel Cable, 85 ft
70007452041	3400966	3M™ DBI-SALA® Sealed-Blok™ Self-Retracting Lifeline 3400966, Stainless Steel Cable, 130 ft
70007452066	3400967B	3M™ DBI-SALA® Sealed-Blok™ Self-Retracting Lifeline 3400967B, Stainless Steel Cable, 130 ft
70007450755	3400846	3M™ DBI-SALA® Sealed-Blok™ Self-Retracting Lifeline with Magnetic Retraction 3400846, Stainless Steel Cable, 50 ft
70804108473	3400154	3M. DBI-SALA® Sealed-Blok. Retrieval Self-Retracting Lifeline 3400154, Stainless Steel Cable, ANSI, 85 ft.

70804108481	3400155	3M. DBI-SALA® Sealed-Blok. Retrieval Self-Retracting Lifeline 3400155, With Bracket, Stainless Steel Cable, ANSI, 85 ft.
70804108598	3400166	3M. DBI-SALA® Sealed-Blok. RSQ Retrieval Self-Retracting Lifeline 3400166, Stainless Steel Cable, ANSI, 85 ft.
70804108564	3400163	3M. DBI-SALA® Sealed-Blok. RSQ Self-Retracting Lifeline 3400163, Stainless Steel Cable, ANSI, 85 ft.
70804108309	3400137	3M. DBI-SALA® Sealed-Blok. Self-Retracting Lifeline 3400137, Stainless Steel Cable, ANSI, 85 ft.
No 3M ID	8301052	8301052 TRI/SRL 7FT GA 85FT
70804204801	8301095	8301095 TRI/SRL 9FT SS 85FT
70804204819	8301096	8301096 TRI/SRL 9FT GA 85FT
70804204843	8301099	8301099 TRI/SRL 9FT SS 130FT
70804504580	3400896B	RTRL 3V 25,5mSEL INOX
70804504606	3400918B	RTRL 3V 25m SEL RSQ
No 3M ID	3400990B	SRL 130' GALV RSQ2000180 END,CA(3400991B)
No 3M ID	3401028	SRL 130' GALV,RTRVL,RSQ9503163 END
70804108499	3400156	SRL 130' GALV,RTRVL2000180 END,420lb,ANSI
70804108523	3400159	SRL 130' SS,RTRVL,BRKT2000181 END,420lb,ANSI
70007450748	3400845	SRL 16.5mROPE RTRVL,BRKT2000181 END,CE
No 3M ID	3400868	SRL 25M 316SS2100127 END,CE
70007451647	3400859C	SRL 30' GALV,RTRVL,BRKT FLEMISH EYE,CSA
No 3M ID	3400885B	SRL 85' GALV,RSQ2000180 END,CA(3400886B)
No 3M ID	3400860B	SRL 85' GALV2000180 END,420lb CAP,CA
70007451704	3400878	SRL 85' SS RTRVL,BRKT2000180 END,420lbCAP,CSA
No 3M ID	3400877	SRL 85' SS RTRVL2000180 END,420lbCAP,CSA
70007459806	3400872	SRL 85' SS RTRVL2100042 END,420lb CAP
No 3M ID	3400888	SRL 85' SS,RSQ2000180 END
No 3M ID	3400890	SRL 85' SS,RSQ2000180 END,CSA
No 3M ID	3400914	SRL 85' SS,RTRVL,RSQ2000180 END,CSA
70804499054	3400912B	SRL 85' SS,RTRVL,RSQ2000181 END,CA(3400918B)
No 3M ID	3400864	SRL 85' SS2000180 END,420lbCAP,CSA



Personal Safety Division

3M Center, Building 235-2W-70
St. Paul, MN 55144-1000

3M PSD products are occupational use only.

3M Canada
P.O. Box 5757
London, Ontario
N6A 4T1

In United States of America
Technical Service 1-800-243-4630
Customer Service 1-800-328-1667
3M.com/workersafety

In Canada
Technical Service 1-800-267-4414
Customer Service 1-800-364-3577
3M.ca/Safety

© 3M 2024. All rights reserved.
3M is a trademark of 3M Company and its affiliates.

Used under license in Canada. All other trademarks are property of their respective owners.

Please recycle.

3M remains committed to providing quality products and services to our customers. We apologize for any inconvenience that this situation may cause you. We appreciate your continued support of 3M Fall Protection products and services.