



# DI-NOC<sup>TM</sup>

Architectural Finishes

Case Study | 2024

Post-Pandemic  
New Office Space





# 3M™ DI-NOC™ Architectural Finishes

Case Study 2024

Post-Pandemic New Office Space

**A space that feels as inviting as a cafe,  
designed as a new office environment post-pandemic.**

**A relaxing space surrounded by the warmth of wood.**

In December 2022, an office in Shinagawa Ward was renovated to accommodate the diversification of employee work styles.

The renovation included a balance of materials and colors to maintain a sense of unity throughout the office, while dividing the space by changing the configuration of each area.

In addition, from the viewpoint of biophilic design, a large amount of wood grain 3M™ DI-NOC™ Architectural Finishes was used for the appearance of a natural environment. 3M™ DI-NOC™ Architectural Finishes contributes to the creation of a space based on the theme of "ABW-Activity Based Working," which is not bound by conventional office design.



The light wood grain used for the columns lining the windows was designed to be naturally visible from all areas. Embracing the principles of biophilic design, the Premium Wood Series, known for its particularly realistic texture, was chosen to enhance relaxation and productivity through the visibility of wood.  
(Upper image: PW-2305MT in use)





# 3M™ DI-NOC™ Architectural Finishes

Case Study 2024

## Post-Pandemic New Office Space

3M™ DI-NOC™ Architectural Finishes PW-2308MT was used on the sides of the large counter table located in the center of the office area. Since the large table is likely to come into contact with the eyes and hands of employees, the Premium Wood Series was used with particularly realistic texture and color.

For the inner surface of the table, where ease of maintenance is important, the AR Abrasion Resistant Series was used, which is particularly resistant to scratches. FW-1022AR, which has a similar pattern to PW-2308MT, is used to match the overall tone of the counter table while adding abrasion resistance.



The outside of the table is covered with PW-2308MT with a high quality texture, and the inside is covered with FW-1022AR with abrasion resistant function. 3M™ DI-NOC™ Architectural Finishes, available in around 900 colors and patterns, allows for different functions while matching the overall tone of the interior.



# 3M™ DI-NOC™ Architectural Finishes

Case Study 2024

Post-Pandemic New Office Space

While the light wood grain complements the tone of the columns, the AR Abrasion Resistant Series, known for its scratch resistance, is used for the face of the storage cabinets, the base counter, the storage shelves for plants, and other areas prone to scratches from carts and leather shoes.



FW-1129AR used in both top and bottom photos



# 3M™ DI-NOC™ Architectural Finishes

Case Study 2024

## Post-Pandemic New Office Space

The columns are designed with a light wood grain pattern that naturally comes into view from all areas.

Incorporating a biophilia perspective, the Premium Wood Series, with its particularly superior texture, aims to increase relaxation and productivity by increasing wood visibility. (Below photo: PW-2305MT)

A washed-out concrete pattern is used in one corner of the floor. AE-2162MT, which goes well with light wood columns and colorful furniture, provides a gray background that blends easily into the space when viewed from a distance. When approached, the fine texture of the concrete pebbles and cement in the pattern can be clearly felt, making it easy to use in a variety of settings. (Right photo: AE-2162MT)





# 3M™ FASARA™ Glass Finishes

Case Study 2024

Post-Pandemic New Office Space

## Glass design for space continuity and privacy

3M™ FASARA™ Glass Finishes were instrumental in the renovation of the space, which was entirely divided by glass, including the change of use of the original rooms.

The existing conference rooms located throughout the area were divided into two groups: those that would continue to be used as conference rooms after the renovation, and those that would be newly used as storage and locker rooms. The former was designed with a gradient design on the glass to help ensure continuity and privacy, while the latter was designed to allow only light to pass through the glass, while keeping the rooms hidden from view.



**Above:** Before the renovation, the office area was surrounded on all sides by conference rooms. Therefore, a frosted film with texture was used to create a sense of closure on the glass while avoiding a closed-in feeling. The center gradation design helps to ensure transparency and light transmission, because it is transparent at the bottom and near the ceiling, which helps to ensure of the room without compromising the expansiveness of the space.

**Right:** The former conference room, which is now used as a storage room, was designed in a terrazzo style pattern that helps to provide and brings light into the room.





“The conference rooms in the back of the building have privacy with a glass film with a large gradient width to match the large graphics on the doors, creating a unified sense of scale across the series of conference rooms”

Designer: Masayoshi Kurosaki



## 3M™ DI-NOC™ Architectural Finishes

Case Study 2024

Post-Pandemic New Office Space

### CASE STUDY SUMMARY

#### 3M™ DI-NOC™ Architectural Finishes

##### Challenge :

To achieve an interior design with the warmth of high-quality wood and excellent maintainability.

##### Benefits :

By combining the realistic texture and color of the Premium Wood Series of 3M™ DI-NOC™ Architectural Finishes with the scratch resistant functionality of the 3M™ DI-NOC™ Architectural Finishes AR Abrasion Resistant Series, we were able to help improve maintainability without compromising the overall sense of unity of the space.

#### 3M™ FASARA™ Glass Finishes

##### Challenge :

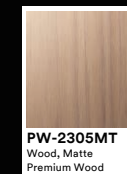
To create an office space with a sense of openness, while at the same time ensuring the privacy of the interior.

##### Benefits :

By using different glass films with different gradation widths, patterns, and patterns, we were able to help protect without compromising the expansiveness of the space.

##### Product Selection :

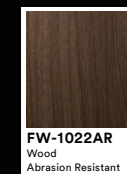
3M™ DI-NOC™ Architectural Finishes AR Series Abrasion Resistant, 3M™ DI-NOC™ Architectural Finishes Premium Wood Series, 3M™ FASARA™ Glass Finishes



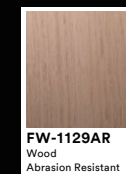
**PW-2305MT**  
Wood, Matte  
Premium Wood



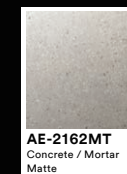
**PW-2308MT**  
Wood, Matte  
Premium Wood



**FW-1022AR**  
Wood  
Abrasion Resistant



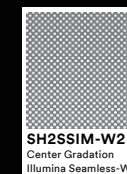
**FW-1129AR**  
Wood  
Abrasion Resistant



**AE-2162MT**  
Concrete / Mortar  
Matte



**SH2FGOV**  
Center Gradation  
Oval



**SH2SSIM-W2**  
Center Gradation  
Illumina Seamless-W



**SH2FGMI-W**  
Center Gradation  
Mist-W



**SH2FGMI-PR**  
Single Gradation  
Mist PR



**SH2FGTZ**  
Natural  
Terazzo

**IMPORTANT NOTICE.** The results and outcomes of case studies or testimonials should not be interpreted as a guarantee or warranty of similar results. You are responsible for evaluating the product and determining whether it is suitable for your application. Please refer to 3M published specifications for product and warranty information.

3M Commercial Branding and  
Transportation Division  
3M Center, Building 223-3N-30  
St. Paul, MN 55144-1000  
3M.com/AMD

3M, Comply, DI-NOC, and FASARA are trademarks of 3M. Used under license in Canada.  
All other trademarks are property of  
their respective owners.  
© 3M 2024 . All rights reserved.

Please recycle.

