

3M Science.
Applied to Life.™

Take worker health and safety to the next level.

3M™ Personal Protective Solutions
for the Mining Industry



Table of contents

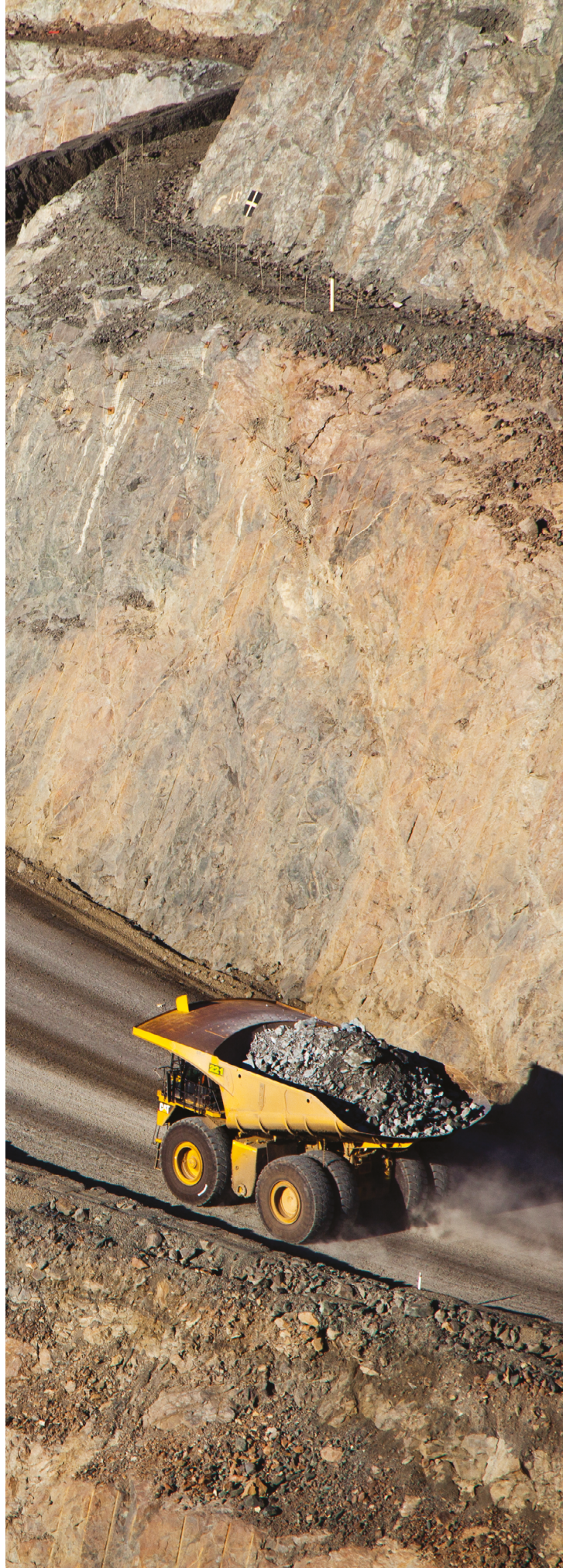
Introduction: 3M History	3
--------------------------	---

Health and Safety

3M science and PPE	5
Building a strong health and safety culture	6
Common mining risks that PPE has the potential to mitigate	6
The impacts of everyday work hazards	7
Worker health and safety throughout the mining process	8
3M products to address workplace hazards	10
The importance of wear-time	11

3M Personal Protective Equipment

What does integrated protection look like?	12
Select 3M PPE solutions	13
Respiratory protection solutions	14
Welding protection solutions	15
Protective communication and hearing protection solutions	16
Intrinsically safe communication solutions	17
Intrinsically safe Powered Air Purifying Respirator solutions	18
What does personal protection look like?	19
Respiratory protection solutions	20
Eye protection solutions	21
Fall protection solutions	22
Self-Contained Breathing Apparatus (SCBA) protection solutions	23
Validate your protection	24



For **50⁺** years, the safety behind your success

3M helps protect workers in a changing world. Across diverse industries and applications, our technology, knowledge and energy drive innovative solutions. Our goal is to help protect you from hazards in the work environment, so you can focus on the job at hand.

Over 50 years ago, 3M introduced the first U.S. Government-approved 3M filtering facepiece respirator, and the 3M™ E-A-R™ Classic Ear Plug.

Today, 3M remains dedicated to developing Personal Protective Equipment (PPE) to help get your workers back home: we apply science to life, helping protect workers' health and safety on the job, for employees today and tomorrow. Learn more about the history of our advancements and where we are going next.

[**3M.com/safety50**](https://3M.com/safety50)

Stay up to date with our latest safety news in mining industry.

[**3m.com.au/Mining**](https://3m.com.au/Mining)

[**3M.com.nz/Mining**](https://3M.com.nz/Mining)



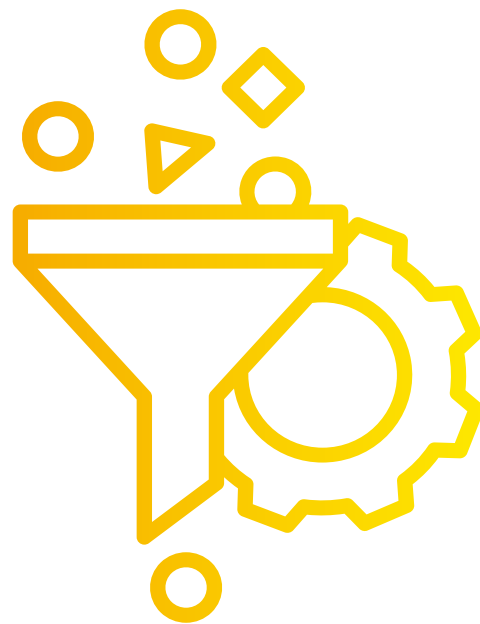
Ties that run deep

3M and the mining industry

When 3M was established in 1902, our founders had a simple goal: to mine for corundum, a mineral ideal for making sandpaper and grinding wheels. However, they soon discovered what they believed was corundum was actually low-grade anorthosite, which was unsuitable for making abrasives.

This setback could have ended our fledgling company, but our founders used it as an opportunity to develop the culture of innovation and collaboration that guides our company today.

This spirit of innovation has shaped the development of our catalog of personal protective solutions—and our roots in the mining industry has given us an understanding of the unique challenges your workers face. We are dedicated to serving you and share your commitment to improving worker health and safety.



We have safety down to a science.

Your workers deserve PPE that works as hard as they do, and that enables them to do their jobs with confidence. And because **PPE is the last barrier of protection, and it is only effective when worn correctly every time it is required.**, it should also be comfortable and easy to use.

With a comprehensive health and safety program enhanced by PPE and support resources from 3M, you can help your teams stay safe. With our broad portfolio of solutions, industry knowledge and support resources, we know what it takes to help you select PPE appropriate for the needs of your mine site.

Why work with 3M?

- ▶ Innovative technologies
- ▶ Industry knowledge and hazard awareness
- ▶ Regulatory and standards knowledge
- ▶ PPE standardization and improvement programs
- ▶ Training centers and online education courses
- ▶ Authorized service and repair centers
- ▶ Broad channel/reseller network

3M Personal Protective Solutions

- ▶ Confined space entry, exit and rescue solutions
- ▶ Comprehensive fall protection solutions
- ▶ Disposable, reusable and powered air purifying respiratory protection
- ▶ Head, face, eye and skin protection
- ▶ Welding safety solutions
- ▶ Hearing protection and communication solutions



Building a strong health and safety culture

As critical as the minerals you mine

Industries around the world depend on access to mineral resources for raw materials and energy, and the mining industry is at the forefront of this critical work.

As the industry's profile rises, it is more important than ever to demonstrate a commitment to responsible mining practices, including building a strong health and safety culture at every mine site and processing facility. Workers can be exposed to hazards every day. Some of these can impact a worker immediately and others lead to chronic conditions that may not impact workers until their career in the mine is over. Therefore, the steps taken to protect them today will have a positive impact far into the future.

Education and proper PPE use are two of the fundamental ways to help protect workers against the hazards they face at every step of the mining process. 3M offers PPE designed for both performance and comfort – all from a global PPE manufacturer with product solutions including head, eye, face, respiratory, hearing and fall protection.



Common risks encountered in mining that can have the potential to be mitigated with PPE use:



- ▶ Particulates (dust, mist and fumes)
- ▶ Noise
- ▶ Flying objects (liquids, particles)
- ▶ Radiant heat
- ▶ Vapors and gases
- ▶ Oxygen deficiency
- ▶ Skin exposure
- ▶ Work in confined spaces
- ▶ Work at heights
- ▶ Sharp edges
- ▶ Falling objects
- ▶ Contact with electricity
- ▶ Impact against mobile and immobile objects

The impacts of everyday work hazards

Mine workers that are unprotected from the hazards encountered today, can often lead to significant long-term injuries and illness. Understanding the near- and long-term risks of common mining tasks—and how the proper use of PPE can help reduce them—is essential to keeping workers safe today and tomorrow.



Respiratory Hazards

- Some fatal occupational respiratory diseases can take up to **20 years or longer** to develop. As consequences of breathing hazardous substances are often not immediate.

Silicosis: a devastating and life altering illness

- **USA:** more than **23%** of reported silicosis deaths attributable to mining.¹
- **Latin America:** silicosis prevalence rate of **37%** among miners, and up to **50%** among miners over age 50.²
- **Australia:** It is estimated that one in five people who have been exposed for more than three years would develop silicosis.³
- **Worldwide:** one of the most common work-related injuries is pneumoconiosis, specifically caused by exposure to Respirable Crystalline Silica (RCS)⁴

1. NIOSH. 2022. Mining Topic: Respiratory Diseases. (<https://www.cdc.gov/niosh/mining/topics/respiratorydiseases.html>)

2. CODELCO. Fight against silicosis: A battle that Codelco is determined to win. (<https://www.codelco.com/sustentabilidad/publicaciones/informe-sustentable/una-batalla-que-codelco-esta-decidida-a-ganar>)

3. NCBI. 2021. Early Detection Methods for Silicosis in Australia and Internationally. (<https://www.ncbi.nlm.nih.gov/pmc/articles/PMC8345652>)

4. NCBI. 2010. Silicosis due to Denim Sandblasting in Young People: MDCT Findings. (<https://pubmed.ncbi.nlm.nih.gov/25610113>)



Hearing Loss

- More than **120 million** workers in the world are exposed to noise levels above 85 dB. (WHO)
- The annual cost of unprevented hearing loss is in the range of **\$750–790 billion** globally. (WHO, 2017)
- Noise-induced hearing loss is one of the most common occupational injuries, and the second most self-reported occupational disorder. (NIOSH)

Occupational hearing loss: is permanent and 100% preventable

- **AUS:** An estimated one million workers in Australia may be exposed to dangerous levels of noise at work.¹
- **AUS:** Mining is one of the main industries in Australia with the highest incidence rates of occupational noise-induced hearing loss (ONIH).¹
- **USA:** Estimated 90% of miners have developed hearing impairment by age 50.²
- **Peru:** **48.4%** of workers suffer some illness due to noise exposure.³

1. Australian Public Health c02_pdf.pdf (aph.gov.au)

2. Kan Sun and A. S. Azman. Evaluating hearing loss risks in the mining industry through MSHA citations. J. Occup Environ Hyg. 2018 Mar; 15(3):246-262.

3. Sub-bulletin Feb. 28, 2019. Energy & Mines Ministry. Government of Peru.



Work at Heights

- **68%** of accidents occur at heights of less than 2 meters. This occurs because, at low height, we have a lower perception of risk. (UK HSE)
- Falls are the **second leading** cause of unintentional injury and death worldwide. (WHO)

Falls from height: can cause disabling injury or death

- **Chile:** falls are the **second leading** cause of death in the mining industry.¹
- **USA:** Falls are the **second leading** cause of workplace injuries in 2020, responsible for **18.2%** of all injuries.²

1. https://www.suseso.cl/607/articles-590749_archivo_01.pdf

2. <https://archive.cdc.gov/www.cdc.gov/niosh/injury/fastfacts.html>

Worker health and safety throughout

1 Mine planning and development

Mine planning and development is the process of determining the most efficient and cost-effective way to extract minerals from a deposit while considering various factors such as geological characteristics, economic feasibility, environmental considerations, and safety requirements.

Key safety considerations:

- ▶ Mitigating dust and respiratory hazards from drilling and blasting
- ▶ Protecting workers by providing protection from hazardous noise and improving communication while working around loud heavy machinery and equipment
- ▶ Managing eye and face hazards from chemicals and debris

2 Open pit extraction (surface)

Open-pit mining, also known as opencast mining, is a surface mining method used to extract minerals or ore deposits that are located near the surface of the Earth. It involves the excavation of an open pit or burrow in the ground, which allows access to the desired minerals or materials.

Key safety considerations:

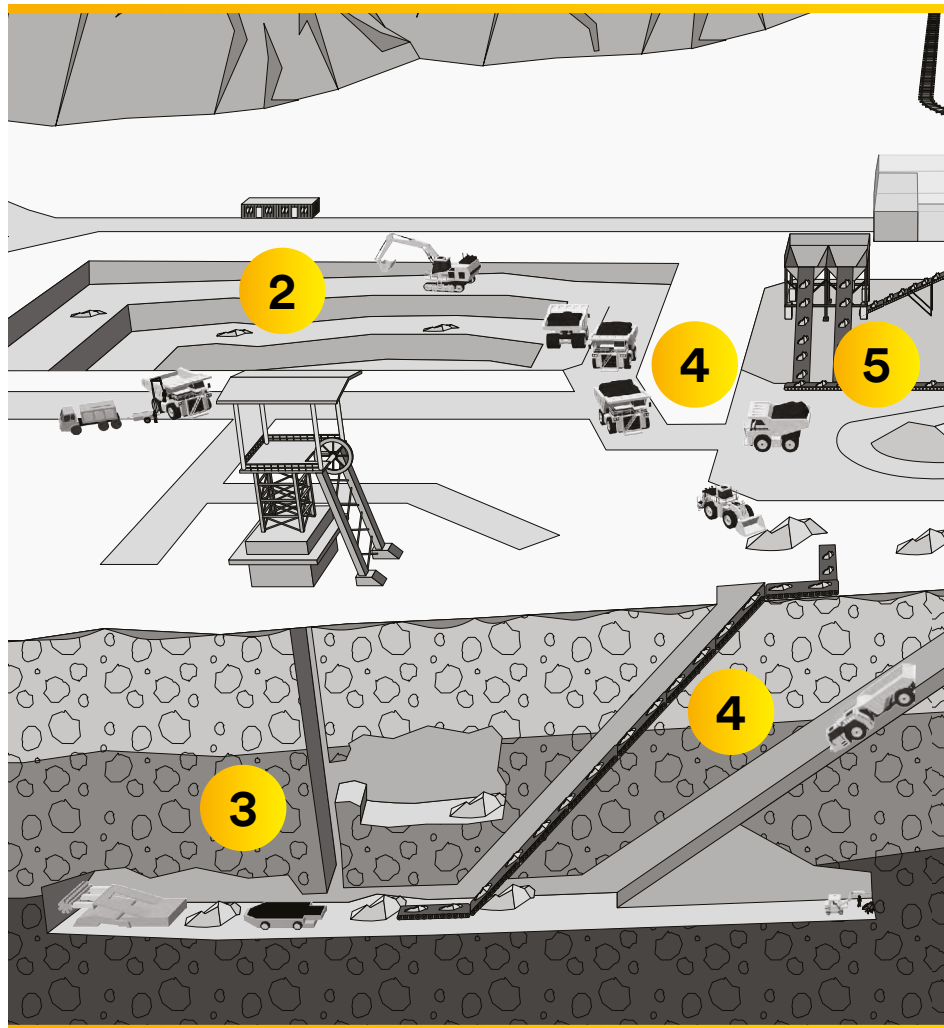
- ▶ Ensuring the stability of pit walls to prevent rockfalls and collapses
- ▶ Implementing proper maintenance and training programs for vehicles and equipment
- ▶ Managing traffic effectively to avoid collisions
- ▶ Providing fall protection solutions for tasks at heights
- ▶ Implementing dust control measures to protect respiratory health

3 Underground mining

Underground mining is a mining method used to extract minerals or ore deposits that are located deep beneath the Earth's surface. Unlike open-pit mining, which extracts minerals from an open pit or borrow, underground mining involves accessing the mineral resources by creating tunnels and shafts.

Key safety considerations:

- ▶ Safeguarding workers' hearing in noisy environments
- ▶ Mitigating exposure to hazardous gases, heat stress, fogging and the risk of rockfalls and cave-ins (intrinsically safe PPE may be required in potentially explosive environments)
- ▶ Implementing rock support systems, cementation, clear communication, gas monitoring and robust safety training programs



4 Internal transportation

Mining internal transportation refers to the movement of materials, equipment, and personnel within a mining operation. It involves the logistics and infrastructure required to transport various resources and personnel efficiently and safely within the mining site. Efficient and safe internal transportation systems are crucial for optimizing mining operations, ensuring timely delivery of materials, maintaining productivity, and minimizing downtime.

Key safety considerations:

- ▶ Ensuring proper planning, maintenance and adherence to safety protocols to ensure the smooth and safe movement of materials and personnel

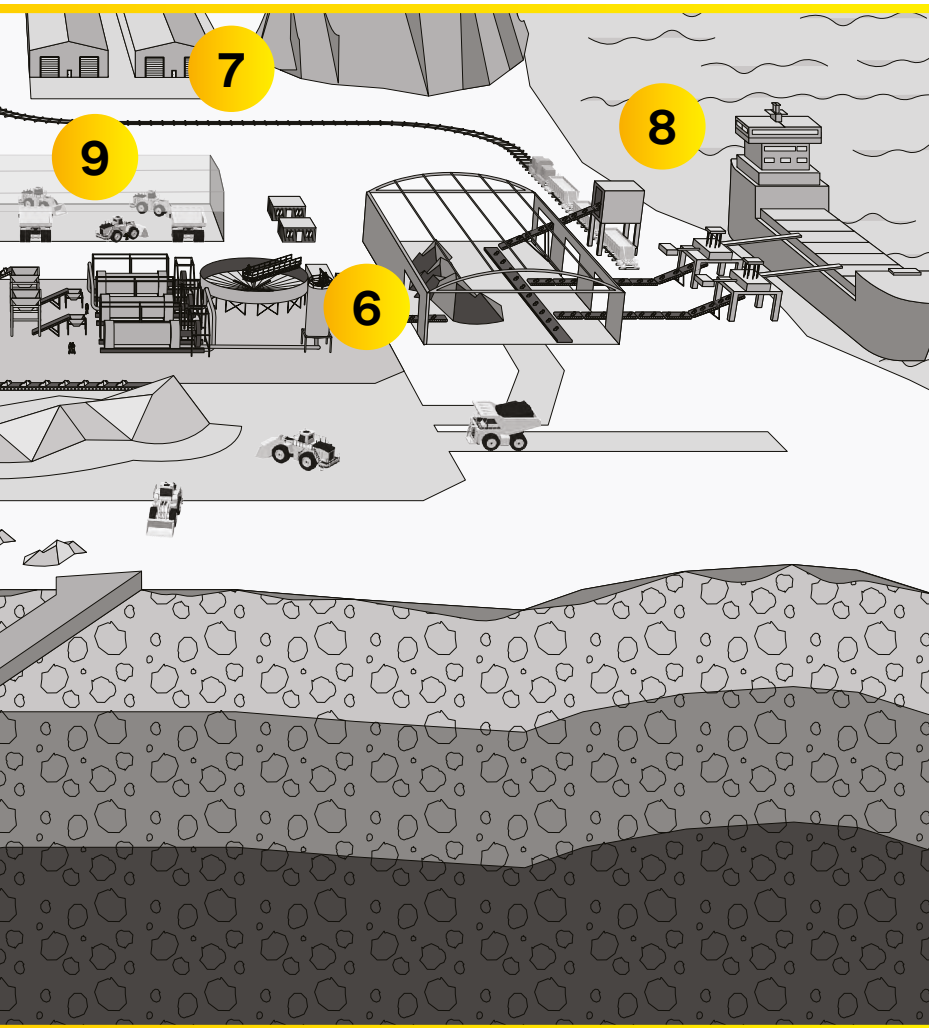
5 Crushing and grinding

Crushing and grinding are essential processes in the mineral processing industry, aimed at reducing the size of ore or rock particles to facilitate the extraction of valuable minerals. These processes involve breaking down the ore or rock into smaller, more manageable sizes, which can then be further processed or concentrated.

Key safety considerations:

- ▶ Protecting workers from exposure to noise, falling objects, electrical hazards, dust and silica
- ▶ Reducing the risk of slips, trips and falls
- ▶ Managing ergonomic risks related to manual handling and labor

the entire mining process



8 Outbound storage and transportation

Mining outbound storage and transportation refers to the processes involved in storing and transporting mined materials or products from the mining site to their intended destinations. Once minerals or ore have been extracted and processed, they need to be stored and transported efficiently and safely to reach customers, processing facilities, or distribution centers.

Key safety considerations:

- ▶ Minimizing the risk of material handling injuries and vehicle accidents
- ▶ Managing dust and particulate hazards
- ▶ Reducing fire and explosion risks
- ▶ Preventing spillage and environmental contamination
- ▶ Ensuring site security

9 Mining maintenance

Mining maintenance refers to the activities and processes carried out to ensure the proper functioning, reliability, and longevity of mining equipment, machinery, infrastructure, and facilities. It involves regular inspections, repairs, servicing, and upkeep of mining assets to prevent breakdowns, optimize performance, and minimize downtime. Maintenance tasks can range from routine preventive maintenance, such as lubrication and filter replacement, to more extensive repairs or overhauls of equipment components. Maintenance operations could often be the largest consumers of PPE. Crushing, grinding, separation, refining and pelletizing processes are very hard on equipment and the equipment requires frequent maintenance.

6 Ore separation

Mining ore separation, also known as mineral processing or beneficiation, refers to the process of separating valuable minerals from the surrounding gangue (unwanted material) in an ore deposit. The goal is to extract and concentrate the valuable minerals, such as metals or industrial minerals, for further use or refining.

Key safety considerations:

- ▶ Protecting workers from dust and particulate hazards during crushing and grinding operations
- ▶ Managing risks associated with moving machinery and equipment
- ▶ Reducing the risk of slips, trips and falls
- ▶ Protecting against heat and chemical exposure

7 Refining (Smelting, Roasting & Electrowinning)

Ore refining is the last process before commercialization. The process finishes with ore refined that then will be used to manufacture other things, as well as raw materials for other industries, for example:

- ▶ Aluminum (cans, airplane, furniture, etc.)
- ▶ Copper (electrical cables, coins, jewelers, musical instruments, etc.)
- ▶ Gold (coins, jewelers)
- ▶ Iron (steel manufacture, pipes, machines, with Ni+Cr+Mo stainless, etc.)
- ▶ Potash (agriculture fertilizer)
- ▶ Lithium (ion batteries)

Several different refining processes could take place during mining process, but most common are smelting, roasting, acid dissolution and electrowinning (electro deposition of metals)

Take on hazards for a safe and healthy shift

When the health and safety of mine workers is at stake, you want PPE that you can trust – and that your workers will feel good about wearing. With 3M™ Personal Protective Solutions, you can help ensure your workers are protected.



Respiratory Protection

From dust generated during ore extraction, separation and transportation to the chemicals used in processing and refining, mine workers are exposed to potential respiratory hazards at all steps of the mining process.

- ▶ 3M™ Disposable Respirators and Reusable Respirators
- ▶ 3M™ Versaflo™ Powered Air Purifying Respirators (PAPR)



Hearing Protection and Communication Solutions

Noise mitigation is a significant concern on mine sites, not only to help protect workers' hearing but to facilitate clear communication.

- ▶ 3M™ Earplugs
- ▶ 3M™ Earmuffs
- ▶ 3M™ PELTOR™ Headsets



Face and Eye Protection

Dust, particles and flying objects present a risk of eye injury during ore extraction, transportation and processing. Refining environments present additional risks such as chemical exposures, radiant heat and infra-red light.

- ▶ 3M™ SecureFit™ Protective Eyewear with Scotchgard™
- ▶ 3M™ Protective Faceshields



Respiratory and Communication Solutions for explosive environment

- ▶ 3M™ TR-800 Versaflo™ Kit in intrinsically safe PAPRs
- ▶ 3M™ PELTOR™ WS LiteCom Pro III, IS (Intrinsically Safe)



Head Protection

Falling objects and low clearances can put mine workers at risk of head injury.

- ▶ 3M™ SecureFit™ Hard Hats



Fall Protection

Working at heights is one of the most common causes of injury for mine workers around the world.

- ▶ 3M™ DBI-SALA® Fall Protection



Confined Space Entry, Exit and Rescue

Many steps of the mining process require workers to access and perform their roles in confined spaces, sometimes for extended periods of time.

- ▶ 3M™ DBI-SALA® Confined Space Solutions
- ▶ 3M™ Scott™ SCBA and Supplied Air Respirators



Emergency Breathing Apparatus

Mine workers may encounter low-oxygen environments in confined spaces or as the result of accidents such as underground fires.

- ▶ 3M™ Scott™ SCBA, 3M™ Scott™ Ska-Pak and 3M™ Scott™ ELSA™ for emergency use



Welding Safety

Welding can expose workers to welding fumes and UV radiation which can put them at risk for eye and respiratory injury.

- ▶ 3M™ Speedglas™ Welding Helmets
- ▶ 3M™ Adflo™ Powered Air Purifying Respirator Systems





Wear time: Get the most out of your protective equipment

PPE can only do its job when it is worn properly, 100% of the time.

What does it mean?

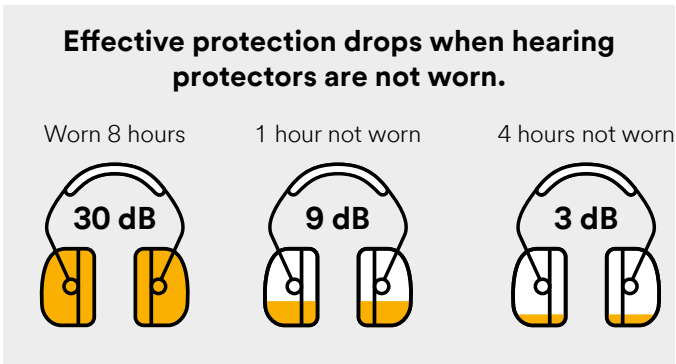
Wear time is the percentage of time a worker actually wears their required PPE vs. the amount of time they should wear it to achieve the *Required Minimum Protection Factors (RMPF)* or *Assigned Protection Factor (APF)*. Used to help select respiratory PPE, APF assumes that workers use their required PPE properly 100% of the time they may be exposed while on the job. *Effective Protection Factor (EPF)* is the actual protection rate factor according to the wear time for each worker. Refer to AS/NZS 1715 for RMPF of different respirator combinations

Impact on respiratory protection EPF

Respirator Type	APF	Percent of Time Respirator Worn & Associated EPF		
		100%	95%	80%
 Half-face respirator	10	10	7	3.6
 Full-face respirator	50	50	14.5	4.6
 Powered & Supplied Air	Protection factors up to 100+, based on the headtop and filter/cartridge being used			
 SCBA				

Colton, Craig. "Respiratory Protection." *Fundamentals of Industrial Hygiene*. Ed. Barbara Plog. Itasca: National Safety Council, 2012. 678-679.1

Impact on hearing protection



Even when noise seems to be at a reasonable level, noise above 85 dBA can still lead to long-term damage. Noise-induced hearing loss is caused by the damage and eventual death of sensory cells in your ears, called hair cells. Unlike some other cells, human ear hair cells never grow back.¹

¹ Based on LAeq,8h, 95 dBA exposure and using the Recommended Workplace Exposure Limit (WEL) of 85 dBA and 3 dB exchange rate.



Potential reasons why workers may not wear their PPE

- **Discomfort:** heat, humidity, lack of breathability
- **Performance:** fogging eyewear, inability to communicate clearly
- **Compatibility:** eye protection worn under earmuffs may impact hearing protection
- **Communication:** workers may remove PPE to communicate

Potential result: **lower wear time** and negative impact on worker health and safety.



The potential impact of low wear time

- Increased instances of occupational illness, e.g. silicosis/pneumoconiosis
- Increased instances of noise-induced hearing loss
- Increase in workplace accident rates
- Increase in Lifetime Injury Frequency Rate (LTIFR)
- Increase in worker fatalities
- Negative impact on welfare of workers and their communities
- Negative impact on business reputation
- Negative impact on Total Cost of Operation (TCO)



What can improved wear time do for you?

- ▶ Maximize Effective Protection Factor (EPF)
- ▶ Reduce time of exposure
- ▶ Reduce probability of accidents and occupational diseases
- ▶ Improve Lifetime Injury Frequency Rate (LTIFR)
- ▶ Improve health and social welfare of mining communities



Three keys to improving wear time

- ▶ **Fit:** select PPE optimized for wearability, validate with fit testing
- ▶ **Communication:** make it easier to speak and hear without removing PPE
- ▶ **Compatibility:** choose integrated and compatible PPE designed to be worn together

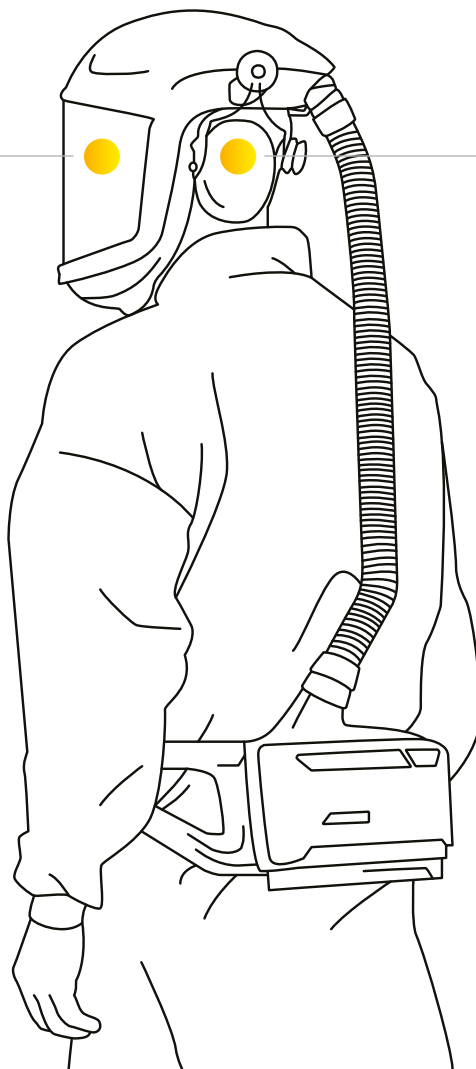
What does integrated protection look like?

3M™ Versaflo™ PAPR systems combine respiratory protection while unifying the other elements of select individual protection for hearing, eyes, face and head – all in a single system. This next-level PPE solution in turn may help to increase wear time, thanks to a combination of comfort, compatibility, communication, breathability, and fit.



3M™ Versaflo™ Powered Air Purifying Respirator (PAPR)*

- ▶ Integrated face and head protection for certain headgear
- ▶ Continuous airflow for breathability and comfort
- ▶ Accommodates limited facial hair
- ▶ Integrated heat protection accessories to protect against sparks, splashes and radiant heat during ore refining
- ▶ Available integrated head lamp accessories for underground mining and maintenance
- ▶ Can be combined with 3M™ Speedglas™ Welding Helmets



2-way radio and environmental listening

Mining processes such as crushing, electrowinning and smelting require both hearing and respiratory protection. In these high-noise environments, workers might remove their respiratory protection in order to communicate clearly – putting themselves at risk.

3M™ PELTOR™ Protective Communications*

- ▶ Enables clear communication without removing any PPE
- ▶ Environmental microphones for level-dependent protection
- ▶ Ambient listening allows workers to hear alarms and vehicles

*Not MSHA approved when intrinsically-safe approvals are required

Select 3M PPE safety solutions

Integrate with 3M™ M-Series



3M™ Versaflo™ Helmets M-300 Series



3M™ Versaflo™ TRM-307C
PAPR Ready-to-go Kit



3M™ Versaflo™ CAPM-307
PAPR Ready-to-go Kit



3M™ Versaflo™ Powered Air
Purifying Respirator
Starter Kit



3M™ Versaflo™ Powered
Air Purifying Respirator
Starter Kit, Intrinsically
Safe

Radiant heat resistant covers



3M™ Versaflo™
Radiant Heat Cover
M-973N (for M-307)
M-975N (for M-407)
M-967 not included



3M™ Versaflo™
Gold Coated
Tinted Over-Visor
with UV/IR
M-967N +
High heat visor
holder M961

Accessories



BT-40 heavy duty hose



3M™ Versaflo™
Heavy duty belt
TR-626



3M™ Speedglas™
Heavy-Duty Back Pack
BPK-HD



3M™ Versaflo™ Earmuff
attachment for M-Series
Headgear Z3AF/2

Available hearing and communication solutions



3M™ PELTOR™ Electronic
Earplug, EEP-100



3M™ PELTOR™
Twin Cup EX Headset



3M™ PELTOR™ WS™
LiteCom PRO III



3M™ PELTOR™ WS™
ProTac XPI



3M™ PELTOR™ Boom
Microphone MT7V/1

Respiratory Protection Solutions



When tasks may expose workers to airborne hazards such as dust, mist, fumes, and chemicals, dependable respiratory protection may be required. 3M offers a broad portfolio of respiratory solutions – reusable and disposable respirators, powered air purifying respirators (PAPRs) – that help your workers breathe easy.

3M™ Versaflo™ TR-Series Ready-to-use Kits



TR-619A



TR-819A

Product #:	Description:
TRM-307C	TR-300+ PAPR Kit which includes TR-302E+ Air filter unit, M-307 Headtop with flame resistant faceseal, BT-30 Breathing Tube, TR-970 Air flow indicator, TR-332 Battery Pack, TR-341A Single station Battery charger, TR-3712E PAPR-P3 Particulate filter, TR-371+ Filter cover, TR-3600 Prefilter, TR-362E Spark arrestor, TR-325 Standard waist belt and S1303-0166 padded bag.
CAPM- 307C	TR-300+ PAPR kit which includes TR-302E+ Air filter unit, M-307 Headtop with flame resistant faceseal, M-940 cap lamp attached and reflective tape, BT-30 Breathing Tube, TR-970 Air flow indicator, TR-332 Battery Pack, TR-341A Single station Battery charger, TR-3712E PAPR-P3 Particulate filter, TR-371+ Filter cover, TR-3600 Prefilter, TR-362E Spark arrestor, TR-325 Standard waist belt and S1303-0166 padded bag
TR-619A	Versaflo™ Powered Air Turbo Starter Kit includes TR-602E powered air turbo unit, TR-632 battery, BT-30 Breathing Tube, TR-971 Airflow indicator, TR-6600 Pre Filter, TR-662 Spark arrestor, TR-627 Easy Clean Belt, TR-641A single station battery charger. Does NOT include a filter, filter cover, and headtop/hood which are required to be purchased separately
TR-819A	TR-819A IS PAPR Starter Kit includes TR-802E powered air turbo unit, TR-830 battery, BT-30 Breathing Tube, TR-6600 Pre filter, TR-627 Easy Clean Belt, TR-971 Airflow indicator, TR-641A single station battery charger and TR-838 battery attachment tool. Does NOT include a filter, filter cover, or headtop/hood which are required to be purchased separately



M-307 with M-940



TRM-307C



CAPM-307C
*Cap lamp not included



M-973

3M™ Versaflo™ M-Series Headgear

Product #:	Description:
M-307 with M-940	M-307CAP M-307 helmet with M-940 Cap lamp bracket kit
M-307	Respiratory hard hat with visor and faceseal
M-407	Respiratory helmet with visor and flame resistant shroud
M-940	Mining lamp bracket

3M™ Versaflo™ M-Series Headgear is offered in multiple configurations to suit your environment, workforce, and potential airborne contaminants. Whether your environment calls for a faceshield or hard hat, this safety gear is easily connected to approved breathing tubes, and is approved for use in many of supplied air and powered air configurations. The 3M™ Versaflo™ Mining Lamp Bracket, M-940, is designed to securely hold a range of fixed and adjustable angle mining lamps.

3M™ Radiant Heat Accessories for 3M™ Versaflo™ Series Helmets M-307/M-407

Product #:	Description:
M-973	Radiant heat cover for M-307
M-975	Radiant heat cover for M-407
M-961	Over-visor frame
M-967	Gold coated tinted over-visor – UV/IR protection
BT-40	BT-40 Heavy Duty Rubber Breathing Tube
TR-381	Disposable PAPR cover for TR-300
TR-681	Disposable PAPR cover for TR-600

3M™ Versaflo™ Radiant Heat Accessories are designed as a modular system, so you can customize coverage levels for tough environments. Intended for use on select M-Series helmets, which are compatible with a wide variety of 3M air sources.

Welding Protection Solutions



Help protect your workers from welding fumes, metal particles and UV, IR, and visible light with 3M™ Speedglas™ and 3M™ Versaflo™ products. These welding helmets and shields help protect workers' vision, while auto-darkening filter attachments help them see the weld puddle in greater detail. What's more, many 3M welding helmets can be combined with respiratory solutions (including PAPR assemblies) for respiratory protection.

3M™ Speedglas™ G5-01 Welding Helmet Powered Air System

Product #: G5-01



3M™ Adflo™ Powered Air Purifying Respirator System with 3M™ Speedglas™ G5 Series Welding Helmet provides all of the benefits of our G5 series welding helmet with our convenient Adflo™ Powered Air Purifying Respirator system (PAPR).

The 3M™ Adflo™ Powered Air Purifying Respirator (PAPR) with Speedglas™ G5 Series Heavy-Duty Welding Helmet system provides High-Efficiency particulate respiratory protection for welders in a robust yet compact design with ergonomic, adjustable head suspension. Flip front welding shield allows for a clear, wide-view protective visor for grinding and setup. The 3M™ Adflo™ PAPR has a High-Efficiency particulate filter that can be "stacked" onto an optional 3M™ Adflo™ Cartridge (not included) for additional protection against OV/SD/CL/HC vapors or a Nuisance Odor Pad Assembly. Audible and visual alarms signal low airflow and low battery charge. Available in two different Auto-Darkening Lens options (VC/TW). G5 Series storage/carry bag included.

3M™ Speedglas™ G5-02 Welding Helmet, with Curved ADF, Headband

Product #: G5-02



3M™ Speedglas™ Welding Helmet G5-02 with curved glass Auto-Darkening Lens. Thanks to the improved optics, the 3M™ Speedglas™ Curved Welding Lens G5-02 allows you to more readily recognize colors, using the 3M™ Speedglas™ Natural Color Technology.

3M™ Speedglas™ Welding Helmet G5-02 with curved glass Auto-Darkening Lens. Thanks to the improved optics, the 3M™ Speedglas™ Curved Welding Lens G5-02 allows you to more readily recognize colors, using the 3M™ Speedglas™ Natural Color Technology. Features our largest Auto-Darkening Lens field of view ever (150x76 mm), utilizing the 3M™ Speedglas™ Curved Glass Technology. Light state 2.5 with variable dark shades 8-12. By selecting just the right settings for each task, you help reduce eye strain and can improve the quality of every weld. Arc detection sensitivity can be adjusted for unsurpassed switching reliability. Offers highly sensitive arc detection ideal for TIG welding operations. Adjustable delay function to set dark-to-light opening time.

3M™ Secure Click™ Half Facepiece Reusable Respirator with Speaking Diaphragm HF-802SD

Product #: HF-802SD



Designed with smart and intuitive features, the new 3M™ Secure Click™ Half Facepiece Reusable Respirator is simple, comfortable and reliable.

The 3M™ Secure Click™ HF-800SD Series Half Facepiece Reusable Respirator helps protect against particulates and a wide variety of gases and vapors when used with approved 3M™ Secure Click™ cartridges and filters. Available in three sizes with speaking diaphragm to help provide easier communication while you work.

3M™ Particulate Respirator 8214, N95, with Faceseal and Nuisance Level Organic Vapor Relief

Product #: 8214



3M Particulate Respirator 8214, N95 is designed to meet NIOSH certification standards: USA NIOSH R95, P95/P100. Some models available with flame resistant layers for applications such as welding or soldering which combines with cake resistant filter media and as well as the Activated Carbon Filter layer for the control of nuisance level organic vapors*

*3M recommended for relief against nuisance levels of organic vapors. Nuisance level refers to concentrations less than the OSHA PEL or applicable government occupational exposure limits, whichever is lower.

Protective Communication and Hearing Protection Solutions



Noise – sources like tools, nearby process equipment and vehicles – not only puts mine workers' hearing at risk but can also be a major distraction during critical tasks. Help keep the volume down with hearing protection solutions from 3M, which include earplugs (disposable, reusable and electronic), earmuffs and headsets with integrated communications to help keep your workers protected and focused.



MT73H7B4D10EU



MT73H7A4D10EU



MT73H7P3E4D10EU

[Click here for Technical Data Sheet](#)

3M™ PELTOR™ WS™ LiteCom Pro III Headset

Product #:	Description:
MT73H7A4D10EU	3M™ PELTOR™ WS™ LiteCom Pro III Headset, 403-470 MHz, Analog/Digital, EU version, Headband SLC80 32dB (Class 5)
MT73H7B4D10EU	3M™ PELTOR™ WS™ LiteCom Pro III Headset, 403-470 MHz, Analog/Digital, EU version, Neckband SLC80 30dB (Class 5)
MT73H7P3E4D10EU	3M™ PELTOR™ WS™ LiteCom Pro III Headset, 403-470 MHz, Analog/Digital, EU version, Helmet attach SLC80 29dB (Class 5)

The 3M™ PELTOR™ WS™ LiteCom Pro III Headset offers wireless communication in noisy environments. Suitable for work in industrial and construction applications, where handsfree communication and hearing protection are needed.



[Click here for Technical Data Sheet](#)

3M™ PELTOR™ WS™ ProTac XPI Headset Hard Hat Attached MT15H7P3EWS6

Product #: MT15H7P3EWS6

The 3M™ PELTOR™ WS™ ProTac XPI Headset is a next generation Bluetooth® protective communication solution. With Bluetooth® multipoint connectivity, the headset can be simultaneously connected to two Bluetooth® enabled devices. And with the noise-cancelling boom microphone that carries a water and dust protected IP68 rating, workers can have clear, hands-free communication in noisy and harsh environments.



X4B

X4P3GS/E

[Click here for Technical Data Sheet](#)

3M™ PELTOR™ X4 Earmuffs

Product #:	Description:
X4B	3M™ PELTOR™ X4 Series Neckband Earmuffs Light Green SLC80 29dB (Class 5) 10 Ea/Case UOM
X4P3GS/E	3M™ PELTOR™ Cap Attached Earmuffs SLC80 26dB (Class 5) 10 Ea/Case UOM

3M™ PELTOR™ X4 Earmuffs offer a slim lightweight option. When correctly selected and worn, these products can help to reduce exposure to hazardous levels of noise.

Note: 3M recommends replacing the hygiene kit every six months to maintain acceptable noise reduction, hygiene and comfort. In hot and humid environments more frequent changes may be required to maintain acceptable hygiene



[Click here for Technical Data Sheet](#)

3M™ PELTOR™ Electronic Earplug, EEP-100

Product #: EEP-100 EU

3M™ PELTOR™ EEP-100 Electronic Earplug helps protect your hearing, and can help improve situational awareness and communications in challenging environments. This kit includes a protective charging case and an assortment of eartips.



[Click here for Technical Data Sheet](#)

3M™ PELTOR™ ProTac™ III MT13H221P3E, Headset, Black, Helmet Attached

Product #: MT13H221P3E

The 3M™ PELTOR™ ProTac™ III hearing protector helps protect against harmful noise, whilst allowing ambient sounds to be heard*. It increases your ability to communicate with nearby colleagues, as well as hearing warning signals, approaching vehicles, or sounds in machines and processes.

*For user protection, output from headset is not above 82 dB for all sources at a maximum power of 300mV RMS.

Intrinsically Safe Communication Solutions



3M™ PELTOR™ WS™ Litecom Pro III Ex Headset ANZEx Certified (IECEX/ANZEx)

The 3M™ PELTOR™ WS™ LiteCom Pro III Ex Headset ANZEx Certified is the next generation protective communication solution. With an integrated, programmable analog/digital two-way radio, Bluetooth® Multipoint connectivity, noise-cancelling microphone, and level dependent function for ambient listening, the 3M™ PELTOR™ WS™ LiteCom Pro III Ex Headset ANZEx Certified not only helps protect you against hazardous noise, but also makes it easy to communicate in noisy environments and helps you maintain situational awareness.

Application: The 3M™ PELTOR™ WS™ LiteCom Pro III Ex Headset, ANZEx-certified, offers wireless communication in noisy environments. Can be used for work in Oil & Gas Industry, Mining and where intrinsic safety products are required. Approved for use in potentially explosive environments in accordance with the ANZEx scheme and the IECEX scheme for dust, gas and underground mining in all Australian States and Territories.



MT73H7P3E4D10EU

[Click here for Technical Data Sheet](#)



MT73H7P3E4D10EU-50



MT73H7B4D10EU-50

Product #:	Description:
MT73H7F4D10EU-50	3M™ PELTOR™ WS™ LiteCom Pro III Ex Headset, 403-470 MHz, Analog/Digital, Ex, EU version, Headband
MT73H7P3E4D10EU-50	3M™ PELTOR™ WS™ LiteCom Pro III Ex Headset, 403-470 MHz, Analog/Digital, Ex, EU version, Helmet
MT73H7B4D10EU-50	3M™ PELTOR™ WS™ LiteCom Pro III Ex Headset, 403-470MHz, Analog/Digital, Ex, EU version, Neckband

Features and Benefits:

- Programmable analog/digital radio (Frequency range: 403 – 470 MHz)
- Bluetooth® multipoint functionality
- Watertight microphone (IP68)
- Level-dependent function for ambient listening
- Push-to-Listen function
- Rechargeable battery, Li-Ion
- Voice operated transmission (VOX)
- External connection jack

Accessories



[Click here for Technical Data Sheet](#)

3M™ PELTOR™ CH-3 Listen Only Headset, Helmet Attach, Ex approved HT52P3E-112-50 (IECEX)

Product #: HT52P3E-112-50

The 3M™ PELTOR™ CH-3 FLX2 Listen only Ex Hearing Protector will bring hearing protection and communication in noisy environments into a new level of performance with newly designed speakers. The newly designed dual mould cup gives a modern and slim look, along with a bright blue colour to indicate Ex/IS certified design.



[Click here for Technical Data Sheet](#)

3M™ PELTOR™ TWIN CUP™ Headset IECEX/ATEX Hard Hat Attached MT72H540P3E-50 (IECEX)

Product #: MT72H540P3E-50

The PELTOR™ TWIN CUP™ Headset IECEX/ATEX has high-attenuating shells with optimised acoustic design and excellent space for the ears. Noise compensated microphones for clear and reliable communication.

Note: 3M recommends replacing the hygiene kit every six months to maintain acceptable noise reduction, hygiene and comfort. In hot and humid environments more frequent changes may be required to maintain acceptable hygiene

Intrinsically Safe Powered Air Purifying Respirator Solutions



TR-819A starter kit

[Click here for Technical Data Sheet](#)

3M™ Versaflo™ TR-800 Powered Air Purifying Respirator

- The Versaflo TR-800 features a PAPR blower UL-certified with an intrinsically safe (IS) rating of Division 1: IS Class I, II, III; Division 1 (includes Division 2) Groups C, D, E, F, G; T4, under the most current standard (UL 60079, 6th Edition, 2013). Safety in Mines Testing and Research Station (Simtars) IECEx SIM 19.0013
- LED indicators on the turbo indicate battery charge level, particulate filter loading status and airflow setting
- Audible and visual alarms assure you can hear, see when your PAPR has low-charge or low-flow
- Multi-speed blower functions at altitudes between -610m below sea level and up to 4,880 metres. Battery charges quickly, achieving 90% charge in approximately 3.5 hours.
- Three user selectable flow rates 185, 205 & 225 l/min with a loose fitting headtop/hood OR 135, 150 & 170 l/min in tight fitting facepiece mode.
- Battery comes with built in charge level indicator, a mechanical attachment of battery to help prevent battery removal during use. Approximately 750 full charge/discharge cycles.
- IP54 for TR-800 Blower (while in use). IP67 for TR-800 Blower with TR-653 Cleaning Plugs attached (while cleaning)

Motor/Blower Safety

Mining Atmospheres
IEC 60079-11
Ex ia IMA

ia - intrinsic safety- safe with rare malfunction
I - Mining group
Ma - Equipment protection level mining

Non-Mining Gas atmospheres (Group II)
EN 60079-11 Ex ia IIB T4 Ga

ia - intrinsic safety for Equipment protection level Ga
IIB - Gas apparatus group
T4 - Max. surface temperature 135°C (-20°C ≤ Ta ≤ 55°C)

Non-Mining Dust atmospheres (Group III)
EN 60079-11 Ex ia IIIC 135°C Da

ia - intrinsic safety for Equipment protection level Da
IIIC - Dust apparatus group
135°C - Max surface temperature 135°C (-20°C ≤ Ta ≤ 55°C)

Product #:	Description:
TR-819A	TR-819A IS PAPR Starter Kit includes TR-802E powered air turbo unit, TR-830 battery, BT-30 Breathing Tube, TR-6600 Pre filter, TR-627 Easy Clean Belt, TR-971 Airflow indicator, TR-641A single station battery charger and TR-838 battery attachment tool. Does NOT include a filter, filter cover, or headtop/hood which are required to be purchased separately
7000128239	TR-800 Powered Air turbo unit including an TR-971 airflow indicator

Range of Accessories Available



For spare parts and accessories refer to the Part & Accessories Guide.



M-307



M-307CAP

3M™ Versaflo™ M-300 Series High Impact Helmet

Product #:	Description:
M-306	Versaflo Helmet with coated visor and comfort faceseal
M-307	Versaflo Helmet with coated visor and flame resistant faceseal
M-307CAP	M-307 helmet with M-940 Cap lamp bracket kit attached and reflective tape

The Versaflo M-300 Series High Impact Helmet provides integrated protection from specific respiratory, head, eye and face hazards with optional hearing protection. Two options for different applications:

- M-306 features a general purpose faceseal for dusts, sprays and chemical processing.
- M-307 features a flame resistant faceseal for applications where hot particles may be present



TR-600 & 800+ Filters & Filter Covers

Product #:	Description:
TR-6310ANZ	PAPR-A1P3 Filter For Organic Vapours and particulates
TR-6300FC	Filter Cover to Suit Versaflo™ TR -6310ANZ
TR-6580ANZ	PAPR-A1B1E1HgP3 Filter For Organic Vapours, Acid Gases, Inorganic gases and Mercury vapour including a PAPR-P3 Filter. Suitable for nuisance levels of ammonia. Nuisance level are those underneath the workplace exposure standard (WES)
TR-6500FC	Filter Cover to Suit Versaflo™ TR -6580ANZ
TR-6710ANZ	PAPR-P3 Particulate High Efficiency Filter Versaflo™
TR-6700FC	Filter Cover to Suit Versaflo™ TR-6710ANZ
TR-6820ANZ	PAPR-P3 with nuisance level odour. Nuisance level are those underneath the workplace exposure standard (WES)
TR-6800FC	Filter Cover to Suit Versaflo™ TR -6820ANZ
TR-6600	Versaflo™ Particulate Pre-Filter
TR-662	Spark Arrestor TR-662 to suit Versaflo™ TR-600

NOTE: TR-619A & TR-819A Starter Kits do NOT come with any filter or filter cover.

What does personal protection look like?

In several mining processes, workers are exposed to high levels of noise and respiratory hazards simultaneously. By combining two technology platforms, 3M can help provide both hearing and respiratory protection – enabling clear communication without removal of PPE.

- ▶ Crushing and grinding
- ▶ Electrowinning
- ▶ Vehicle maintenance
- ▶ Welding maintenance
- ▶ Sampling lab
- ▶ Roasting
- ▶ Smelting



3M™ SecureFit™ Hard Hats

- ▶ Ratchet suspension system featuring patented 3M™ Pressure Diffusion Temple technology that flexes and self-adjusts to the size of the wearer's head, reducing forehead pressure and increasing comfort for all-day wear
- ▶ Works well with a variety of 3M™ Protective Earmuffs and other accessories



3M™ SecureFit™ Protective Eyewear

- ▶ Anti-fog/anti-scratch coatings available, including 3M™ Scotchgard™ Protector coating
- ▶ Temples flex and self-adjust to the size of the wearer's head
- ▶ The flat and flexible temple design combines well with 3M™ Protective Earmuffs



3M™ Secure Click™ Half-Face and Full-Face Respirators

- ▶ Speaking diaphragm helps provide improved communication while working
- ▶ Filters/cartridges designed for easy breathability
- ▶ Exhalation valve helps direct exhaled breath and moisture downward
- ▶ Secure Click connection helps provide confidence that filters/cartridges are installed properly



3M™ PELTOR™ Protective Communications*

- ▶ Protect your hearing in noisy environments and hear ambient sounds below 82dB
- ▶ Improve ability to communicate with nearby colleagues, as well as to hear warning alerts, oncoming vehicles, or sounds from machines and processes

*3M™ PELTOR™ WS™ LiteCom PRO III EX Headset is ANZEx Certified.

Respiratory Protection Solutions



3M™ Secure Click™ Half Facepiece Reusable Respirator with Speaking Diaphragm HF-800 Series

Product#:	Description:
HF-801SD	Small with speaking diaphragm for use with secure click filters and cartridges
HF-802SD	Medium speaking diaphragm for use with secure click filters and cartridges
HF-803SD	Large with speaking diaphragm for use with secure click filters and cartridges

3M™ Secure Click™ Half Facepiece Reusable Respirator HF-800 Series helps protect against particulates and/or a wide variety of gases and vapors when used with approved 3M™ Secure Click™ filters and cartridges.

This facepiece comes with many innovative features that make it the next generation in comfort, breathability and simplicity.



3M™ Half Facepiece Reusable Respirator 7500 Series

Product#:	Description:
7501	Small for use with 3M™ Bayonet Filters & Cartridges
7502	Medium for use with 3M™ Bayonet Filters & Cartridges
7503	Large for use with 3M™ Bayonet Filters & Cartridges

3M™ 7500 Series reusable respirators are made from an advanced silicone material to help give your crew comfort throughout their shifts. The adjustable features are designed to help reduce pressure and tension points on the wearer's face, while the adjustable head cradle provides a secure, personalized fit.



3M™ Rugged Comfort Quick Latch Half Facepiece Reusable Respirator 6500QL Series

Product#:	Description:
6501QL	Small for use with 3M™ Bayonet Filters & Cartridges
6502QL	Medium for use with 3M™ Bayonet Filters & Cartridges
6503QL	Large for use with 3M™ Bayonet Filters & Cartridges

3M™ 6500QL Series has a resilient silicone faceseal, offering extended facepiece life, while ensuring optimal fit with the use of the adjustable head cradle and straps. The facepiece features our proprietary quick latch design, which offers an easy, one-hand

touch drop-down mechanism for putting the facepiece on and taking it off while moving in and out of contaminated areas.



3M™ Secure Click™ Full Facepiece Reusable Respirator FF-800 Series

Product#:	Description:
FF-801	Small, for use with 3M Secure click filters and cartridges
FF-802	Medium, for use with 3M Secure click filters and cartridges
FF-803	Large, for use with 3M Secure click filters and cartridges

3M™ Secure Click™ Full Facepiece Reusable Respirator FF-800 Series helps protect against particulates and/or a

wide variety of gases and vapors when used with approved 3M Secure Click filters and cartridges. This facepiece comes with exciting features that make it 3M's next generation in comfort, breathability and simplicity.



3M™ Full Facepiece Reusable Respirator 6000 Series

Product#:	Description:
6700	Small for use with 3M™ Bayonet Filters & Cartridges
6800	Medium for use with 3M™ Bayonet Filters & Cartridges
6900	Large for use with 3M™ Bayonet Filters & Cartridges

3M™ Full Facepiece Respirator 6000 Series is designed to help protect your workforce from certain airborne

contaminants when used with approved 3M cartridges and filters, the 3M™ Full Facepiece Reusable Respirator 6000 Series is a reliable and easy to use solution in a variety of work environments and applications.

Eye Protection Solutions



3M Protective Eyewear and Protective Goggles are designed to deliver comfort and performance, helping to keep workers safe. Featuring optional 3M™ Scotchgard™ Anti-fog Coating, which resists fog up to 11x longer than traditional 3M anti-fog coating, and proprietary 3M™ SecureFit™ Pressure Diffusion Temple technology that self-adjusts to the wearer's head size and shape.



**3M™ SecureFit™
Protective Eyewear 500 Series**

Product#:	Description:
SF501AF-BLK	Clear
SF501SGAF-BLK-FM	Clear, SGAF, Foam Gasket
SF507SGAF-BLK	I/O Gray, SGAF

3M™ SecureFit™ Protective Eyewear 500 Series features a contemporary lens design coupled with adjustable ratchet temples and 3M™ Pressure Diffusion Temple (PDT) technology to help provide a more personalized fit. This sporty eyewear also offers optional foam gaskets, a variety of lens tints and models with Scotchgard™ Protector Anti-Fog Coating.



**3M™ SecureFit™
Protective Eyewear 400 Series**

Product#:	Lens:
SF401AF-AS	Clear
SF402AF-AS	Grey
SF410AS-AS	Indoor/Outdoor Mirror

3M™ SecureFit™ Protective Eyewear 400 Series features 3M™ Pressure Diffusion Temple (PDT) technology, a soft one-piece nose bridge, dual-injected temples and a range of options, including various lens tints, brow guards, premium coatings, readers and more. Optional foam gasket helps reduce eye exposure to particulate hazards while providing added comfort and cushioning.



**3M™ GoggleGear™
Protective Eyewear 500 Series**

Product#:	Description:
GG501NSGAF	Clear, SGAF, with Neoprene Strap

3M™ GoggleGear™ Protective Goggles 500 Series features a low-profile design with adjustable strap, indirect ventilation, and 3M™ Scotchgard™ Protector Anti-Fog/Anti-Scratch Coating. Additionally, these goggles are D3 (droplet and splash) and D4 (dust) rated.

Head Protection Solutions



We design and manufacture hard hats and accessories to meet a diverse spectrum of needs. From safety helmets for working at height, to full-brim hard hats and solutions for working in elevated temperatures, 3M offers consistently reliable products.



3M™ HH40 Full Brim Non-Vented Safety Helmet ABS

Product #: HH40M:WH

The Australian made 3M™ HH40 Full Brim Safety Helmet Non-Vented ABS (Type 1) with comfortable 6 point terylene head harness is the central building block providing users with a face, head and hearing certified protection system if needed. It is designed to protect wearers from numerous hazards and complements a number of accessories. A full brim helmet for extra sun or splash protection.



3M™ TA570 Safety Helmet ABS Vented

Product #: TA570M:WH

The Australian made TA570 is a vented ABS Type 1 safety helmet ideal for general industrial, construction and mining applications. The unique crown cooling vented safety helmets ensure cooler and more comfortable protection in hot humid conditions. The safety helmet design allows multiple branding and reflective tape options

Fall Protection Solutions



Working at heights requires comprehensive protection. 3M offers a wide range of personal fall arrest systems to help protect those working at heights, in addition to dropped objects protection for tools to help protect those working below.



3M™ DBI-SALA Exofit NEX Riggers Harness with Stainless Steel Hardware

Product #: 603L1020

Ideal for use as a professional general purpose harness in rigging, ladder climbing and confined space access work.

Front and rear lightweight Stainless Steel D-Rings, Stainless Steel QuickConnect Buckles, Vertical torso adjuster, nonslip hybrid comfort padding, suspension trauma straps, confined space attachment points, impact indicator.



3M™ DBI-SALA® Nano-Lok™ LE Twin Leg Direct Connect Self Retracting Lifeline

Product #: 3500255

3M™ DBI-SALA® Nano-Lok™ LE Self-Retracting Lifeline's compact design is easily worn on the user's back and stays out of the way; it can also be used as a lanyard replacement. Whether the application requires single or twin leg configurations, mounting to an overhead anchor, or connection directly to

a harness, there are numerous models to choose from to suit a variety of applications. 3M™ DBI-SALA® Nano-Lok™ LE Self-Retracting Lifeline is designed to lock quickly stopping a fall and providing protection at low heights. In addition, tension is maintained on the lifeline, which helps reduce potential dragging and trip falls.



3M™ DBI-SALA® Sealed-Blok™ Self Retracting Lifeline

Product #: 3400967

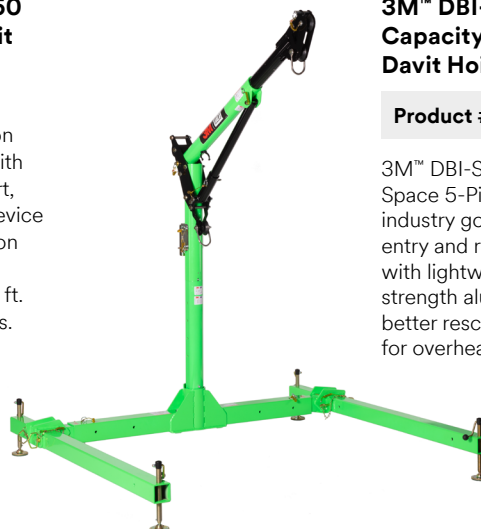
3M™ DBI-SALA® Sealed-Blok™ Self-Retracting Lifeline (SRL) incorporates a patented concept that helps separate components, such as the motor spring and brake, from foreign elements such as grease, moisture, and dirt. The 3M™ DBI-SALA® Sealed-Blok™ Self-Retracting Lifeline is IP-69K rated to provide protection against ingress of dust and high-temperature high-pressure water, for use in extreme environmental conditions. These lifelines are available in Overhead, Retrieval, and RSQ / Rescue SRL configurations.



3M™ DBI-SALA® Rollgliss™ R550 Rescue and Descent Device Kit with Rescue Wheel

Rollgliss™ R550 offers the choice of controlled descent rescue, evacuation or the versatility of assisted rescue with lifting capabilities. This state of the art, fully automatic controlled descent device can be used for rescue and evacuation from heights up to 1,640 ft. (500 m) for one user 310 lbs. (141 kg) or 574 ft. (175 m) for two users totaling 620 lbs. (282 kg).

[Click here for Technical Data Sheet](#)



3M™ DBI-SALA® High Capacity Confined Space 5-Piece Davit Hoist System

Product #: 8000133

3M™ DBI-SALA® High Capacity Confined Space 5-Piece Davit Hoist System is the industry gold standard for confined space entry and retrieval applications. Built tough with lightweight materials including high-strength aluminum, the davit pivots for better rescue angles, and can easily adjust for overhead clearance restrictions.

[Click here for Technical Data Sheet](#)

Self-Contained Breathing Apparatus (SCBA)



For certain hazardous environments or rescue situations, atmosphere-supplying respiratory protection such as an Emergency Escape Breathing Device (EEBD), Self-Contained Breathing Apparatus (SCBA) or Supplied Air Respirator (SAR) may be required. 3M offers a range of solutions to help protect workers during emergencies.

Emergency Escape Breathing Device (EEBD):

An Emergency Escape Breathing Device (EEBD) is suitable for quick escape from hazardous industrial environments, helping ensure protection in escape situations.



3M™ Scott ELSA Emergency Life Support Apparatus

Product #: 2009419



3M™ Scott Flite COV Airline Breathing Apparatus

Product #: 2031077

SCBA and Supplied Air Respirator with Escape Cylinder:

Self-Contained Breathing Apparatus (SCBA) and positive pressure Supplied Air Respirator (SAR) with a combined escape cylinder are used for different types of operations and/or for emergency situations in mining operations. These may be used when atmospheric contaminants are unknown, Immediately Dangerous to Life or Health (IDLH), or when concentrations are potentially unstable.



3M™ Scott ProPak-f-Ez-Flo T2 SCBA

Product #: 2031985



3M™ Scott Sigma 2 T2 SCBA

Product #: 2023034



3M™ Scott Contour 100 SCBA

Product #: 2009236



3M™ Scott Contour 300 SCBA

Product #: 2017794

Face Mask:



3M™ Scott Promask Positive Pressure Face Mask

Product #: 013190



3M™ Scott Vision 3 PP Full Face Mask

Product #: 1071671

Validate your protection



Fit testing (or fit validation) is a procedure to help verify the PPE selected is providing the expected level of protection. Fit can have a significant impact on protection, therefore, fit testing is a best practice and often is required by standards and regulations.

There are many factors that affect how well PPE fits the individual wearer, including size and shape of the wearer and other equipment or clothing worn at the same time.

3M has resources that can help you test and validate fit for a variety of PPE:



Respiratory fit testing

A respirator needs to fit and seal to a wearer's face. Otherwise, contaminated air can pass around the respirator and into the wearer's breathing zone.

Applies to all tight-fitting respirators, including:

- ▶ Filtering facepiece particulate respirators
- ▶ Half and full-facepiece respirators fitted with filters and/or cartridges
- ▶ Tight-fitting facepieces connected to powered or supplied air turbo units or used with breathing apparatus

3M.com.au/respiratorfit
3M.com.nz/respiratorfit



Hearing fit testing

If earplugs or earmuffs do not fit the wearer's ear canal or head well, external noise may penetrate the inner ear, which can lead to noise-induced hearing loss.

Applies to:

- ▶ Earplugs
- ▶ Earmuffs
- ▶ Electronic earplugs and headsets

3M.com.au/EARFit
3M.com.nz/EARFit



Eyewear fit validation

Eye protection needs to provide a good field of view, security of fit, and good coverage with minimal gaps between eyewear and the wearer's face. Safety goggles should be tight fitting without any gaps. The eyewear fit validation system from 3M is intended for standard safety glasses.

Applies to all protective eyewear, protective goggles and some visors:

- ▶ Protective eyewear
- ▶ Protective goggles

[3M™ Eyewear Fit System AU](https://3M.com.au/EyewearFitSystemAU)
[3M™ Eyewear Fit System NZ](https://3M.com.au/EyewearFitSystemNZ)

3M



Fit testing at your fingertips

Help fit testers and wearers follow the exact fit test protocol at every step of the process with the tap of a button.

[Download now](#)

For advice and support implementing a fit testing program, please contact your local 3M representative.

CONTACT US

3M

3M Australia Pty Ltd
Bld A, 1 Rivett Road
North Ryde, NSW 2113
Customer Services: 1300 363 565
Email: 3msupport.safety.au@mmm.com
3M.com.au/ppesafety

3M New Zealand Limited
94 Apollo Drive
Rosedale, Auckland 0632
Customer Services: 0800 252 627
Email: 3msupport.safety.nz@mmm.com
3M.com/nz/ppesafety

© 3M 2024. All rights reserved. 3M, Secure Click, DBI-SALA, ExoFit NEX, Nano-Lok, Sealed-Blok, Rollgliss, PELTOR, WS, ProTac, TWIN CUP, SecureFit, GoggleGear, Speedglas, and Versaflo x are trademarks of 3M Company. The Bluetooth wordmark and logos are registered trademarks owned by Bluetooth SIG, Inc. Product and Content accurate at the time of publication. Products and product information is subject to change. Application images may show product not available in ANZ.