

Applications

OIL & GAS

AEROSPACE

METAL FABRICATION

AUTOMOTIVE

▶ Threaded pipes and other tubular goods

▶ Rotors, shrouds, buckets, ducting titanium, turbine blades

▶ Various machined parts mild steel, stainless steel and TIG weld blending

▶ Machined gears, other components mild steel, hardened steel


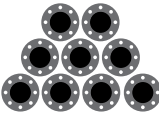






Try Scotch-Brite™ Deburr & Finish PRO — and see the performance advantages!

COMPARING COST-OF-OWNERSHIP

These are typical real-world results that customers have obtained using Scotch-Brite™ Deburr & Finish PRO Unitized Wheels compared to traditional deburring wheels.

Contact your local 3M representative to see how new Scotch-Brite™ Deburr & Finish PRO wheels can help you improve productivity!

	Traditional Deburring Wheel	NEW Scotch-Brite™ Deburr & Finish PRO
Parts Per Wheel		
Labor Per Piece	00:50 seconds	00:38 seconds
Reject Rate		
Operator Feel		
Customer Productivity	\$\$	\$\$\$\$\$\$

Do you use flap brushes, cartridge rolls or other specialty abrasives in your process? You may be able to improve performance and productivity by switching to Scotch-Brite™ Deburr & Finish PRO wheels!

Potential advantages:

- ▶ Longer life
- ▶ Faster burr removal
- ▶ Smoother feel
- ▶ Less dusting & debris
- ▶ Finer finish
- ▶ Maintains shape

Learn more about Scotch-Brite™ Wheels at go.3M.com/SBWheelsIN



3M India Limited
48-51 Electronic City,
Hosur Road, Bengaluru,
Karnataka- 560100

Phone 1-800-425-3030
Web go.3M.com/INabrasives

Watch Video



go.3M.com/SBDVideoIN

Product Selection and Use: Many factors beyond 3M's control and uniquely within user's knowledge and control can affect the use and performance of a 3M product in a particular application. As a result, customer is solely responsible for evaluating the product and determining whether it is appropriate and suitable for customer's application, including conducting a workplace hazard assessment and reviewing all applicable regulations and standards (e.g., OSHA, ANSI, etc.). Failure to properly evaluate, select, and use a 3M product and appropriate safety products, or to meet all applicable safety regulations, may result in injury, sickness, death, and/or harm to property. **Warranty, Limited Remedy, and Disclaimer:** Unless a different warranty is specifically stated on the applicable 3M product packaging or product literature (in which case such warranty governs), 3M warrants that each 3M product meets the applicable 3M product specification at the time 3M ships the product. 3M MAKES NO OTHER WARRANTIES OR CONDITIONS, EXPRESS OR IMPLIED, INCLUDING, BUT NOT LIMITED TO, ANY IMPLIED WARRANTY OR CONDITION OF MERCHANTABILITY, FITNESS FOR A PARTICULAR PURPOSE, OR ARISING OUT OF A COURSE OF DEALING, CUSTOM, OR USAGE OF TRADE. If a 3M product does not conform to this warranty, then the sole and exclusive remedy is, at 3M's option, replacement of the 3M product or refund of the purchase price. **Limitation of Liability:** Except for the limited remedy stated above, and except to the extent prohibited by law, 3M will not be liable for any loss or damage arising from or related to the 3M product, whether direct, indirect, special, incidental, or consequential (including, but not limited to, lost profits or business opportunity), regardless of the legal or equitable theory asserted, including, but not limited to, warranty, contract, negligence, or strict liability.

3M, Scotch-Brite™ and Roloc™ are trademarks of 3M Company. Used under license by 3M subsidiaries and affiliates. Please recycle. Printed in India. © 3M 2024. All rights reserved. 61-5002-8402-3



Scotch-Brite™ Deburr & Finish PRO Unitized Wheels
Now available in 8C MED+ and 9C XCRS+!

NOT EVERYONE
LEAVES THEIR
SIGNATURE
WITH A PEN.



SCOTCH-BRITE™ DEBURR & FINISH PRO UNITIZED WHEELS

Make your mark with the wheels that generations of metalworkers have chosen before you - Scotch-Brite™.

✓ UNCOMPROMISING
QUALITY

✓ LASTS LONG,
FINISHES STRONG

✓ REPEATABLE
RESULTS

3M

CORNERS AREN'T MEANT TO BE CUT. JUST DEBURRED, SANDED AND POLISHED.

Scotch-Brite™ Deburr & Finish PRO Unitized Wheels are ideal for both OEM use and for manufacturing and maintenance. They are soft, to reduce defects, but tough at the same time, for fewer wheel changeouts. These hard-working, high-performance products quickly polish, finish, blend and deburr with minimal loading or change to part geometry — helping you get the job done faster.

FASTER, MORE CONSISTENT PERFORMANCE!

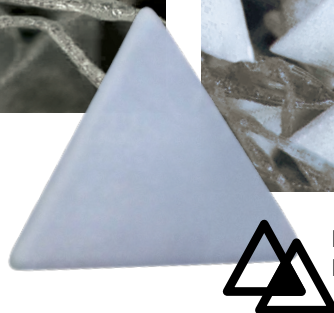
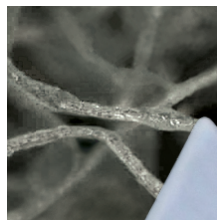
- Remove burrs 30 to 50% faster than other Scotch-Brite™ wheels
- Up to 3x longer wheel life in deburring applications
- Minimal dust and debris — less dust equals less cleanup
- Improved operator “feel”
- Minimized overcutting — results in fewer rejects

DONE RIGHT. DONE ONCE.

THE SCIENCE OF 3M™ PRECISION-SHAPED GRAIN*

Traditional nonwoven abrasive products are constructed from particles of irregular-shaped abrasive materials, such as aluminum oxide, bound to a nylon web.

In our new Scotch-Brite™ Deburr & Finish PRO Unitized Wheels, conventional abrasive particles have been replaced with our proprietary ceramic precision-shaped grain. The hardness of the ceramic material, combined with the self-sharpening grain, is designed to provide longer life and help you get the job done faster — without sacrificing the smooth feel and control you expect from Scotch-Brite™ abrasives. Ideal for the substrates copper, inconel, titanium, stainless steel, mild steel and aluminum.



NOW WITH 3M
PRECISION-SHAPED GRAIN

*This technology is included in our Scotch-Brite™ Deburr & Finish PRO Unitized Wheels 4C, 6C, 8C and 9C products.

ORDERING INFORMATION

Scotch-Brite™ Roloc™ TR Deburr & Finish PRO Unitized Wheel

UPC	Size (inches) (diameter × thickness × center hole)	Max RPM	Density	Grade	Qty/ Case
61500302494	2 × 1/4 × NH	22,100	2S	FIN	60
61500302510	3 × 1/4 × NH	15,100	2S	FIN	40
61500301561	2 × 1/4 × NH	22,100	4C	MED+	60
61500301264	2 × 1/8 × NH	22,100	6C	MED+	120
61500301272	2 × 1/4 × NH	22,100	6C	MED+	60
61500301579	3 × 1/4 × NH	15,100	4C	MED+	40
61500301298	3 × 1/8 × NH	15,100	6C	MED+	40
61500301280	3 × 1/4 × NH	15,100	6C	MED+	40
61500302239	2 × 1/4 × NH	22,100	8C	CRS+	60
61500302221	3 × 1/8 × NH	15,100	8C	CRS+	40
61500302247	3 × 1/4 × NH	15,100	8C	CRS+	40

Scotch-Brite™ Deburr & Finish PRO Unitized Disc

UPC	Size (inches) (diameter × thickness × center hole)	Max RPM	Density	Grade	Qty/ Case
61500152378	4-1/2 × 7/8	11,000	2S	FIN	5
61500301603	4-1/2 × 7/8	12,100	6C	MED	5
61500302254	4-1/2 × 7/8	12,100	8C	CRS+	5

Scotch-Brite™ Deburr & Finish PRO Unitized Wheel

UPC	Size (inches) (diameter × thickness × center hole)	Max RPM	Density	Grade	Qty/ Case
61500400314	1 × 1 × 3/16	30,100	2S	FIN	50
61500400322	2 × 1/4 × 1/4	16,100	2S	FIN	60
61500400330	2 × 1/2 × 1/4	16,100	2S	FIN	30
61500400348	2 × 3/4 × 1/4	16,100	2S	FIN	20
61500400280	3 × 1/4 × 1/4	12,100	2S	FIN	40
61500400306	3 × 1/2 × 1/4	10,000	2S	FIN	20
61500400355	3 × 3/4 × 1/4	10,000	2S	FIN	20
61500400298	3 × 1 × 1/4	10,000	2S	FIN	10
61500400371	6 × 1/2 × 1	5,000	2S	FIN	4
61500400363	6 × 1 × 1	5,000	2S	FIN	2
61500300670	1 × 1 × 3/16	35,100	6C	MED+	50
61500301033	2 × 1/8 × 1/4	22,100	6C	MED+	60
61500300688	2 × 1/4 × 1/4	22,100	6C	MED+	60
61500300696	2 × 1/2 × 1/4	22,100	6C	MED+	30
61500300704	2 × 3/4 × 1/4	22,100	6C	MED+	20
61500301041	2 × 1 × 1/4	22,100	6C	MED+	10
61500300712	3 × 1/8 × 1/4	18,100	6C	MED+	40
61500301520	3 × 1/4 × 1/4	18,100	4C	MED+	40
61500300548	3 × 1/4 × 1/4	18,100	6C	MED+	40
61500301512	3 × 1/2 × 1/4	18,100	4C	MED+	20
61500300571	3 × 1/2 × 1/4	18,100	6C	MED+	20
61500300720	3 × 3/4 × 1/4	15,100	6C	MED+	20
61500300555	3 × 1 × 1/4	15,100	6C	MED+	10
61500301504	4 × 1 × 1/4	12,100	6C	MED+	5
61500314051	1 × 1 × 3/16	35,100	8C	CRS+	50
61500314119	2 × 1/8 × 1/4	22,100	8C	CRS+	60
61500314069	2 × 1/4 × 1/4	22,100	8C	CRS+	60
61500314077	2 × 1/2 × 1/4	22,100	8C	CRS+	30
61500314085	2 × 3/4 × 1/4	22,100	8C	CRS+	20
61500314093	3 × 1/8 × 1/4	18,100	8C	CRS+	40
61500314028	3 × 1/4 × 1/4	18,100	8C	CRS+	40
61500314044	3 × 1/2 × 1/4	18,100	8C	CRS+	20
61500314143	3 × 1/2 × 3/8	18,100	8C	CRS+	20
61500314101	3 × 3/4 × 1/4	15,100	8C	CRS+	20
61500314135	6 × 1/2 × 1	7,500	8C	CRS+	4

Typical use: on backstand or bench motor

61500301231	5 × 1/4 × 1/4	9,000	6C	MED+	10
61500301249	5 × 1/2 × 1/4	9,000	6C	MED+	5
61500301447	6 × 1/8 × 1	7,500	6C	MED+	16
61500301454	6 × 1/4 × 1	7,500	6C	MED+	8
61500301199	6 × 1/2 × 1/2	7,500	6C	MED+	4
61500301215	6 × 1/2 × 1	7,500	6C	MED+	4
61500301421	6 × 1 × 1/2	7,500	6C	MED+	2
61500301207	6 × 1 × 1	7,500	6C	MED+	2

3M™ Tools and Accessories for use with Roloc™ Wheels

UPC	Product Description	Max RPM	Qty/ Case
60440242455	3M™ Disc Sander, 1/2 HP, 2–3"	12,000	1
60440242448	3M™ Disc Sander, 1/2 HP, 2"	20,000	1
60440243503	3M™ Disc Sander, 1 HP, 3"	15,000	1
60440237778	3M™ Roloc™ + Holder	25,000	5

3M™ Tools for use with 4-1/2" Unitized Discs

UPC	Product Description	Max RPM	Qty/ Case
60440242109	3M™ Grinder T27, 1-1/2 HP, 4-1/2"	12,000	1

3M™ Tools and Accessories for use with Wheels with Center Hole

UPC	Product Description	Wheel Thickness	Max RPM	Qty/ Case
60440242513	3M™ Die Grinder; 1/2 HP		18,000	1
60440247769	3M™ Extended Shaft Die Grinder; 1/2 HP		18,000	1
61986508259	936 Unitized Mandrel for 2-1/16X1/4X3/4		22,200	5
60440242638	28847 Unitized Wheel Mandrel 1-1/2" × 1/4" × 3/4"	1/8"	22,100	5
60440242646	28848 Unitized Wheel Mandrel 1-5/8" × 1/4" × 3/4"	1/4"	22,100	5
60440242653	28849 Unitized Wheel Mandrel 1-7/8" × 1/4" × 3/4"	1/2"	22,100	5
60440242661	28850 Unitized Wheel Mandrel 2-1/8" × 1/4" × 3/4"	3/4"	18,100	5
60440242679	28851 Unitized Wheel Mandrel 2-3/8" × 1/4" × 3/4"	1"	18,100	5

► AVAILABLE IN 6 DENSITIES:

- 2S FIN for polishing and finishing
- 4C MED+ for finishing and blending
- 6C MED+ for blending and deburring
- 8C MED+ for blending and deburring
- 8C CRS+ for heavy deburring or lite weld removal
- 9C XCRS+ for heavy deburring, weld refinement and removal

