

# 3M™ Pistonz™ Push-to-Fit Earplugs

## Technical Data Sheet

### Product description

3M™ Pistonz™ Push-to-Fit earplugs feature a specially formulated ultra soft foam ear tip to help with comfort and a stem designed to have the right amount of firmness to help with ear tip insertion. With a metallic appearance, these earplugs are a unique option for users who want to stand out.

### Features

- Unique piston-shaped ear tip design fits most ear canals
- No need to touch the ear tips during earplug insertion, helping to keep ear tips stay clean longer
- Insertion stem helps eliminate the need to touch the tip when fitting
- Available in both corded and uncorded versions

### Applications

3M™ Pistonz™ earplugs are ideal for a wide range of industrial workplace and leisure environments. Examples of typical applications include:

- Automotive
- Body shop repair
- Construction
- Textile manufacture
- Chemical & Pharmaceutical manufacture
- Woodworking
- Engineering & Metal Fabrication

### Standards

These hearing protectors have been produced to comply with the requirements of the Australian /New Zealand Standard AS/NZS 1270:2002.



### Laboratory Attenuation Values

Frequency (Hz)	125	250	500	1000	2000	4000	8000
Mean (dB)	24.3	24.8	26.5	26.0	31.5	41.2	44.4
SD (dB)	4.7	4.7	4.7	5.7	4.8	5.9	5.4
Mean - SD (dB)	19.6	20.1	21.8	20.3	26.7	35.3	39.0

SLC<sub>80</sub> 25dB (Class 4)

3M strongly recommends personal fit testing of hearing protectors. Research suggests that users may receive less noise reduction than indicated by the attenuation label value(s) on the packaging due to variation in fit, fitting skill, and motivation of the user.

Hearing protector Class 4 tested to AS/NZS 1270. When selected, used and maintained as specified in AS/NZS 1269, this protector may be used in noise 100dB(A) to less than 105dB(A), assuming an 85dB(A) criterion.

A lower criterion may require a higher protector class.

**Mean** = Mean attenuation value derived from testing in accordance with AS/NZS 1270:2002.

**SD** = Standard Deviation derived from testing in accordance with AS/NZS 1270:2002.

**Mean-SD** = Mean attenuation value minus Standard Deviation  
**SLC80** = Single number rating commonly used in Australia and New Zealand to compare acoustic performance of hearing protectors. The subscript '80' indicates that in well managed hearing protector programs, the protection provided is expected to equal or exceed the SLC80 in 80% of protector-wearer noise spectrum combinations.

**Class** = A simplified process for selecting hearing protectors based on the wearers 8-hour equivalent continuous A-weighted sound pressure level.

## Materials

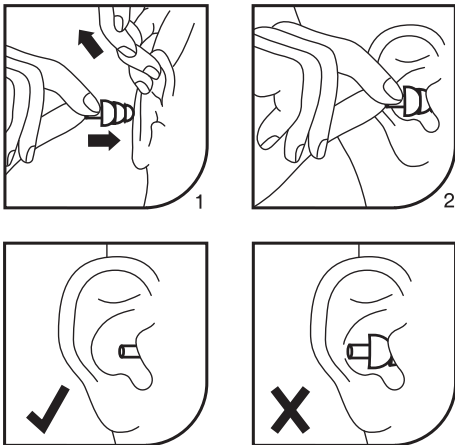
The following materials are used in the manufacture of this product.

Component	Material
Ear tips	Polyurethane foam
Stem	PVC
Cord	PVC

## Fitting Instructions

Always fit your ear plugs before entering a noise hazard area. To properly insert push-to-fit earplugs, follow the traditional method of using 2 hands, one to pull on the outer ear to help straighten the ear canal and the other to push the earplug into the ear. Before fitting inspect the product to ensure that it is not torn or damaged. Ensure hair and jewellery do not interfere with fitting. See Figures 1-2.

1. Insert piston-shaped ear tip into ear canal while pulling ear outward and upward with opposite hand. (Fig. 1)
2. Hold pressure on stem for a few seconds while inserting. If needed, push stem from a different direction to make insertion easier. (Fig. 2)
3. The entire earplug tip should be inside the ear canal.
4. To check fit pull earplug stem gently. Earplug should not come out of the ear easily. If it does, remove earplug and repeat fitting.



## Fit Check

When ear plugs are correctly inserted your own voice should sound hollow and sounds around you should not sound as loud as before. Listen to steady loud sound with earplugs in both ears. Cover ears with tightly cupped hands. Noise should sound about the same whether or not ears are covered. Re-check the fit often during wear time. If earplugs become loose the actual protection obtained may be significantly reduced. To re-fit follow steps 1-3 above.

If you cannot obtain a good fit, try a different size or type of hearing protector. If you are unable to fit these earplugs correctly and comfortably in both ears, contact your safety officer or 3M for further advice.

## Storage

- Store in area free of contamination
- Storage Temperature must be kept between -20°C and 40°C.
- Storage humidity <85% RH
- Product must be stored in original packaging.
- Regardless of storage history, always inspect hearing protectors before use and discard immediately if worn or damaged.

## Shelf-Life

- 3M™ hearing protector product lifetimes assume the above storage conditions are met.
- Product lifetime = 3 years from date of manufacture as printed on the product packaging.

NOTE: Some locations may have regulations that include specific product lifetime requirements for hearing protectors, which should take precedence over these 3M™ recommendations if they are more restrictive.

## Ordering Information

3M Order Code	Model #	Description
70071561487	P1400	3M™ Pistonz™ Uncorded
70071561495	P1401	3M™ Pistonz™ Corded

### 3M™ E-A-Rfit™ Dual-Ear Validation System Test Probe

Not available

## WARNING!

These hearing protectors help reduce exposure to hazardous noise and other loud sounds. Misuse or failure to wear hearing protectors at all times that you are exposed to noise may result in hearing loss or injury. For proper use, see supervisor, User Instructions, or call 3M TechAssist Helpline 1800 024 464.

Always ensure the hearing protection device (HPD) is:

- Suitable for the application;
- Fitted correctly;
- Worn during all periods of exposure;
- Replaced when necessary.

**Important Notice:** To the extent permitted by law, 3M shall not be liable for any loss or damage including any loss of business, loss of profits, or for any indirect, special, incidental or consequential loss or damage arising from reliance upon any information herein provided by 3M. Nothing in this statement will be deemed to exclude or restrict 3M's liability for death or personal injury arising from its negligence.



**3M Australia Pty Ltd**  
**Personal Safety Division**  
Bldg A, 1 Rivett Road  
North Ryde NSW 2113

TechAssist Helpline 1800 024 464  
Customer Service 1300 363 565  
Email [techassist@mmm.com](mailto:techassist@mmm.com)  
Web [www.3M.com.au/ppesafety](http://www.3M.com.au/ppesafety)

**3M New Zealand Ltd**  
**Personal Safety Division**  
94 Apollo Drive, Rosedale  
Auckland 0632

TechAssist Helpline 0800 364 357  
Customer Service 0800 252 627  
Email [techassist@mmm.com](mailto:techassist@mmm.com)  
Web [www.3M.com/nz/ppesafety](http://www.3M.com/nz/ppesafety)

3M and Pistonz are trademarks of 3M.  
All other trademarks are property of their  
respective owner.  
© 3M 2023. All rights reserved.  
AV011503867