

Personal Safety

• Comfort Particle Mask P3



• Comfort Goggles



• Reusable Overall



1 Cleaning of the surface

- Follow paint company recommendations for appropriate surface cleaning techniques and cleaner

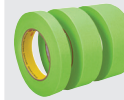


3M™ Professional Panel Wipes



2 Partly covering of the car

- Prepare the larger area that you need to respray including applications of back masking, trim masking tapes and aperture masking.



3M™ Scotch® Masking Tape 233+



3M™ Soft Edge Foam Masking Tape

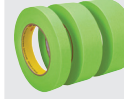


3M™ Trim Masking Tape



3 Covering the vehicle

- Cover the vehicle as soon as possible. This provides protection from contamination from any vehicles being worked on nearby.
- Cut the masking film around the repair area in preparation for filler and primer and fix the film with 3M Masking Tapes.



3M™ Scotch® Masking Tape 233+



3M™ Overspray Protective Sheeting

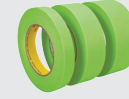


4 Roughly covering for primer application

- For best results, apply 3M™ Soft Edge Foam Masking Tape on top of the 3M Masking tape to allow a smooth transition of primer edges.
- Note: Do not "Hard Edge" mask for primer application! This generates surface swelling due to the concentration of solvents on the tape edges and makes the following sanding steps difficult to complete properly.



3M™ Soft Edge Foam Masking Tape

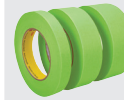


3M™ Scotch® Masking Tape 233+



5 Fine covering -preparation for paint application

- Before applying the base and clear coat, further cut the masking film and attach it to previous contour and aperture masking.
- Primer sanding



3M™ Scotch® Masking Tape 233+



6 Final Masking Before Painting

- Degrease the surface and adjacent panels.
- Mask any other areas such as rubber, trims etc that have not previously been masked.
- Where a sharp edge is required, use a premium fine line tape.



3M™ Fine Line Masking Tapes 471



7 De-masking

- For best results, removal of masking tapes and film is best done when the vehicle has left the oven and still warm.
- Always remove masking tape by pulling in a right angle to the surface. A flatter or sharper angle has a higher risk of leaving adhesive residue on the surface.
- Tip: Use of premium masking tapes results in a lower tendency of the tape to leave adhesive residue behind, tear, paint flake or bleed through.