



Prevena Restor™

Postoperative Recovery

Management of total knee arthroplasty revision with 3M™ Prevena Restor™ Arthro•Form™ Incision Management System

Yavonne L. Johnson, PA-C, Evan Argintar, MD; Washington, DC

Patient

A 72-year-old female presented to the hospital, requiring a revision following a total knee arthroplasty of the right knee. The patient's medical history included heart murmurs, tobacco use, and obesity.

Procedure

The patient underwent a total knee arthroplasty revision, resulting in a <15-cm incision on the right knee (Figure 1). The incision was closed using staples, and the patient received clindamycin for prophylactic antibiotic control.

Application of 3M™ Prevena Restor™ Arthro•Form™ Incision Management System

Immediately after incision closure, 3M™ Prevena Restor™ Therapy was initiated using a 3M™ Prevena Restor™ Arthro•Form™ Dressing, which covered the full length of the incision and the area above and below the knee (Figure 2). Negative pressure was applied at -125mmHg.

Discharge and Follow-up

The patient was discharged on postoperative day 5. Seven days after surgery, Prevena Restor™ Therapy was discontinued, and the incision remained closed (Figure 3). On postoperative day 14, the incision remained closed without any complications. The patient reported less pain and swelling and improved post-surgical range of motion in the right knee following Prevena Restor™ Therapy with Prevena Restor™ Arthro•Form™ Dressing use compared to the previous total knee arthroplasty procedure.

Patient data and photos courtesy of Yavonne L. Johnson, PA-C, Evan Argintar, MD; Washington, DC.



Figure 1. Closed surgical incision.

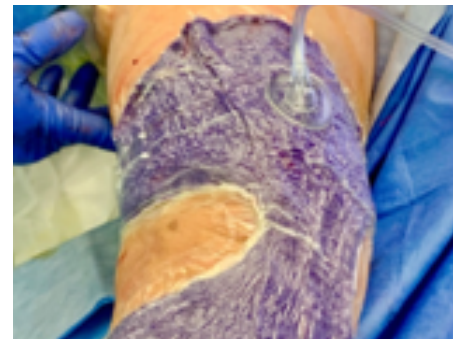


Figure 2. Application of 3M™ Prevena Restor™ Therapy System with 3M™ Prevena Restor™ Arthro•Form™ Dressing



Figure 3. Surgical incision 7 days after 3M™ Prevena Restor™ Therapy System with 3M™ Prevena Restor™ Arthro•Form™ Dressing.

KCI Medical Australia Pty Ltd
Building A, 1 Rivett Road
North Ryde, NSW 2113
Ph: 1300 524 822

InterMed Medical Limited
71 Apollo Drive
Albany Auckland 0632
Ph: 0800 524 222

Note: As with any case study, the results and outcomes should not be interpreted as a guarantee or warranty of similar results. Individual results may vary, depending on the patient's circumstances and condition.

Note: Specific indications, limitations, contraindications, warnings, precautions, and safety information exist for these products and therapies. Please consult a clinician and product Instructions For Use prior to application. This material is intended for healthcare professionals only.

© 2023 3M. All rights reserved. 3M and the other marks shown are marks and/or registered marks. Unauthorized use prohibited.