

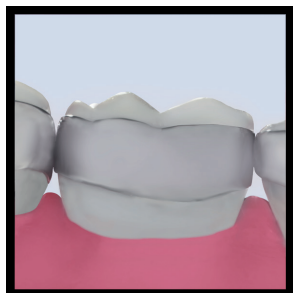
3M™ Victory Series™ First Molar Bands.....	5.2
3M™ Victory Series™ Second Molar Bands.....	5.6
3M™ Unitek™ General Purpose Molar Bands.....	5.10
3M™ Unitek™ Pedodontic Molar Bands.....	5.11
3M™ Unitek™ Proportioned Bicuspid Bands.....	5.12
3M™ Unitek™ General Purpose Bicuspid Bands.....	5.14
3M™ Unitek™ Contoured Bicuspid Bands.....	5.16
Lingual Sheaths.....	5.17
Lingual Attachments.....	5.18
Modular Band/Bond Kit Organizers.....	5.19
RxWeld Service.....	5.20
Torqued Attachments.....	5.21
Light Wire Attachments.....	5.22
Standard Edgewise Welding Reference.....	5.22
Weld Positioning.....	5.23
3M™ MBT™ Versatile+ Appliance System	
First Molars.....	5.23
3M™ MBT™ Versatile+ Appliance System	
Second Molars.....	5.24
Standard First Molars.....	5.25
Standard Second Molars.....	5.26
Comparison of Prescriptions	
Weld Positioning for Upper First Molar.....	5.27
Weld Positioning for Lower First Molar.....	5.28
Weld Positioning for Upper Second Molar.....	5.29
Weld Positioning for Lower Second Molar.....	5.30
Lingual Molar Attachments.....	5.31

Victory Series™ Narrow Contoured First Molar Bands



Maxillary – Victory Series Narrow Contoured Molar Bands

- Permanent laser ID marking
- Straight interproximal walls for reduced separation
- Reduced gingival/occlusal dimensions for less occlusal and gingival interferences
- Micro-etched inner surface for increased retention
- Curved festooned occlusal interproximal
- Increased occlusal “edge” strength for reduced deformation



Mandibular – Victory Series
Narrow Contoured Molar Bands



Victory Series™ Narrow Contoured First Molar Bands

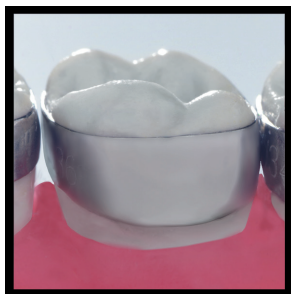
		Kit	Trial	Introduction	Professional	Master
Micro-etched						
Narrow	Upper		901-408	901-401	901-404	901-406
Narrow	Lower		901-308	901-301	901-304	901-306
Average Cases Per Kit			3 to 5	10 to 15	40 to 50	90 to 100

		maxillary or mandibular				
		Kit	Trial	Introduction	Professional	Master
Regular Size						
31			-	2	3	6
31+			-	2	3	6
32			-	2	4	8
32+			-	2	5	10
33			2	3	6	12
33+			2	3	7	14
34			2	4	8	16
34+			3	4	9	19
35			3	5	10	21
35+			4	5	11	23
36			4	5	11	23
36+			4	5	11	23
37			3	5	10	21
37+			3	5	10	20
38			2	4	9	18
38+			2	4	7	14
39			2	3	6	12
39+			1	2	5	10
40			1	2	3	6
40+			-	1	3	6
41			-	1	3	6
41+			-	1	1	1
42			-	1	1	1
42+			-	1	1	1
43			-	1	1	1
43+			-	1	1	1
44			-	1	1	1
Quadrant Total			38	75	150	300
Kit Total			76	150	300	600

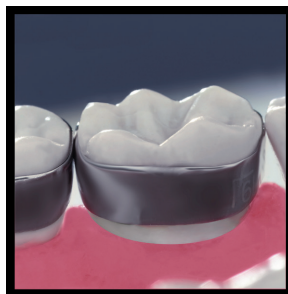
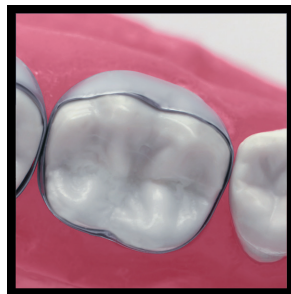
Victory Series™ Standard Contoured First Molar Bands



Maxillary – Victory Series
Standard Contoured Molar Bands



- Individual bands available in regular and hard temper. Kits available in regular temper only.
- Permanent laser ID marking
- Micro-etched inner surface for increased retention
- Completely proportioned sizing
- Straight interproximal walls for reduced separation
- Increased occlusal “edge” strength for reduced deformation



Mandibular – Victory Series Standard Contoured Molar Bands

Victory Series™ Standard Contoured First Molar Bands

		Kit	Trial	Introduction	Professional	Master
Micro-etched						
Standard - Regular	Upper		951-408	951-401	951-404	951-406
Standard - Regular	Lower		951-308	951-301	951-304	951-306
Average Cases Per Kit			3 to 5	10 to 15	40 to 50	90 to 100

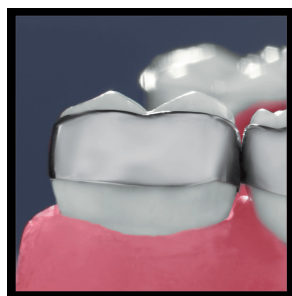
		maxillary or mandibular				
		Kit	Trial	Introduction	Professional	Master
Hard Size	Regular Size					
131	31		-	2	3	6
131+	31+		-	2	3	6
132	32		-	2	4	8
132+	32+		-	2	5	10
133	33		2	3	6	12
133+	33+		2	3	7	14
134	34		2	4	8	16
134+	34+		3	4	9	19
135	35		3	5	10	21
135+	35+		4	5	11	23
136	36		4	5	11	23
136+	36+		4	5	11	23
137	37		3	5	10	21
137+	37+		3	5	10	20
138	38		2	4	9	18
138+	38+		2	4	7	14
139	39		2	3	6	12
139+	39+		1	2	5	10
140	40		1	2	3	6
140+	40+		-	1	3	6
141	41		-	1	3	6
141+	41+		-	1	1	1
142	42		-	1	1	1
142+	42+		-	1	1	1
143	43		-	1	1	1
143+	43+		-	1	1	1
144	44		-	1	1	1
Quadrant Total			38	75	150	300
Kit Total			76	150	300	600

Victory Series™ Narrow Contoured Second Molar Bands



Maxillary – Victory Series Narrow Contoured Second Molar Bands

- Permanent laser ID marking
- Straight interproximal walls for reduced separation
- Reduced gingival/occlusal dimensions for less occlusal and gingival interferences
- Micro-etched inner surface for increased retention
- Curved festooned occlusal interproximal
- Increased occlusal “edge” strength for reduced deformation



Mandibular – Victory Series
Narrow Contoured Second Molar Bands

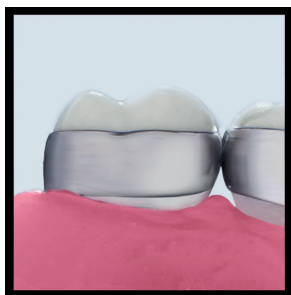


Victory Series™ Narrow Contoured Second Molar Bands

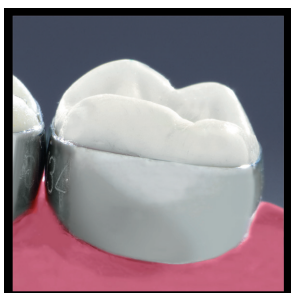
		Kit	Trial	Introduction	Professional
Micro-etched					
Narrow	Upper		906-208	906-201	906-204
Narrow	Lower		906-108	906-101	906-104
Average Cases Per Kit			3 to 5	10 to 15	40 to 50

		maxillary or mandibular			
		Kit	Trial	Introduction	Professional
Regular Size					
28			-	2	4
28+			-	2	4
29			-	2	4
29+			-	2	4
30			-	2	4
30+			-	2	4
31			-	2	5
31+			-	3	5
32			2	3	6
32+			2	3	6
33			2	3	7
33+			3	4	8
34			3	4	8
34+			4	4	9
35			4	4	9
35+			4	4	8
36			3	4	8
36+			3	4	7
37			2	3	7
37+			2	3	6
38			2	3	5
38+			1	2	5
39			1	2	4
39+			-	2	4
40			-	2	3
40+			-	2	3
41			-	2	3
Quadrant Total			38	75	150
Kit Total			76	150	300

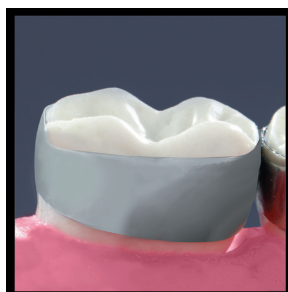
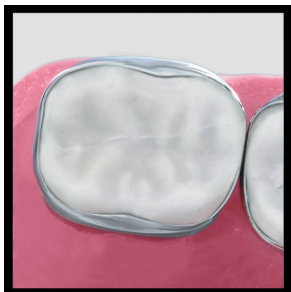
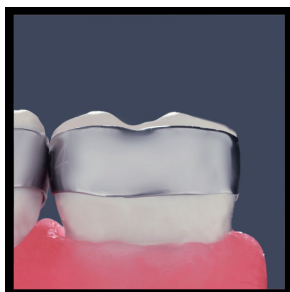
Victory Series™ Standard Contoured Second Molar Bands



Maxillary – Victory Series
Standard Contoured Second Molar Bands



- Individual bands available in regular and hard temper. Kits available in regular temper only.
- Permanent laser ID marking
- Micro-etched inner surface for increased retention
- Completely proportioned sizing
- Straight interproximal walls for reduced separation
- Increased occlusal “edge” strength for reduced deformation



Mandibular – Victory Series Standard Contoured Second Molar Bands

Victory Series™ Standard Contoured Second Molar Bands

		Kit	Trial	Introduction
Micro-etched				
Standard - Regular	Upper		956-208	956-201
Standard - Regular	Lower		956-108	956-101
Average Cases Per Kit			3 to 5	10 to 15

		maxillary or mandibular		
		Kit	Trial	Introduction
Hard Size	Regular Size			
128	28	-	-	2
128+	28+	-	-	2
129	29	-	-	2
129+	29+	-	-	2
130	30	-	-	2
130+	30+	-	-	2
131	31	-	-	3
131+	31+	-	-	3
132	32	2	-	3
132+	32+	2	-	3
133	33	2	-	3
133+	33+	3	-	4
134	34	3	-	4
134+	34+	4	-	4
135	35	4	-	4
135+	35+	4	-	4
136	36	3	-	4
136+	36+	3	-	4
137	37	2	-	3
137+	37+	2	-	3
138	38	2	-	3
138+	38+	1	-	2
139	39	1	-	2
139+	39+	-	-	2
140	40	-	-	2
140+	40+	-	-	2
141	41	-	-	2
Quadrant Total			38	75
Kit Total			76	150

Unitek™ General Purpose Molar Bands

- Universal anatomy fits rights and lefts with minor burnishing
- Permanent laser ID
- Individual wide bands available in hard temper. Kits available in regular temper only.
- Available in narrow or wide



		Kit	Introduction
Non - etched			
Regular	U/L		
	Narrow		161-101
	Wide		164-201
Average Cases Per Kit			10 to 15

		maxillary or mandibular	
		Kit	Introduction
Hard Size	Regular Size		
128	28		2
128+	28+		2
129	29		2
129+	29+		2
130	30		2
130+	30+		2
131	31		2
131+	31+		4
132	32		4
132+	32+		6
133	33		6
133+	33+		8
134	34		8
134+	34+		10
135	35		12
135+	35+		12
136	36		12
136+	36+		12
137	37		10
137+	37+		8
138	38		6
138+	38+		4
139	39		2
139+	39+		2
140	40		2
140+	40+		2
141	41		2
141+	41+		2
142	42		2
Quadrant Total			150
Kit Total			300

Unitek™ Pedodontic Molar Bands

- Available prewelded with Victory Series™ Buccal Tubes
- Universal anatomy fits rights and lefts
- Regular temper
- Narrow occlusal-gingival height fits primary molars
- Same anatomy (but smaller size range) as Narrow General Purpose Molar Bands



Kit		Trial	Introduction	Spectrum
Regular	U/L	-	-	162-100
Regular	Upper	162-107	162-108	-
Regular	Lower	162-207	162-208	-

Regular Size	Kit		Trial		Introduction		Spectrum	
	Upper	Lower	Upper	Lower	Upper	Lower	Upper	Lower
25	-	6	-	10	-	2	-	2
26	-	6	-	10	-	2	-	2
27	-	6	-	10	-	2	-	2
28	6	4	10	10	2	2	-	-
28+	6	4	10	10	-	-	-	-
29	4	4	10	10	2	2	-	-
29+	4	2	10	8	-	-	-	-
30	4	2	10	6	2	2	-	-
30+	4	2	10	4	-	-	-	-
31	4	2	8	4	2	2	-	-
31+	4	2	8	4	-	-	-	-
32	4	2	6	4	2	2	-	-
32+	4	2	6	4	-	-	-	-
33	2	2	4	2	2	2	-	-
33+	2	2	4	2	-	-	-	-
34	2	2	4	2	2	2	-	-
34+	-	-	-	-	4	4	-	-
35	-	-	-	-	4	4	-	-
35+	-	-	-	-	4	4	-	-
36	-	-	-	-	4	4	-	-
36+	-	-	-	-	4	4	-	-
37	-	-	-	-	4	4	-	-
37+	-	-	-	-	4	4	-	-
38	-	-	-	-	2	2	-	-
38+	-	-	-	-	-	-	-	-
39	-	-	-	-	2	2	-	-
39+	-	-	-	-	-	-	-	-
40	-	-	-	-	2	-	-	-
Kit Total	50	50	100	100	48	52		

Unitek™ Proportioned Bicuspoid Bands



- Broad buccal coverage for superior retention
- Anatomy snaps into place over height of contour when seated
- Slight occlusal and gingival edge enhances cement retention
- Permanent laser ID
- Shown with lingual seating lug (REF 55264) attached – available on special order

	Kit	Trial	Introduction	Master
Upper		147-401	147-402	147-404
Average Cases Per Kit		3 to 5	10 to 15	90 to 100

	maxillary			
	Kit	Trial	Introduction	Master
Size				
1		2	2	4
2		2	2	4
3		2	2	4
4		2	2	6
5		2	2	10
6		2	4	10
7		2	4	12
8		2	4	12
9		2	4	20
10		2	4	30
11		2	6	30
12		4	6	50
13		4	6	50
14		4	10	50
15		4	10	50
16		4	10	50
17		4	10	30
18		4	10	30
19		4	6	20
20		2	6	20
21		2	6	20
22		2	6	20
23		2	6	20
24		2	4	10
25		2	4	8
26		2	4	8
27		2	4	8
28		2	2	6
29		2	2	4
30		2	2	4
Kit Total		76	150	600

Unitek™ Proportioned Bicuspид Bands

- Fully proportioned in all dimensions and contour, from one band size to the next
- Universal anatomy fits rights and lefts
- Kits may be split left/right for angulated brackets
- Regular temper
- Permanent laser ID

	Kit	Trial	Introduction	Master
Lower		147-301	147-302	147-304
Average Cases Per Kit		3 to 5	10 to 15	90 to 100

	mandibular			
	Kit	Trial	Introduction	Master
Size				
1		2	2	2
2		2	2	2
3		2	2	2
4		2	2	2
5		2	2	2
6		2	2	2
7		2	2	6
8		2	2	6
9		2	2	6
10		2	2	8
11		2	2	8
12		2	4	20
13		2	4	22
14		2	6	34
15		2	6	34
16		2	8	48
17		2	8	48
18		2	10	48
19		2	10	48
20		2	10	48
21		2	8	48
22		2	8	30
23		2	6	30
24		2	6	30
25		2	4	12
26		2	4	12
27		2	4	12
28		2	2	4
29		2	2	4
30		2	2	4
31		2	2	4
32		2	2	2
33		2	2	2
34		2	2	2
35		2	2	2
36		2	2	2
37		2	2	2
38		2	2	2
Kit Total		76	150	600

Unitek™ General Purpose Bicuspid Bands

- Designed for practitioners who prefer a wedge fit
- Choice of wide or narrow bands in the occlusal-gingival dimension
- Universal anatomy fits rights and lefts
- Kits may be split left/right for angulated brackets
- Regular temper
- Permanent laser ID



Wide



Narrow

- Firm “wedge” fit for adaptability to widely varying bicuspid shapes
- Occlusal-gingival height of the narrow bands are .5 mm less than the wide bands
- Slight occlusal-gingival roll enhances cement retention

Note: Photos in this section may show laser ID or ink ID. Refer to product description for actual ID type.

Unitek™ General Purpose Bicuspid Bands

Kit		Introduction
Wide	Upper	143-402
	Lower	143-302
Narrow	Upper	143-113
	Lower	143-213
Average Cases Per Kit		10 to 15

maxillary wide and narrow

Kit	Introduction
Size	
00	2
00+	2
0	2
0+	2
1	2
1+	2
2	2
2+	2
3	2
3+	4
4	4
4+	6
5	8
5+	8
6	8
6+	10
7	10
7+	10
8	10
8+	10
9	8
9+	6
10	6
10+	4
11	4
11+	2
12	2
12+	2
13	2
13+	2
14	2
14+	2
15	2
Kit Total	150

mandibular wide and narrow

Kit	Introduction
Size	
0	2
0+	2
1	2
1+	2
2	2
2+	2
3	2
3+	2
4	2
4+	2
5	2
5+	4
6	4
6+	4
7	4
7+	6
8	6
8+	6
9	6
9+	6
10	8
10+	8
11	6
11+	6
12	6
12+	6
13	6
13+	4
14	4
14+	4
15	4
15+	2
16	2
16+	2
17	2
17+	2
18	2
18+	2
19	2
19+	2
20	2
Kit Total	150

Unitek™ Contoured Bicuspid Bands



- Anatomy similar to proportioned bicuspid bands without half sizes
- Universal anatomy fits rights and lefts
- Kits may be split left/right for angulated brackets
- Regular temper
- Permanent laser ID
- Shown with lingual seating lug (REF 55264) attached – available on special order













	Kit	Trial	Introduction	Professional
Upper		147-408	147-405	147-406
Lower		147-308	147-305	-
Average Cases Per Kit		3 to 5	10 to 15	40 to 50

	maxillary			
	Kit	Trial	Introduction	Professional
Size				
1		2	4	10
2		2	6	10
3		4	8	14
4		6	8	18
5		8	12	22
6		8	12	26
7		8	16	32
8		8	20	40
9		8	22	40
10		8	14	30
11		6	10	22
12		4	8	16
13		2	6	12
14		4	4	8
Kit Total		76	150	300

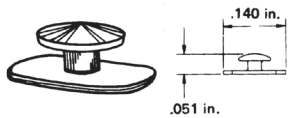
	mandibular			
	Kit	Trial	Introduction	Professional
Size				
1		2	2	6
2		2	4	6
3		2	4	8
4		2	4	10
5		2	4	10
6		2	6	14
7		4	8	16
8		4	8	18
9		6	10	20
10		6	12	20
11		6	10	22
12		6	10	20
13		6	10	18
14		6	10	18
15		4	10	20
16		4	10	18
17		2	6	14
18		2	6	12
19		2	4	10
20		2	4	8
21		2	4	6
22		2	4	6
Kit Total		76	150	300

Lingual Sheaths

Streamlined lingual sheaths feature a variety of horizontal styles and one vertical style with a two-point contact for ease of lingual archwire insertion and stability. All horizontal styles are available with or without mesial/distal hooks; with solid or slotted tube; with or without distal latching indent. All styles are narrow in the occlusal-lingual dimension and have mesial/distal welding flanges that are curved slightly for better adaptation to bands. Lingual sheaths not preassembled on bands are sold in minimum quantities of 10 each type.

Conventional		Hook	Latching Indent	Tube Type	For Wire Size (Distally Doubled)		Left/Right	Order No.
					Inches	(mm)		
Horizontal		yes	no	solid	.030	(.76)	-	080-111
					.036	(.91)	-	080-211
Horizontal		yes	no	slotted	.030	(.76)	-	080-131
					.036	(.91)	-	080-231
Horizontal		yes	yes	slotted	.036	(.91)	UL/LR	080-242
					.036	(.91)	UR/LL	080-243
Horizontal		yes	yes	solid	.036	(.91)	UL/LR	080-245
					.036	(.91)	UR/LL	080-246
Horizontal		no	no	solid	.030	(.76)	-	080-110
					.036	(.91)	-	080-210
Horizontal		no	yes	solid	.030	(.76)	-	080-120
					.036	(.91)	-	080-220
Horizontal		no	no	slotted	.030	(.76)	-	080-130
					.036	(.91)	-	080-230
Horizontal		no	yes	slotted	.030	(.76)	-	080-140
					.036	(.91)	-	080-240
w/distal ball hook		yes	yes	slotted	.036	(.91)	UL/LR	080-251
							UR/LL	080-252
w/mesial ball hook		yes	yes	slotted	.036	(.91)	UL/LR	080-253
							UR/LL	080-254
Vertical		no	no	solid	.036	(.91)	-	080-270
Level Anchorage™								
Horizontal		no	no	solid	.036	(.91)	-	080-100

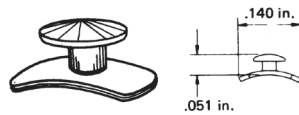
Lingual Attachments



Flat-Base Lingual Buttons

Mushroom head, highly polished to prevent tissue irritation, retain auxiliary attachment from any direction. Also useful as a seating and removing lug.

482-100 10/pk



Curved-Base Lingual Buttons

Same head as 482-100, but on a curved base that adapts more easily to bicuspid bands and molar bands.

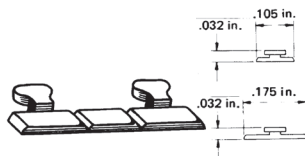
482-120 10/pk

Clear Plastic Button

For direct bonding
224-800 10/pk

Curved Bondable Buttons

20400-02 10/pk

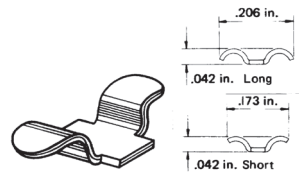


Combination Lingual Hook/Seating Lugs

Hold elastics securely from mesial, distal, or occlusal. Straight occlusal edge for band seating. Smooth edges to protect against tissue irritation. Strip scored for easy break-away. 100/pk

481-001 Short (for anteriors and bicuspids)

481-002 Long (for molars)

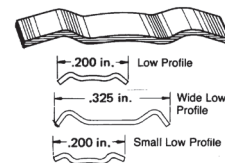


Raised Arm Lingual Cleats

Arms are curved to protect against tissue irritation. Accommodates up to three heavy elastics on one cleat. 100/pk

485-001 Long arms

485-002 Short arms



Low-Profile Lingual Cleats (Debnam)

100/pk

485-004 Low profile

485-005 Wide low profile

485-006 Small low profile

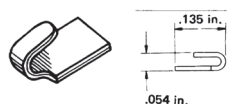


Lingual Ball Hooks

Shanks flattened at end to facilitate a secure attachment to bands and lingual bonding pads.

486-010 Straight, 10/pk

486-020 Offset, 10/pk



Molar Hooks

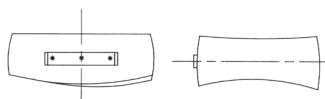
Easy to weld on bands and strong enough for heavy cross elastics. No sharp edges to irritate tissue or damage elastics.

480-001 10/pk



Bondable Lingual Cleat

709-050 10/pk



Seating Lugs

55264

Please specify if other than standard lingual position.

Modular Band/Bond Kit Organizers

- Modular “snap together” kit organizers can be custom assembled to your specific needs
- Durable plastic containers enclose sliding kit drawers with clear plastic hinged covers to protect your inventory
- Color coded labels identify band types

Bicuspid Organizers

- 185-121** Upper Bicuspid Proportional
- 185-122** Lower Bicuspid Proportional
- 185-116** Upper Bicuspid (Wide)
- 185-117** Upper Bicuspid (Narrow)
- 185-118** Lower Bicuspid (Wide)
- 185-119** Lower Bicuspid (Narrow)
- 185-120** Upper and Lower Contoured

Modular Bond Kit Organizers

- 186-110** Small Bracket Organizer
- 186-410** Large Bracket Organizer

1st Molar Organizers

- 185-126** Lower 1st Molar
(Regular, Rights and Lefts)
- 185-127** Lower 1st Molar (Hard, Rights and Lefts)
- 185-128** Lower Right 1st Molar (Regular)
- 185-129** Lower Left 1st Molar (Regular)
- 185-130** Lower Right 1st Molar (Hard)
- 185-131** Lower Left 1st Molar (Hard)
- 185-132** Upper 1st Molar
(Regular, Rights and Lefts)
- 185-133** Upper 1st Molar (Hard, Rights and Lefts)
- 185-134** Upper Right 1st Molar (Regular)
- 185-135** Upper Left 1st Molar (Regular)
- 185-136** Upper Right 1st Molar (Hard)
- 185-137** Upper Left 1st Molar (Hard)
- 185-166** Lower Right Narrow 1st Molar
- 185-167** Lower Left Narrow 1st Molar
- 185-168** Upper Right Narrow 1st Molar
- 185-169** Upper Left Narrow 1st Molar

2nd Molar Organizers

- 185-147** Upper Right 2nd Molar (Regular)
- 185-152** Upper Left 2nd Molar (Regular)
- 185-149** Lower Right 2nd Molar (Regular)
- 185-146** Lower Right 2nd Molar (Hard)
- 185-150** Lower Left 2nd Molar (Regular)
- 185-151** Lower Left 2nd Molar (Hard)
- 185-170** Lower Right Narrow 2nd Molar
- 185-171** Lower Left Narrow 2nd Molar
- 185-172** Upper Right Narrow 2nd Molar
- 185-173** Upper Left Narrow 2nd Molar

General Purpose Molar Organizers

- 185-141** Upper Molar (Narrow, Regular)
- 185-145** Upper Molar (Wide, Hard)
- 185-140** Lower Molar (Narrow, Regular)
- 185-144** Lower Molar (Wide, Hard)
- 185-154** Upper and Lower Pedodontic Molar

Accessories

- 185-155** Miscellaneous Empty Box

RxWeld Service

Custom Services

Convenient prescription program for orthodontists who reorder 3M seamless bands prewelded with 3M attachments:

- Reduces reorder time and paperwork
- Eliminates order confusion and reduces potential prewelding errors

Reordering bands prewelded with correct attachments and precise angulation and positioning is a time-consuming task in any orthodontic practice.

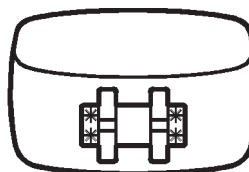
3M offers a unique ordering service which greatly simplifies band reordering. Here's how it works:

Every orthodontist ordering prewelded bands from 3M has a prescription on file, containing customized ordering instructions.

Reorders with instructions that deviate from the prescription file will be verified by phone before 3M processes the order. Custom order forms and a copy of your prescription are available on request.

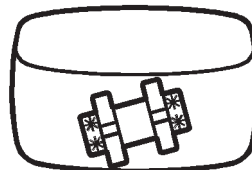
Standard Welding

3M attachments in standard positions (see standard positions chart for edgewise and light wire attachments) on 3M seamless bands and bonding bases. No charge.

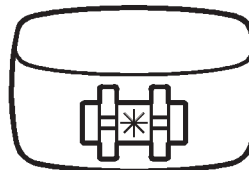


Custom Welding

3M attachments in non-standard positions (see angulation chart for details on custom angulation) on 3M seamless bands and bonding bases. No charge.



Tack-welding only — 3M attachments to 3M seamless bands. No charge.

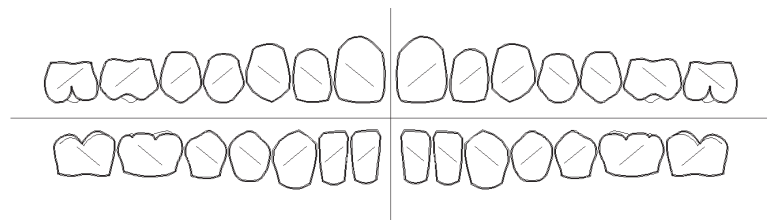


Torqued Attachments

Standard Angulation Chart

Angulation direction is illustrated by chart. Chart is shown as if viewer is facing patient. Degree of angulation must be specified when ordering. Our special order form includes this chart to assist in ordering desired angulation.

Note: For some pre-adjusted appliances, the crown tip is different than standard edgewise appliances. Consult pre-adjusted appliances section of this catalog for prescribed crown tip and angulation degrees applicable to specific techniques.



Patient's Right

Patient's Left

(+) Angulation
Crowns tipped mesially; roots inclined distally.

(-) Angulation
Crowns tipped distally; roots inclined mesially.

Applicable to Standard Edgewise and Torqued Edgewise

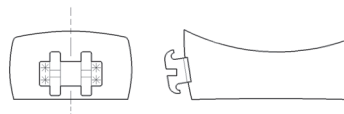
(-) Torque Crowns - Lingual
(+) Torque Crowns - Labial

Brackets to G.P. Bicuspid

Mesial/Distal Positioning
Centered

Occlusal/Gingival Positioning
Mesial-horizontal center of the base of archwire slot is located on horizontal centerline of band.

Brackets to Proportioned Bicuspid



Mesial/Distal Positioning
Centered

Occlusal/Gingival Positioning
Slightly offset occlusally whereby occlusal edge of the tie-wing is located approximately .0075 in. (.2 mm) from the occlusal edge of the band.

Light Wire Attachments

Standard Edgewise Welding Reference

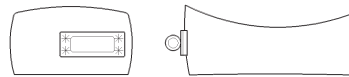
Light Wire Attachments

Brackets to Bicuspid

Mesial/Distal
Centered

Occlusal/Gingival
Underslot of bracket centered
on band.

Single Buccal Tube to Molars



Mesial/Distal
Mesial edge of buccal tube bisects
mesial cusp.

Occlusal/Gingival
Gingival edge of tube is .048 in.
(1.2 mm) from gingival edge of band.

Standard Edgewise Welding Reference

Brackets to Bicuspid

Mesial/Distal Positioning
Centered

Occlusal/Gingival Positioning
Centered

* For proportioned bicuspid
bands, bracket is slightly offset
occlusally whereby occlusal
edge of tie-wings are flush with
occlusal edge of band.

Single Buccal Tube to Molars



Mesial/Distal Positioning
Mesial edge of buccal tube bisects
mesial cusp.

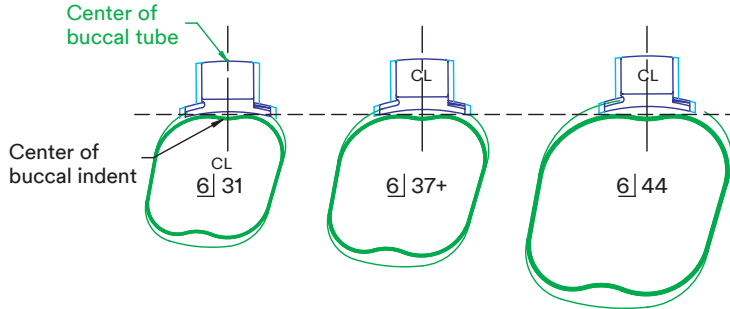
Occlusal/Gingival Positioning
Center of slot is .075 in. (1.9 mm)
from occlusal edge of band.

Weld Positioning

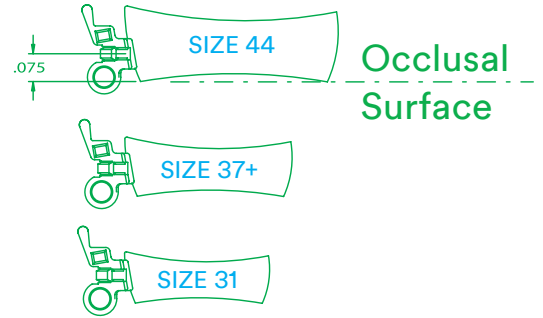
MBT™ Versatile+ Appliance System First Molars

Upper First Molar

Mesial / Distal Positioning:
Centerline of buccal tube positioned on buccal indent of band.

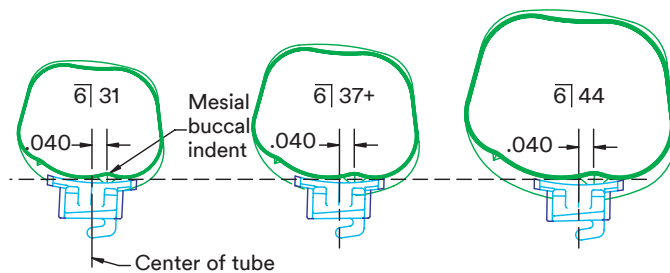


Occlusal / Gingival Positioning:
Center of edgewise slot is .075 in. (1.9 mm) from occlusal edge of band. (The occlusal slot is used when there are two slots.)

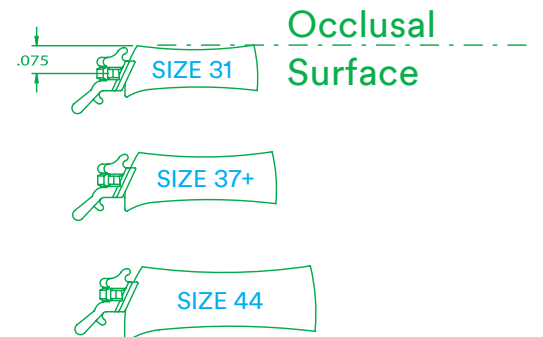


Lower First Molar

Mesial / Distal Positioning:
Centerline of the buccal tube is positioned .040 in. (1.0 mm) distal, from the mesial buccal indent.



Occlusal / Gingival Positioning:
Center of edgewise slot is .075 in. (1.9 mm) from occlusal edge of band. (The occlusal slot is used when there are two slots.)



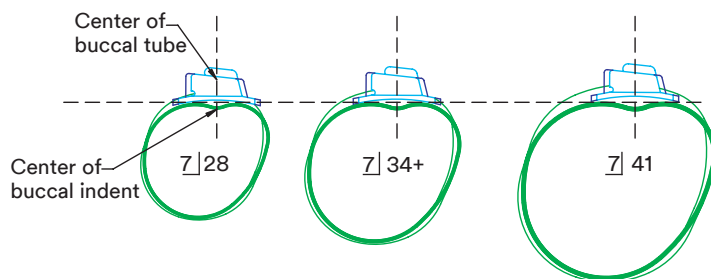
Weld Positioning

MBT™ Versatile+ Appliance System Second Molars

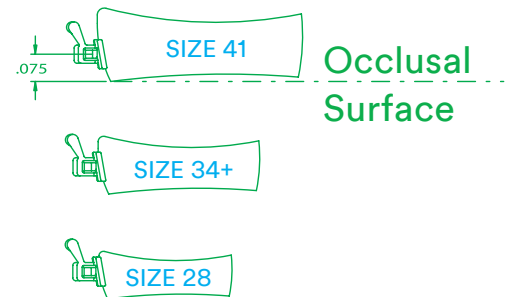
Upper Second Molar

Mesial / Distal Positioning:

Centerline of buccal tube positioned on the buccal indent of band.

**Occlusal / Gingival Positioning:**

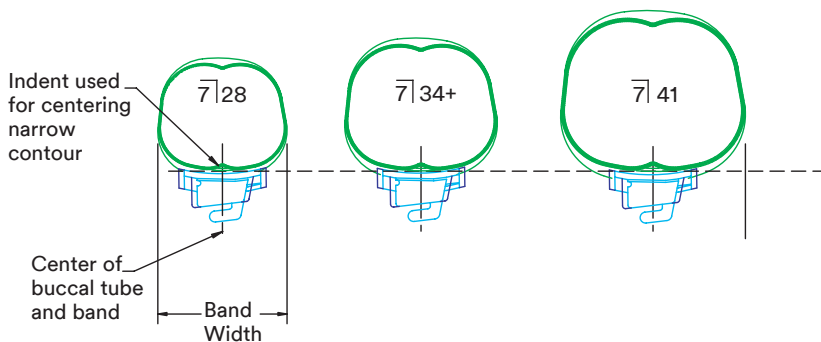
Center of edgewise slot is .075 in. (1.9 mm) from occlusal edge of band. (The occlusal slot is used when there are two slots.)



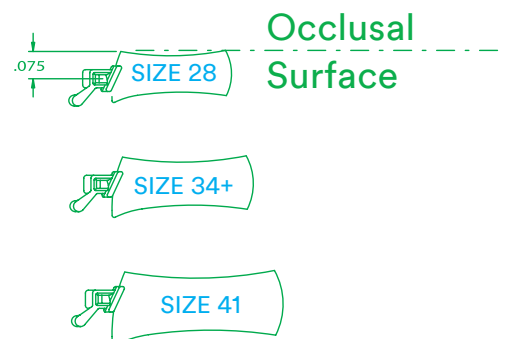
Lower Second Molar

Mesial / Distal Positioning:

Centerline of buccal tube is positioned at buccal indent (for narrow contour), or at the center of the band (for standard contour or general purpose).

**Occlusal / Gingival Positioning:**

Center of edgewise slot is .075 in. (1.9 mm) from occlusal edge of band. (The occlusal slot is used when there are two slots.)

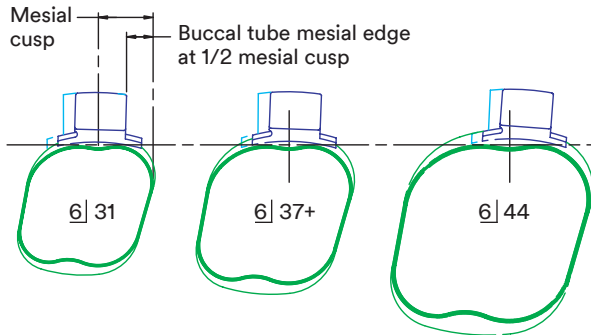


Weld Positioning Standard First Molars

Upper First Molar

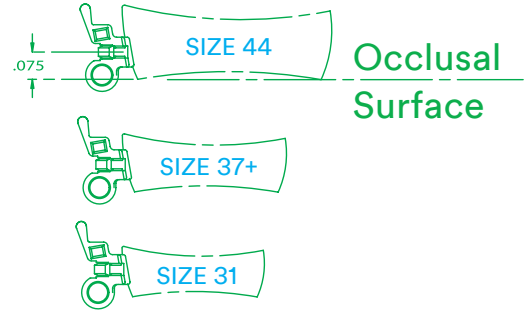
Mesial / Distal Positioning:

Mesial edge of buccal tube bisects mesial cusp.



Occlusal / Gingival Positioning:

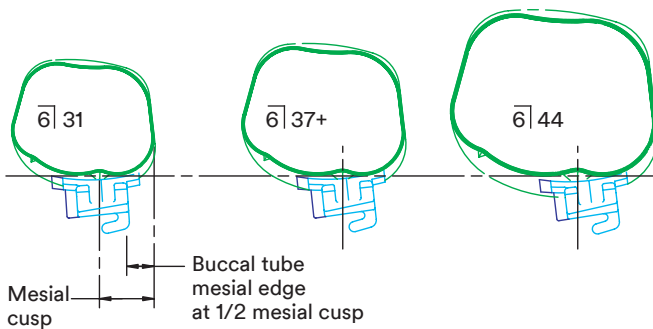
Center of edgewise slot is .075 in. (1.9 mm) from occlusal edge of band. (The occlusal slot is used when there are two slots.)



Lower First Molar

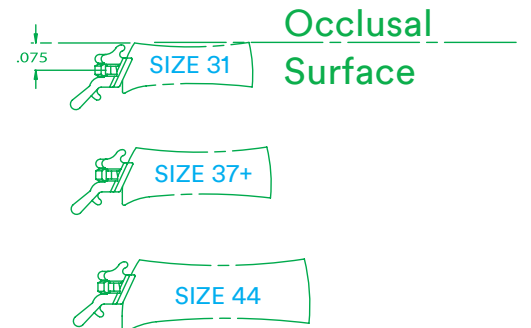
Mesial / Distal Positioning:

Mesial edge of buccal tube bisects mesial cusp.



Occlusal / Gingival Positioning:

Center of edgewise slot is .075 in. (1.9 mm) from occlusal edge of band. (The occlusal slot is used when there are two slots.)



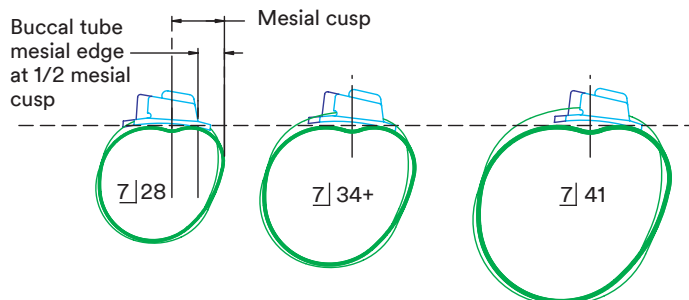
Weld Positioning

Standard Second Molars

Upper Second Molar

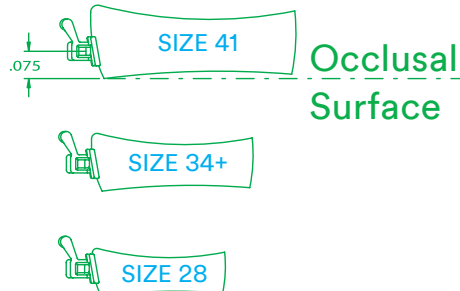
Mesial / Distal Positioning:

Mesial edge of buccal tube bisects mesial cusp.



Occlusal / Gingival Positioning:

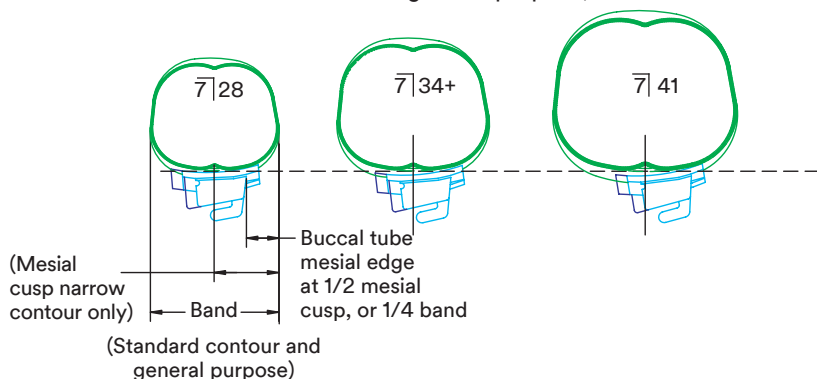
Center of edgewise slot is .075 in. (1.9 mm) from occlusal edge of band. (The occlusal slot is used when there are two slots.)



Lower Second Molar

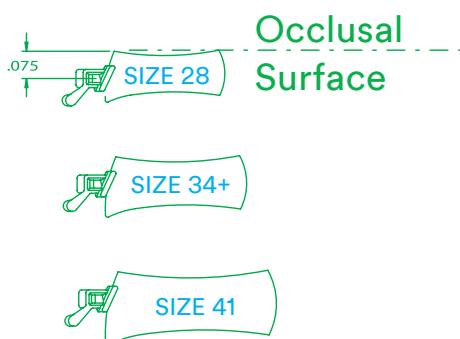
Mesial / Distal Positioning:

Mesial edge of buccal tube bisects mesial cusp (for narrow contour), mesial edge of buccal tube is 1/4 of the band width (for standard contour or general purpose).



Occlusal / Gingival Positioning:

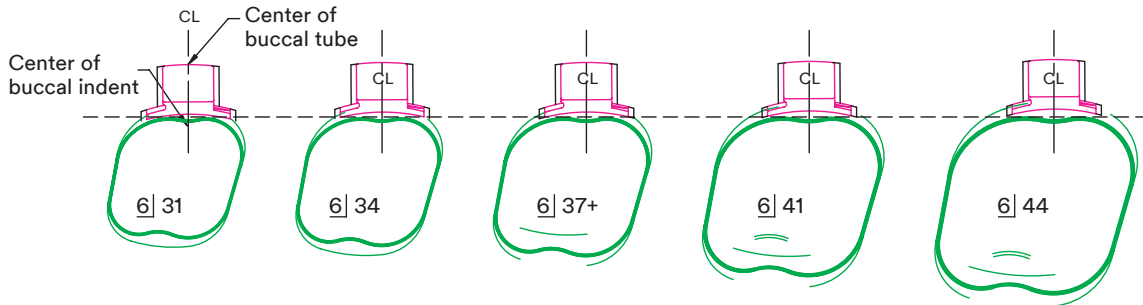
Center of edgewise slot is .075 in. (1.9 mm) from occlusal edge of band. (The occlusal slot is used when there are two slots.)



Comparison of Prescriptions Weld Positioning for Upper First Molar

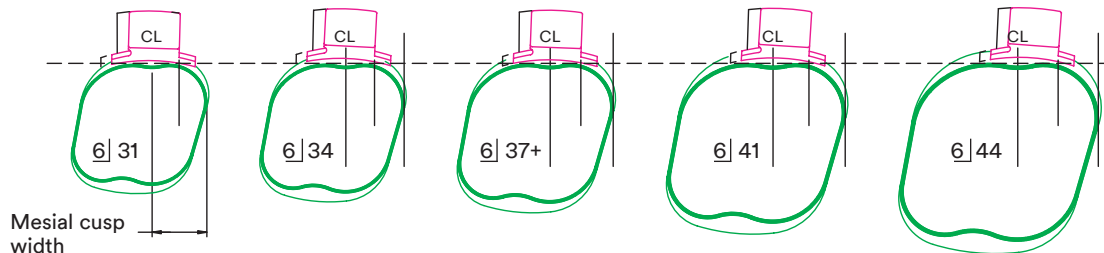
MBT™ Versatile+ Appliance System & Centered M-D Definition:

Center of buccal tube positioned at center of band.



As the band size increases, the distance from the mesial side of the band to the mesial side of the buccal tube increases. The center of the buccal tube stays centered on the band (regardless of the tube size).

Standard & Level Anchorage Definition: Mesial edge of buccal tube placed at the center of the mesial cusp.

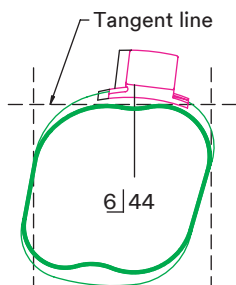


As the band size increases, the mesial cusp distance increases. The distance from the mesial side of the band to the mesial side of the buccal tube will increase (longer buccal tubes will extend further distal).

Aligning & Measuring

Band Measurement and Alignment

To measure the placement of the buccal tube on the band, the band must first be aligned using two features. A tangent line between the mesial cusp and distal cusp is used.



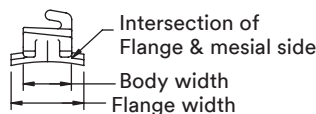
Buccal Tube Measurement

MBT™ Versatile+ Appliance System, Level Anchorage or Centered

The center of the tube is defined as 1/2 of the flange or body width.

Standard or Level Anchorage

The mesial side of the buccal tube is taken at the intersection of the mesial side and the flange.

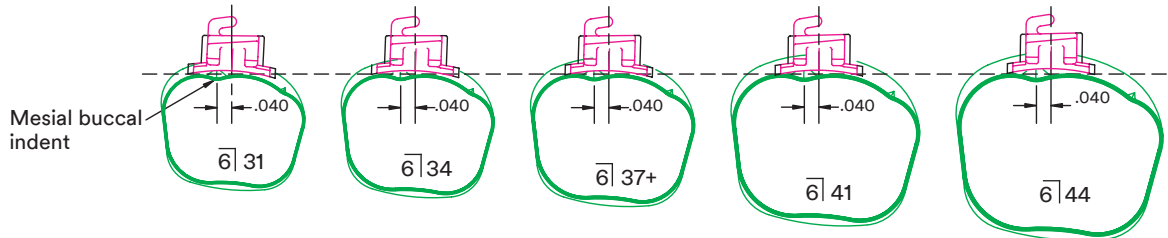


Comparison of Prescriptions

Weld Positioning for Lower First Molar

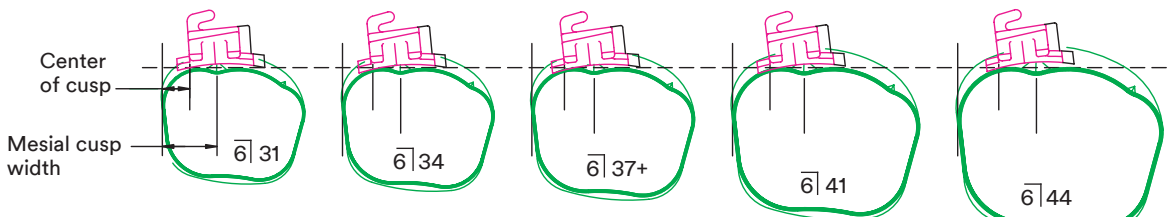
MBT™ Versatile+ Appliance System Definition:

Center of the buccal tube is positioned .040" (1.0 mm) distal, from the mesial buccal indent.



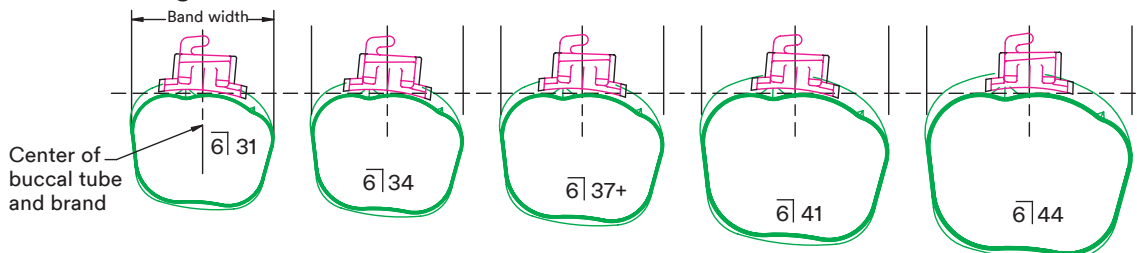
As the band size increases, the distance from the mesial side of the band to the mesial buccal indent increases. The buccal tube stays .040 (1.0 mm) distal from the mesial buccal indent (regardless of the tube size).

Standard Definition: Mesial edge of buccal tube is placed at the center of the mesial cusp.



As the band size increases, the mesial cusp distance increases. The distance from the mesial side of the band to the mesial side of the buccal tube will increase (longer buccal tubes will extend further distal).

Level Anchorage and Centered M-D Definition: Center of buccal tube is at center of band.

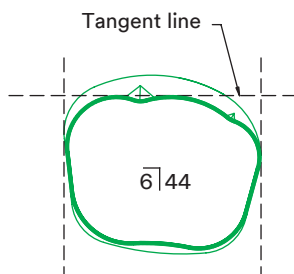


As the band size increases, the distance from the mesial side of the band to the mesial side of the buccal tube increases. The center of the buccal tube stays centered on the band (regardless of tube size).

Aligning & Measuring

Band Measurement and Alignment

To measure the placement of the buccal tube on the band, the band must first be aligned using two features. A tangent line between the mesial cusp and distal cusp is used.



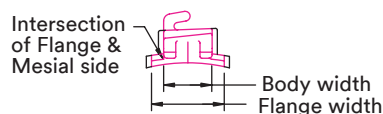
Buccal Tube Measurement

MBT™ Versatile+ Appliance System, Level Anchorage or Centered

The center of the tube is defined as 1/2 of the flange or body width.

Standard

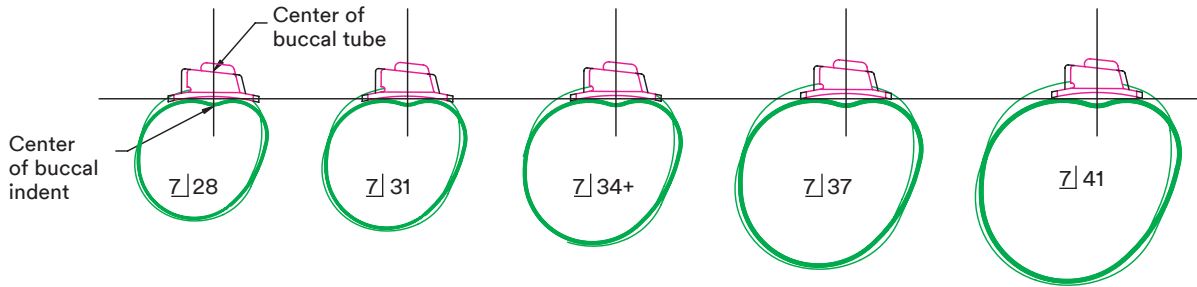
The mesial side of the buccal tube is taken at the intersection of the mesial side and the flange.



Comparison of Prescriptions Weld Positioning for Upper Second Molar

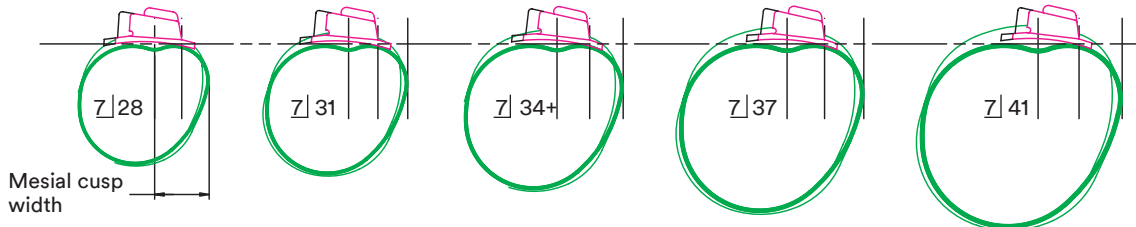
MBT™ Versatile+ Appliance System, Centered M-D & Level Anchorage Definition:

Center of buccal tube positioned on buccal indent.



As the band size increases, the distance from the mesial side of the band to the mesial side of the buccal tube increases. The center of the buccal tube stays centered on the band (regardless of tube size).

Standard Definition: Mesial edge of buccal tube placed at the center of mesial cusp.

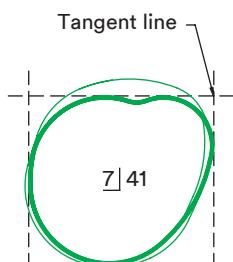


As the band size increases, the mesial cusp distance increases. The distance from the mesial side of the band to the mesial side of the buccal tube will increase (longer buccal tubes will extend further distal).

Aligning & Measuring

Band Measurement and Alignment

To measure the placement of the buccal tube on the band, the band must first be aligned using two features. A tangent line between the mesial cusp and distal cusp is used.



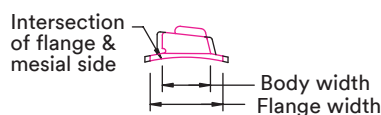
Buccal Tube Measurement

MBT™ Versatile+ Appliance System, Level Anchorage or Centered

The center of the tube is defined as 1/2 of the flange or body width.

Standard

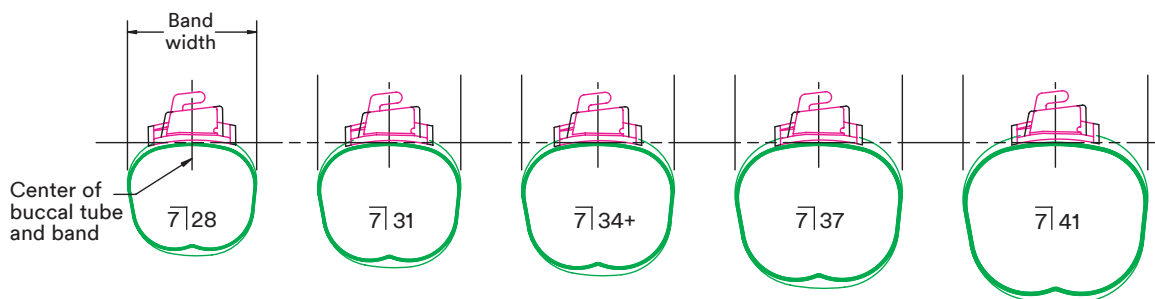
The mesial side of the buccal tube is taken at the intersection of the mesial side and the flange.



Comparison of Prescriptions Weld Positioning for Lower Second Molar

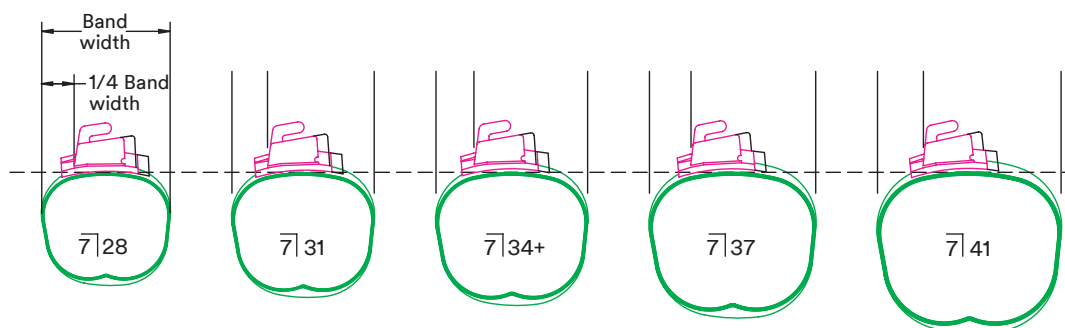
MBT™ Versatile+ Appliance System or Centered M-D Definition:

Center of buccal tube positioned at center of band.



As the band size increases, the distance from the mesial side of the band to the mesial side of the buccal tube increases. The center of the buccal tube stays centered on the band (regardless of tube size).

Standard Definition: Mesial edge of buccal tube is positioned at 1/4 of the band width.

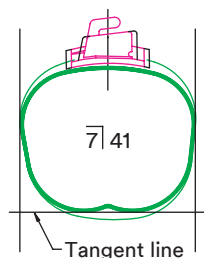


As the band size increases, the mesial cusp distance increases. The distance from the mesial side of the band to the mesial side of the buccal tube will increase (longer buccal tubes will extend further distal).

Aligning & Measuring

Band Measurement and Alignment

To measure the placement of the buccal tube on the band, the band must first be aligned using two features. A tangent line between the mesial cusp and distal cusp is used.



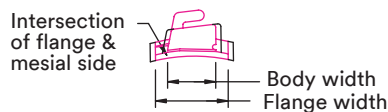
Buccal Tube Measurement

MBT™ Versatile+ Appliance System, Level Anchorage or Centered

The center of the tube is defined as 1/2 of the flange or body width.

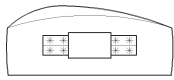
Standard

The mesial side of the buccal tube is taken at the intersection of the mesial side and the flange.



Lingual Molar Attachments

Sheaths

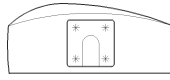


Mesial/Distal Centered



Occlusal/Gingival Centered

Molar Hooks

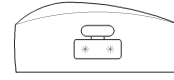


Mesial/Distal Centered



Occlusal/Gingival Centered with hook to occlusal (hook opening toward gingival).

Combination Hook/Lug

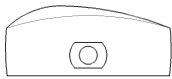


Mesial/Distal Centered



Occlusal/Gingival Center of hook is centered occlusal-lingually.

Buttons

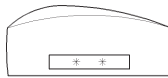


Mesial/Distal Positioning
On all molars with buccal attachment: button bisects mesial cusp. On G.P. molars, without buccal attachment: button is centered mesio-distally. Also applies to upper 2nd molars with or without buccal attachment.



Occlusal/Gingival Positioning
Welding flange is .020 in. (.51 mm) from occlusal edge of band.

Hi-Profile Cleats



Mesial/Distal Positioning
On all molars with buccal attachments: cleat bisects mesial cusp. On G.P. molars, without buccal attachment: button is centered mesio-distally. Also applies to upper 2nd molars with or without buccal attachment.



Occlusal/Gingival Positioning
Welding flange is .020 in. (.51 mm) from occlusal edge of band.

Low-Profile Cleats

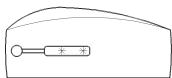


Mesial/Distal Positioning Centered



Occlusal/Gingival Positioning Centered

Ball Hook



Mesial/Distal
Mesial edge of flange centered mesio-distally; ball toward distal.



Occlusal/Gingival Centered

Level Anchorage™ System Attachments

Specifications vary somewhat from standard positioning. Please refer questions regarding Level Anchorage System specifications to your 3M Customer Service.

