

3M
Filtek™
Matrix

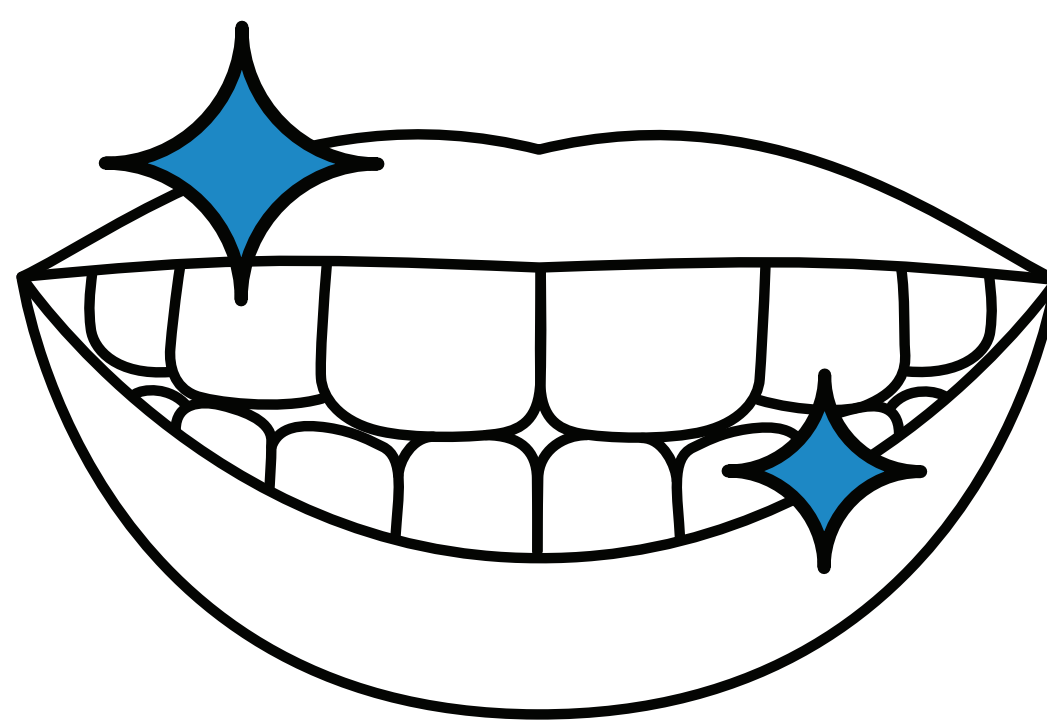
Improve your smile – faster and for less.

The **3M™ Filtek™ Matrix** is a custom-made device designed to simplify esthetic composite treatment, so you can get the smile of your dreams – **in as little as two appointments!**



First appointment:

Your dentist takes a digital impression of your smile.



Second appointment:

Your dentist uses the custom-made Filtek Matrix and you leave with a new smile.

► **Ask your dentist to learn more!**