

December 2022


User Advisory Notice

Immediate Action Required

Product: 3M™ Gas & Vapour Filter 6059, ABEK1

This notice includes a Stop Use instruction. Please review carefully.

As part of 3M Personal Safety Division's ongoing commitment to delivering high quality safety equipment, we are notifying our end users of the following information related to 3M™ Gas & Vapour Filter 6059, ABEK1. The 6059 filters are used with the 3M™ Reusable Half masks 6000 Series, 3M™ Reusable Half masks 6500 Series, 3M™ Reusable Half masks 7500 Series and 3M™ Full Face Respirator 6000 Series.

Product Description	Contents	3M ID	Affected Lots
3M™ Gas & Vapour Filter 6059, ABEK1		7000034747	C22280 C22281 If not marked with a Quality Check label

In recent internal testing, we discovered that a small number of these filters may have damage to the filter casing resulting in potential reduced gas and vapour and/or particulate performance when tested to the performance requirements of EN 14387:2004 + A1:2008 (see Appendix 2).

Only the lots stated above are affected by this notification.

Actions

1. Please check if you possess any of the 3M™ 6059 Series Gas and Vapour filters from batches C22280 or C22281 that aren't marked with a Quality Check label. See [Appendix 1](#) for instructions on how to identify the batches.
2. If you have any of the in-scope filters, please stop use immediately and remove them from service and your inventory. Contact your distributor for a free-of-charge replacement.

3M strives to provide the highest quality of products in the marketplace and apologizes for any inconvenience caused. If you have any questions regarding this notice, please contact your local 3M representative.

Appendix 1 to User Advisory Notice

The information below is designed to help you in reading the lot number for your filters as instructed by the User Advisory Notice. The affected filters have a Lot number of C22280 or C22281. However, there may be an additional digit at the end of the lot number on the packaging.

If the lot number on the packaging is in the following list, then the product is in scope for this User Advisory Notice unless marked with a Quality Check label:

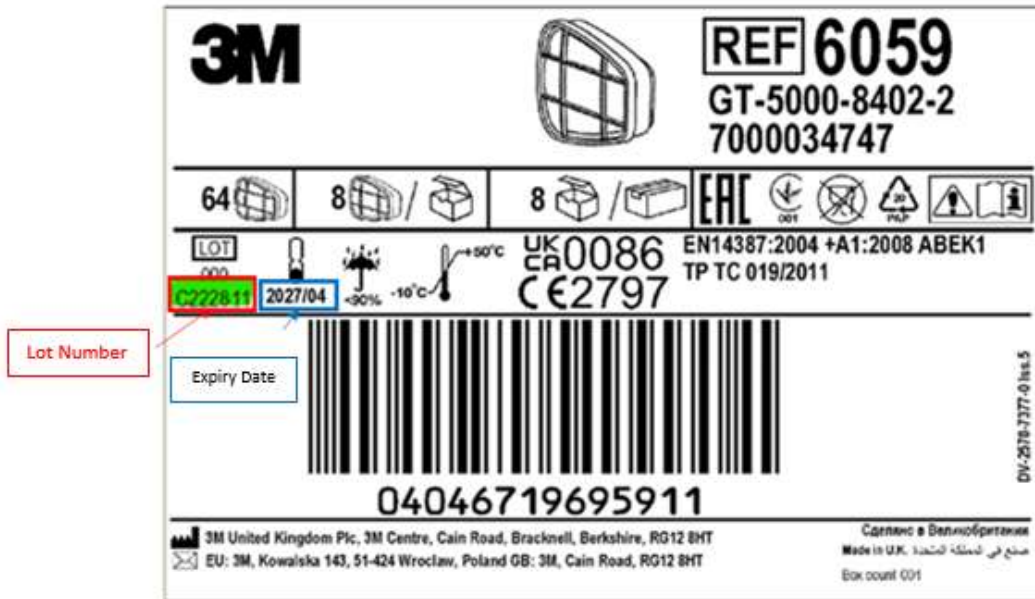
- C22280
- C222801
- C222802
- C222803
- C22281
- C222811
- C222812
- C222813

The quality check label is as follows:



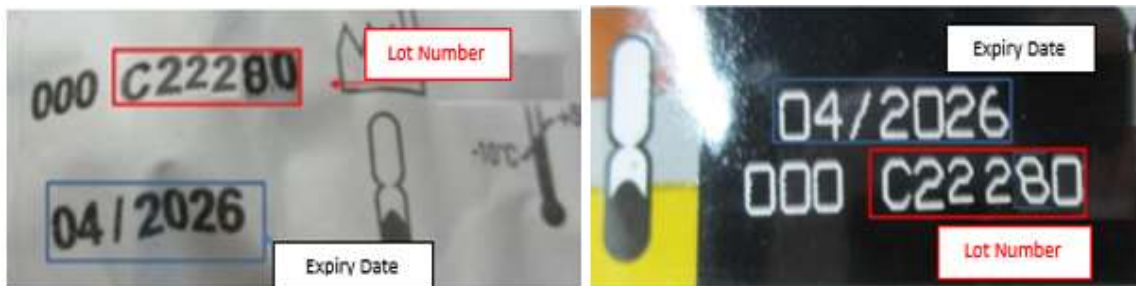
- Lot number on filter shipper case label
- Lot number on filter inner package
- Lot number on filter

Lot number on filter shipper case label



Lot number on filter inner package

Lot number on filter



Appendix 2 to Product Advisory Notice

The affected filters described in the Product Advisory Notice have damage to the filter casing where it meets the filter lid.

The pre-use checks in the User Instructions are expected to identify the damage in most cases.

