



Filtek™
Matrix



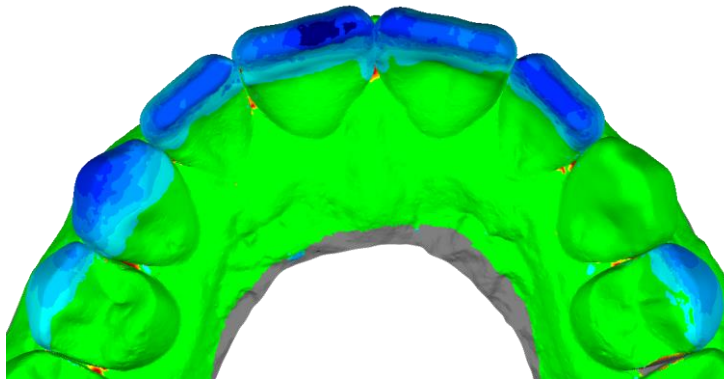
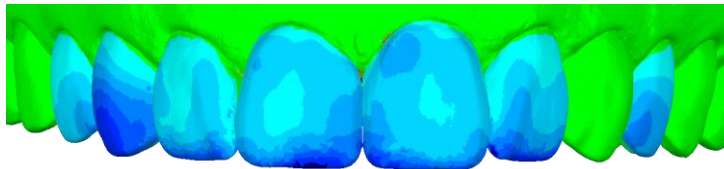
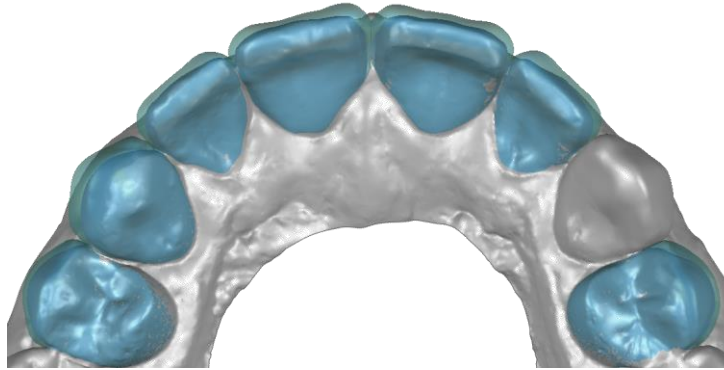
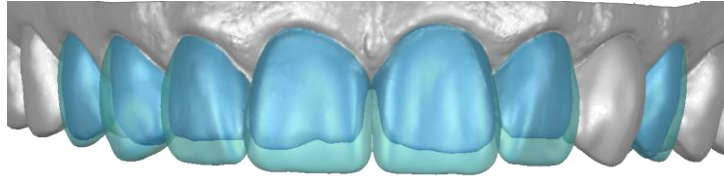
Case 2: 7-Unit Veneer with Diastema

Instructions:

Step 1: Use Veneer Matrix for completing restorations #6-10

Step 2: Use #5 Bicuspid Matrix to restore tooth 5

Step 3: Use #12 Bicuspid Matrix to restore tooth 12



Minimum Composite Usage

Tooth#	Capsules
--------	----------

5	1/4
---	-----

6	3/4
---	-----

7	1/2
---	-----

8	3/4
---	-----

9	3/4
---	-----

10	1/2
----	-----

11	-
----	---

12	1/2
----	-----

Total:	4
---------------	----------

