



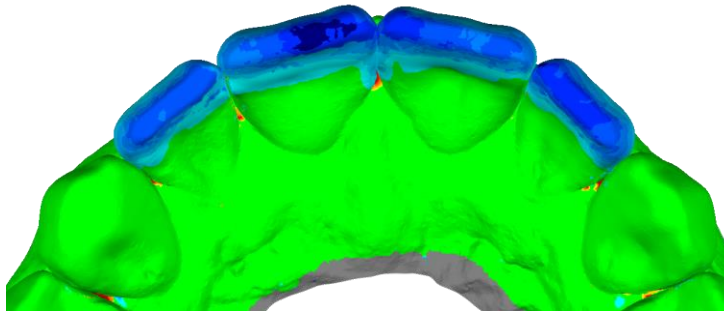
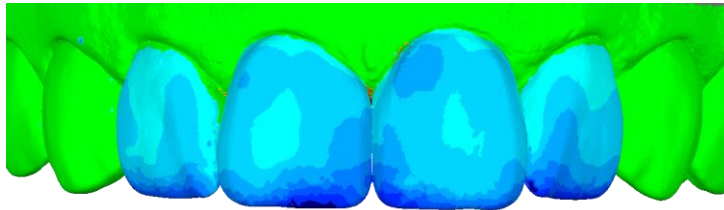
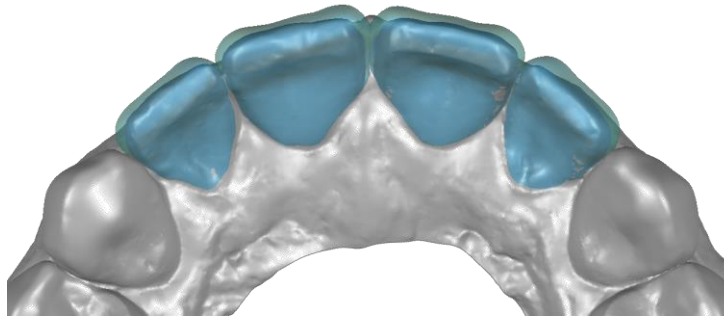
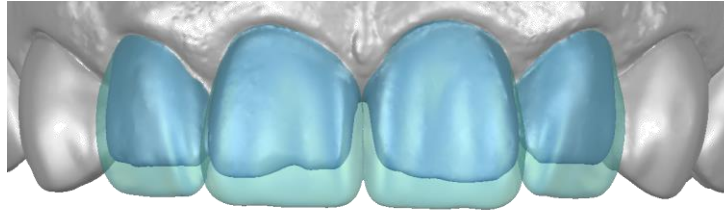
Filtek™
Matrix



Case 1: 4-Unit Veneer with Diastema

Instructions:

Step 1: Use Veneer Matrix for completing restorations #7-10



Minimum Composite Usage

Tooth#	Capsules
6	-
7	1/2
8	3/4
9	3/4
10	1/2
11	-
Total:	3

Tooth Removal

Unchanged

Composite Addition

0.5 mm

1.0 mm

1.5 mm

2.0+ mm