



# Prevena Restor™

Postoperative Recovery

## Management of Double Mastectomy with 3M™ Prevena Restor™ Bella•Form™ Incision Management System

Allen Gabriel, MD, FACS; Global Surgical Consulting; Camas, WA

### Patient

A 50-year-old female patient presented to the surgical clinic requiring bilateral mastectomy for breast cancer (Figure 1). She had no notable prior medical history.

### Procedure

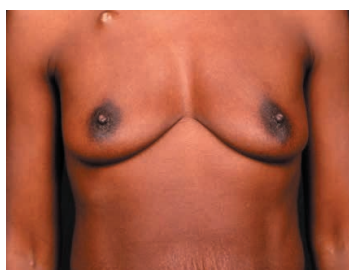
The patient underwent a bilateral mastectomy with immediate reconstruction, resulting in a 7-cm inframammary incision on each breast. The incisions were sutured closed over drains, and the patient was administered cephalexin for prophylactic antibiotic control.

### Application

Prevena Restor Therapy was initiated using Prevena Restor™ Bella•Form™ Dressing, which covered each inframammary incision and the entirety of each breast (Figure 2). Negative pressure was applied at -125 mmHg.

### Discharge and Follow-up

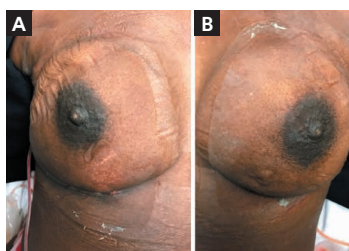
The patient was discharged home the day after surgery. After 6 days, Prevena Restor Therapy was discontinued, and the incision remained closed (Figure 3). When the patient returned for follow-up on postoperative day 9, there were no complications and the drain was removed (Figure 4). At 30 days post-surgery, the incision remained closed, and there was no incidence of surgical site infection, seroma, or any other complication.



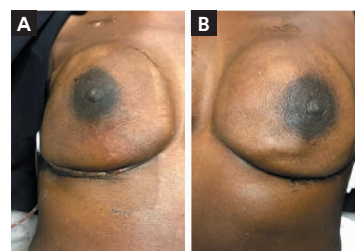
**Figure 1.** Breast appearance pre-mastectomy.



**Figure 2.** Application of 3M™ Prevena Restor™ Therapy with 3M™ Prevena Restor™ Bella•Form™ Dressing post mastectomy.



**Figure 3.** Appearance after 6 days of Prevena Restor Therapy with Prevena Restor™ Bella•Form™ Dressing. A) Right breast. B) Left breast.



**Figure 4.** Appearance on postoperative day 9. A) Right breast. B) Left breast.

The 3M™ Prevena Restor™ Bella•Form™ Incision Management System is suitable for a variety of anatomical locations.

Patient data and photos courtesy of Allen Gabriel, MD, FACS; Global Surgical Consulting; Camas, WA.

**Note:** As with any case study, the results and outcomes should not be interpreted as a guarantee or warranty of similar results. Individual results may vary, depending on the patient's circumstances and condition.

**Note:** Specific indications, contraindications, warnings, precautions and safety information exist for these products and therapies. Please consult a clinician and product instructions for use prior to application. This material is intended for healthcare professionals.

© 2022 3M. All rights reserved. 3M and the other marks shown are marks and/or registered marks. Unauthorised use prohibited.